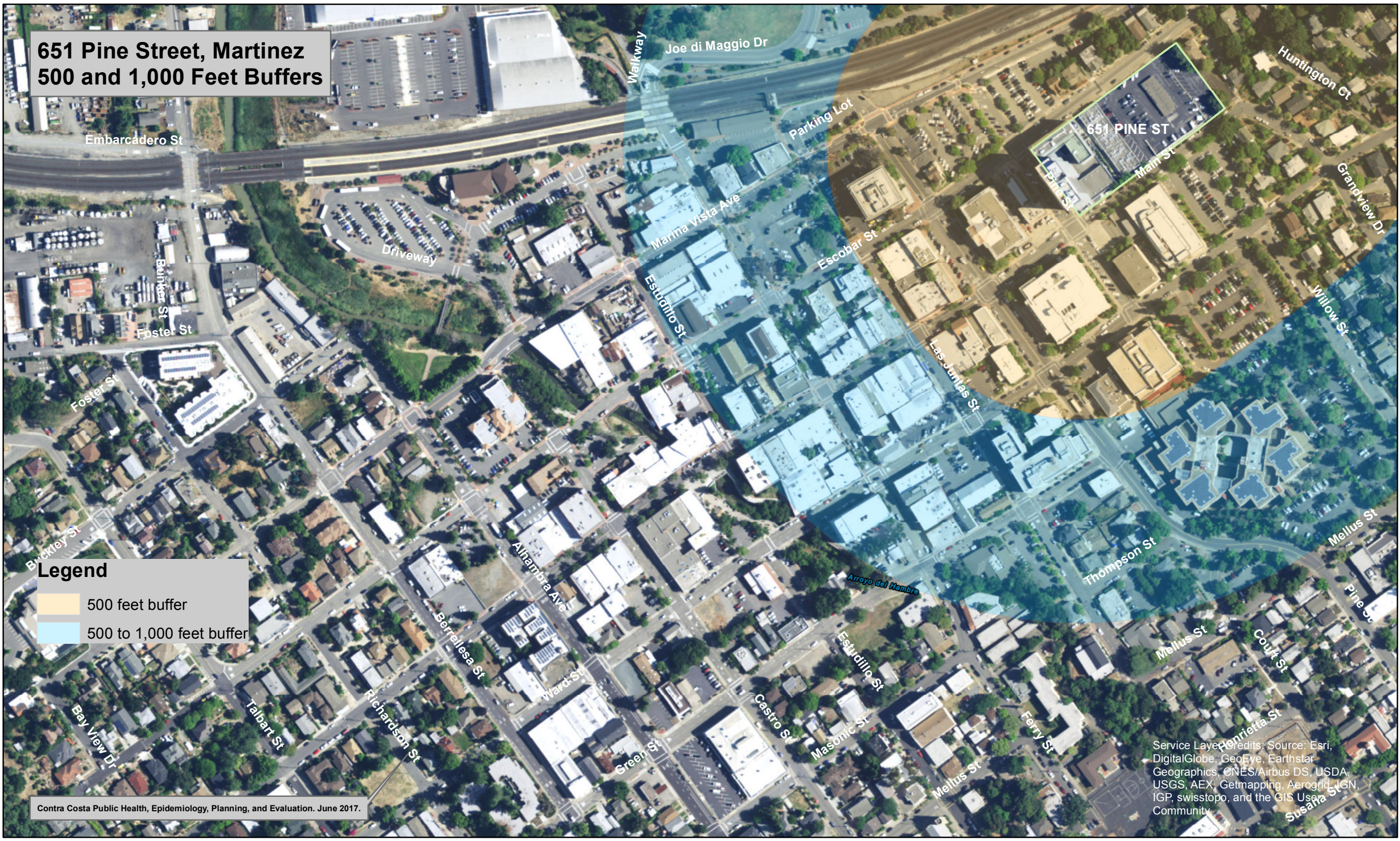


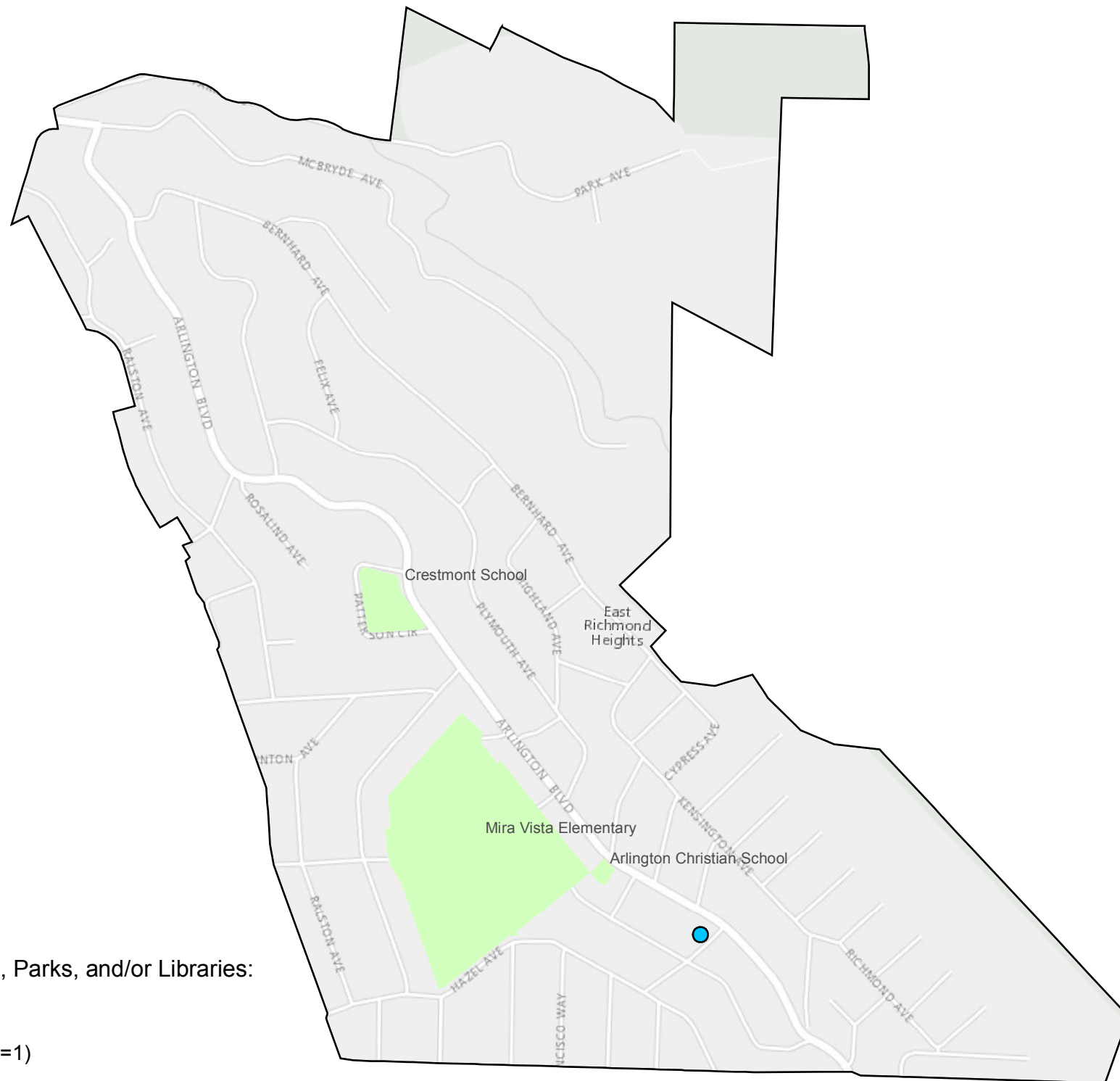
651 Pine Street, Martinez 500 and 1,000 Feet Buffers



Legend

- 500 feet buffer
- 500 to 1,000 feet buffer

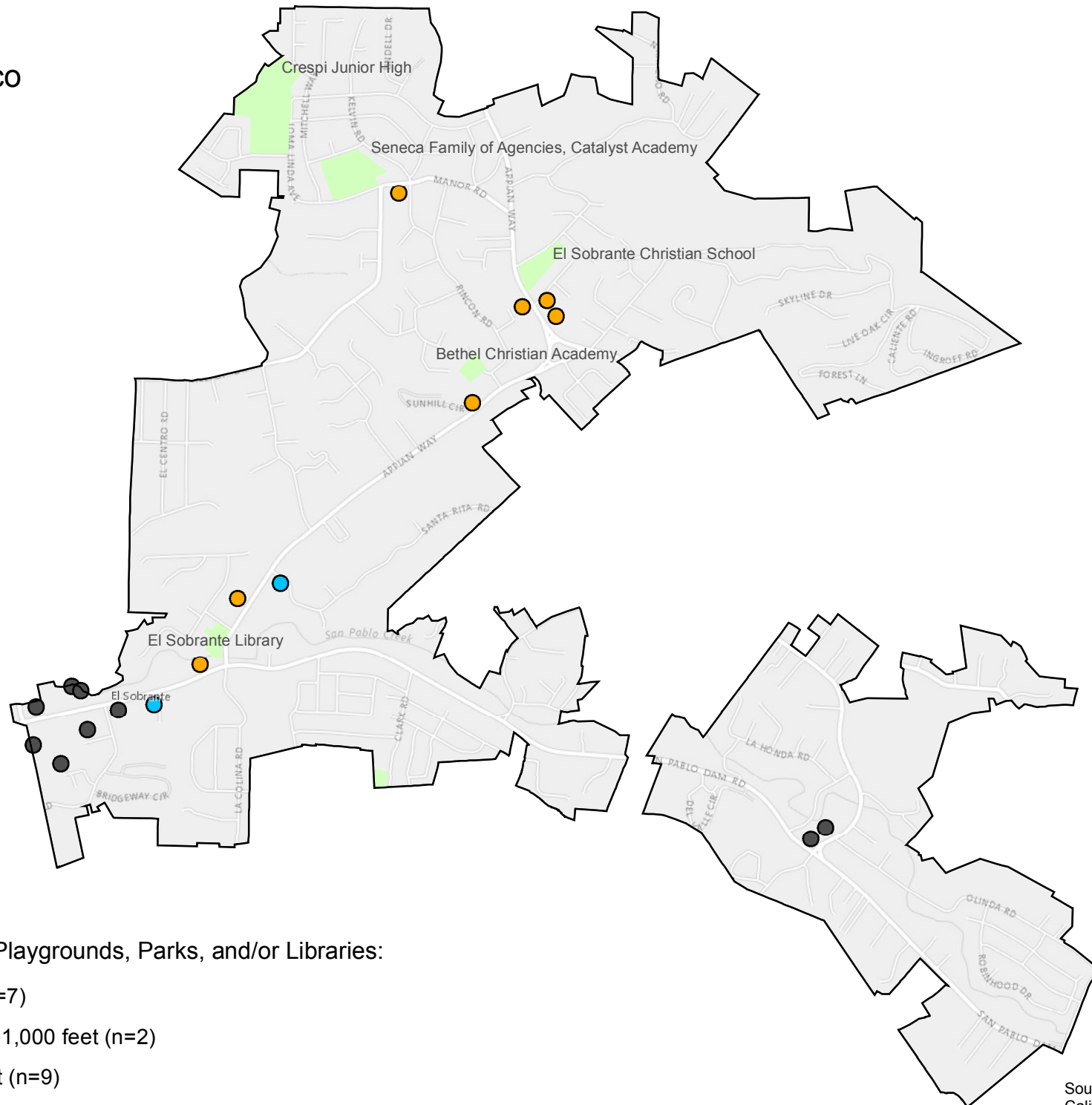
East Richmond Heights Stores Selling Tobacco



Store Proximity to Schools, Playgrounds, Parks, and/or Libraries:

- Store within 500 feet (n=0)
- Store between 500 and 1,000 feet (n=1)
- Store beyond 1,000 feet (n=0)

El Sobrante Stores Selling Tobacco



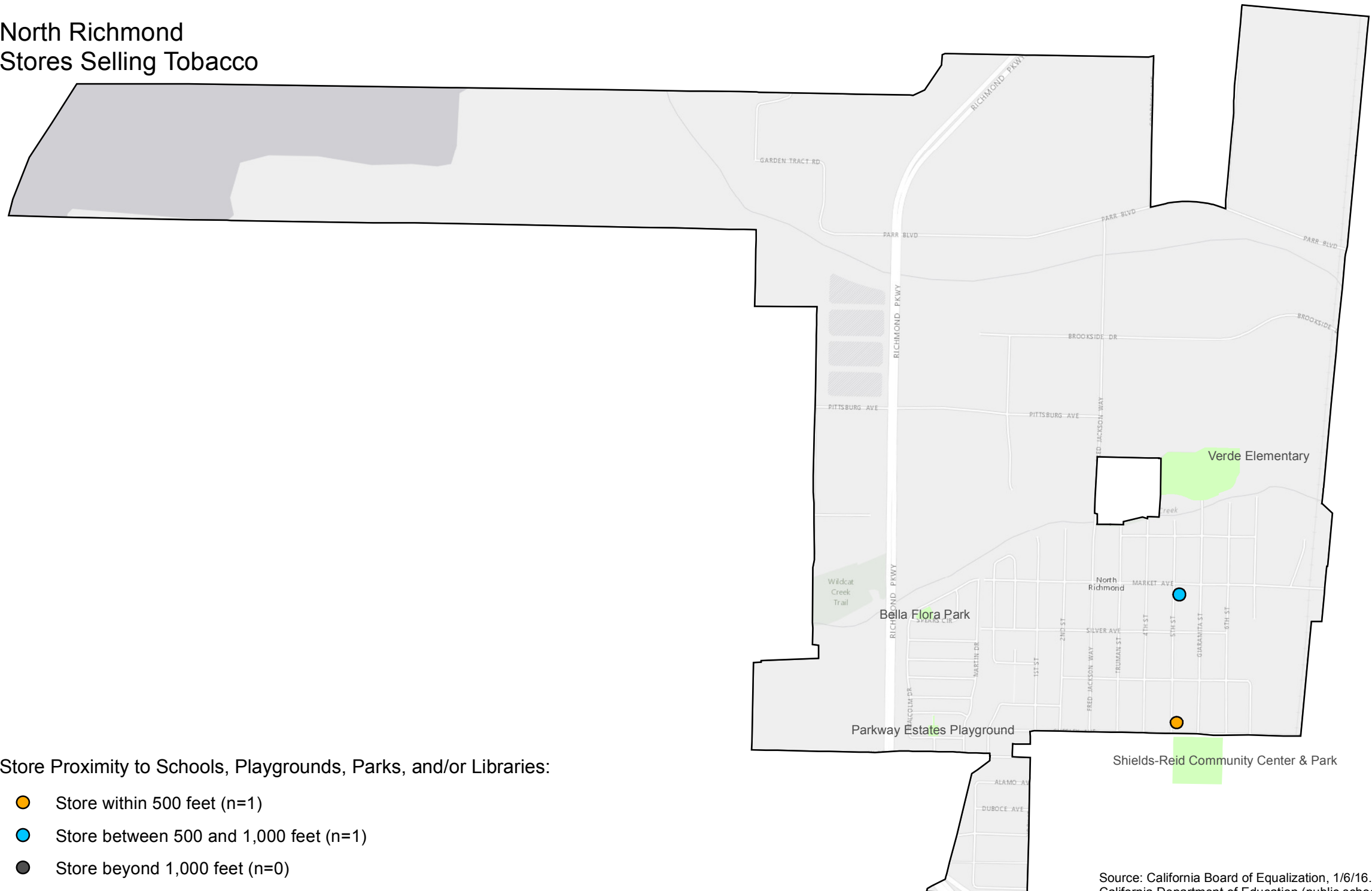
Montalvin Manor and Tara Hills Stores Selling Tobacco



Store Proximity to Schools, Playgrounds, Parks, and/or Libraries:

- Store within 500 feet (n=2)
- Store between 500 and 1,000 feet (n=0)
- Store beyond 1,000 feet (n=0)

North Richmond Stores Selling Tobacco



Store Proximity to Schools, Playgrounds, Parks, and/or Libraries:

- Store within 500 feet (n=1)
- Store between 500 and 1,000 feet (n=1)
- Store beyond 1,000 feet (n=0)

Source: California Board of Equalization, 1/6/16.
California Department of Education (public schools 2/23/16;
private schools 8/12/15).