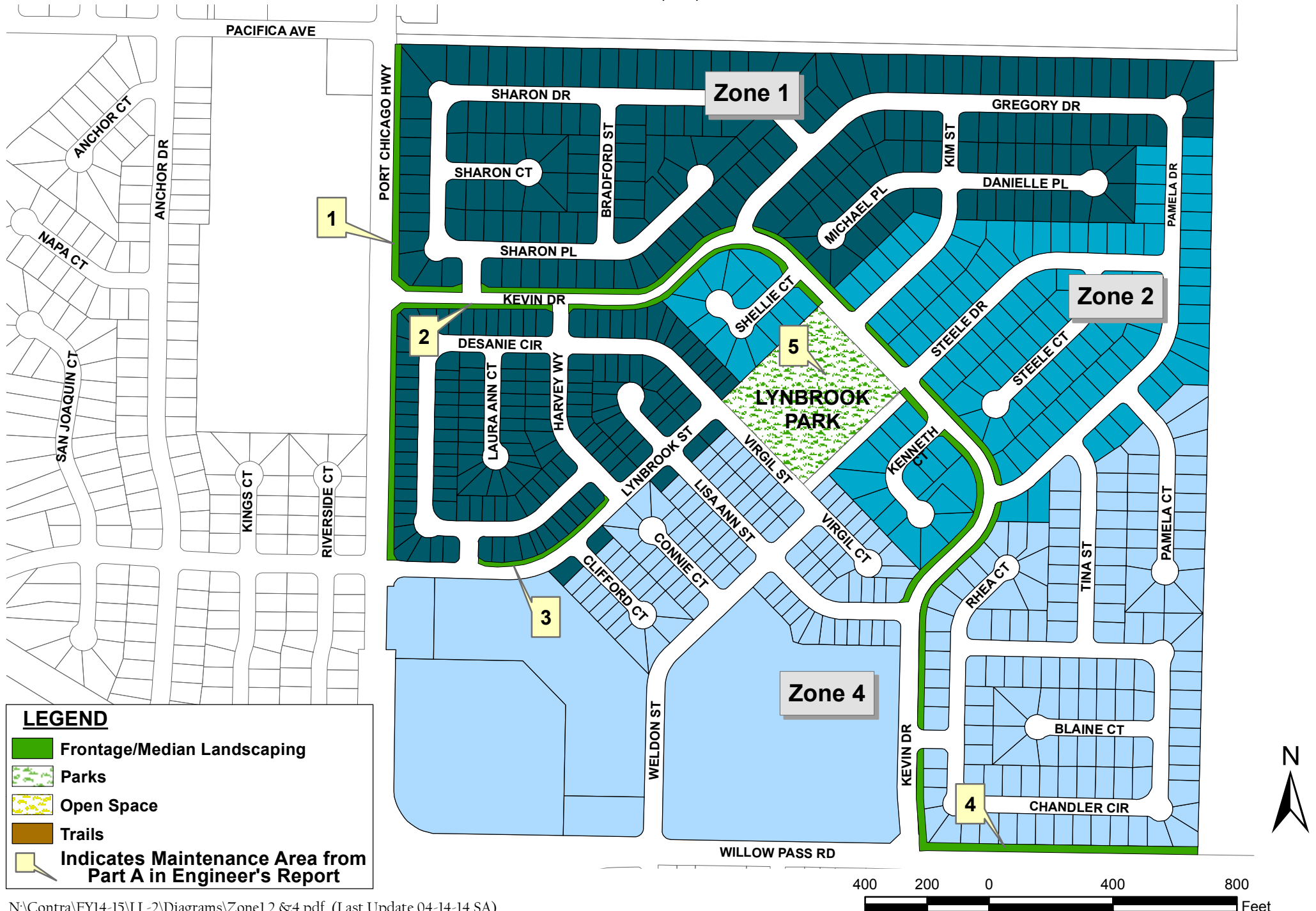
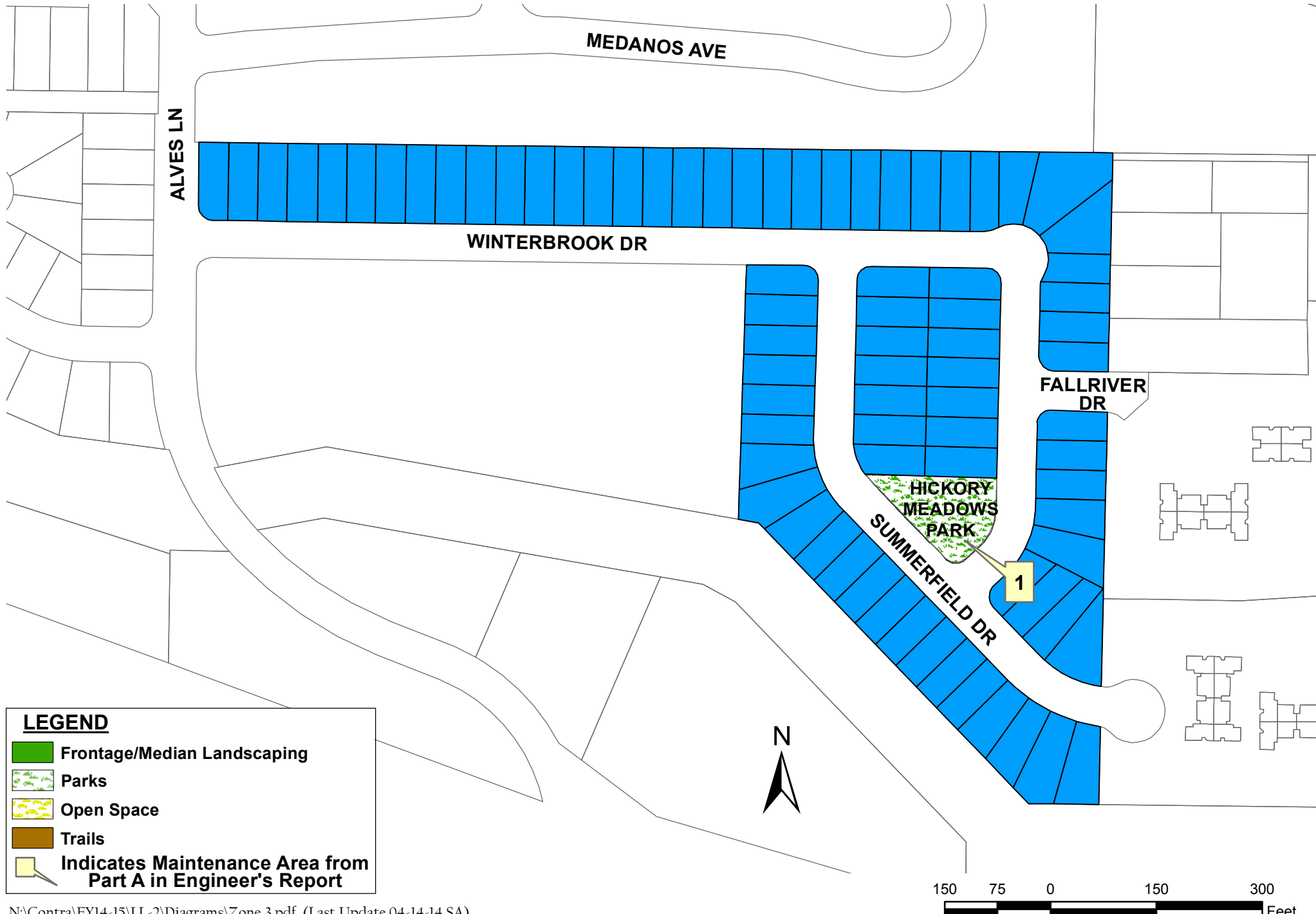


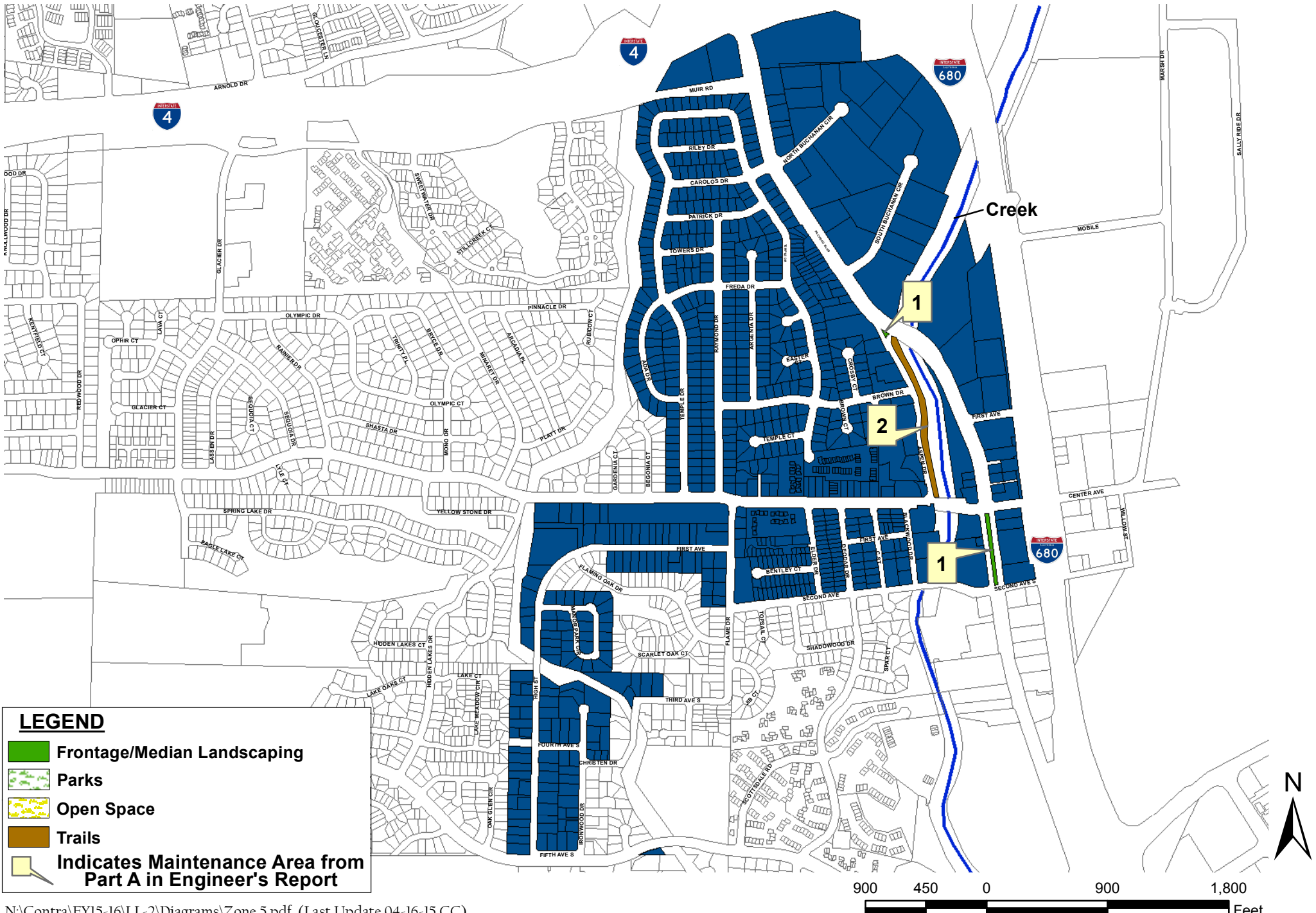
Assessment Diagram Contra Costa County LL-2 Zones 1, 2, & 4



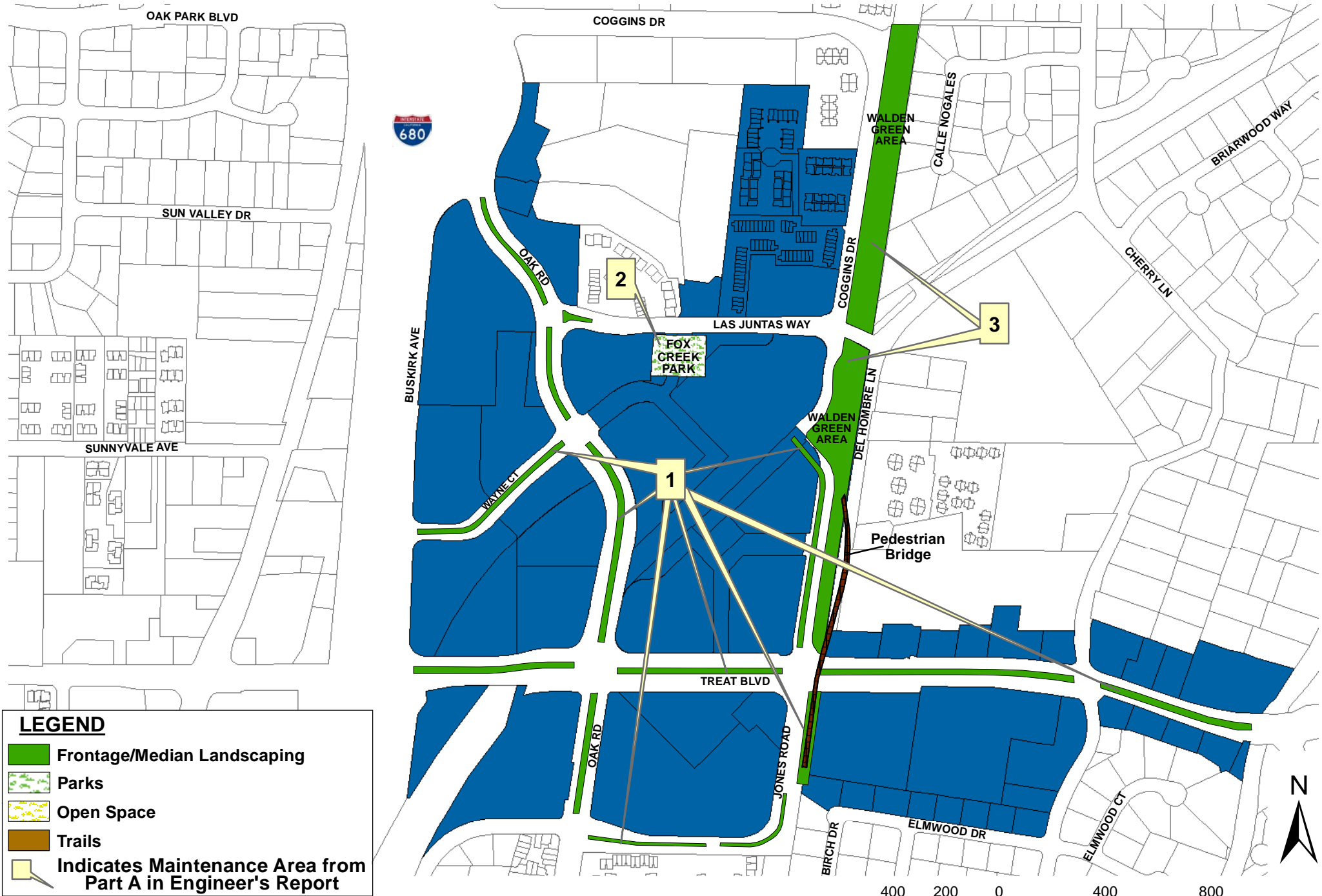
Assessment Diagram Contra Costa County LL-2 Zone 3



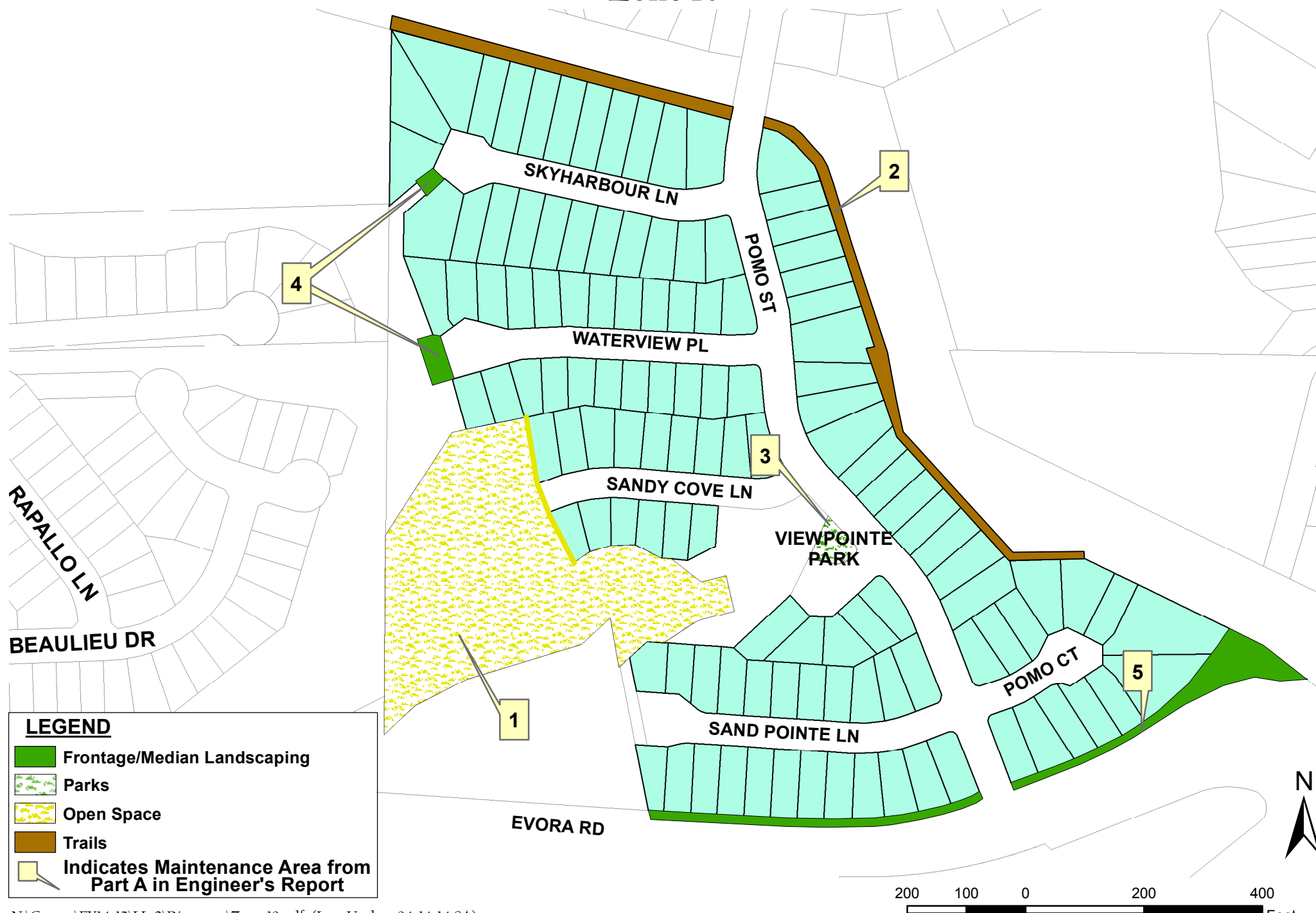
Assessment Diagram Contra Costa County LL-2 Zone 5



Assessment Diagram Contra Costa County LL-2 Zone 7



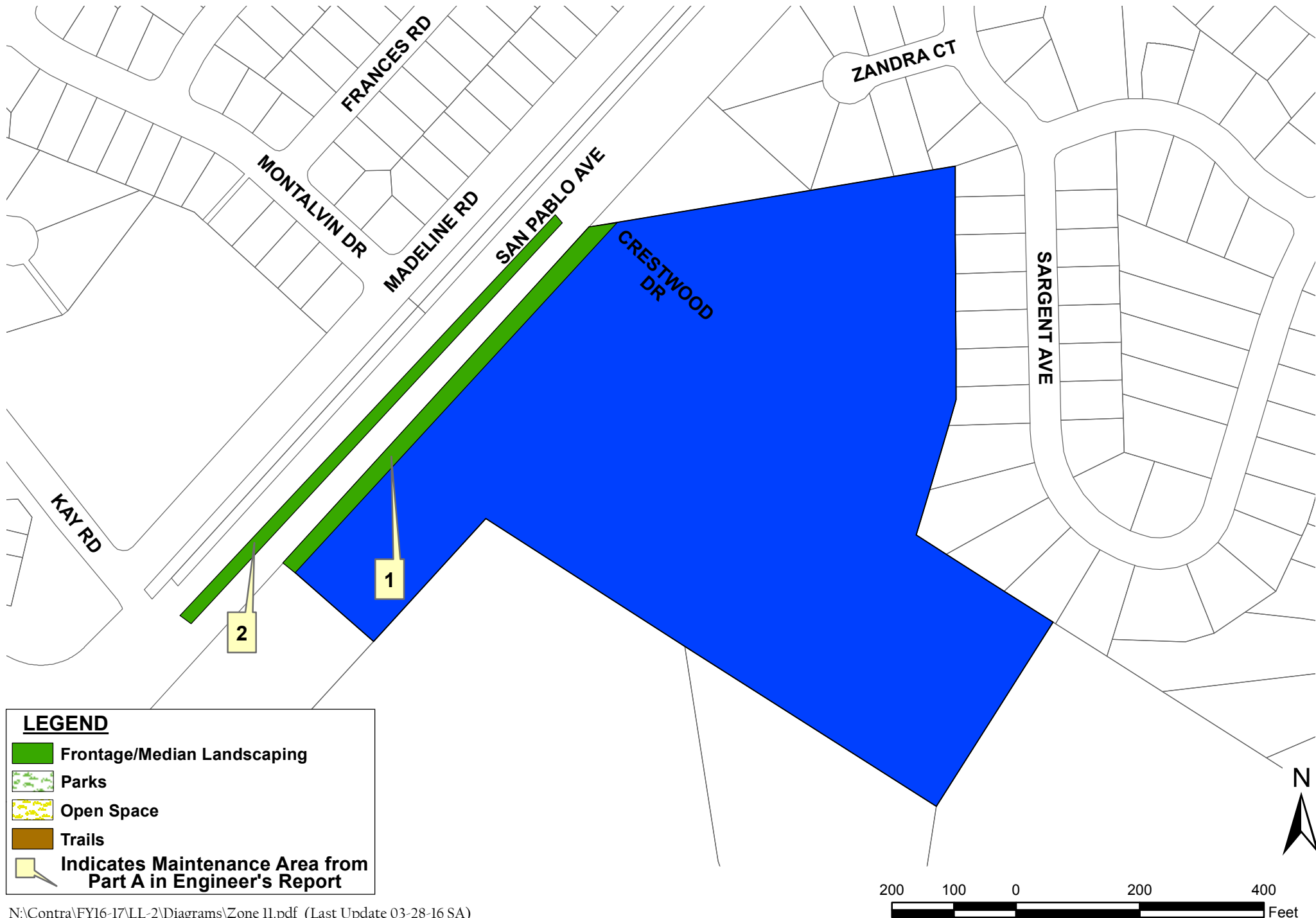
Assessment Diagram Contra Costa County LL-2 Zone 10



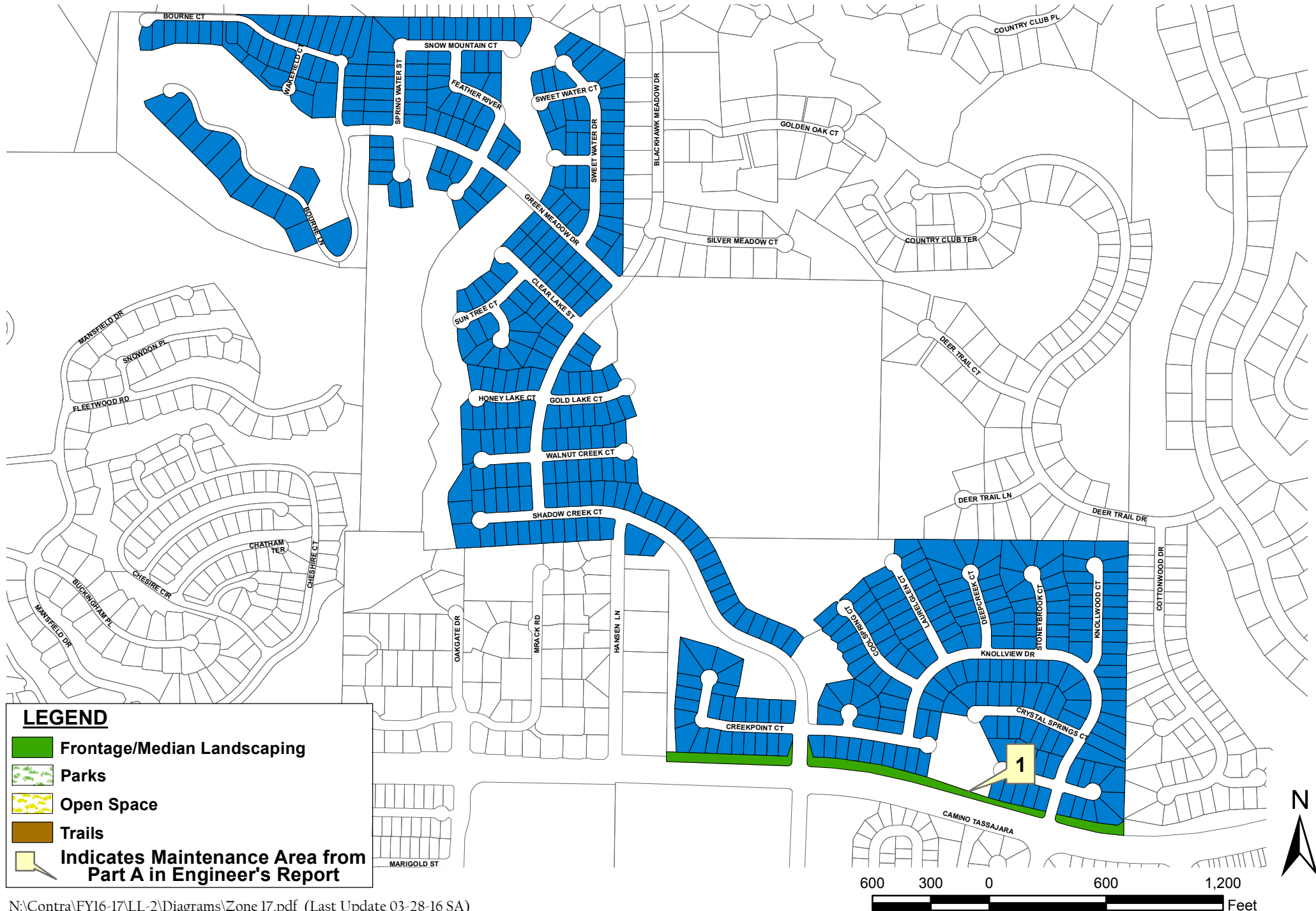
LEGEND

- Frontage/Median Landscaping
- Parks
- Open Space
- Trails
- Indicates Maintenance Area from Part A in Engineer's Report

Assessment Diagram Contra Costa County LL-2 Zone II



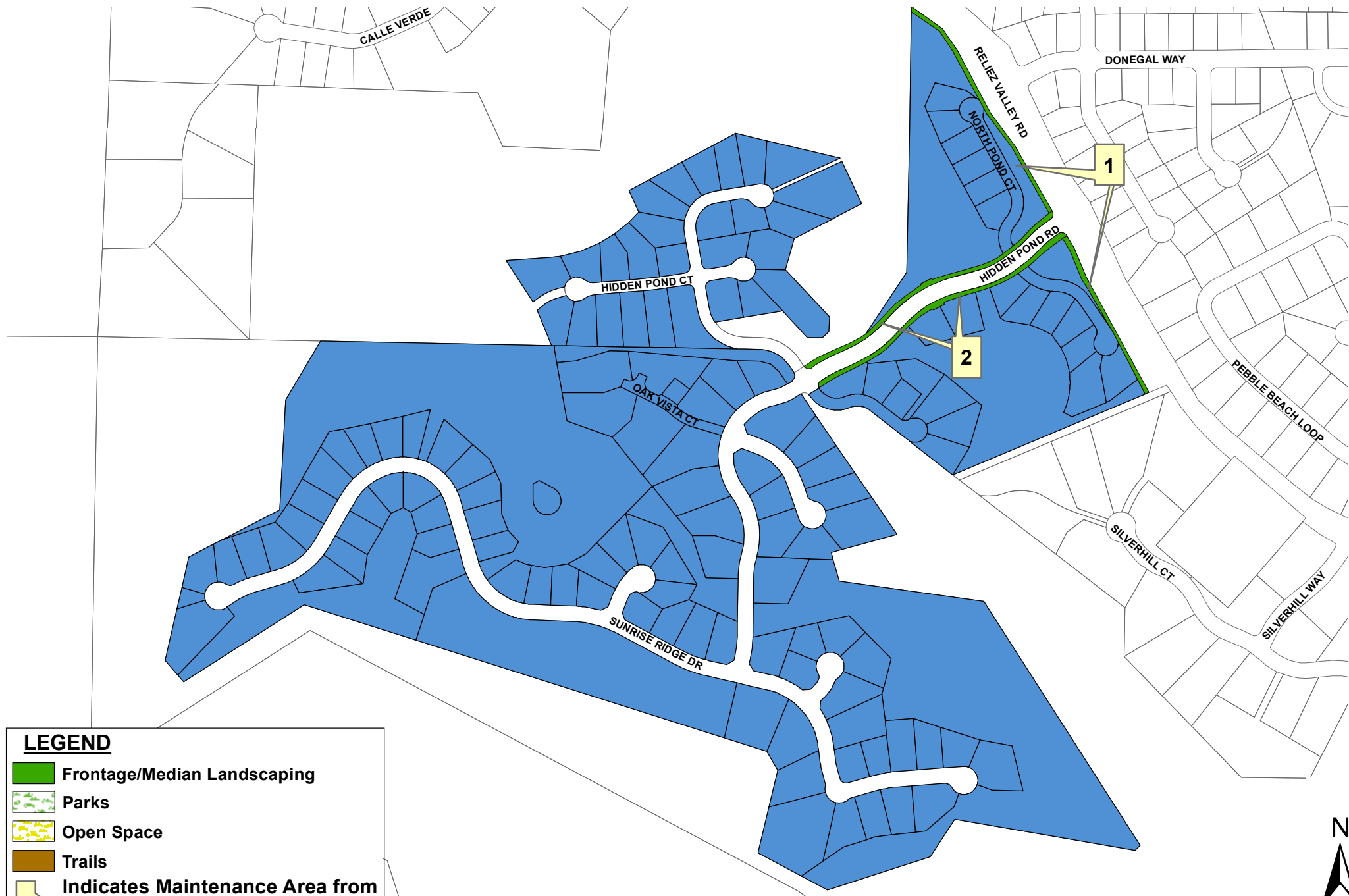
Assessment Diagram Contra Costa County LL-2 Zone 17



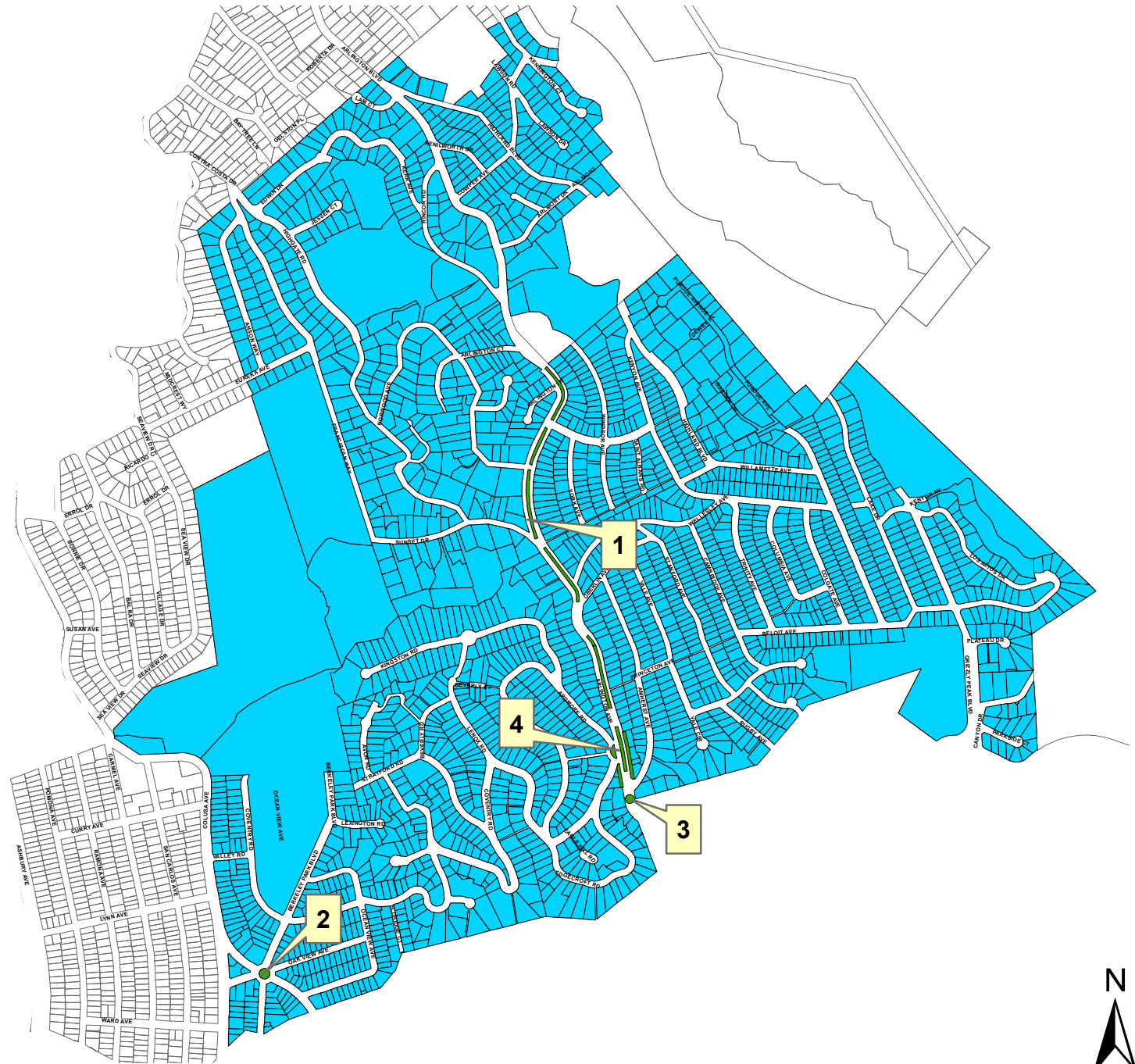
Assessment Diagram Contra Costa County LL-2 Zone 18



Assessment Diagram Contra Costa County LL-2 Zone 19



Assessment Diagram Contra Costa County LL-2 Zone 21



LEGEND

- Frontage/Median Landscaping
- Parks
- Open Space
- Trails
- Indicates Maintenance Area from Part A in Engineer's Report



Assessment Diagram Contra Costa County LL-2 Zone 22

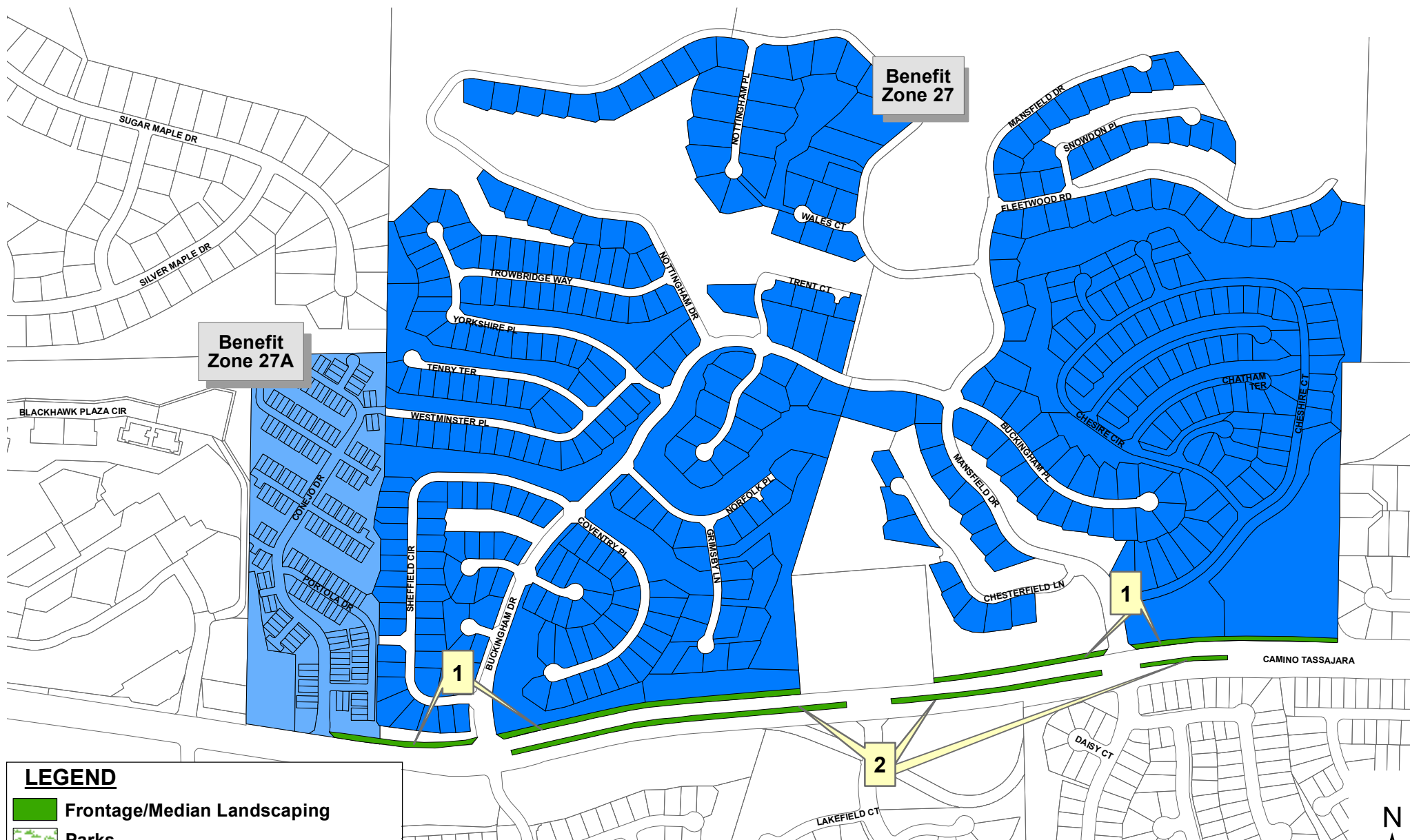


LEGEND

- Frontage/Median Landscaping
- Parks
- Open Space
- Trails
- Indicates Maintenance Area from Part A in Engineer's Report



Assessment Diagram Contra Costa County LL-2 Zone 27



**Benefit
Zone 27A**

**Benefit
Zone 27**

LEGEND

- Frontage/Median Landscaping
- Parks
- Open Space
- Trails
- Indicates Maintenance Area from Part A in Engineer's Report

* Improvements include landscape between the sidewalk and the curb on Camino Tassajara & medians - slopes are HOA maintained



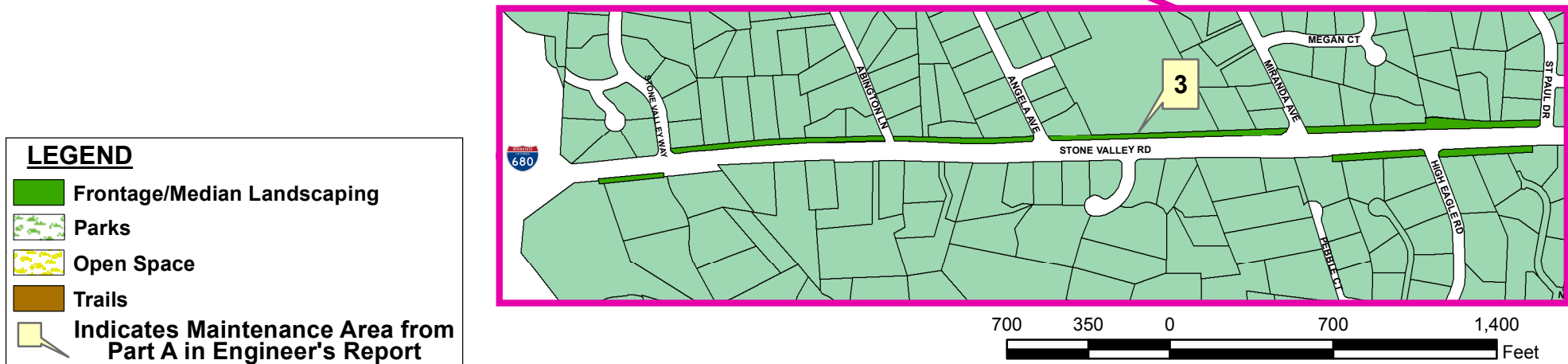
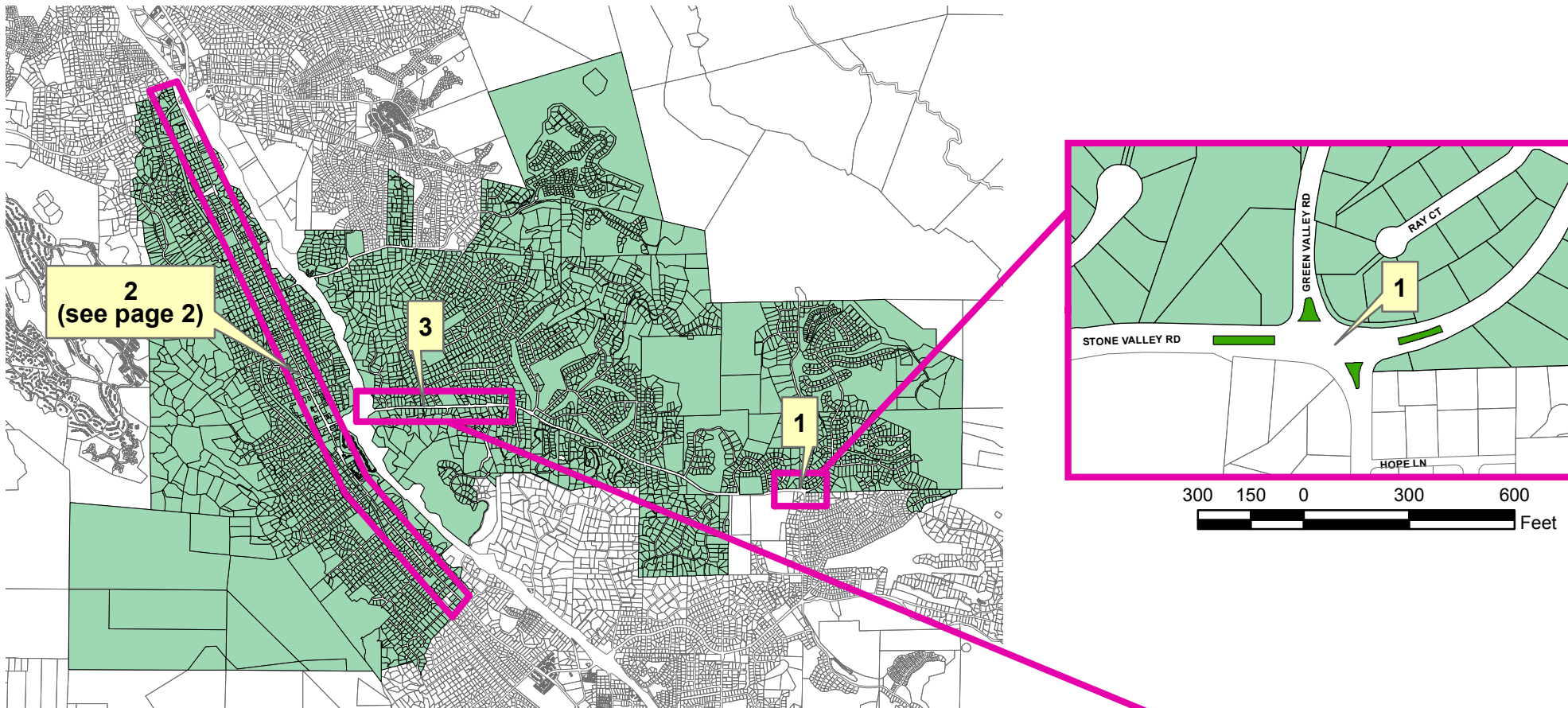
Assessment Diagram Contra Costa County LL-2 Zone 35



LEGEND

- Frontage/Median Landscaping
- Parks
- Open Space
- Trails
- Indicates Maintenance Area from Part A in Engineer's Report

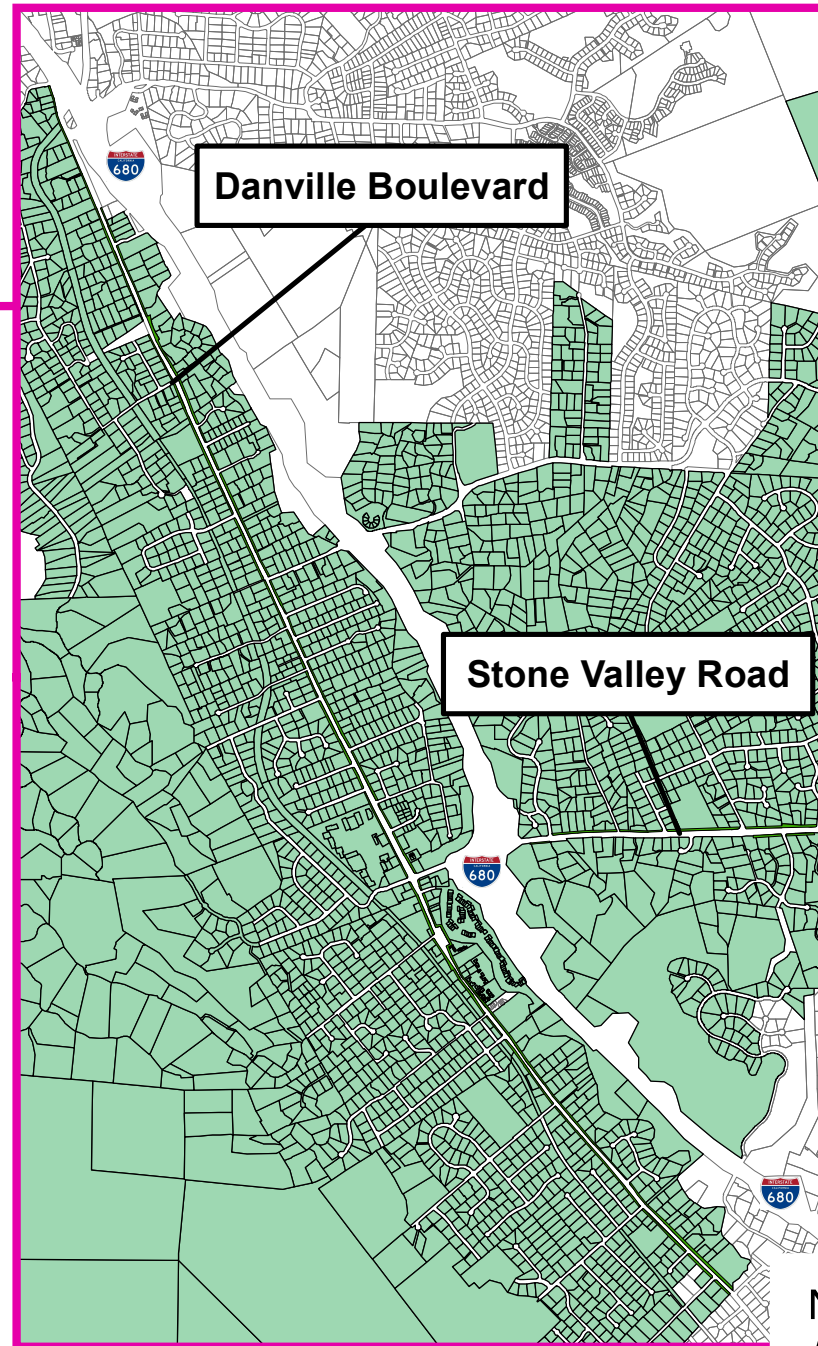
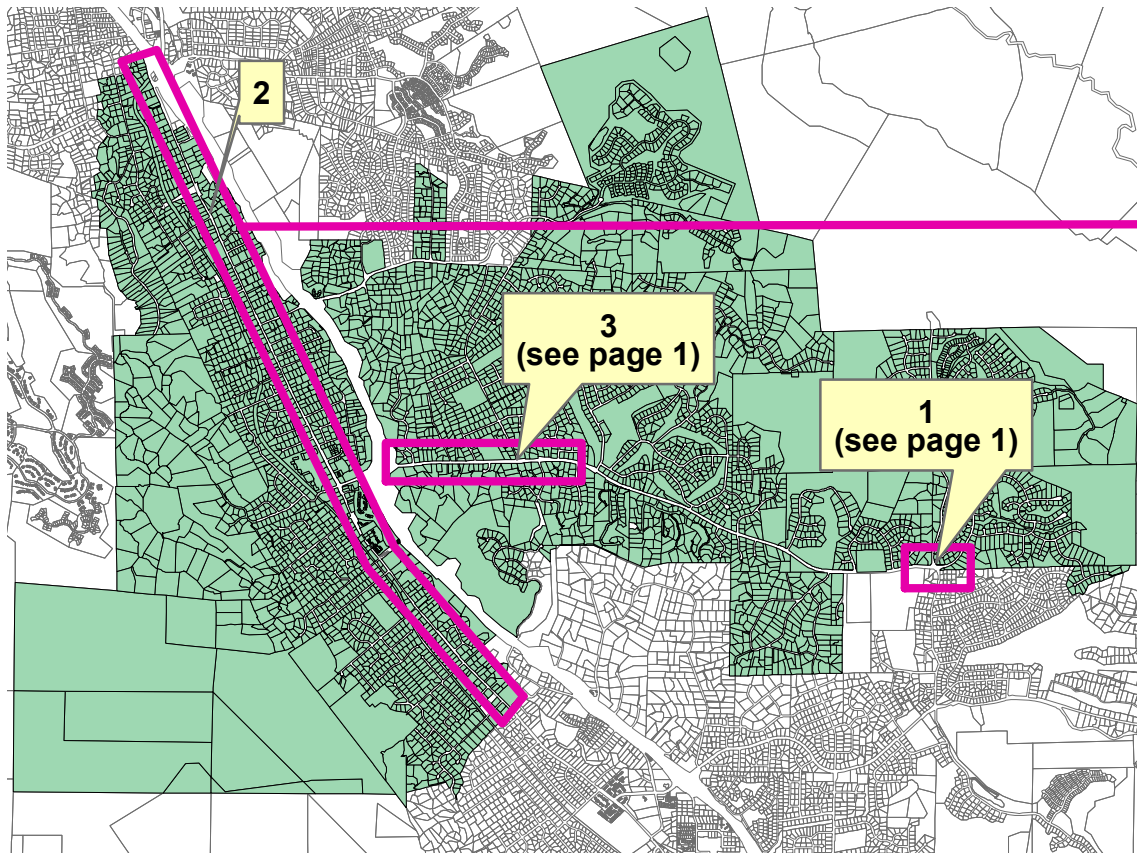
Assessment Diagram Contra Costa County LL-2 Zone 36



LEGEND

- Frontage/Median Landscaping
- Parks
- Open Space
- Trails
- Indicates Maintenance Area from Part A in Engineer's Report

Assessment Diagram Contra Costa County LL-2 Zone 36

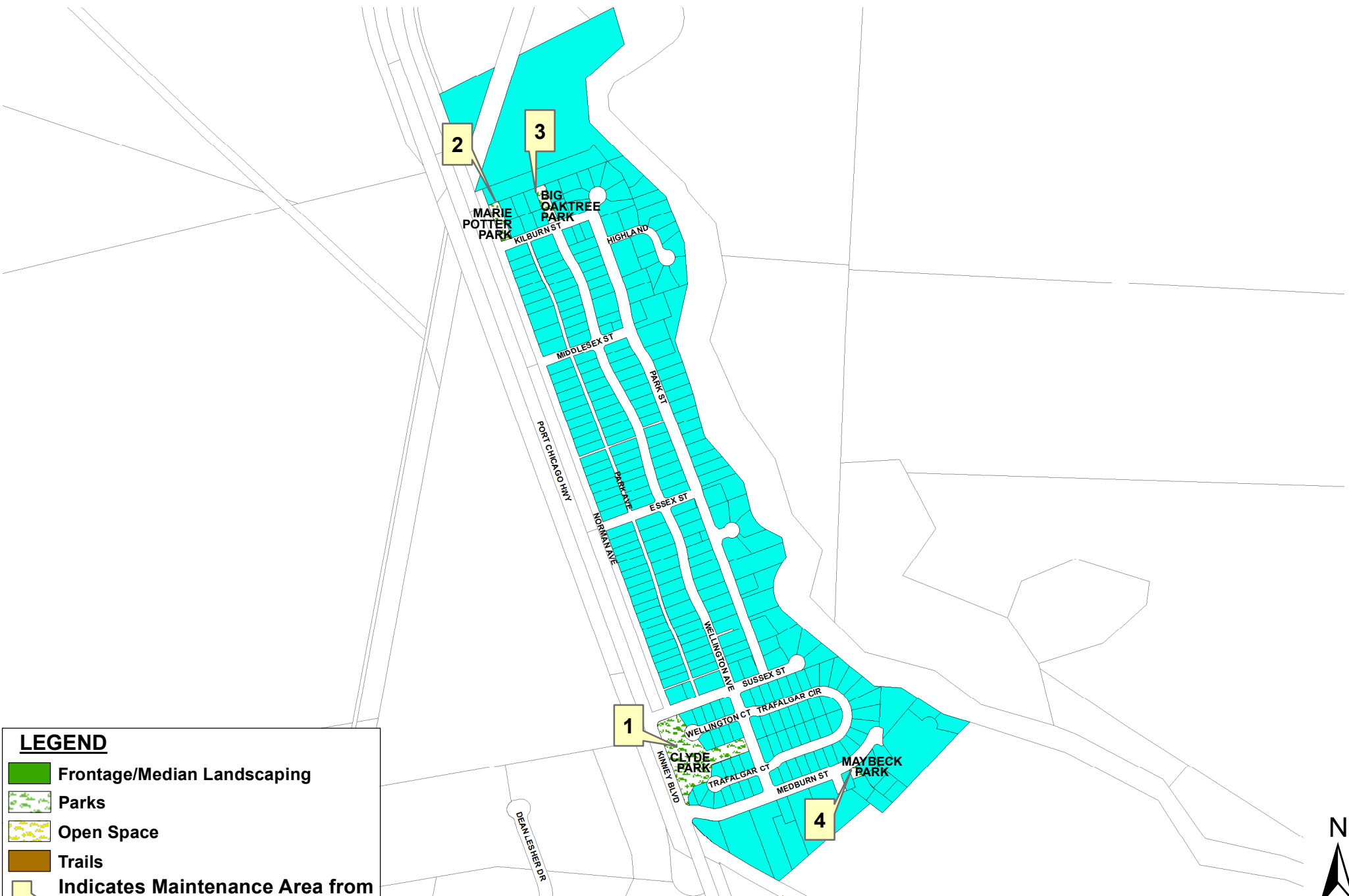


LEGEND

- Frontage/Median Landscaping
- Parks
- Open Space
- Trails
- Indicates Maintenance Area from Part A in Engineer's Report



Assessment Diagram Contra Costa County LL-2 Zone 37



LEGEND

- Frontage/Median Landscaping
- Parks
- Open Space
- Trails
- Indicates Maintenance Area from Part A in Engineer's Report



Assessment Diagram Contra Costa County LL-2 Zone 38



Assessment Diagram Contra Costa County LL-2 Zone 38

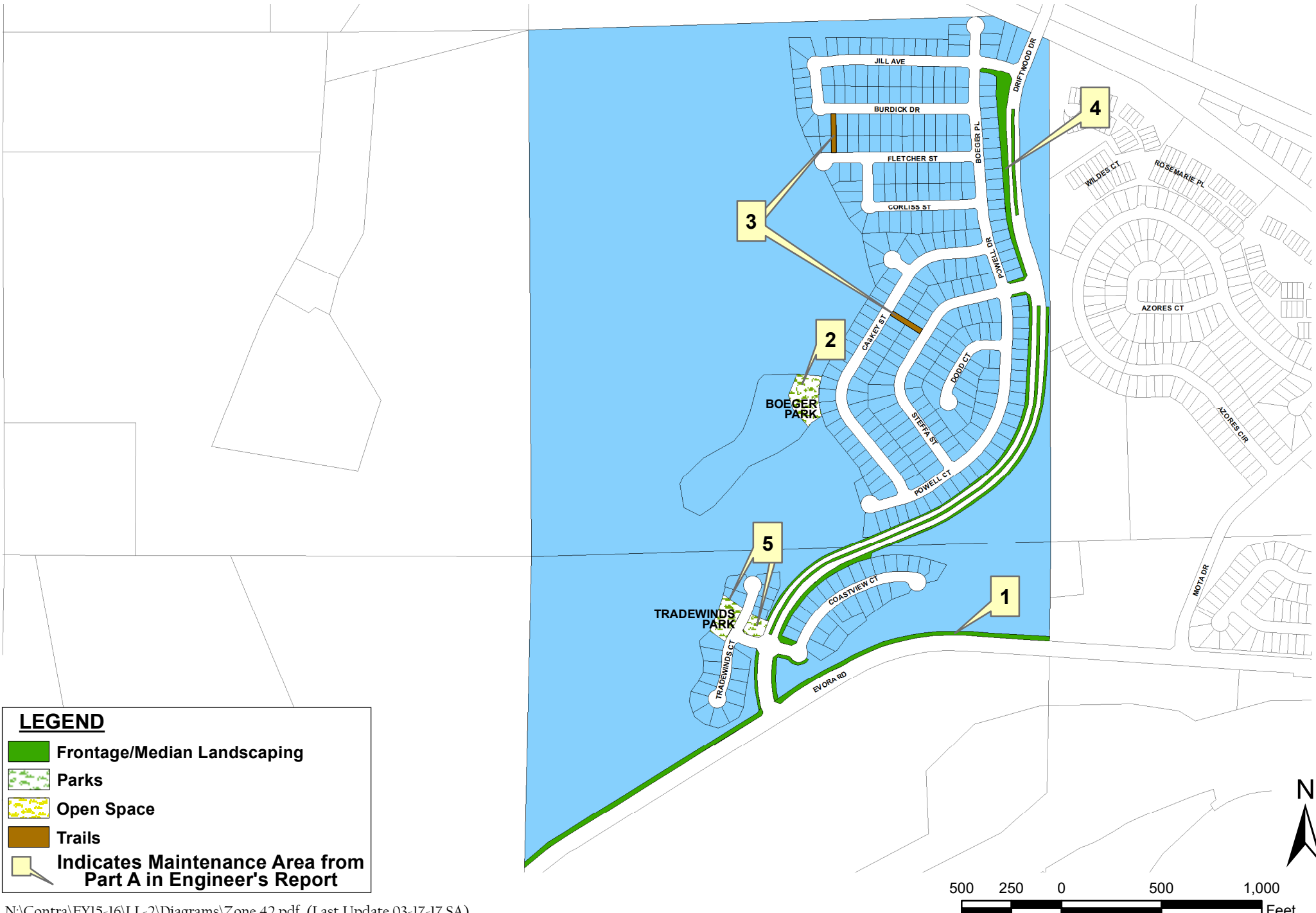


LEGEND

- Frontage/Median Landscaping
- Parks
- Open Space
- Trails
- Indicates Maintenance Area from Part A in Engineer's Report



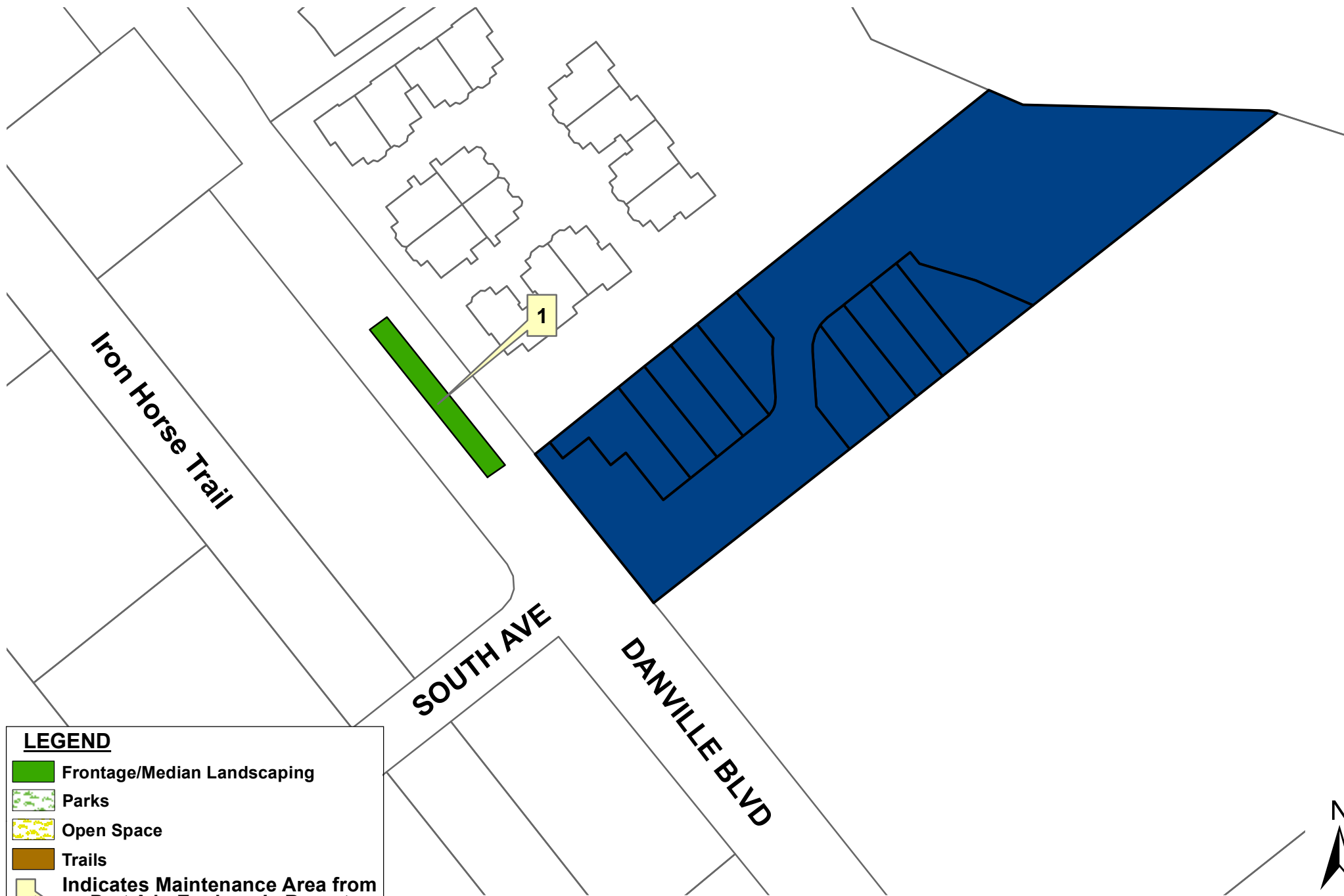
Assessment Diagram Contra Costa County LL-2 Zone 42



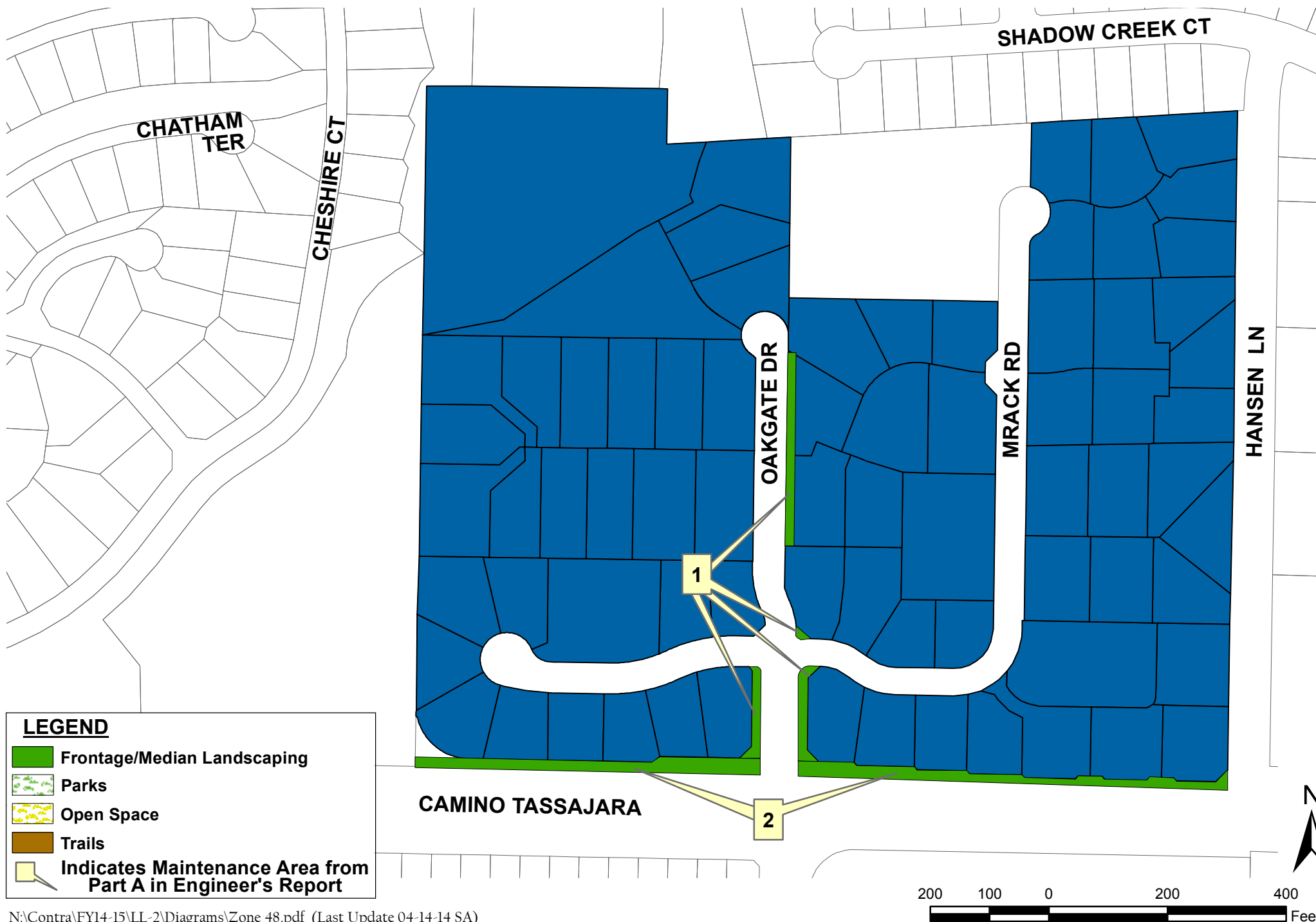
LEGEND

- Frontage/Median Landscaping
- Parks
- Open Space
- Trails
- Indicates Maintenance Area from Part A in Engineer's Report

Assessment Diagram Contra Costa County LL-2 Zone 45



Assessment Diagram Contra Costa County LL-2 Zone 48



Assessment Diagram Contra Costa County LL-2 Zone 54



Assessment Diagram Contra Costa County LL-2 Zone 57

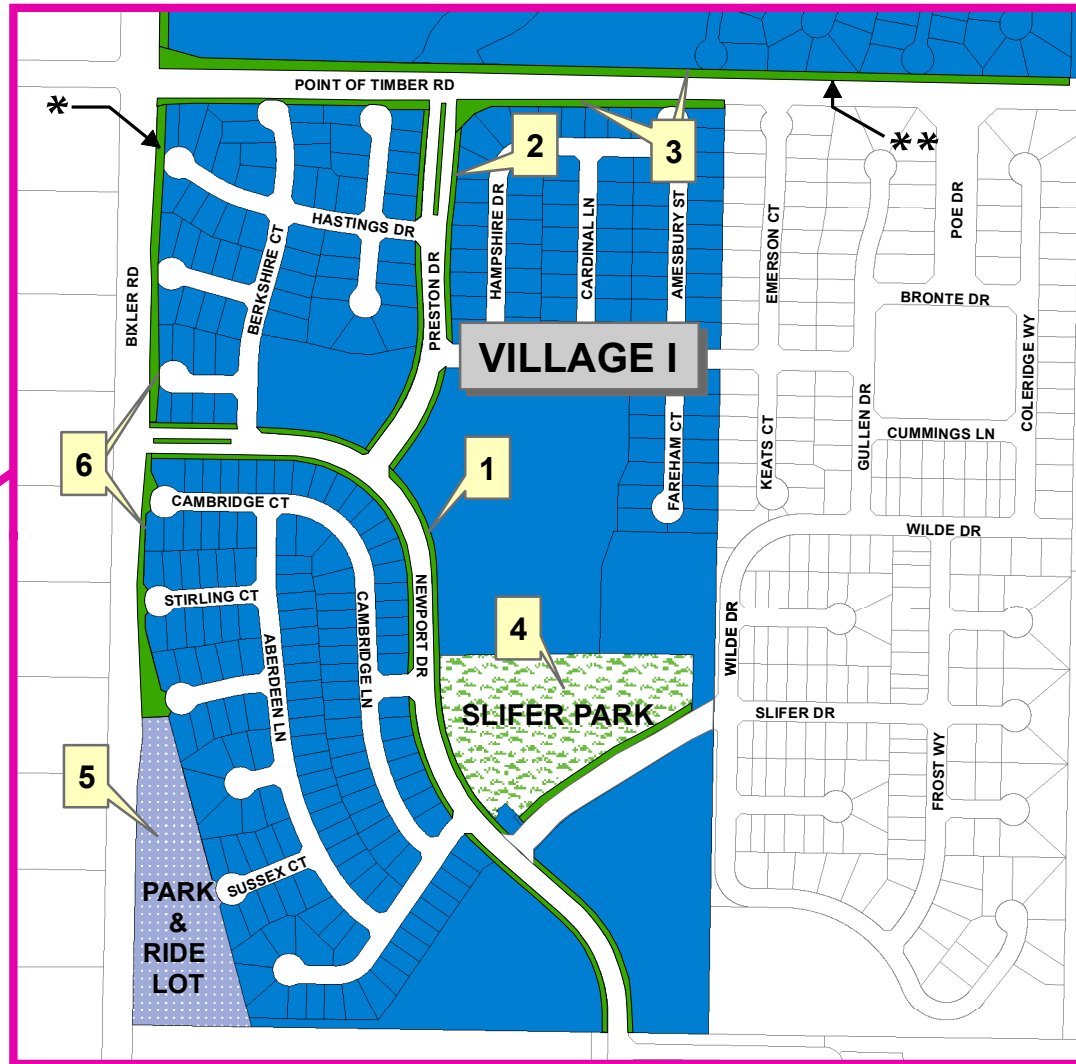
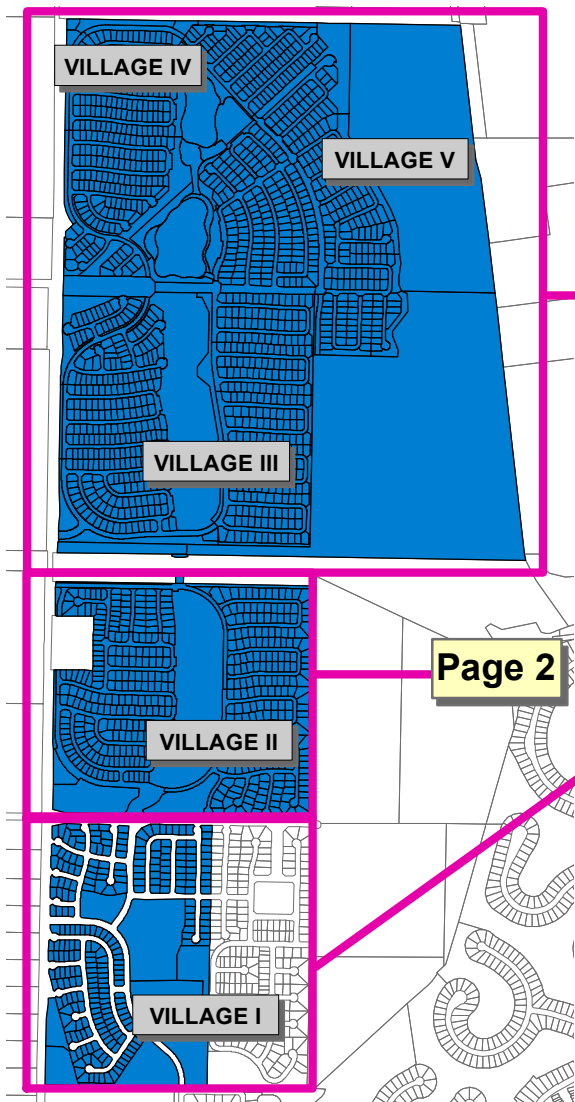


LEGEND

- Frontage/Median Landscaping
- Parks
- Open Space
- Trails
- Indicates Maintenance Area from Part A in Engineer's Report



Assessment Diagram Contra Costa County LL-2 Zone 61



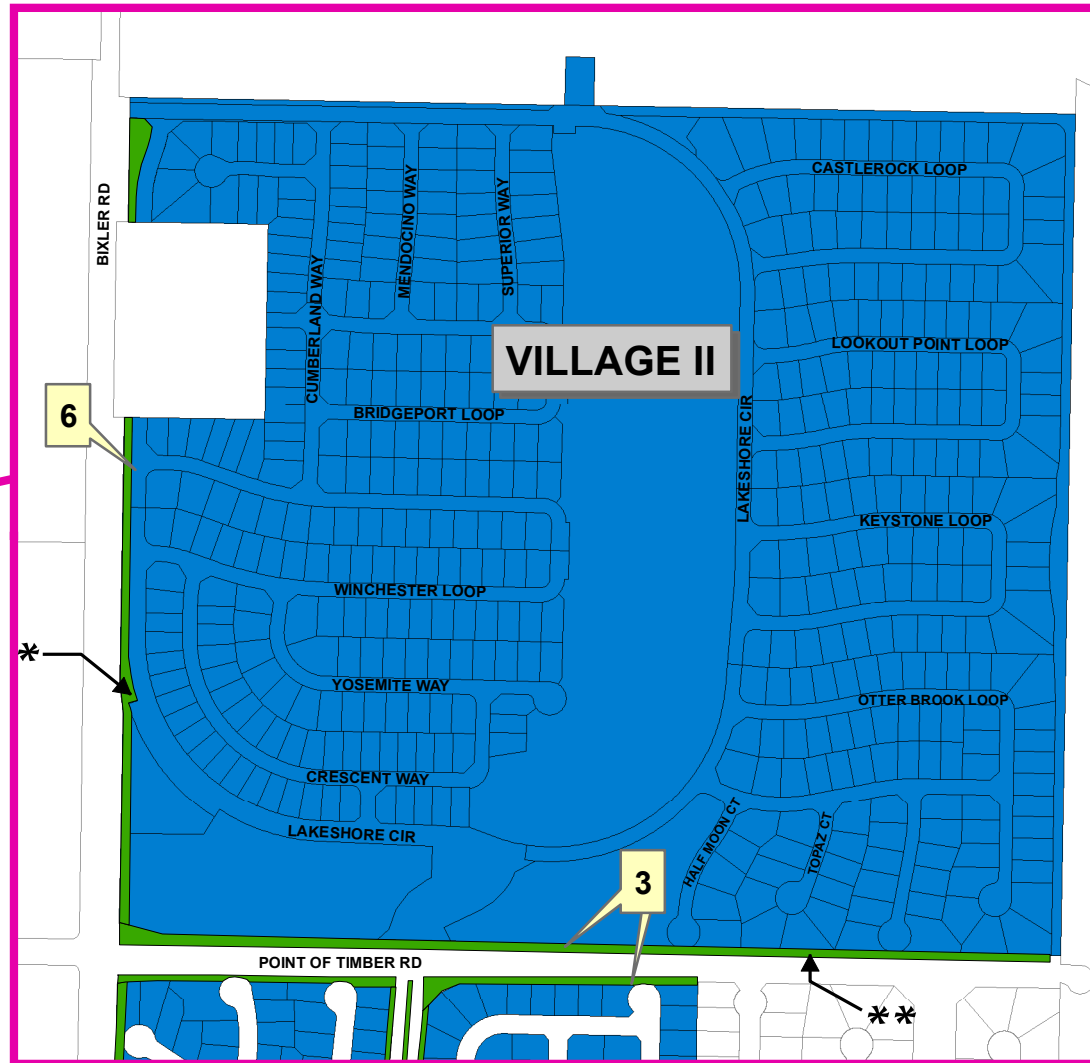
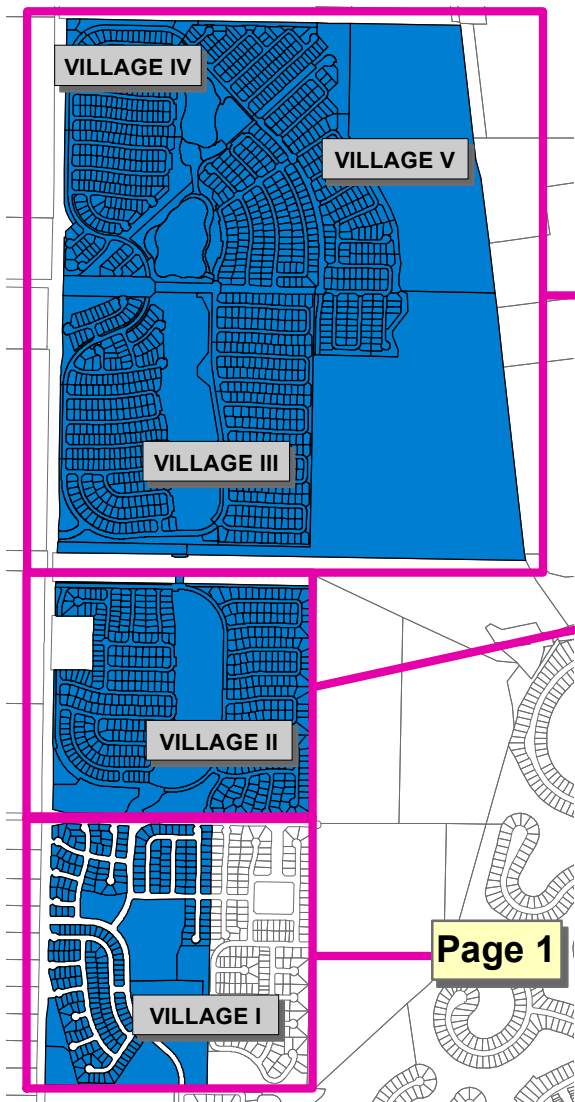
LEGEND

- Frontage/Median Landscaping
- Parks
- Open Space
- Trails
- Park & Ride Lots
- Indicates Maintenance Area from Part A in Engineer's Report

* County maintained landscape areas are all on the east side of Bixler Road. There are intermittent pockets at entryways which are maintained by other services (HOAs).

** Point of Timber Road is between Villages I and II (north frontage Village I and south frontage Village II). The entryway to The Lakes development is maintained by other services (HOAs).

Assessment Diagram Contra Costa County LL-2 Zone 61



LEGEND

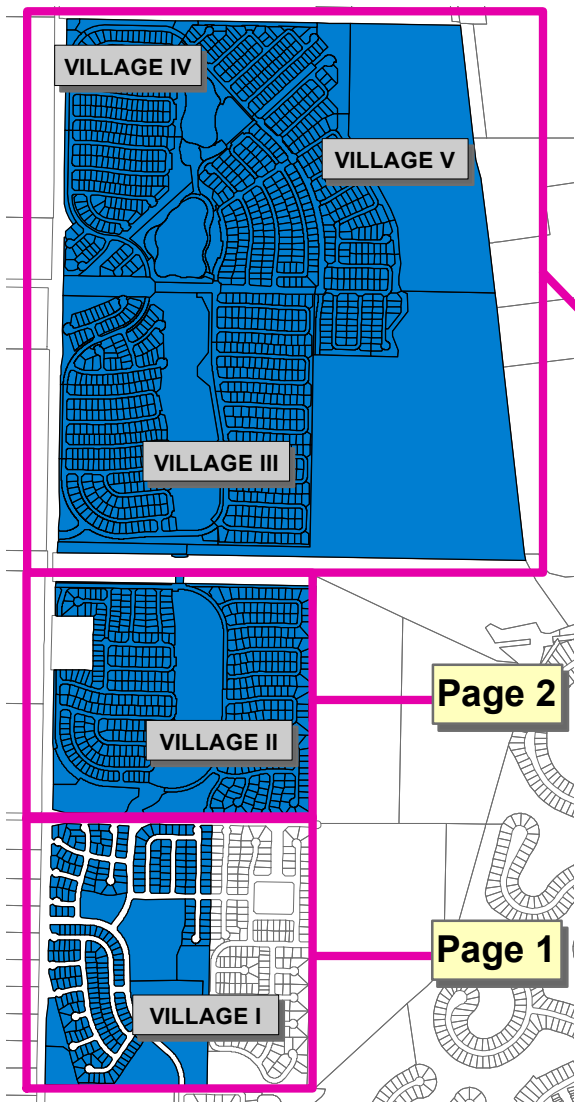
- Frontage/Median Landscaping
- Parks
- Open Space
- Trails
- Park & Ride Lots
- Indicates Maintenance Area from Part A in Engineer's Report

* County maintained landscape areas are all on the east side of Bixler Road. There are intermittent pockets at entryways which are maintained by other services (HOAs).

** Point of Timber Road is between Villages I and II (north frontage Village I and south frontage Village II). The entryway to The Lakes development is maintained by other services (HOAs).

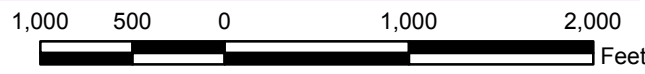
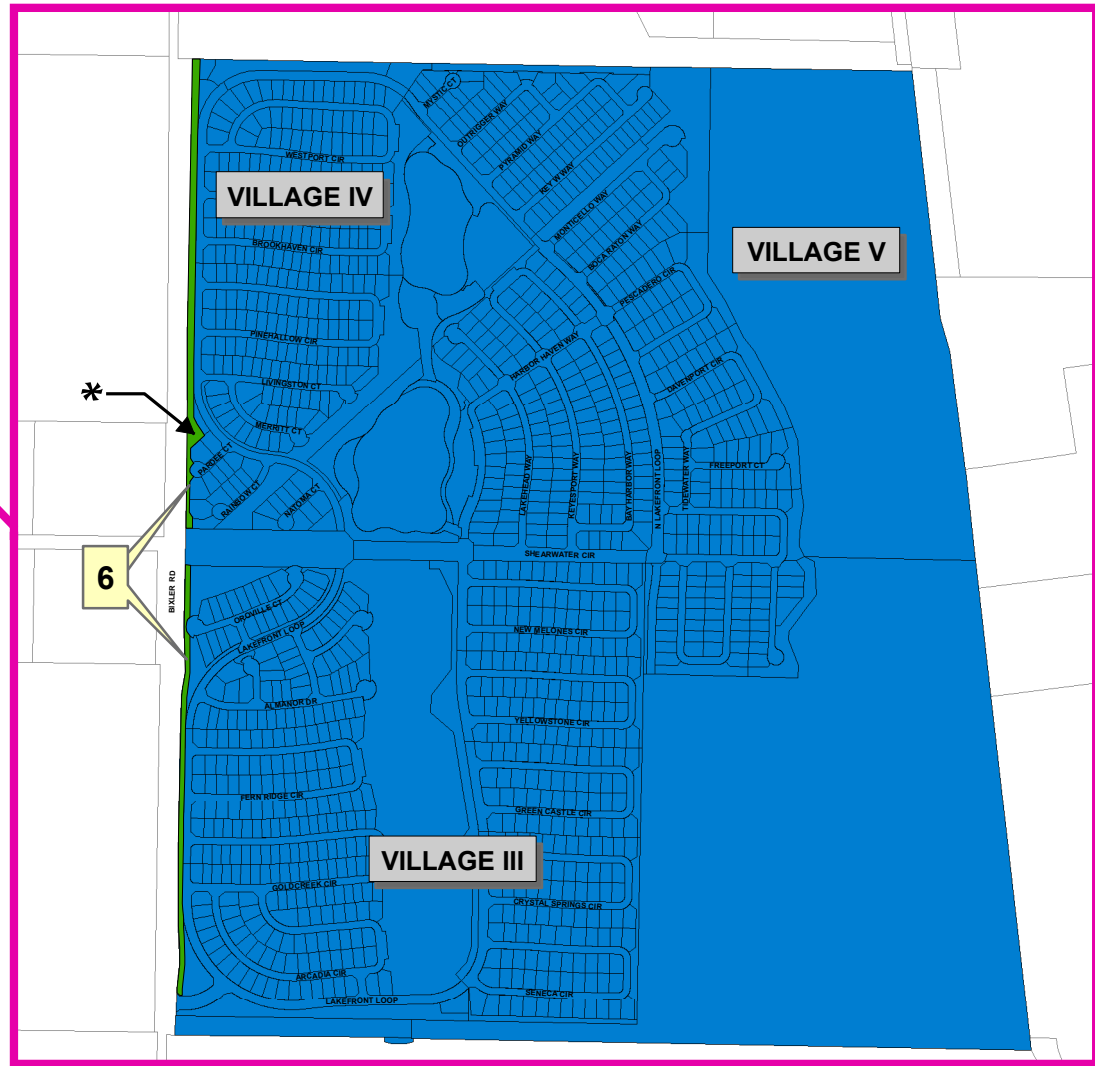


Assessment Diagram Contra Costa County LL-2 Zone 61



Page 2

Page 1



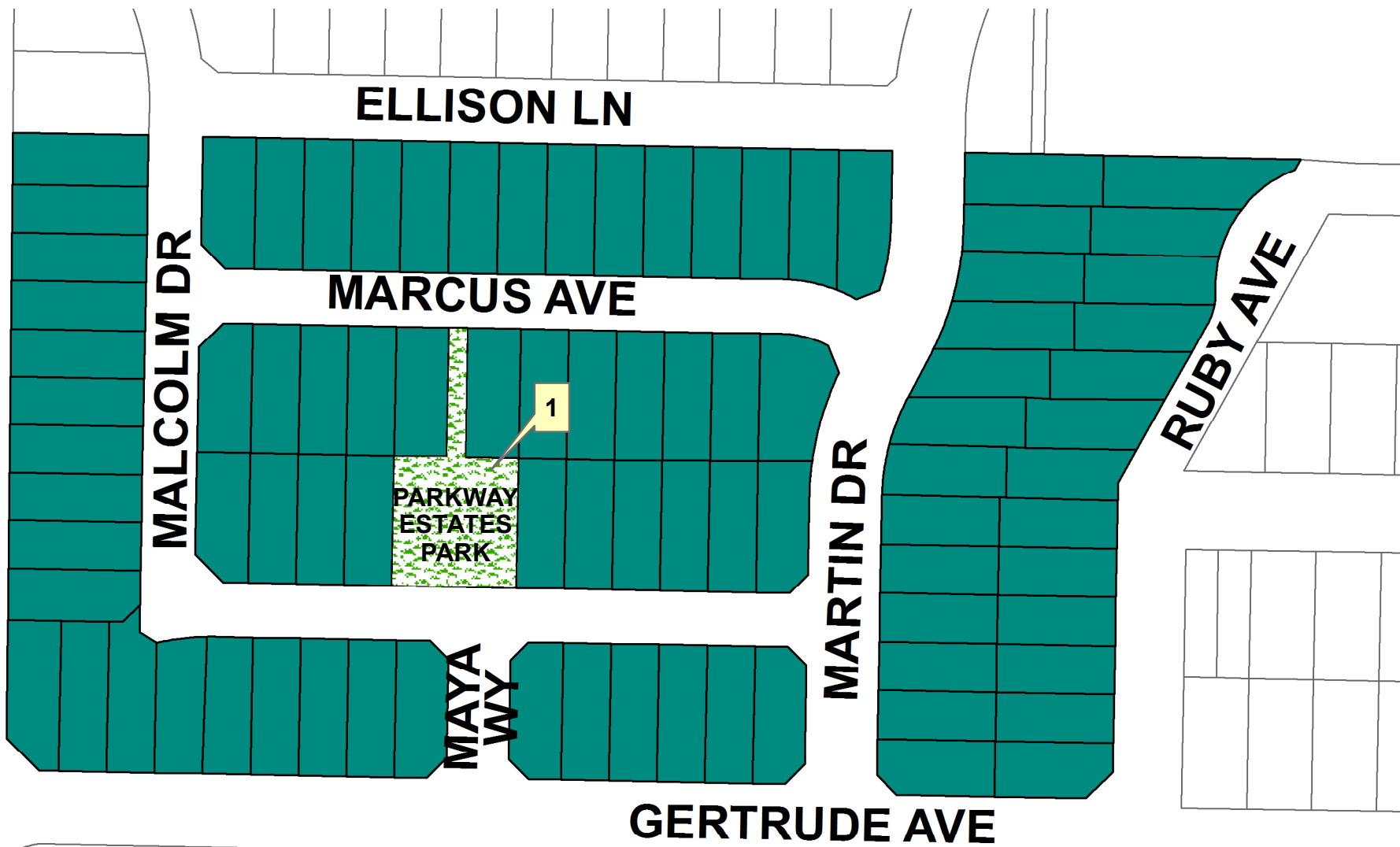
LEGEND

- Frontage/Median Landscaping
- Parks
- Open Space
- Trails
- Park & Ride Lots
- Indicates Maintenance Area from Part A in Engineer's Report

* County maintained landscape areas are all on the east side of Bixler Road. There are intermittent pockets at entryways which are maintained by other services (HOAs).

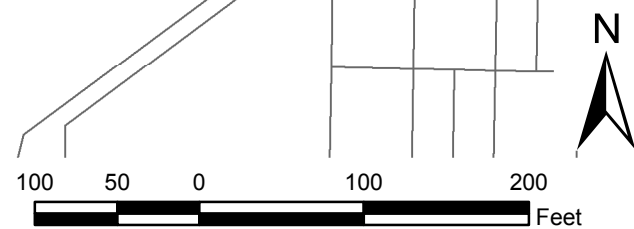


Assessment Diagram
Contra Costa County LL-2
Zone 63



LEGEND

- Frontage/Median Landscaping
- Parks
- Open Space
- Trails
- Indicates Maintenance Area from Part A in Engineer's Report

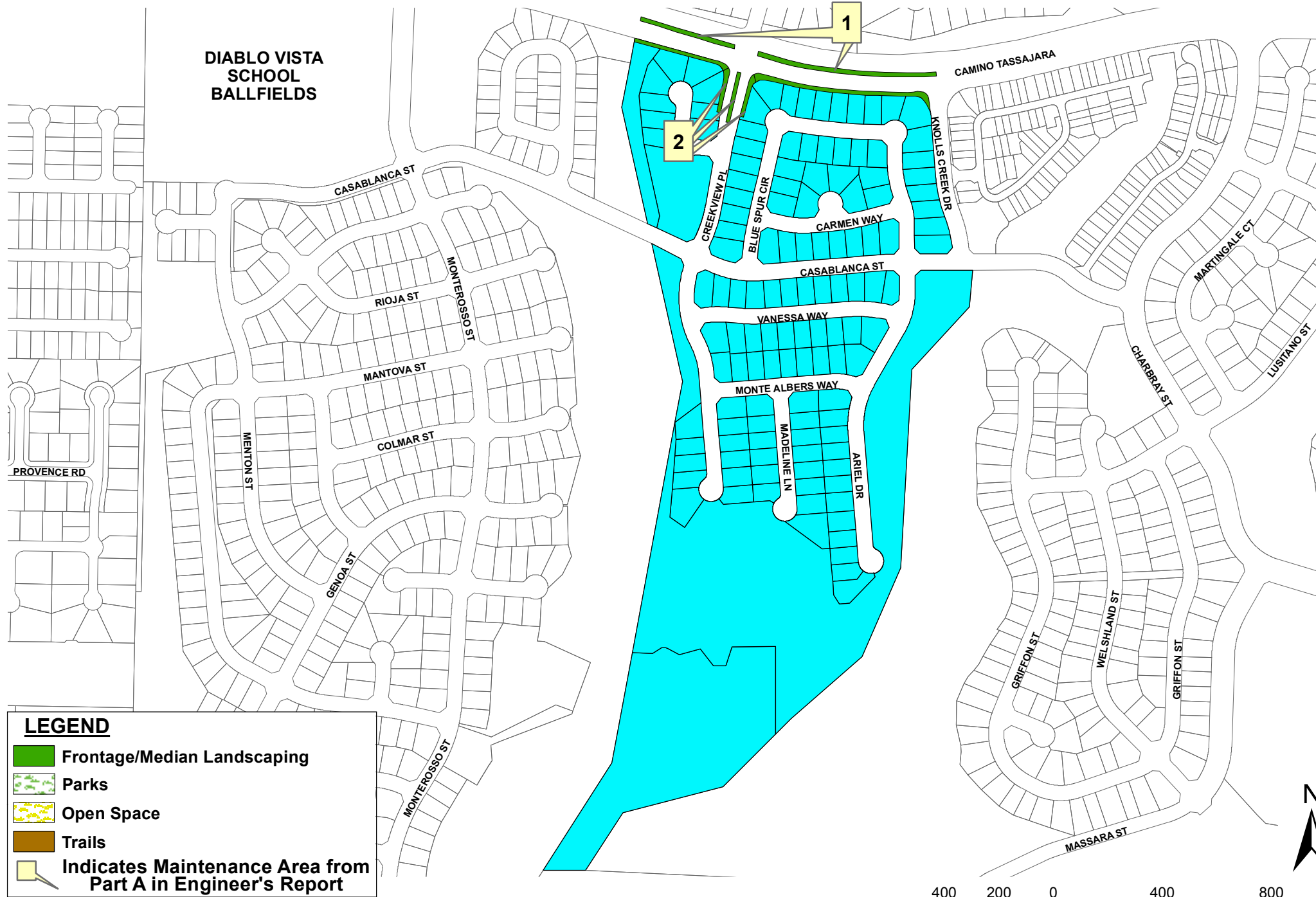


Assessment Diagram Contra Costa County LL-2 Zone 64

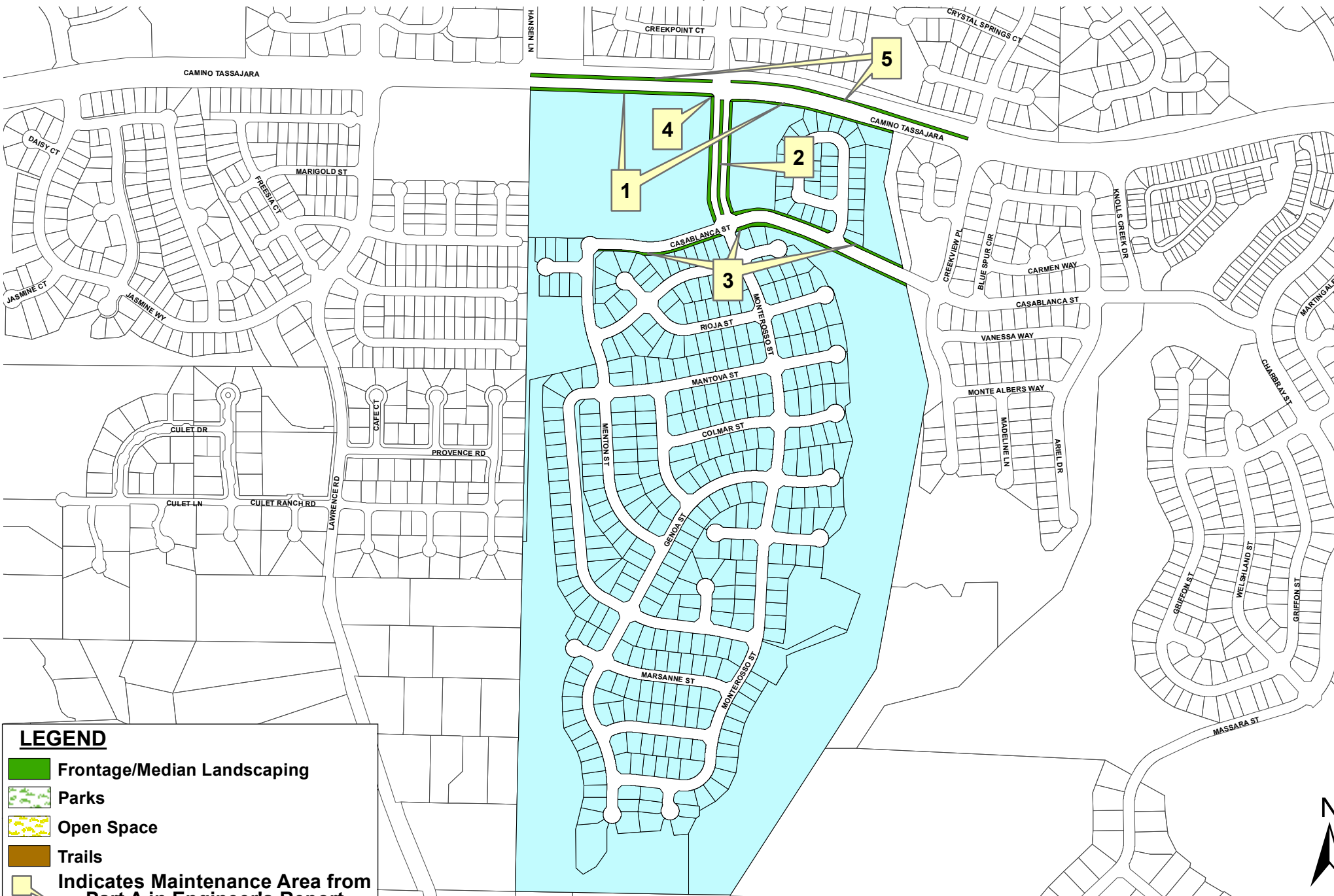


Assessment Diagram Contra Costa County LL-2 Zone 68

**DIABLO VISTA
SCHOOL
BALLFIELDS**



Assessment Diagram Contra Costa County LL-2 Zone 70

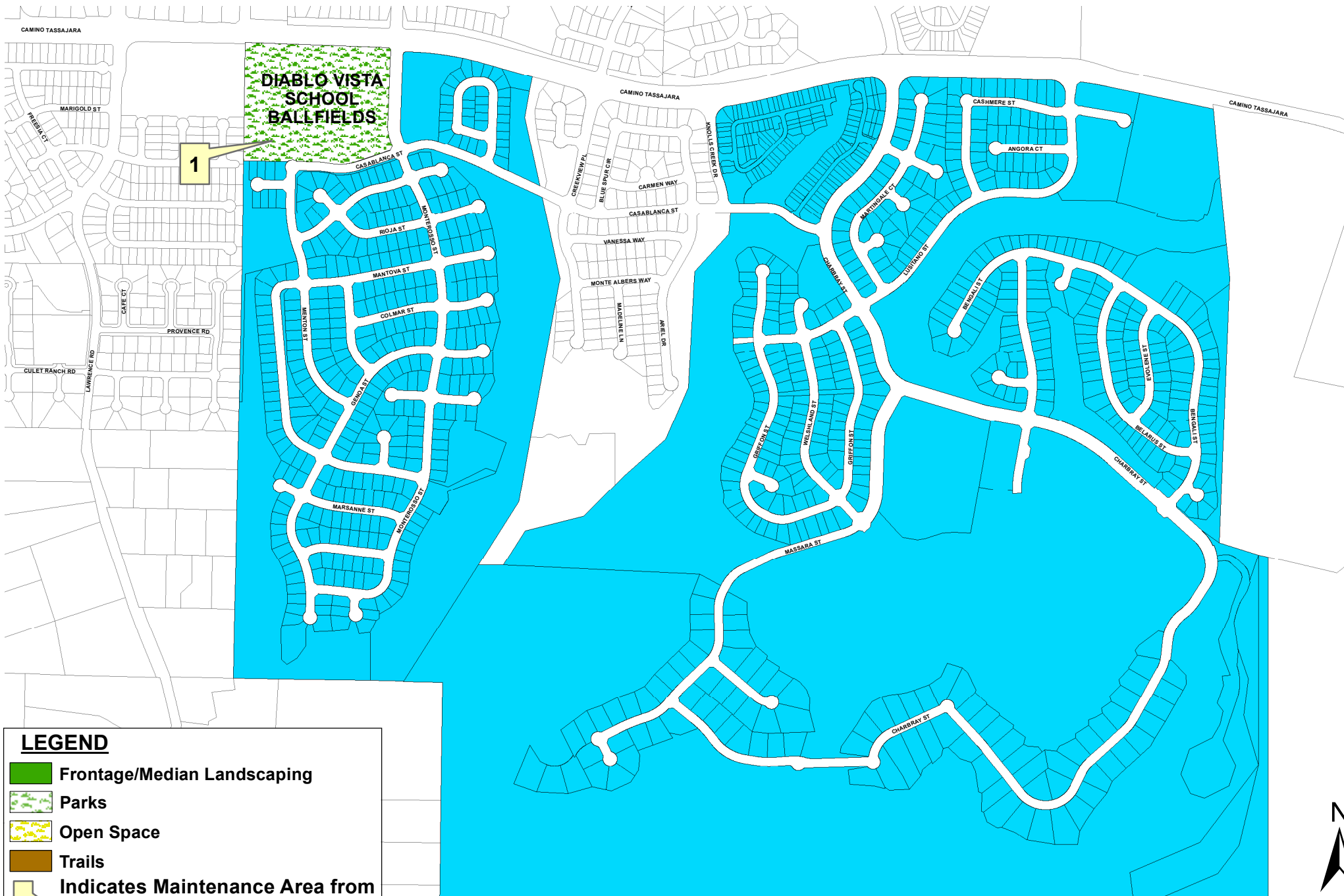


LEGEND

- Frontage/Median Landscaping
- Parks
- Open Space
- Trails
- Indicates Maintenance Area from Part A in Engineer's Report



Assessment Diagram Contra Costa County LL-2 Zone 71



LEGEND

- Frontage/Median Landscaping
- Parks
- Open Space
- Trails
- Indicates Maintenance Area from Part A in Engineer's Report



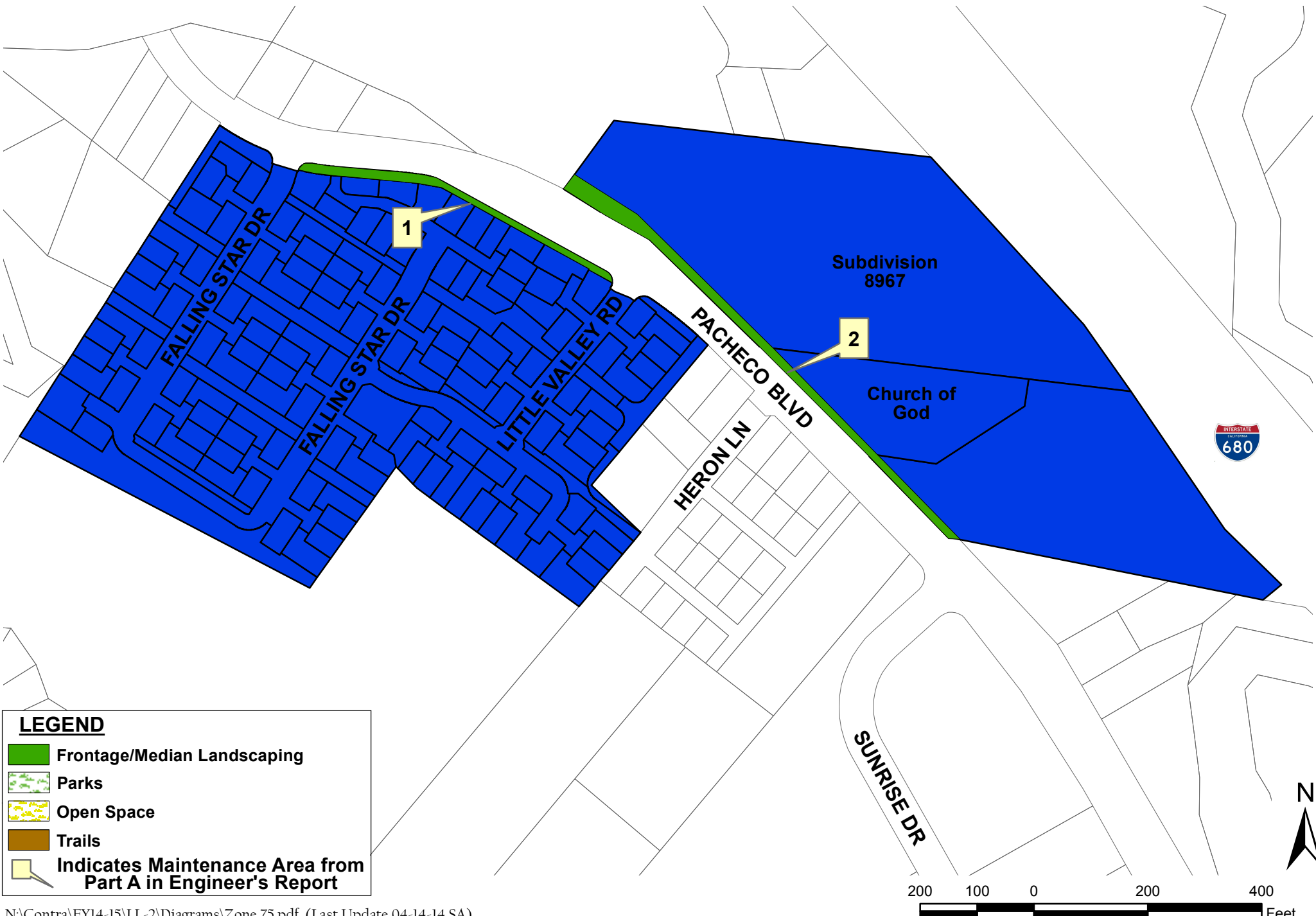
Assessment Diagram Contra Costa County LL-2 Zone 74





LEGEND

- Frontage/Median Landscaping
- Parks
- Open Space
- Trails
- Indicates Maintenance Area from Part A in Engineer's Report

Assessment Diagram Contra Costa County LL-2 Zone 75



LEGEND

-  Frontage/Median Landscaping
-  Parks
-  Open Space
-  Trails
-  Indicates Maintenance Area from Part A in Engineer's Report