



# Contra Costa - Alliance Compliance Report

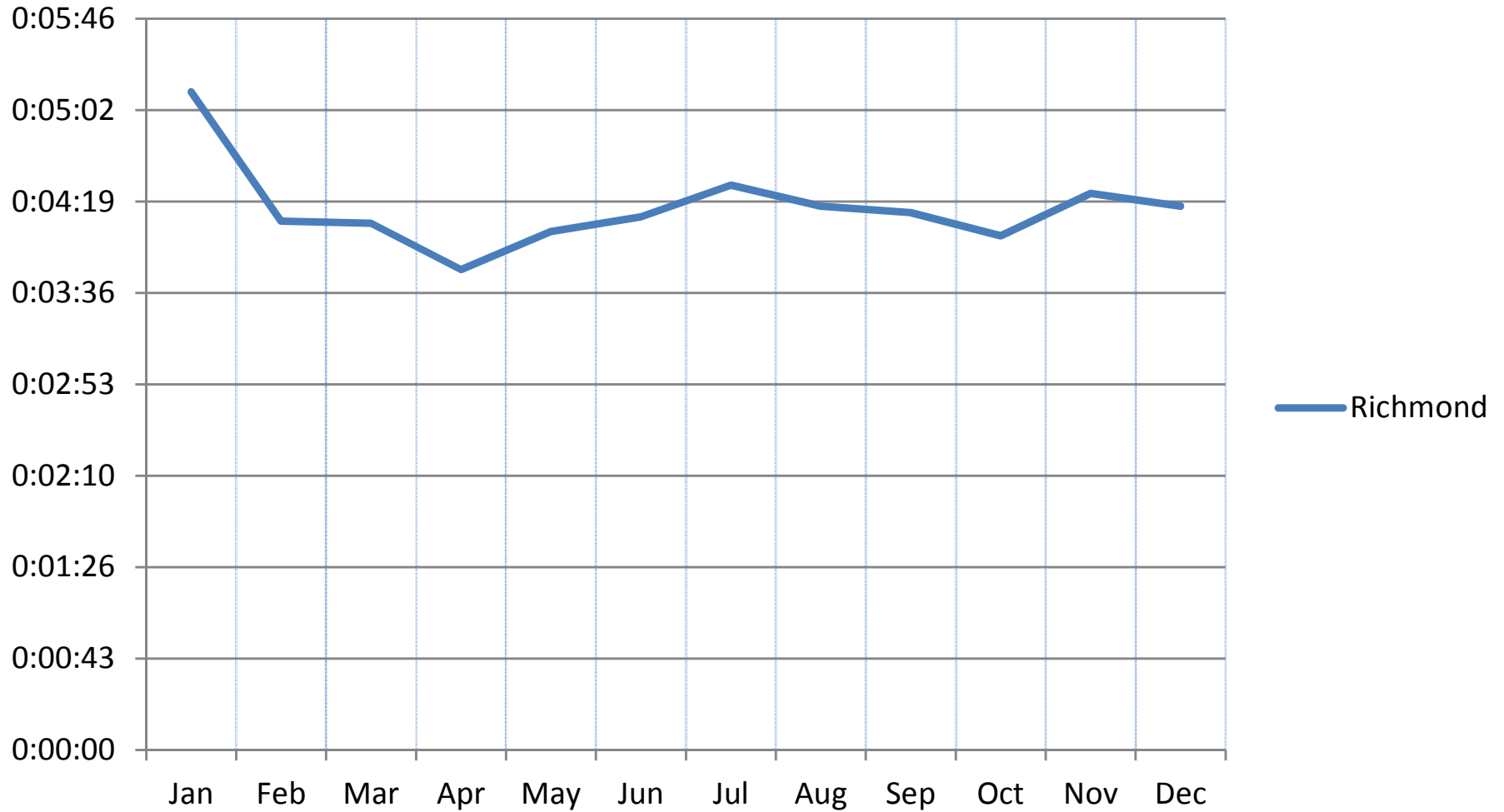
Period: Feb 01 2016 to Dec 31 2016

		Compliance Reporting											
Zone	Priority	On Time	Late	Total Incidents	Do Not Count	Adjusted Total Incidents	Adjusted Late	Exemptions Requested	Exemptions Approved	Time Corrections Approved	Compliance Calculated Incidents	Compliance Calculated Late	Response Time Compliance
Zone A HD	Priority 1 - 10:00	7253	819	8072	3	8069	819	11	11	313	8058	505	93.73%
	Priority 3 - 30:00	3555	158	3713	7	3706	154	0	0	128	3706	26	99.30%
Zone A LD	Priority 1 - 20:00	1	0	1	0	1	0	0	0	0	1	0	100.00%
	Priority 3 - 45:00	1	0	1	0	1	0	0	0	0	1	0	100.00%
Zone A	Priority 1	7254	819	8073	3	8070	819	11	11	313	8059	505	93.73%
TOTAL	Priority 3	3556	158	3714	7	3707	154	0	0	128	3707	26	99.30%
Zone B HD	Priority 1 - 11:45	7991	766	8757	10	8747	765	8	8	277	8739	482	94.48%
	Priority 3 - 30:00	4007	65	4072	9	4063	65	0	0	48	4063	17	99.58%
Zone B LD	Priority 1 - 20:00	48	2	50	0	50	2	0	0	2	50	0	100.00%
	Priority 3 - 45:00	11	0	11	0	11	0	0	0	0	11	0	100.00%
Zone B	Priority 1	8039	768	8807	10	8797	767	8	8	279	8789	482	94.52%
TOTAL	Priority 3	4018	65	4083	9	4074	65	0	0	48	4074	17	99.58%
Zone C HD	Priority 1 - 11:45	18559	1737	20296	12	20284	1732	13	13	575	20271	1148	94.34%
	Priority 3 - 30:00	9863	139	10002	15	9987	137	0	0	88	9987	49	99.51%
Zone C LD	Priority 1 - 20:00	97	10	107	0	107	10	0	0	5	107	5	95.33%
	Priority 3 - 45:00	33	1	34	1	33	0	0	0	0	33	0	100.00%
Zone C	Priority 1	18656	1747	20403	12	20391	1742	13	13	580	20378	1153	94.34%
TOTAL	Priority 3	9896	140	10036	16	10020	137	0	0	88	10020	49	99.51%
Zone D BISL	Priority 1 - 16:45	174	45	219	0	219	45	0	0	10	219	35	84.02%
Zone D HD	Priority 1 - 11:45	15826	1633	17459	12	17447	1631	11	11	570	17436	1052	93.97%
	Priority 3 - 30:00	8661	112	8773	12	8761	109	1	1	65	8760	43	99.51%
Zone D LD	Priority 1 - 20:00	469	32	501	0	501	32	0	0	15	501	17	96.61%
	Priority 3 - 45:00	201	2	203	0	203	2	0	0	1	203	1	99.51%
Zone D	Priority 1	16469	1710	18179	12	18167	1708	11	11	595	18156	1104	93.92%
TOTAL	Priority 3	8862	114	8976	12	8964	111	1	1	66	8963	44	99.51%

# Average Response Time by City - 2016

Priority 1 (Lights/Sirens) Response

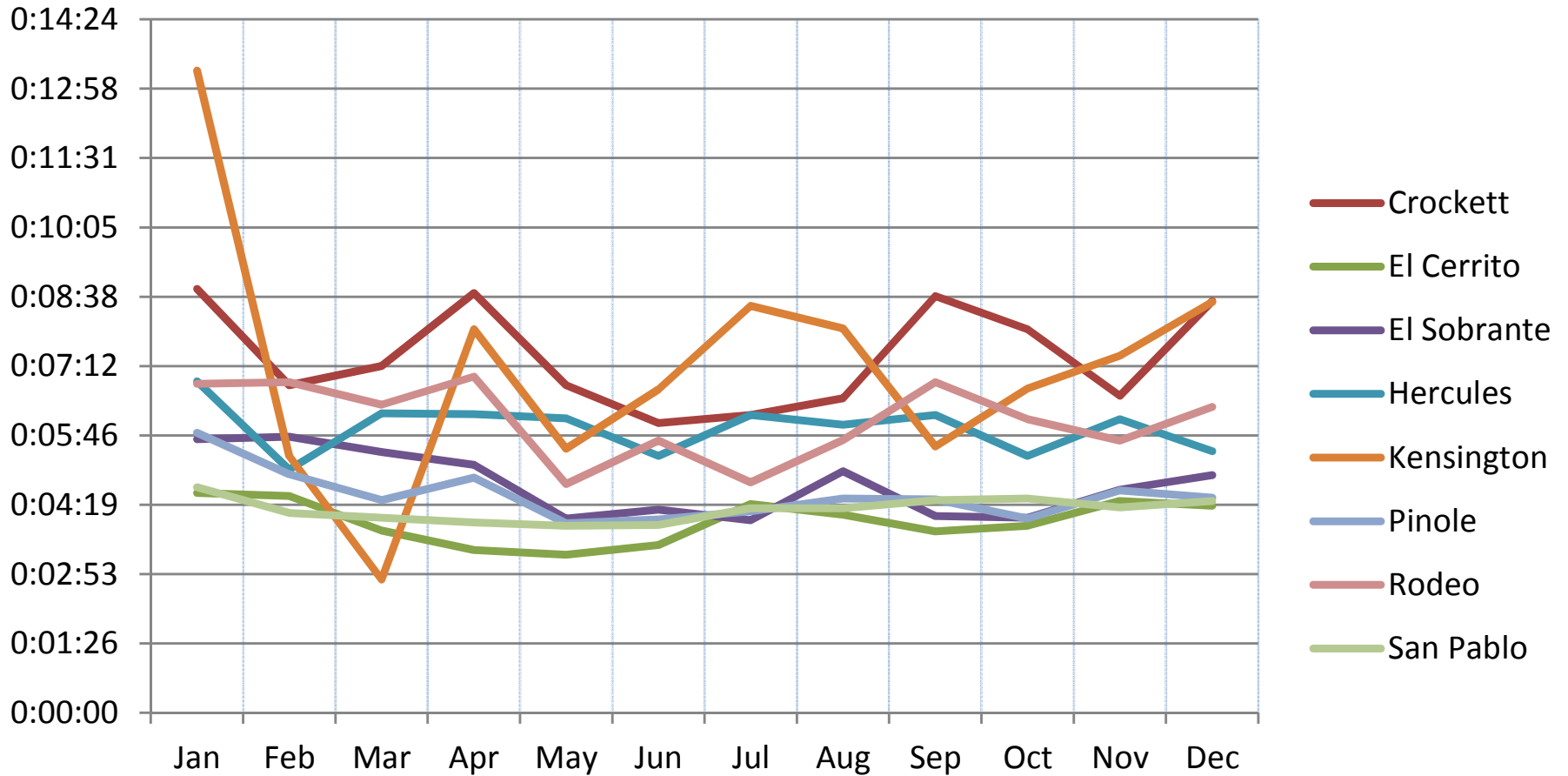
Alliance Zone A



# Average Response Time by City - 2016

## Priority 1 (Lights/Sirens) Response

### Alliance Zone B

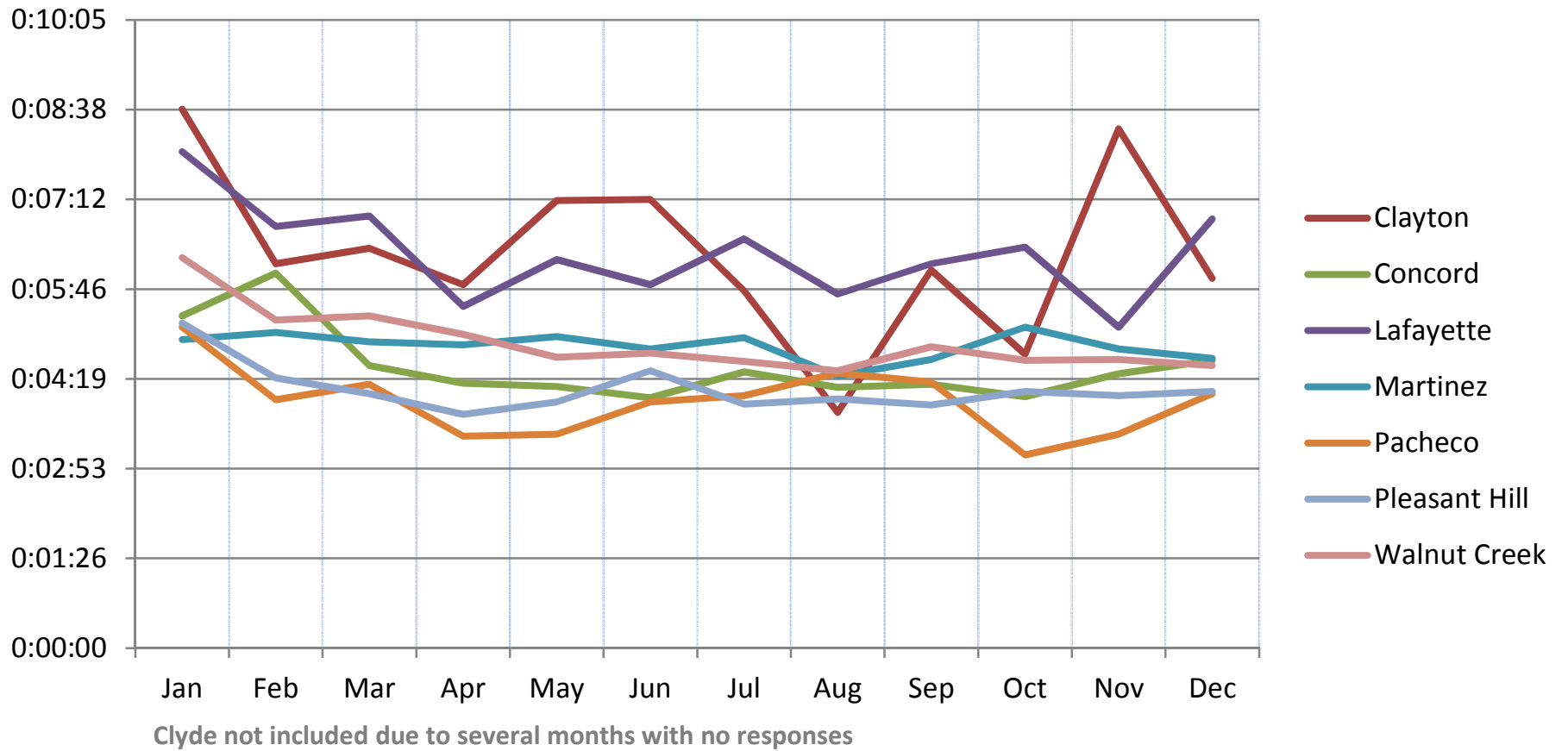


Port Costa not included due to several months with no responses

# Average Response Time by City - 2016

## Priority 1 (Lights/Sirens) Response

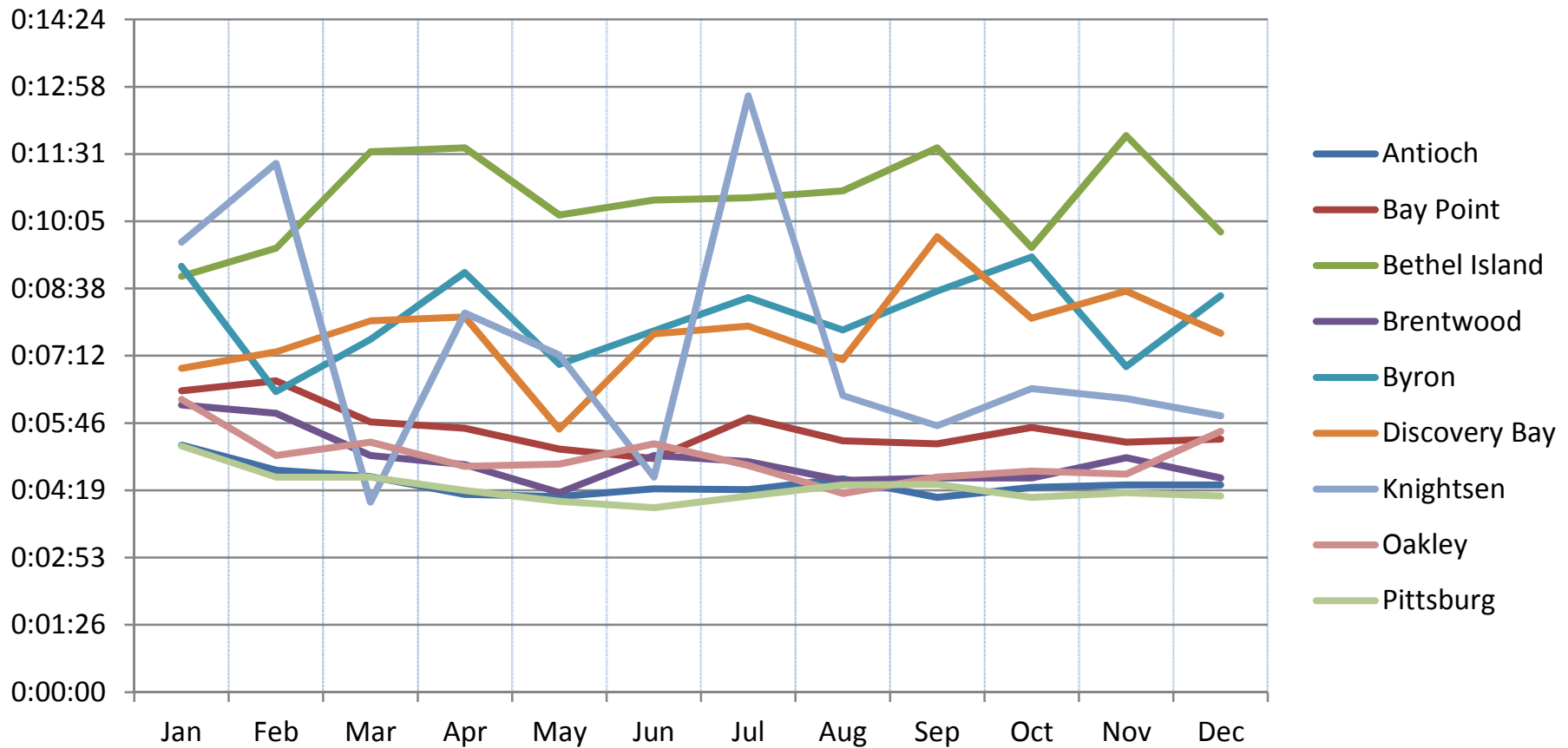
### Alliance Zone C



# Average Response Time by City - 2016

## Priority 1 (Lights/Sirens) Response

### Alliance Zone D



**2016 Outlier Report - by City/Response Priority**

**Outlier Criteria: Priority 1: High Density (>18:59)**

**Priority 1 High Density- Bethal Island (>29:59)**

**Priority 1 Low Density (>59:59) Priority 3 High Density (>39:59)**

	Outlier Count	Maximum Outlier Time	Minimum Outlier Time	Average Outlier Time	90th Percentile Outlier Time
Antioch	38	0:49:00	0:19:00	0:24:30	0:35:31
Priority 1	37	0:35:57	0:19:00	0:23:50	0:32:25
Priority 3	1	0:49:00	0:49:00	0:49:00	0:49:00
Bay Point	12	0:44:34	0:21:08	0:28:46	0:44:22
Priority 1	10	0:33:58	0:21:08	0:25:41	0:33:31
Priority 3	2	0:44:34	0:43:55	0:44:14	0:44:30
Bethel Island	1	0:31:05	0:31:05	0:31:05	0:31:05
Priority 1	1	0:31:05	0:31:05	0:31:05	0:31:05
Priority 3	0	0:00:00	0:00:00	0:00:00	0:00:00
Brentwood	16	0:46:44	0:19:01	0:28:31	0:45:33
Priority 1	13	0:46:44	0:19:01	0:24:54	0:39:36
Priority 3	3	0:45:02	0:42:53	0:44:14	0:44:59
Clayton	6	0:47:24	0:20:05	0:30:16	0:46:47
Priority 1	4	0:25:10	0:20:05	0:22:01	0:24:08
Priority 3	2	0:47:24	0:46:10	0:46:47	0:47:17
Concord	43	0:59:55	0:19:08	0:25:35	0:38:30
Priority 1	40	0:59:55	0:19:08	0:24:02	0:30:12
Priority 3	3	0:50:24	0:41:51	0:46:20	0:49:40
Crockett	3	0:20:32	0:19:59	0:20:10	0:20:26
Priority 1	3	0:20:32	0:19:59	0:20:10	0:20:26
Priority 3	0	0:00:00	0:00:00	0:00:00	0:00:00
Discovery Bay	22	0:37:23	0:19:23	0:24:59	0:44:51
Priority 1	22	0:37:23	0:19:23	0:24:59	0:35:17
Priority 3	0	0:00:00	0:00:00	0:00:00	0:00:00
El Cerrito	12	0:55:52	0:19:48	0:30:22	0:51:22
Priority 1	10	0:38:16	0:19:48	0:26:46	0:37:46
Priority 3	2	0:55:52	0:40:51	0:48:22	0:33:45
El Sobrante	6	0:35:10	0:19:09	0:25:52	0:32:14
Priority 1	6	0:35:10	0:19:09	0:25:52	0:32:14
Priority 3	0	0:00:00	0:00:00	0:00:00	0:00:00
Hercules	7	0:48:18	0:19:10	0:23:59	0:32:20
Priority 1	6	0:21:42	0:19:10	0:19:56	0:21:17
Priority 3	1	0:48:18	0:48:18	0:48:18	0:48:18
Kensington	4	0:32:37	0:19:20	0:24:00	0:29:59
Priority 1	4	0:32:37	0:19:20	0:24:00	0:29:59
Priority 3	0	0:00:00	0:00:00	0:00:00	0:00:00
Lafayette	13	0:37:26	0:19:58	0:25:18	0:37:10
Priority 1	13	0:37:26	0:19:58	0:25:18	0:35:43
Priority 3	0	0:00:00	0:00:00	0:00:00	0:00:00
Martinez	16	0:50:42	0:19:41	0:28:43	0:50:27
Priority 1	13	0:30:46	0:19:41	0:24:27	0:28:51
Priority 3	3	0:50:42	0:40:40	0:47:14	0:50:38
Oakley	6	0:45:10	0:19:06	0:28:00	0:41:07
Priority 1	5	0:37:04	0:19:06	0:24:35	0:31:53
Priority 3	1	0:45:10	0:45:10	0:45:10	0:45:10
Pinole	9	0:30:40	0:19:08	0:22:54	0:30:40
Priority 1	9	0:30:40	0:19:08	0:22:54	0:28:37
Priority 3	0	0:00:00	0:00:00	0:00:00	0:00:00
Pittsburg	33	0:43:53	0:19:03	0:25:41	0:41:11
Priority 1	29	0:30:21	0:19:03	0:23:24	0:29:39
Priority 3	4	0:43:53	0:41:03	0:42:12	0:43:30
Pleasant Hill	8	0:45:04	0:20:10	0:26:14	0:34:51
Priority 1	8	0:45:04	0:20:10	0:26:14	0:34:51
Priority 3	0	0:00:00	0:00:00	0:00:00	0:00:00
Richmond	55	0:59:14	0:19:01	0:26:41	0:41:39
Priority 1	50	0:59:14	0:19:01	0:25:08	0:33:39
Priority 3	5	0:46:40	0:40:31	0:42:15	0:44:52
Rodeo	5	0:34:26	0:19:03	0:23:10	0:29:59
Priority 1	5	0:34:26	0:19:03	0:23:10	0:29:59
Priority 3	0	0:00:00	0:00:00	0:00:00	0:00:00
San Pablo	8	0:45:09	0:21:04	0:30:13	0:43:19
Priority 1	7	0:45:09	0:21:04	0:28:28	0:38:14
Priority 3	1	0:42:32	0:42:32	0:42:32	0:42:32
Walnut Creek	56	1:20:08	0:18:59	0:29:18	0:45:27
Priority 1	52	1:20:08	0:18:59	0:27:44	0:33:54
Priority 3	4	0:57:18	0:41:22	0:49:36	0:56:09
Bradford Island	1	1:01:46	1:01:46	1:01:46	1:01:46
Priority 1 LD	1	1:01:46	1:01:46	1:01:46	1:01:46