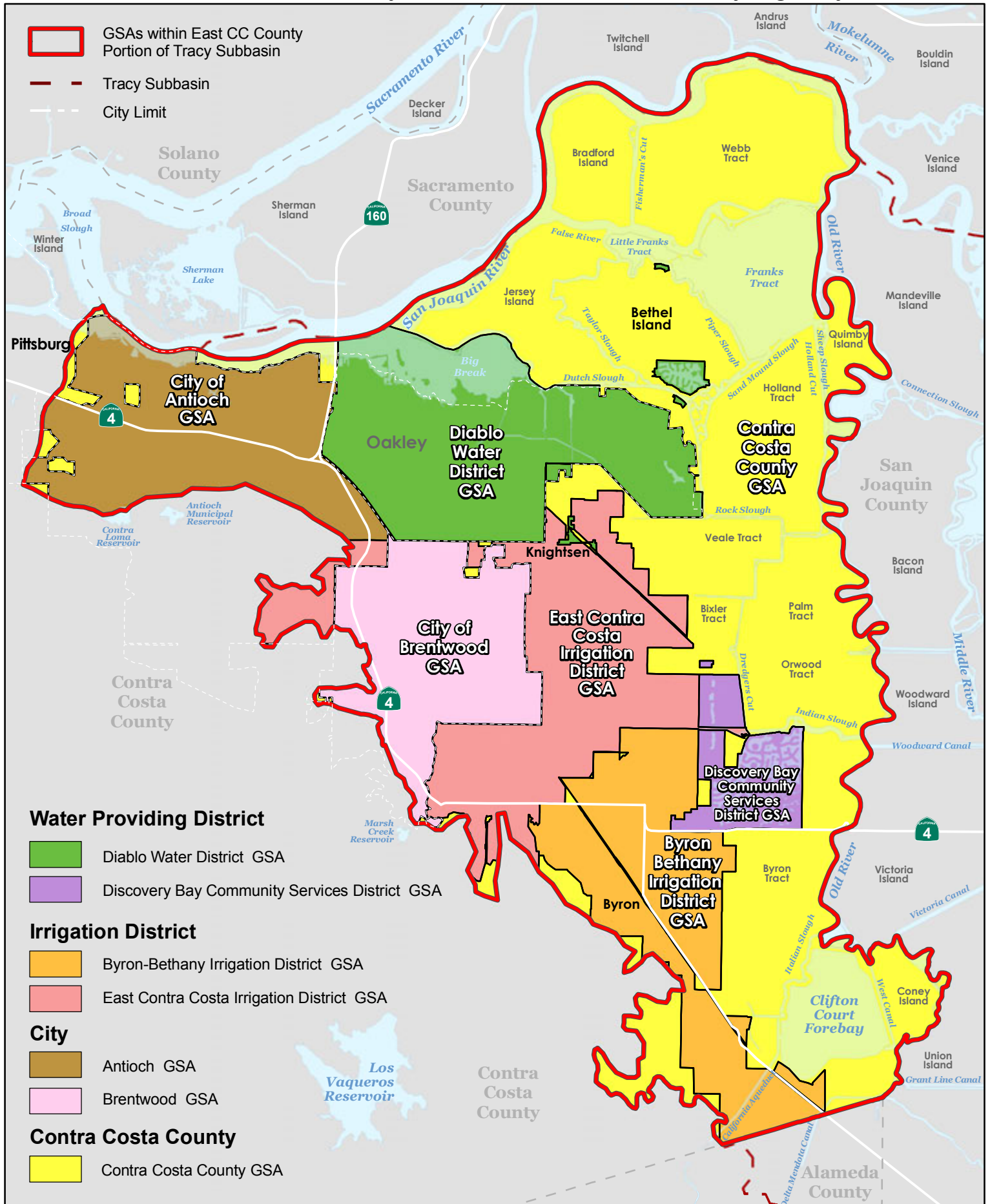


# Exhibit B - Contra Costa County Groundwater Sustainability Agency Formation



Map created 03/22/2017  
 by Contra Costa County Department of  
 Conservation and Development, GIS Group  
 30 Muir Road, Martinez, CA 94553  
 37:59:41.791N 122:07:03.756W

This map or dataset was created by the Contra Costa County Department of Conservation and Development with data from the Contra Costa County GIS Program. Some base data, primarily City Limits, is derived from the CA State Board of Equalization's tax rate areas. While obligated to use this data the County assumes no responsibility for its accuracy. This map contains copyrighted information and may not be altered. It may be reproduced in its current state if the source is cited. Users of this map agree to read and accept the County of Contra Costa disclaimer of liability for geographic information.

