



MCE

A local, not-for-profit electricity provider

OUR MISSION

Address climate change by
reducing greenhouse gas emissions

Renewable Energy

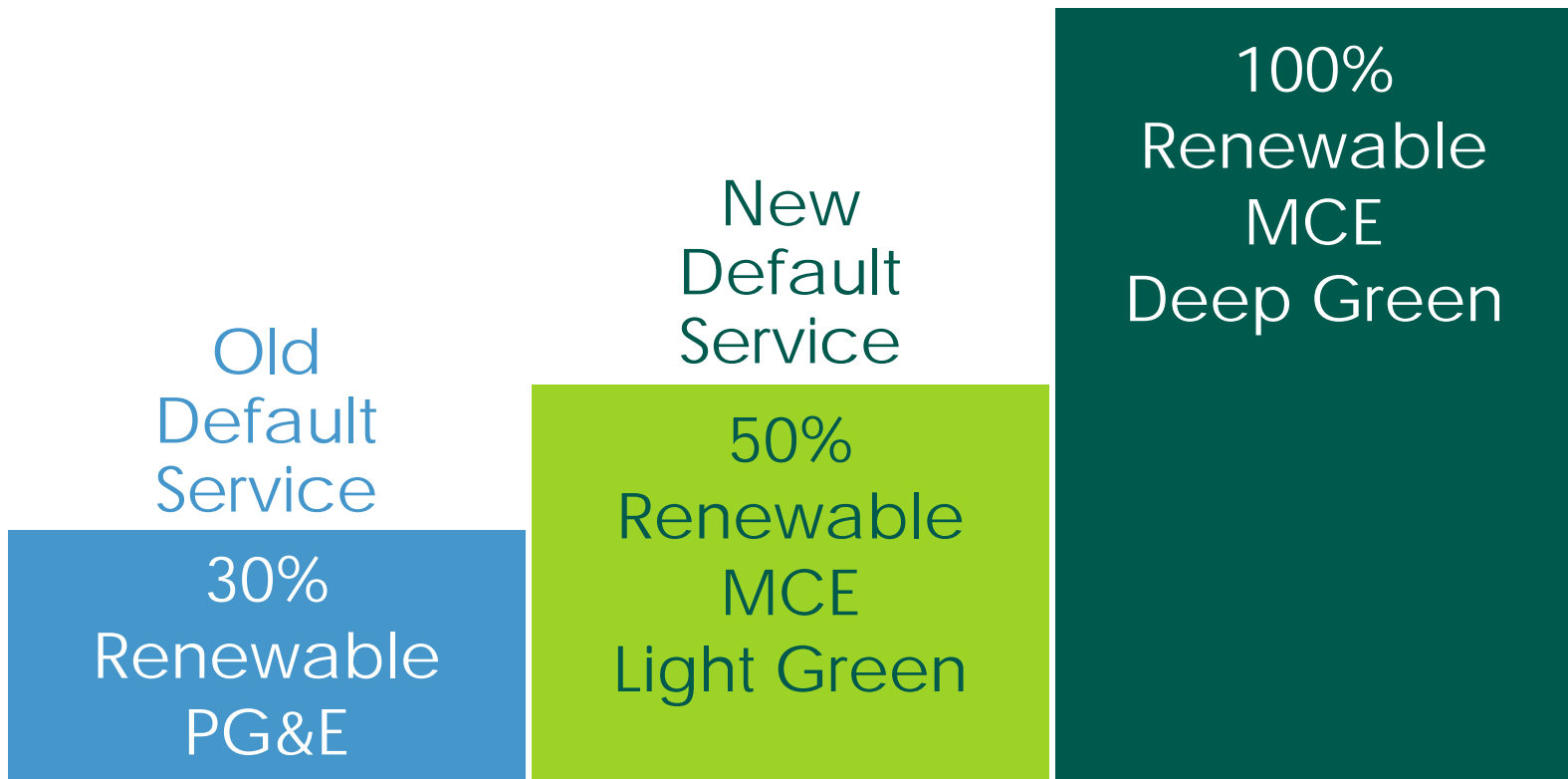
Stable, Competitive Rates

Local Economic & Workforce Benefits

Energy Efficiency



Choice Is Power



Sample Residential Cost Comparison

| | 30% renewable PG&E | 50% renewable MCE | 100% renewable MCE |
|---------------------|-----------------------|----------------------|-----------------------|
| Electric Delivery | \$57.45 | | |
| Electric Generation | \$45.55 | \$31.48 | \$36.11 |
| Added PG&E Fees | - | \$13.78 | \$13.78 |
| Monthly Cost | \$103.00 | \$102.72 | \$107.35 |

Based on a typical usage of 463 kWh at current PG&E and MCE E-1 rates to go into effect April 1, 2017. Actual differences may vary depending on usage, rate schedule, and other factors. Estimate provided is an average of seasonal rates.

Local Control

Present

MCE Voting Share Highlights

Largest Board Vote
Walnut Creek

Second Largest Board Vote
Richmond

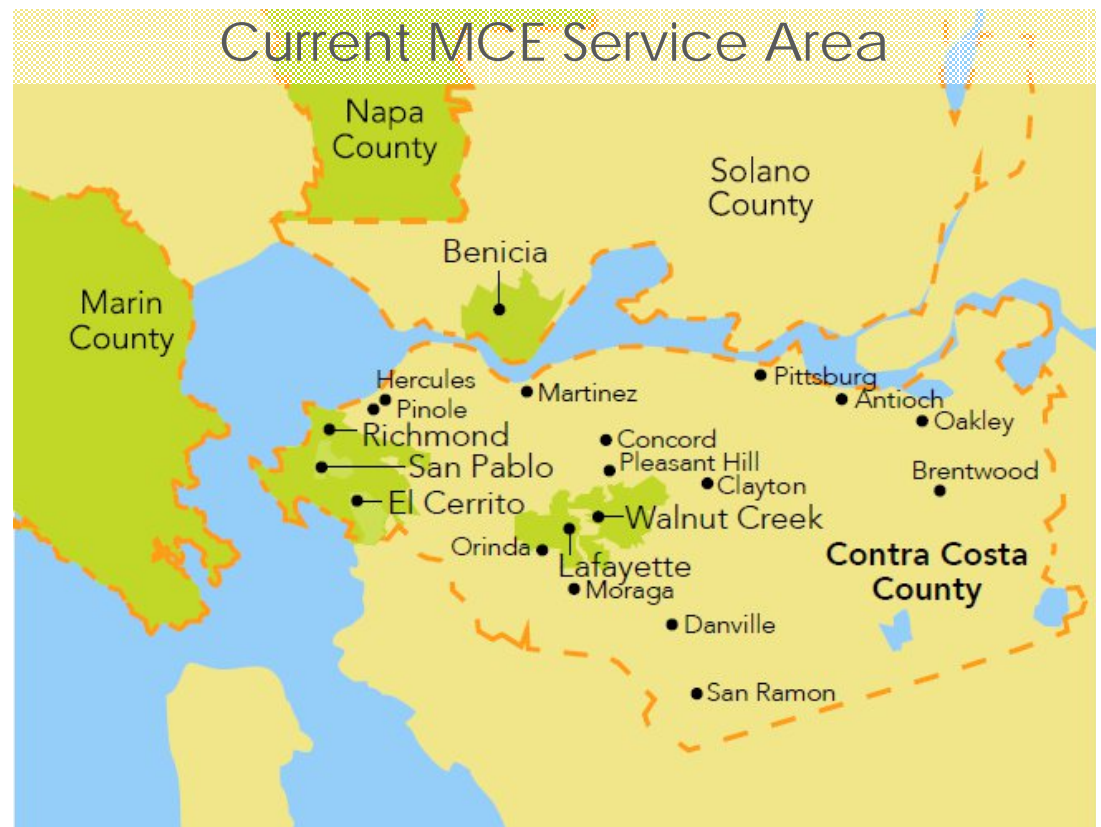
Potential*

MCE Voting Share Highlights

Largest Board Vote
Contra Costa County

Second Largest Board Vote
Concord

*If Contra Costa County and remaining cities join MCE



Community Benefits



Minimize Financial Risk

Avoid

- Start up costs
- Need for funding
- Guarantee for loans

Take advantage of

- Free inclusion period
- Track Record
- Economics of scale
- Long term contracts
- Locked-in low wholesale prices
- Established credit profile
- Experienced community outreach
- Firewall between MCE and member agencies
- \$50M in reserves

MCE customers
eliminated
122,102 metric
tons of
greenhouse
gas emissions,
2010-2014

equivalent to taking 25,792 cars
off our roads for an entire year



Greenhouse Gas Impact

Progress toward 2020 Climate Action Plans

Unincorp. County: 27%

Concord: 25%

Antioch: 26%

San Ramon: 51%

Pittsburg: 73%

Danville: 54%

Lafayette: 20%

Moraga: 66%

Total Projected Reductions Equivalent To:



509,586,503 Miles Not Driven



5,510,394 Trees Planted



44,913 Cars off the Road

212,624 Metric Tons CO₂

Solar
rebates for
residential
customers

Contra Costa

Since 2014: \$35,400 on low-income
solar rebates for Contra Costa homes

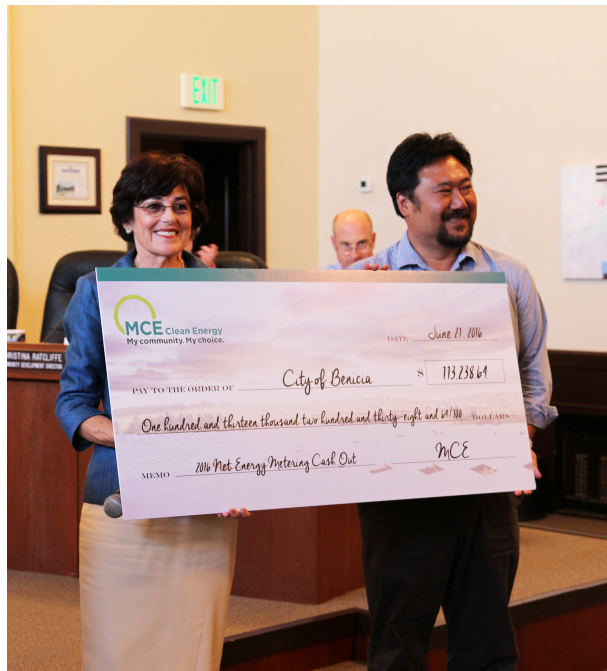


Solar Cash Out

2016:
MCE customers
earn \$1 Million+

\$250,000 in
Contra Costa

West Contra Costa School District : \$28,000+
City of San Pablo: \$7,500+



MCE Feed-In Tariff (FIT) Program

Turn unused space into a revenue stream

One of the most competitively priced FIT programs in California

Advantages of MCE FIT contract:

- Standardized, 20-year term
- Fixed price per MWh generated
- Accurately reflects project revenue
- Can help secure project financing
- Much higher than market rates



Freethy Industrial Park

2 MW



- Richmond
- February 2017
- 26 jobs supported
 - RichmondBUILD
- Ground Mounted Solar
- \$550,000 yearly revenue
- Powering 600 homes per year

Solar One, Richmond

10.5 MW



- Richmond
- Expected online Q4 2017
- Chevron brownfield
- 341 jobs supported
 - 50% local hire requirement
- Partners: City of Richmond, Cenergy Power, RichmondBUILD

California Jobs

2,800+ jobs supported

1.2M+ union work hours created



Local Workforce Development

MCCDC ~\$240,000.

Rising Sun ~\$140,000

RichmondBUILD ~\$100,000

Rough total: ~\$480,000



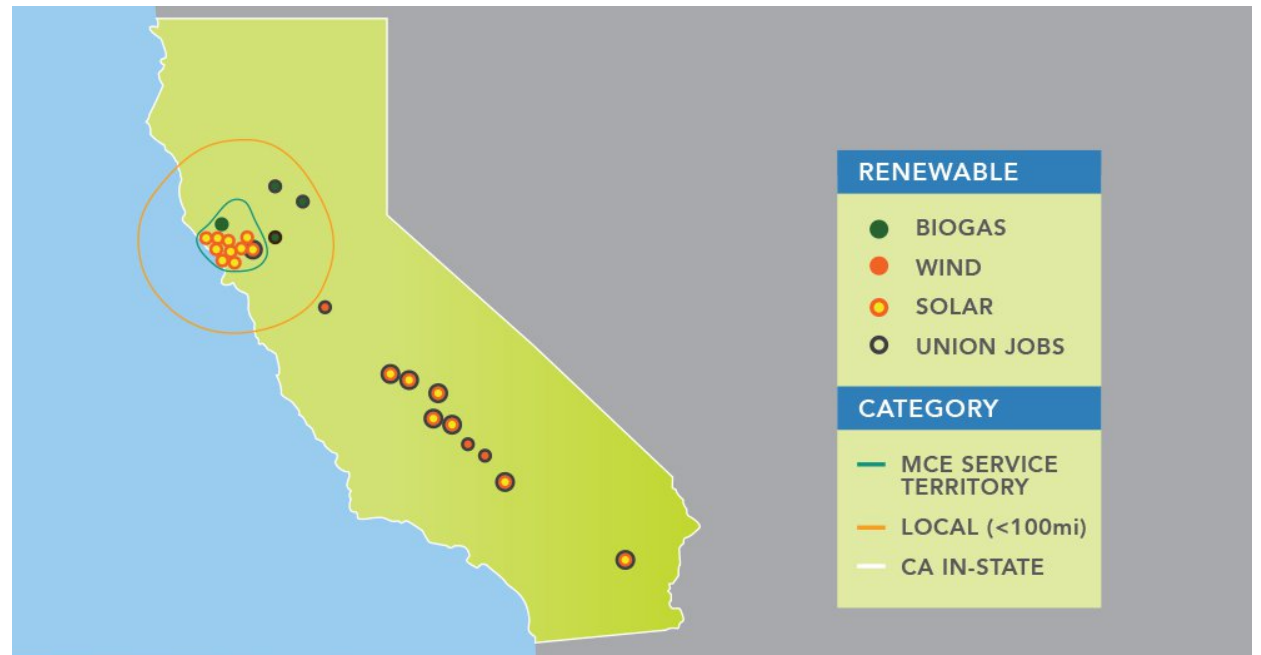
RichmondBUILD students on Solar One site

New California Renewables

\$1.6 Billion
committed

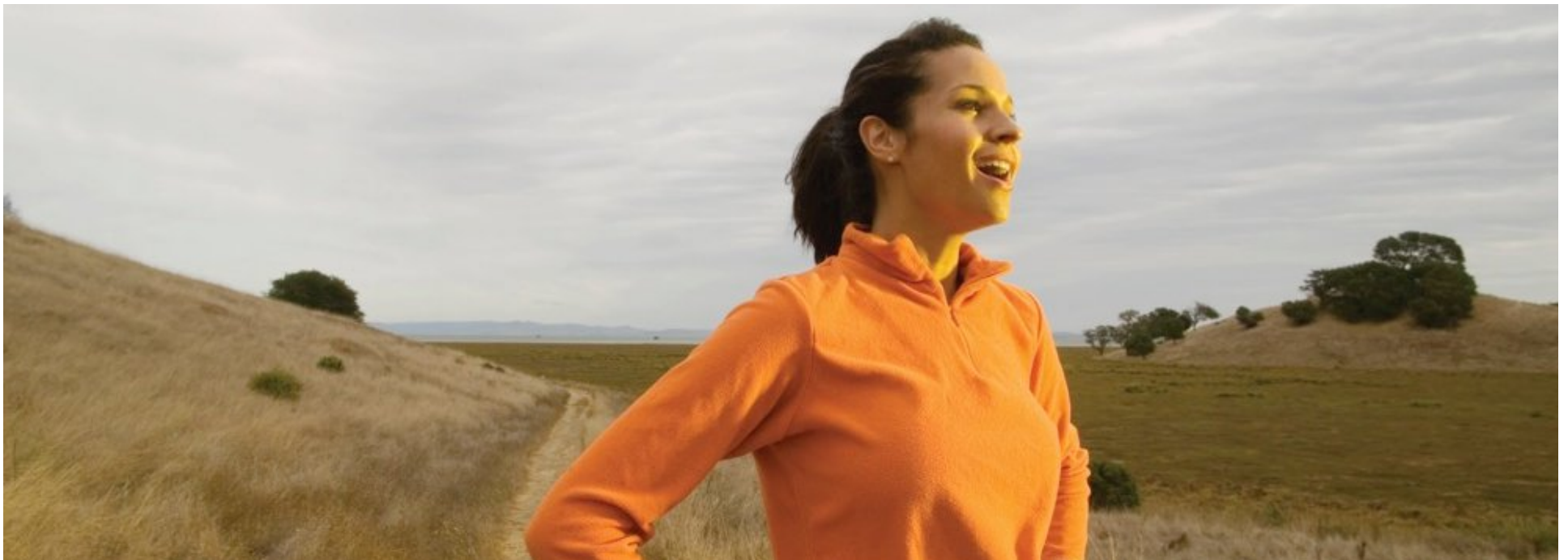
535 MW new solar
266 MW new wind
12 MW new biogas

24 Projects 813 megawatts



Light Green Power Content Goal

75% carbon-free by 2017 & 100% carbon-free by 2025





Celebrating 100 for 100 with El Cerrito's Environmental Quality Commission

Contra Costa County 2017 Community Outreach

- 1/5 Leadership Contra Costa / Environmental Session
- 1/10 Concord City Council Meeting CCA discussion
- 1/11 Moraga City Council Presentation
- 1/17 Contra Costa Board of Supervisors CCA discussion
- 1/17 Clayton City Council Presentation
- 1/18 Martinez City Council Presentation
- 1/18 Sustainable Lafayette Film Night
- 1/24 San Ramon City Council Presentation



MCE Panelist at Leadership Contra Costa

Contra Costa County 2017 Community Outreach

- 1/26 Exploring CCA in The San Ramon Valley with LEAN Energy U.S.
- 1/30 Boy Scouts Sustainability Merit Badge Meeting
- 2/6 Bentley School Presentation
- 2/6 Pleasant Hill Discussion on CCA
- 2/14 Antioch Discussion on CCA
- 2/15 Richmond Business Roundtable (Chamber of Commerce)
- 2/22 Concord Internal Ops Committee
- 2/23 Concord Public Workshop



Sporting some shades at the Sustainable Enterprise Conference in Pleasant Hill.

Contra Costa County 2017 Community Outreach

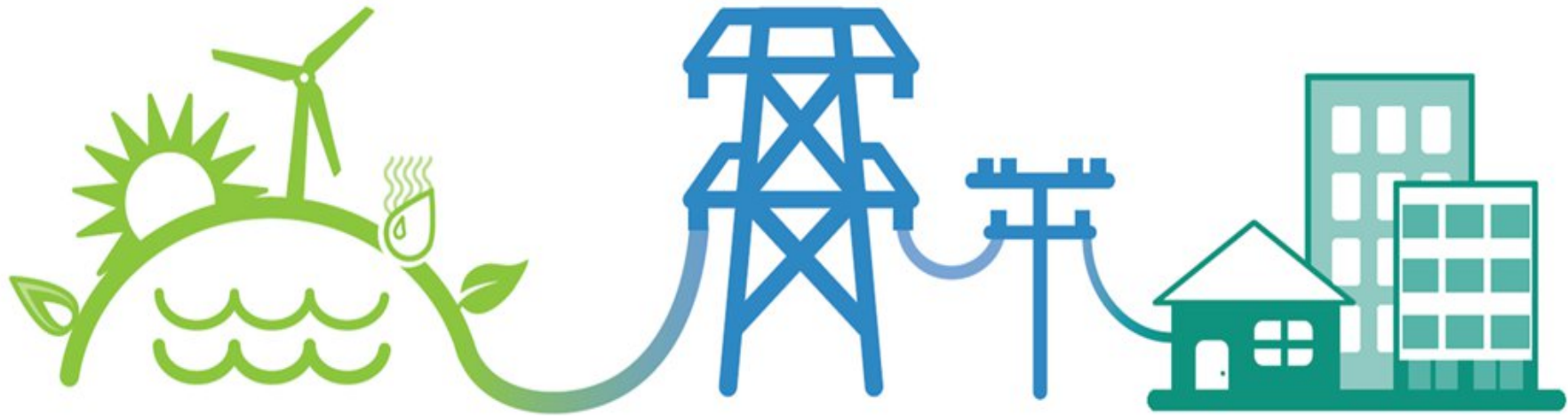
- 3/1 Lamorinda Tri-City Council meeting
- 3/1 Eskaton Hazel Shirley Manor - Senior Center Presentation
- 3/8 San Pablo Econ. Dev. Corp Business2Business Mixer
- 3/9 Catching the Sun Movie Screening with Sierra Club Bay Chapter
- 3/14 Oakley City Council meeting
- 3/16 Lafayette Film Night - Before the Flood
- 3/21 Contra Costa Climate Leaders Meeting
- 3/28 Contra Costa County Board of Supervisors

Thank You!

info@mceCleanEnergy.org
mceCleanEnergy.org



How Electric Service Works



MCE Generation

PG&E Delivery

Same Service


Sample Bill

 **ENERGY STATEMENT**
www.pge.com/MyEnergy

Account No: 1234567890-1
Statement Date: 10/01/2013
Due Date: 10/22/2013

Service For:

MARY SMITH
1234 STREET AVENUE
SAN RAFAEL, CA
94804

 **ENERGY STATEMENT**
www.pge.com/MyEnergy

Account No: 0123456789-0
Statement Date: 12/29/2015
Due Date: 01/19/2016

Service For:

Your Account Summary

| | |
|--|---------|
| Amount Due on Previous Statement | \$54.14 |
| Payment(s) Received Since Last Statement | -54.14 |
| Previous Unpaid Balance | \$0.00 |
| Current PG&E Electric Delivery Charges | \$34.94 |
| MCE Electric Generation Charges | 39.38 |
| Current Gas Charges | 13.55 |

Total Amount Due by 01/12/2016 **\$87.87**

Phone: 1-866-743-0335
www.pge.com/MyEnergy

Local Office Address

With MCE
Service

About MCE

| | |
|------|-----------------------------|
| 2008 | MCE formed |
| 2010 | Service launched |
| 2016 | Serving 255,000 accounts |



We Can
Change
Our Future

