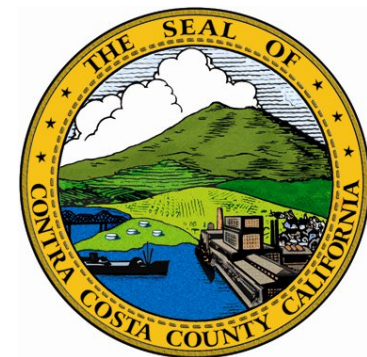


Community Choice Energy (CCE) In Contra Costa County

Contra Costa County Board of Supervisors
March 28, 2017



Activity Since January in Response to Board Direction



- Continued Public Outreach and Engagement
 - 8 City Council presentations
 - 2 Public Workshops in Danville and Concord
- Received Public Comments on Draft Study and over 300 Survey Responses
- Obtained Information from EBCE on Inclusion Process and Requirements
- Final Study Published on March 13, 2017

Comments on the Draft Study



- Comments received from MCE, IBEW, Sierra Club SF Bay Chapter, Contra Costa Clean Energy Alliance, several individuals
- Over 100 survey respondents also provided short narratives remarks
- All comments and survey responses are attached to the staff report
- Comments resulted to changes in the Technical Study in the following areas:
 - Cost of Local Renewables
 - MCE Board Representation
 - Availability of GHG Power Supplies, particularly Large Hydroelectric

Scope of the Technical Study



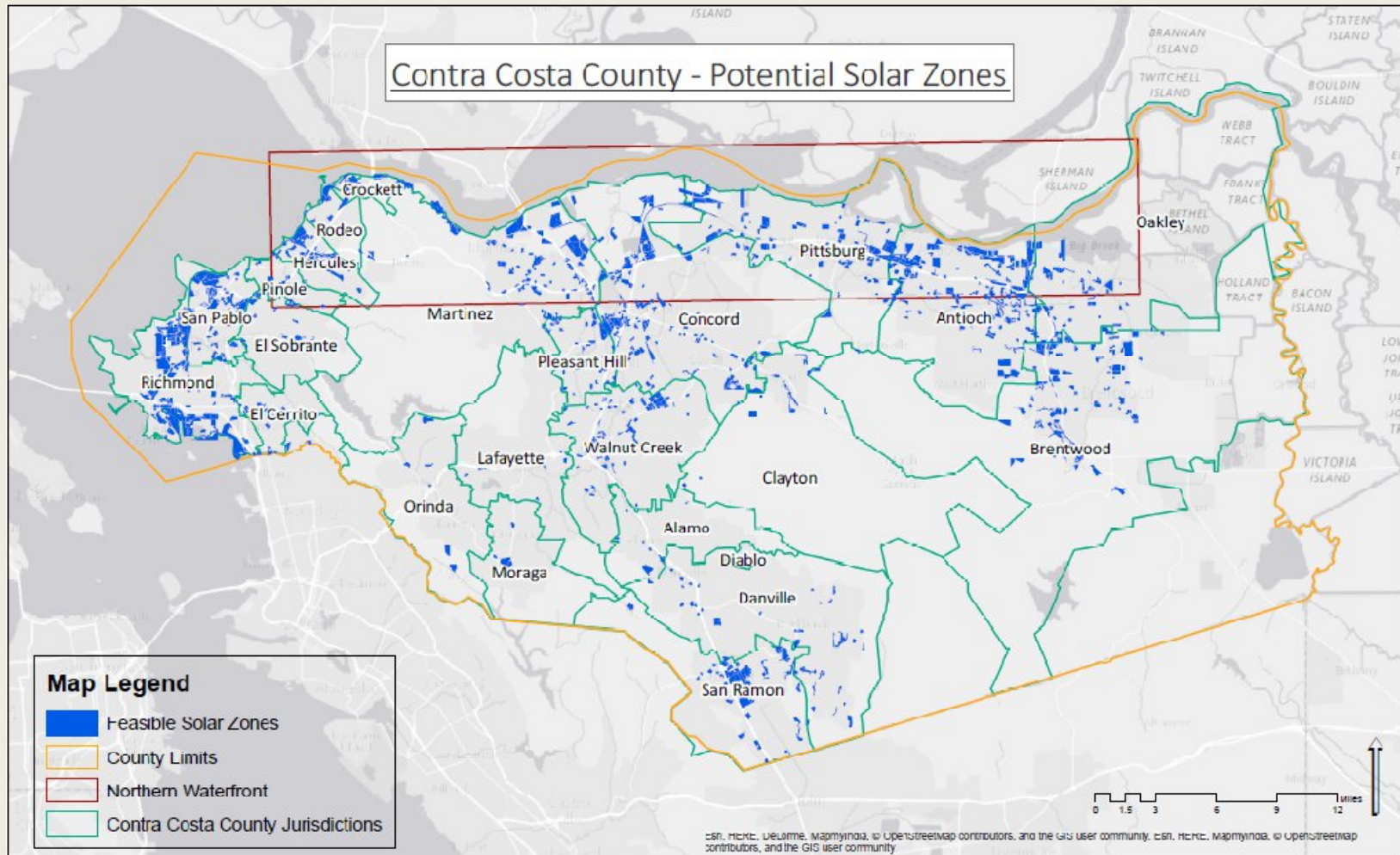
- Analyze the electrical load of the 15 participating jurisdictions
- Compare projected rates for PG&E and a Contra Costa CCE program under 4 different CCE energy supply scenarios
- Assess the ability of CCE to lower greenhouse gas (GHG) emissions
- Identify sites for potential local solar development
- Evaluate potential impact of CCE on local economy
- Provide a high level comparison of 3 CCE program alternatives (Contra Costa only, MCE, and East Bay Community Energy (EBCE)) to existing PG&E service

MAIN FINDINGS OF TECH STUDY



- All three of the CCE options considered in the study could result in:
 - lower GHG emissions
 - increased local renewable energy generation
 - increased local job creation
- The electricity rates under CCE program options considered would be similar or less than the PG&E rates.
- Enough technically feasible locations for renewable generation to meet a significant proportion of electricity demand (40% of these sites in Northern Waterfront).
- There are tradeoffs between forming a Contra Costa-only CCE versus joining existing/ongoing CCE efforts in neighboring counties

POTENTIAL FOR LOCAL SOLAR



CONTRA COSTA CCE PROGRAM OPTIONS



Options include:

1. Join MCE
2. Join EBCE (Alameda County)
3. Form a new, stand-alone CCE for County and cities not already with MCE
(Board previously indicated this is not the preferred option)

There are pros and cons/trade-offs to each option

Key Factors Examined:

- ✓ Rates
- ✓ GHG Reduction Potential
- ✓ Local Control/Governance
- ✓ Local Economic Benefits
- ✓ Start-Up Costs
- ✓ Level of Effort
- ✓ Program Risks
- ✓ Timing

Features & Trade Offs of CCE Options



PROGRAM	FEATURES	TRADE-OFFS
MCE	<ul style="list-style-type: none"> Established CCE program with positive operating track record Five CCCo cities already members Shortest time to service commencement 	<ul style="list-style-type: none"> Formative program decisions already made Large service territory and Board; meets in San Rafael
EBCE	<ul style="list-style-type: none"> Ability to get in on “ground floor” and influence programs and policies East Bay regional ‘alignment’ and history of cooperation Designing business plan for local renewable development 	<ul style="list-style-type: none"> Longer runway to customer enrollment New program; lots of work to be done with many program elements unknown
New CCCo CCA	<ul style="list-style-type: none"> Greatest local control Policy, revenue and program autonomy Sole focus on CCCo 	<ul style="list-style-type: none"> Time and cost to form a new program Would not serve the whole County

BOARD VOTING SHARES



	MCE	EBCE (Simple)	EBCE (Weighted) ¹
Contra Costa already in MCE ²	14%	n/a	n/a
Contra Costa not yet in MCE ³	47%	56%	36%
Contra Costa Total	61%	56%	36%
Non-Contra Costa Communities	39%	44%	64%
Largest Community (share)	CC Unincorp. (8.1%)	All equal	Oakland (17.5%)
Unincorporated CC County Share	8.1%	All equal	9.0%

1. Standard EBCE voting is based on simple, one community, one vote. A weighted vote occurs only if three communities request it, and can only reverse an affirmative vote.
2. El Cerrito, Lafayette, Richmond, San Pablo, and Walnut Creek.
3. Assumes that all non-MCE Contra Costa communities join the CCE with 15% opt-out.

Remaining with PG&E



Benefits/Pros	Risks/Cons
Experienced provider	Higher GHG emissions; lower renewable content
Continuity- same firm provides all services	Less local renewable power generation
No action needed by City/County—status quo	Higher electricity rates than CCE rates under most scenarios
May be able to join a CCE at a later date (but perhaps at some cost)	No local control/local accountability
Individuals can remain on bundled PG&E service even if their community is a CCE member	No local input into policies and programs

Terms of Membership for MCE and EBCE



Terms	MCE	EBCE	Notes
Cost to Join	None	None	Both programs request local staff rep to assist with program coordination/outreach
Steps to Join	Adopt ordinance and JPA resolution	Adopt ordinance and JPA resolution	
Board Representation	1 seat per member agency or may choose a consolidated seat; Unincorporated County would represent 8.1% of weighted vote and be the largest member.	1 seat per member; Unincorporated county would represent 9.0 % of the weighted vote (if weighted vote is called) and would be the third-largest member.	MCE Board meets in San Rafael EBCE Board meets in Hayward
Est. Customer Enrollment	Late 2017	Spring/Summer 2018	
Decision Deadline	May 31, 2017	June 30, 2017	County may request one month extension to MCE

Steps for CCE Program Membership



- Membership Process for MCE or EBCE:
 - No Charge to Join
 - Adopt Resolution and Ordinance
 - Required Steps Completed by June 30, 2017
 - Board may wish to request extension from MCE
 - Board Direction needed by early May

Upcoming Meetings



- Upcoming City Council Presentations:
 - Brentwood – March 28
 - Danville – April 11
 - Moraga – April 12
 - Martinez – April 19
 - San Ramon – April 25

Next Steps



- Hear Presentations from MCE and EBCE
- Receive Public Testimony
- Determine if Board has any informational requests from MCE or EBCE
- Request time extension from MCE to June 30
- Set May 2 for continuation of this item

Questions/Comments



Visit www.cccounty.us/cce

Contact Information:

Jason Crapo, Deputy Director

Dept. of Conservation and Development

(925) 674-7722

Jason.Crapo@dcd.cccounty.us