

# DIABLO MX RANCH MOTOCROSS PARK

## APPEAL OF COUNTY FILES

LP13-2095

LP15-2040

Applicants: JOHN & LORI RAMIREZ

Owners: JAMES & DOROTHY SCHMIDT

Appellant: Law Office of David Trotter

November 15, 2016

# DIABLO MX RANCH



APN: 003-020-048

Camino Diablo

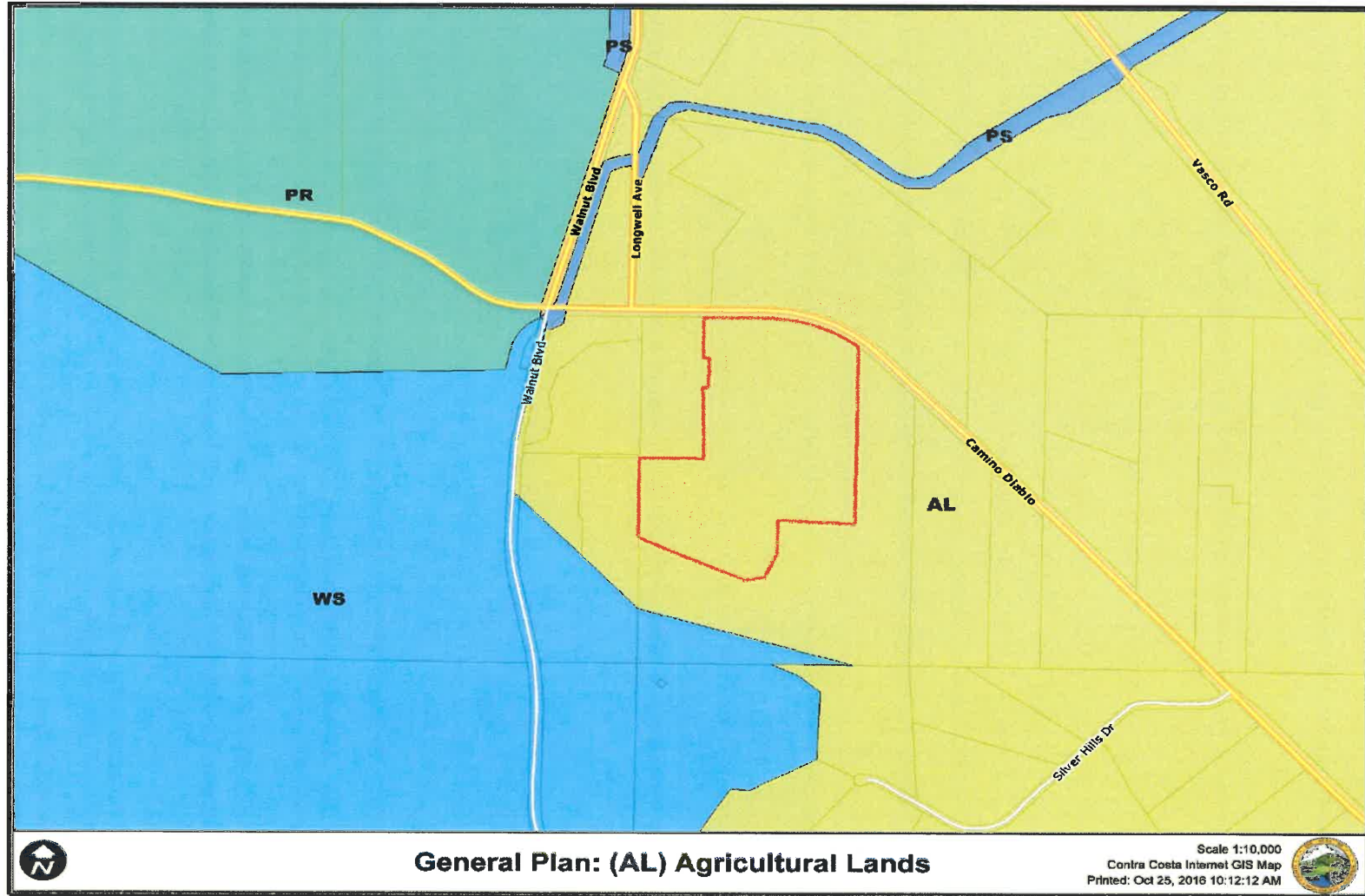


Map Created 10/25/2018  
by Contra Costa County Department of  
Conservation and Development, GIS Group  
30 Muir Road, Martinez, CA 94553  
37.59 41.791N 122.07.03 756W

This map was created by the Contra Costa County Department of Conservation and Development with data from the Contra Costa County GIS Program. Some base data, primarily City Limits, is derived from the CA State Board of Equalization's tax rate areas. While obligated to use this data the County assumes no responsibility for its accuracy. This map contains copyrighted information and may not be copied, reproduced in its current state if the source is cited. Users of this map agree to read and accept the County of Contra Costa disclaimer of liability for geographic information.

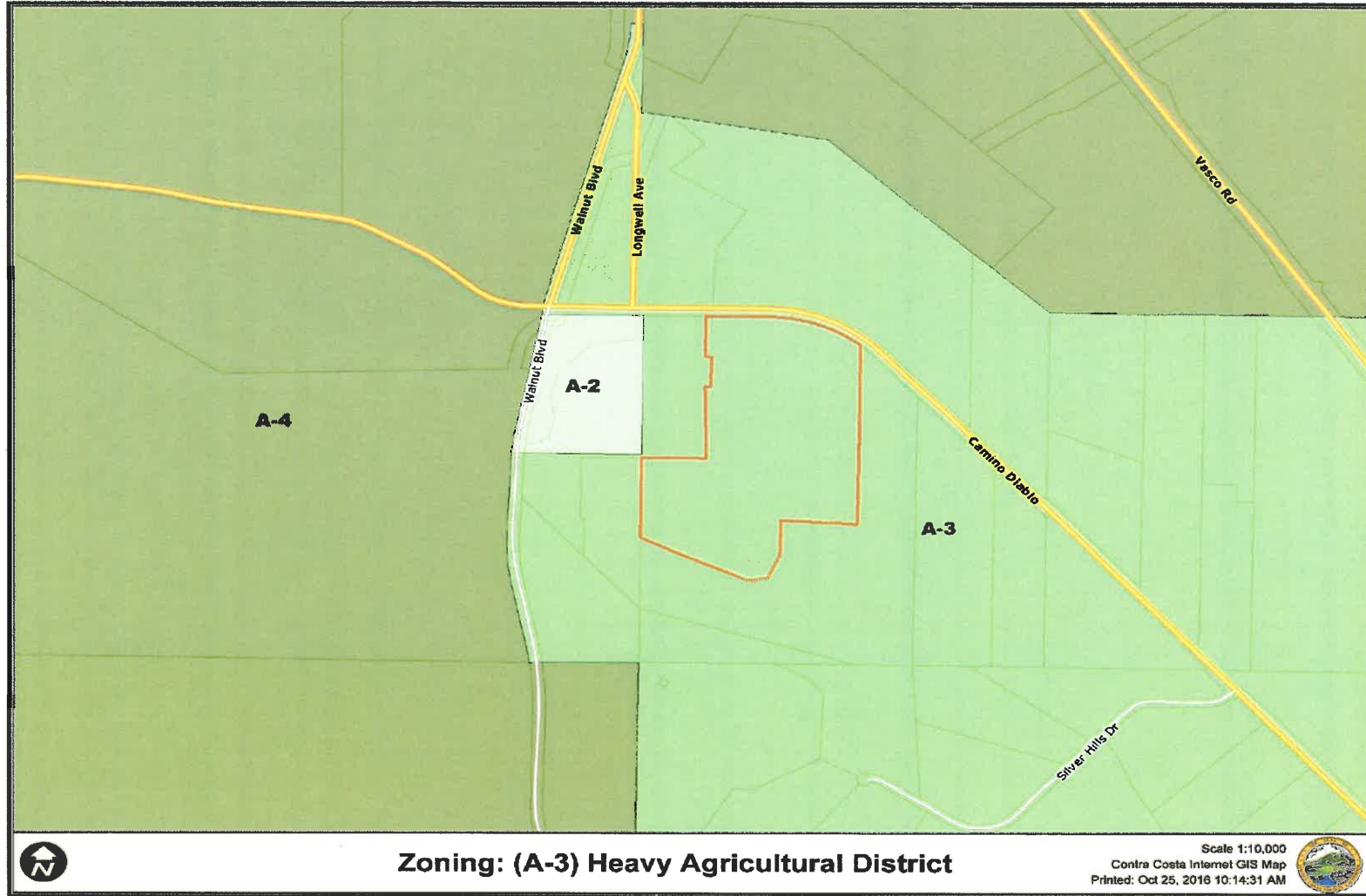


# GENERAL PLAN Agricultural Lands (AL)



# ZONING

## Heavy Agricultural District (A-3)



## THE REASON FOR THIS HEARING:

- The most recent 5-year compliance review was applied for on August 7, 2013 and was approved by the Zoning Administrator on December 15, 2014. (DECISION APPEALED to CPC)
- The appeal of Compliance Review #LP13-2095 was heard by the Planning Commission on May 12, 2015. The Commission upheld the Zoning Administrator's decision and approved the compliance review. (DECISION APPEALED to Board of Supervisors)
- Prior to an appeal hearing before the Board, the applicants submitted an application to modify the conditions of approval, which requires a new application.
- LP15-2040 was approved by the Planning Commission on July 26, 2015. (DECISION APPEALED to Board of Supervisors)

# 50 CAMINO DIABLO ROAD, BRENTWOOD



0 250 500 1,000 Feet

Map Created 10/25/2016  
by Contra Costa County Department of  
Conservation and Development, GIS Group  
30 Muir Road, Martinez, CA 94553  
37.59 41.791N 122.07.03 756W

This map was created by the Contra Costa County Department of Conservation and Development with data from the Contra Costa County GIS Program. Some base data, primarily City Limits, is derived from the CA State Board of Equalization's tax rate areas. While obligated to use this data the County assumes no responsibility for its accuracy. This map contains copyrighted information and may not be altered. It may be reproduced in its current state if the source is cited. Users of this map agree to read and accept the County of Contra Costa disclaimer of liability for geographic information.

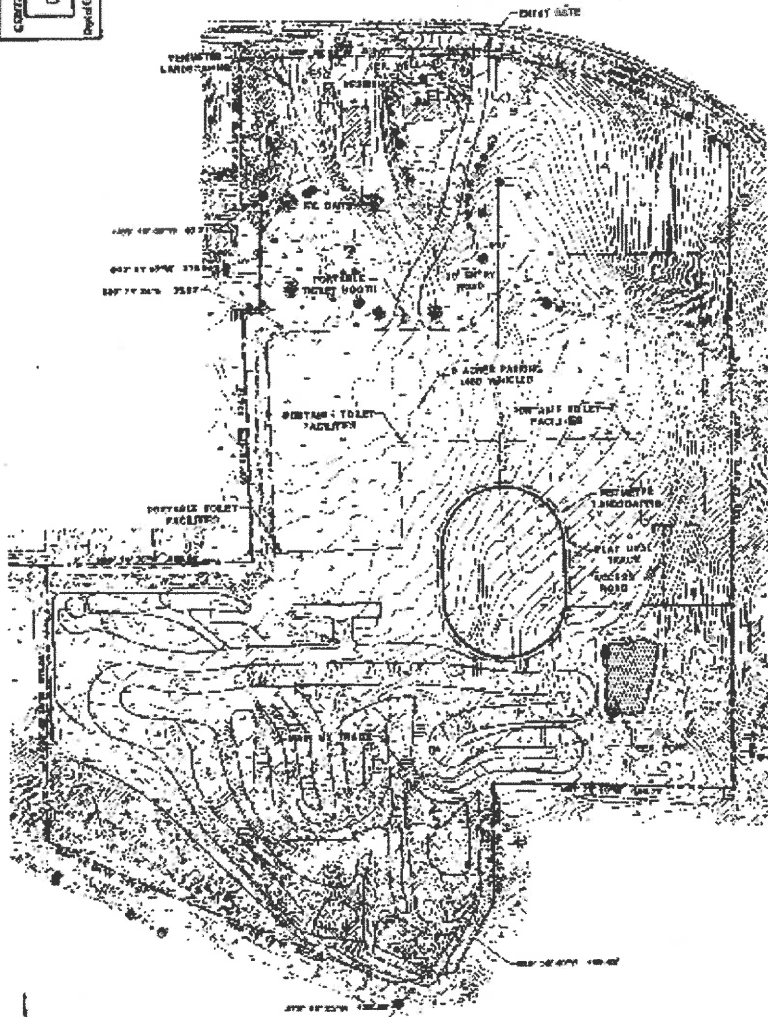


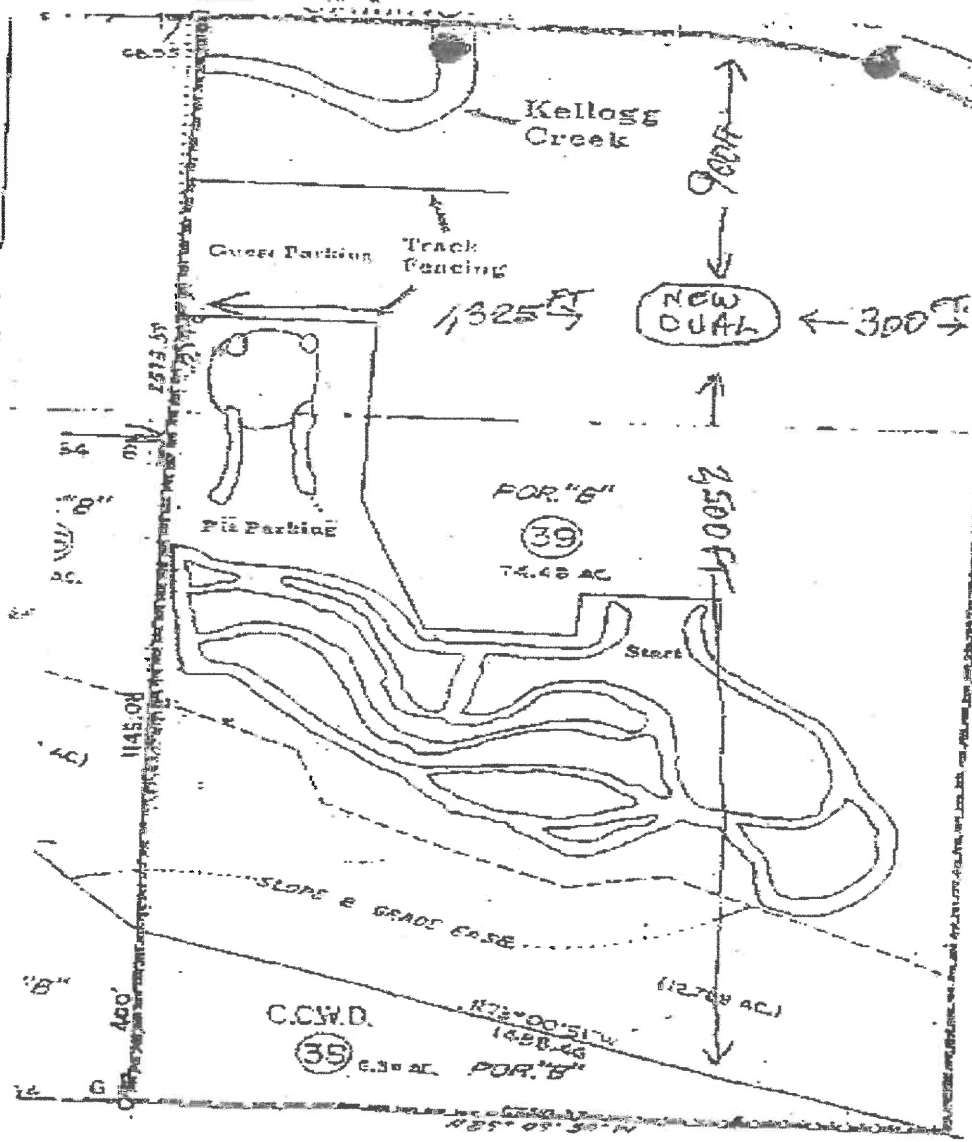
PROPOSED SITE PLAN  
**50 CAMINO DIABLO ROAD**

DIABLO MK RANCH LLC  
BRENTWOOD CALIFORNIA

NOTES: 1-1

CONTRACT NO. 13-0000000000  
OCT 08 2015  
Page of Construction & Erection





Detailed  
Plan  
LP 951010  
36 OCT 21 PM 12:34  
SARAH ROSE  
DEVELOPMENT DEPT  
CORPORA USPTA