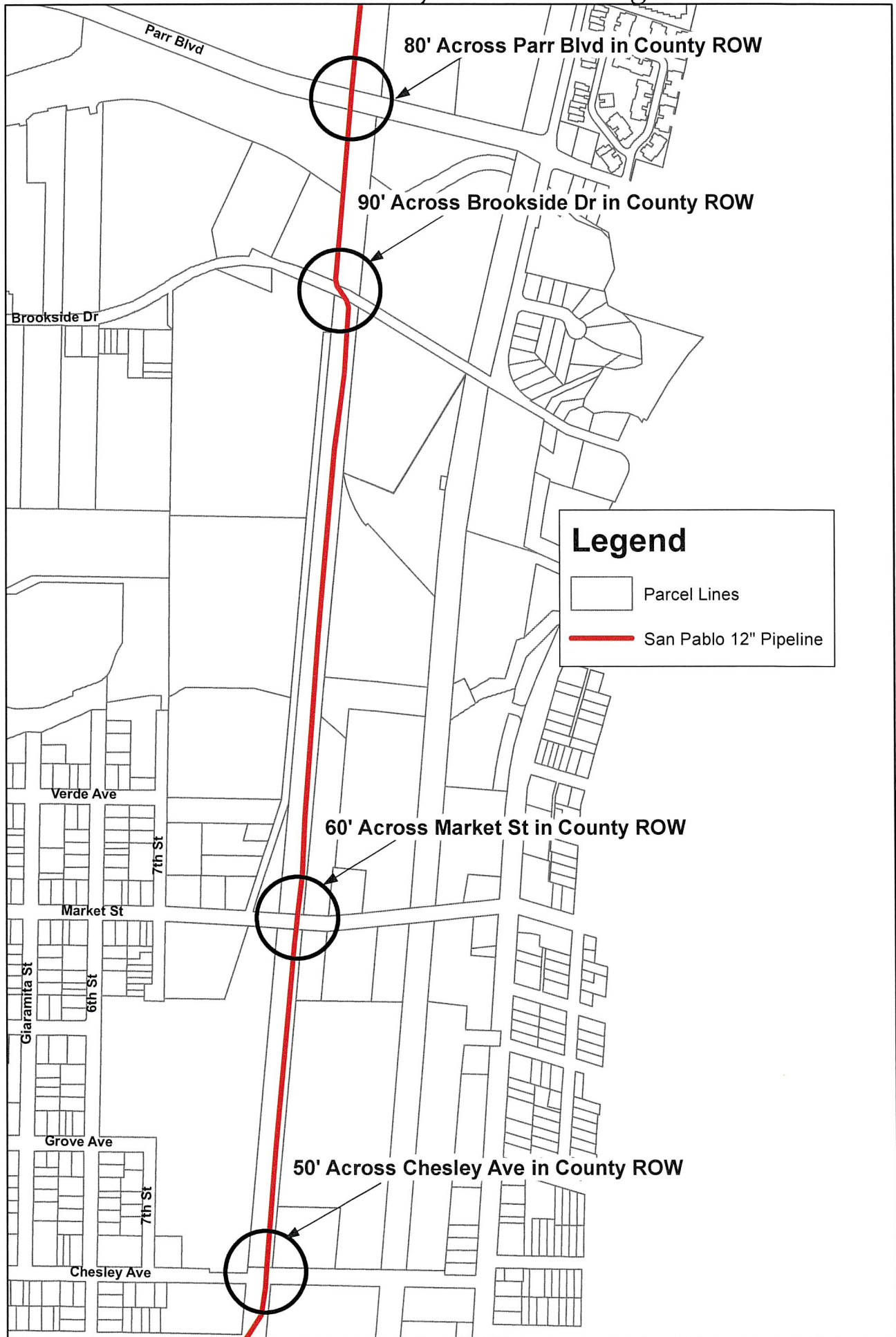
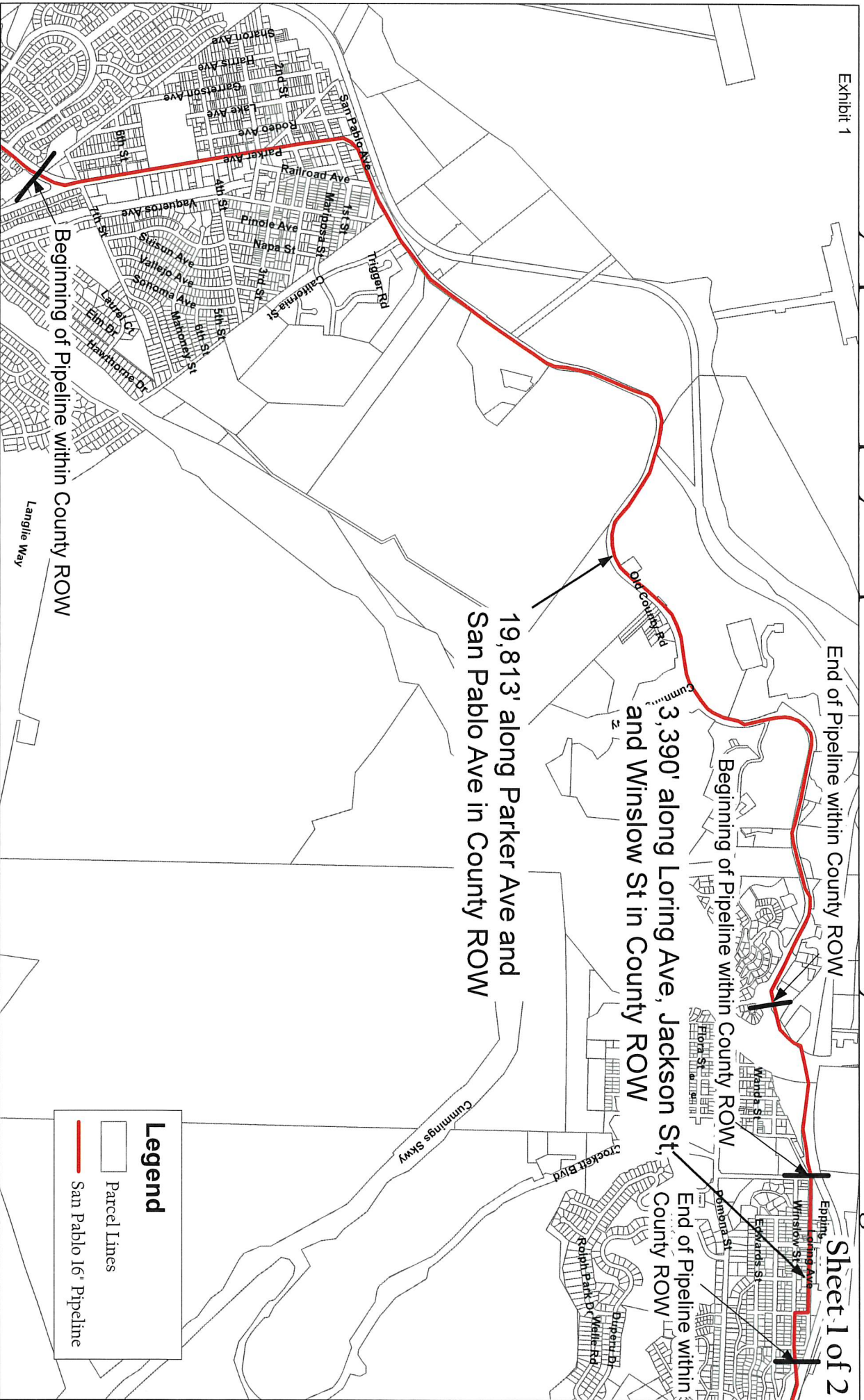


San Pablo Bay Pipeline Company 12" Pipeline Contra Costa County ROW Crossing Locations



San Pablo Bay Pipeline Company 16" Pipeline - Contra Costa County ROW Crossing Locations

Exhibit 1

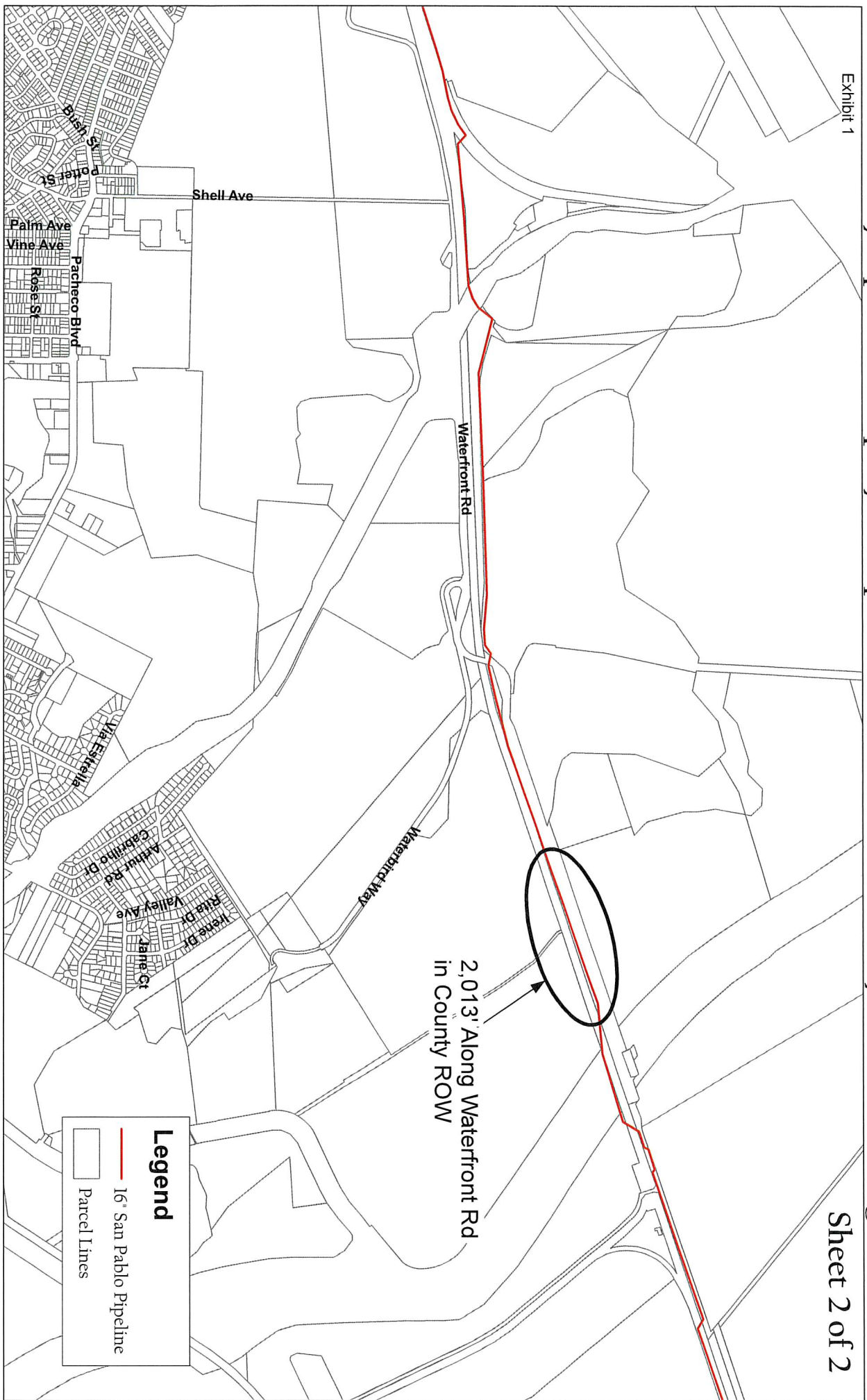


Sheet 1 of 2

San Pablo Bay Pipeline Company 16" Pipeline - Contra Costa County ROW Crossing Locations

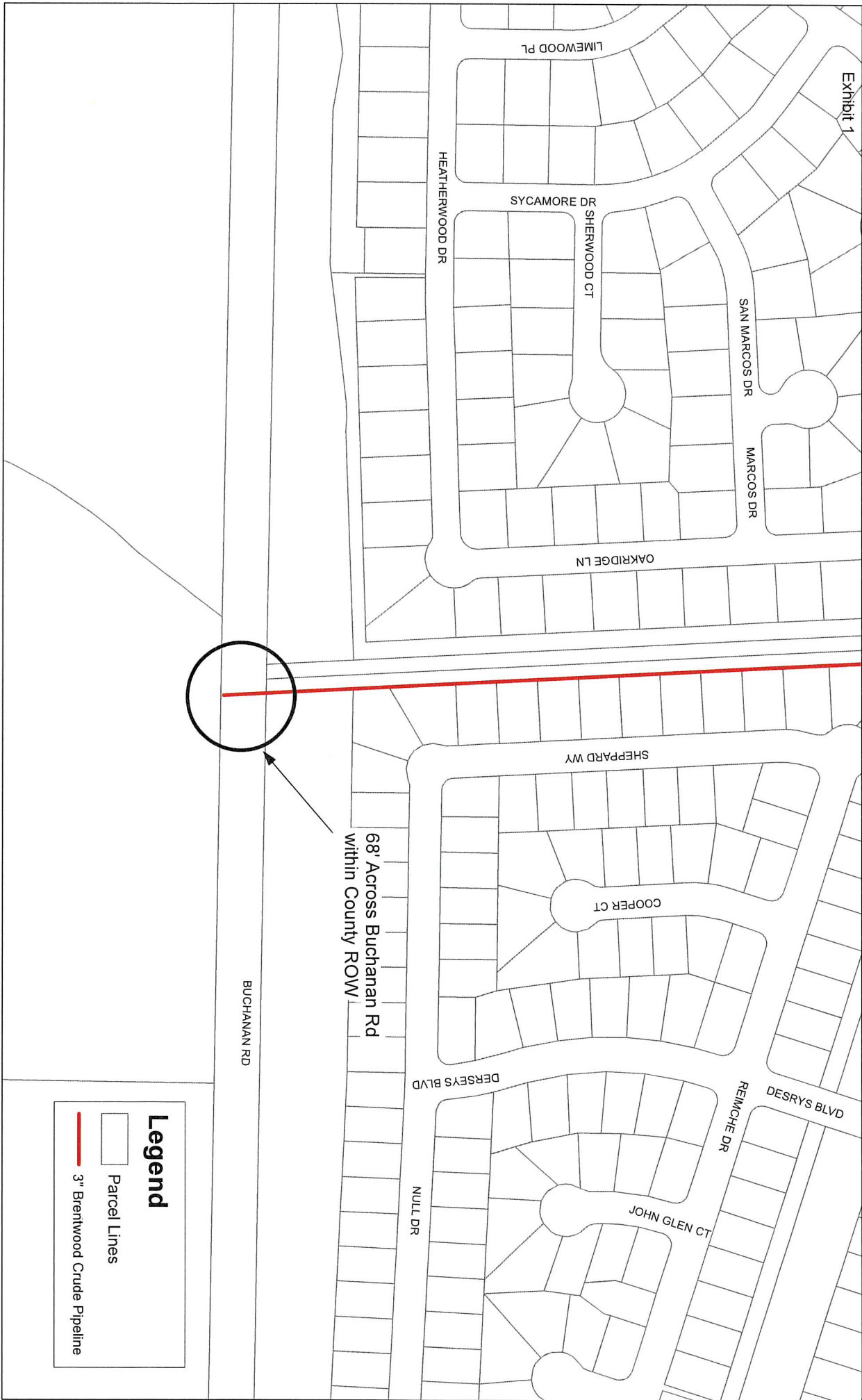
Exhibit 1

Sheet 2 of 2



San Pablo Bay Pipeline Company 3" Pipeline - Contra Costa County ROW Crossing Locations

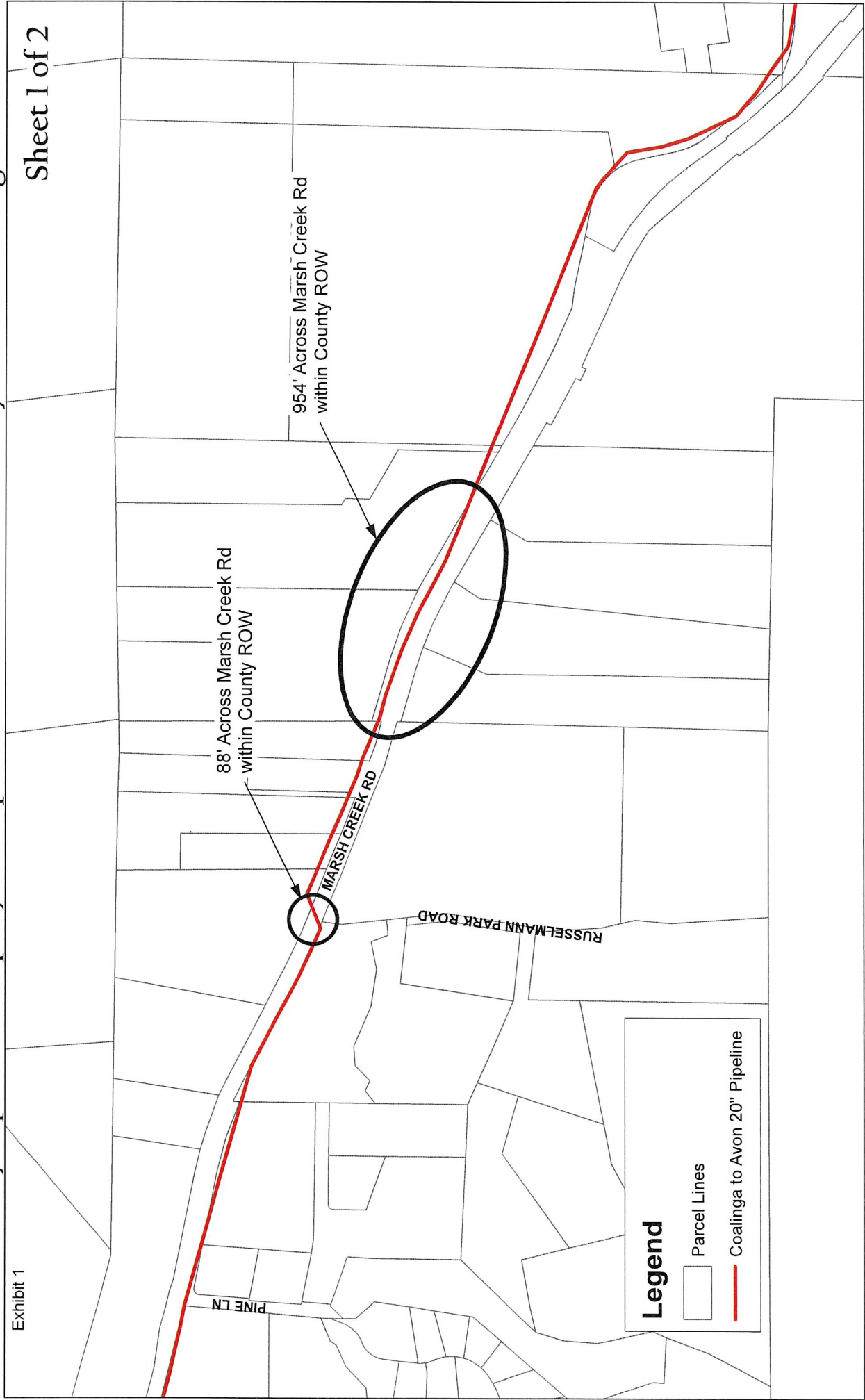
Exhibit 1



San Pablo Bay Pipeline Company 20" Pipeline - Contra Costa County ROW Crossing Locations

Exhibit 1

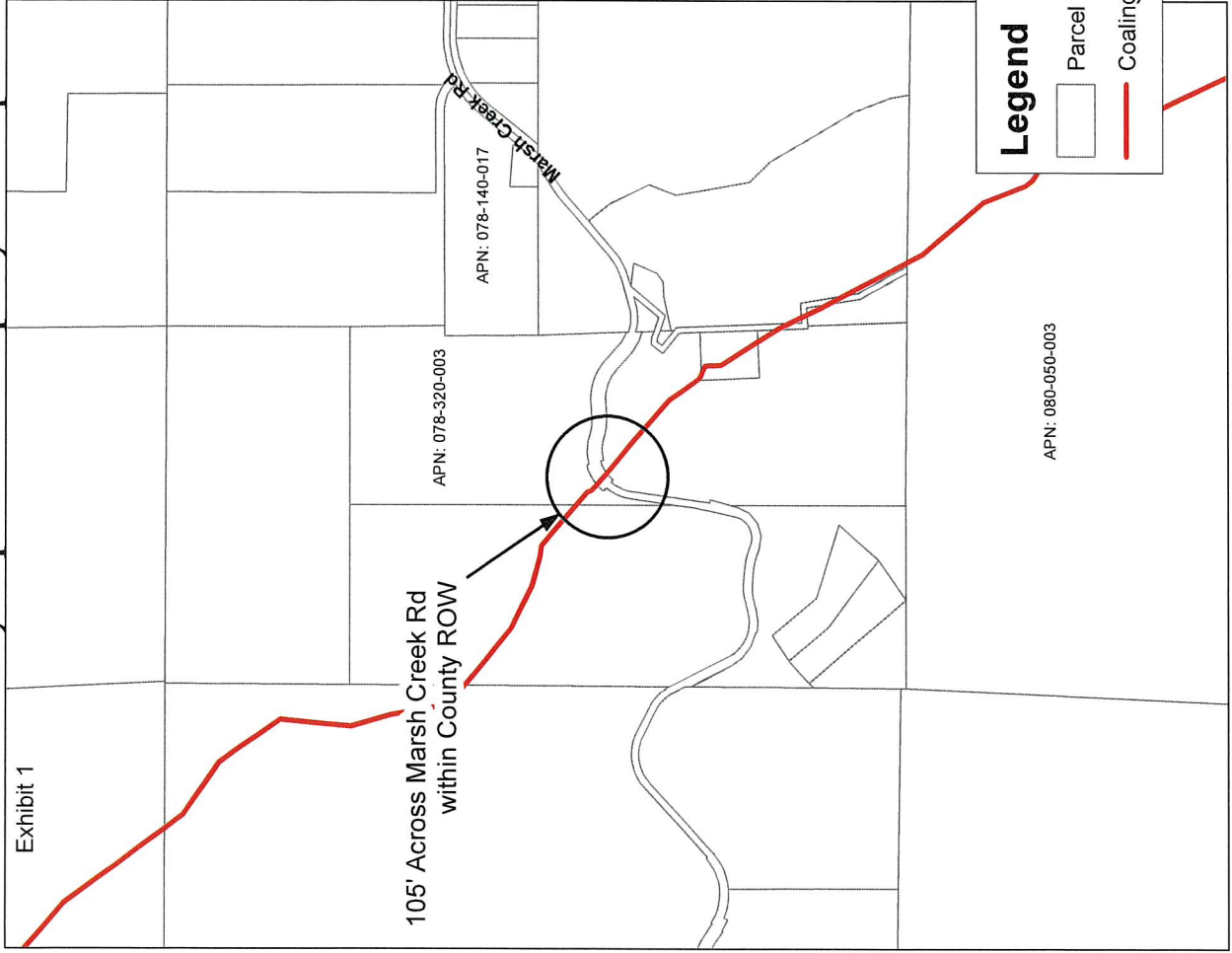
Sheet 1 of 2



San Pablo Bay Pipeline Company 20" Pipeline - Contra Costa County ROW Crossing Locations

Exhibit 1

Sheet 2 of 2



105' Across Marsh Creek Rd
within County ROW

APN: 078-320-003

APN: 078-140-017

APN: 005-170-006

APN: 005-170-012

APN: 005-180-007

APN: 080-050-003

Legend

Parcel Lines

Coalinga to Avon 20" Pipeline