

Appendix D: Area of Benefit Maps and Project Lists

HOW DOES THE AREA OF BENEFIT PROGRAM FIT INTO THE CRIPP?

As explained in the CRIPP Introduction and Background section, the CRIPP is a planning document for known potential projects in the next 7 years.

The Area of Benefit Program (AOB) is just one potential funding source for County road projects. Some of these road improvement projects are funded by AOB revenues, provided those projects are on the approved AOB project list.

Not all projects on the AOB project lists will appear in the CRIPP. Some of the projects on the AOB project lists fall outside of the 7 year planning window and therefore are not included in the CRIPP project lists.

Each AOB project list was approved with each respective AOB ordinance. In order to update an AOB project list, a separate update process will need to occur. Projects within each AOB program may be removed or added when each AOB ordinance is updated and adopted by the Board of Supervisors. The update of a CRIPP is not the process in which the County updates an AOB.

For reference, the following information for each adopted Area of Benefit is included:

- Ordinance number
- Approved/Proposed Project List
- Boundary for the Area of Benefit

The AOB program is constantly being updated. The updates include revising the AOB project list. At the time of the CRIPP development, several AOB programs were in the process of being updated. The draft proposed project lists for these AOB programs are presented in the 2015 CRIPP. These proposed project lists are in draft form and have not yet been finalized or adopted by the Board of Supervisors.

For more information about the Areas of Benefit, contact Mary Halle at (925) 313-2000.

DRAFT

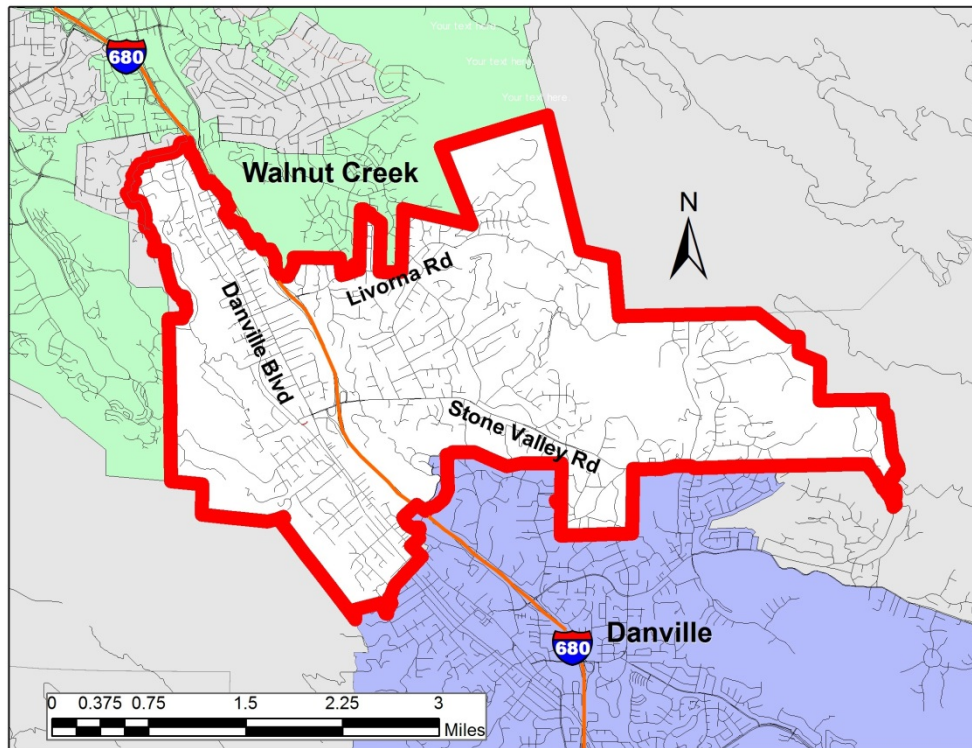
Alamo Regional Area of Benefit
Proposed Project List Schedule
 Pending Alamo AOB update expected in 2016.

DRAFT

Item	Location	Description	Project Status
1	Downtown Alamo	Construct pedestrian safety improvements.	Incomplete
2	Stone Valley Road from Stone Valley Way to High Eagle Road	Widen to accommodate 2 travel lanes and shoulders	Complete
3	Stone Valley Road from High Eagle Road to Roundhill Road	Widen to accommodate 2 travel lanes and shoulders and a left turn lane at Roundhill Road	Complete
4	Stone Valley Road from Roundhill Road to Glenwood Court	Widen to accommodate 2 travel lanes and shoulders	Complete
5	Livorna Road, Stone Valley Road, and Danville Boulevard	Construct pedestrian and bicycle improvements.	Incomplete
6	Alamo Schools	Construct pedestrian safety improvements at Stone Valley Middle School, Alamo Elementary School, and Rancho Romero Schools.	Incomplete
7	Miranda Avenue from Stone Valley Road to Stone Valley Middle School	Construct pedestrian and bicycle improvements.	Incomplete
8	Danville Boulevard at Hemme Avenue	Intersection improvements.	Incomplete

Check AOB fees at <http://www.cccounty.us/AOB>

Alamo Area of Benefit Boundary

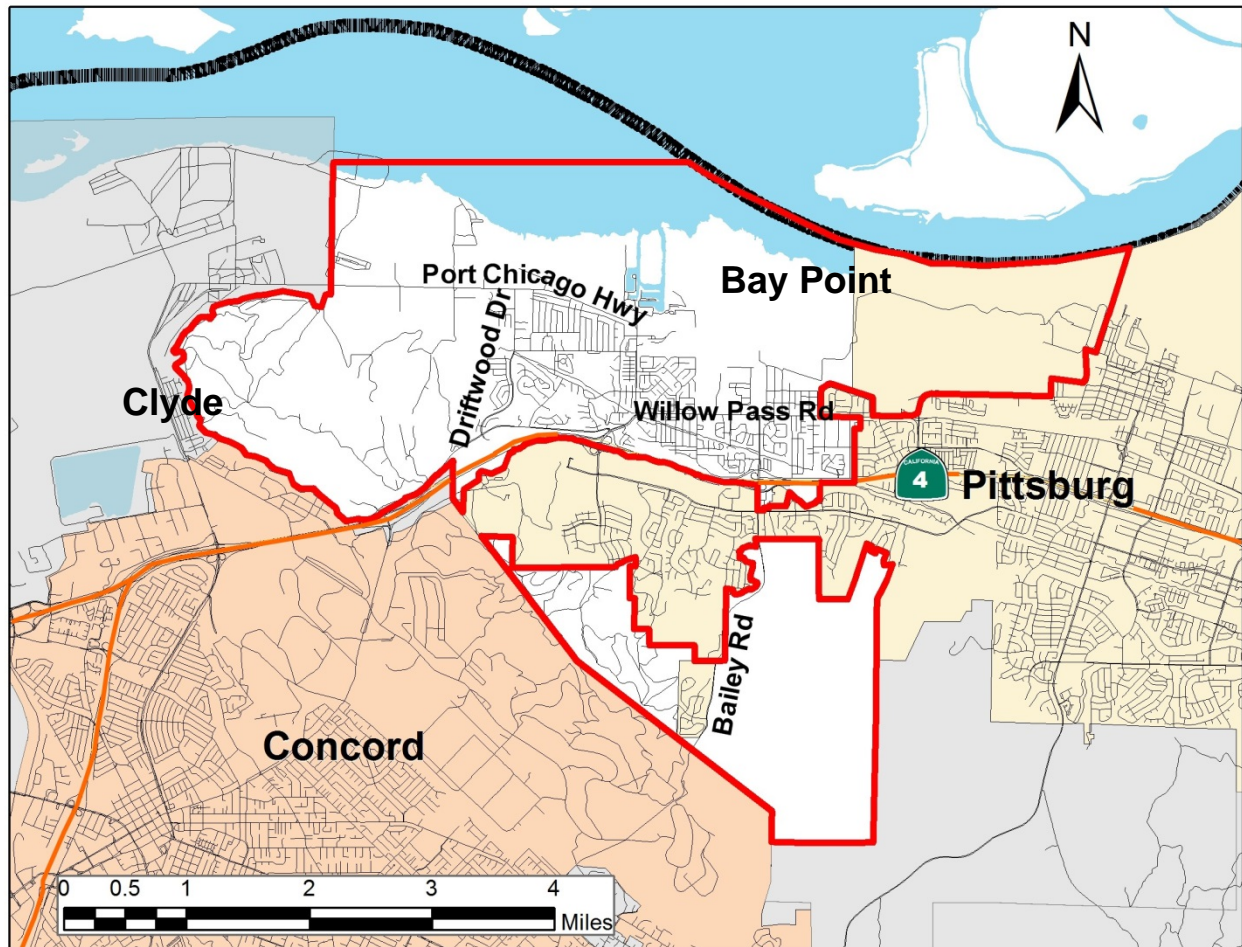


Bay Point Area of Benefit
Proposed Project List Schedule
 Pending Bay Point AOB update expected in 2016.

Item	Location	Description	Project Status
1	Willow Pass Road	Signalize EB and WB off-ramps at west interchange of SR4	Incomplete
2	Willow Pass Road	Intersection improvements at Willow Pass Road and Evora Road to facilitate traffic flow to WB SR 4.	Incomplete
3	Willow Pass Road	Restriping from Bailey Road to Pittsburg City Limits to improve capacity.	Incomplete
4	Willow Pass Road	Bailey Road intersection improvements.	Incomplete
5	Port Chicago Highway	Widen to accommodate bicycle and pedestrian improvements from Driftwood Drive to west of McAvoy Road.	Incomplete
6	Port Chicago Highway	Realign from west of McAvoy Road to Skipper Road.	Incomplete
7	Port Chicago Highway & Willow Pass Rd Intersection	Construct multi-modal safety improvements through intersection from Lynbrook Drive to Weldon Street.	Incomplete
8	Driftwood Drive	Construct pedestrian and bicycle safety improvements from Port Chicago Highway to Alves Lane extension.	Incomplete
9	Pacifica Avenue	Extend roadway from Port Chicago Highway to Alves Lane extension.	Incomplete
10	Alves Lane	Extend roadway from Willow Pass Road to Pacifica Avenue extension.	Incomplete
11	Bailey Road	Bicycle and pedestrian improvements from Willow Pass Road to Canal Road.	Incomplete
12	Bailey Road	Bicycle and pedestrian improvements from Canal Road to BART.	Incomplete
13	Loftus Road	Construct bicycle and pedestrian safety improvements from Canal Road to Willow Pass Road.	Incomplete

Check AOB fees at <http://www.cccounty.us/AOB>

Bay Point Area of Benefit Boundary



DRAFT

Bethel Island Area of Benefit

Proposed Project List Schedule

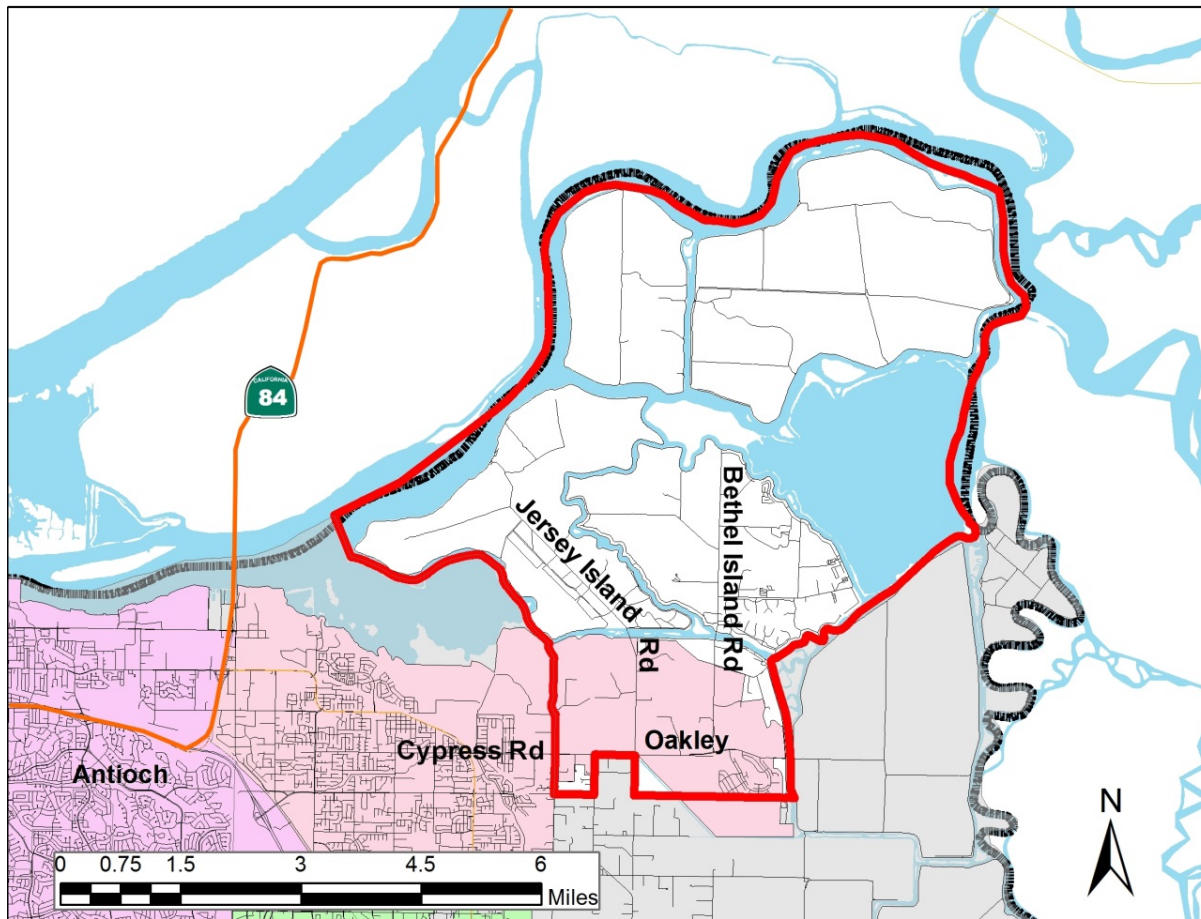
Pending Bethel Island AOB update expected in 2016.

DRAFT

Item	Location	Description	Project Status
1	Bethel Island Rd.	Add bicycle and pedestrian improvements from Wells Rd to Sandmound Blvd.	Incomplete
2	Sandmound Blvd.	Add bicycle and pedestrian improvements from Oakley City Limits to Mariner Rd.	Incomplete
3	Sandmound Blvd.	Add bicycle and pedestrian improvements from Mariner Rd to Cypress Rd.	Incomplete
4	Gateway Rd.	Add bicycle and pedestrian improvements from Bethel Island Rd to Piper Rd.	Incomplete
5	Piper Rd.	Add bicycle and pedestrian improvements from Gateway Rd to Willow Rd.	Incomplete

Check AOB fees at <http://www.cccounty.us/AOB>

Bethel Island Area of Benefit Boundary

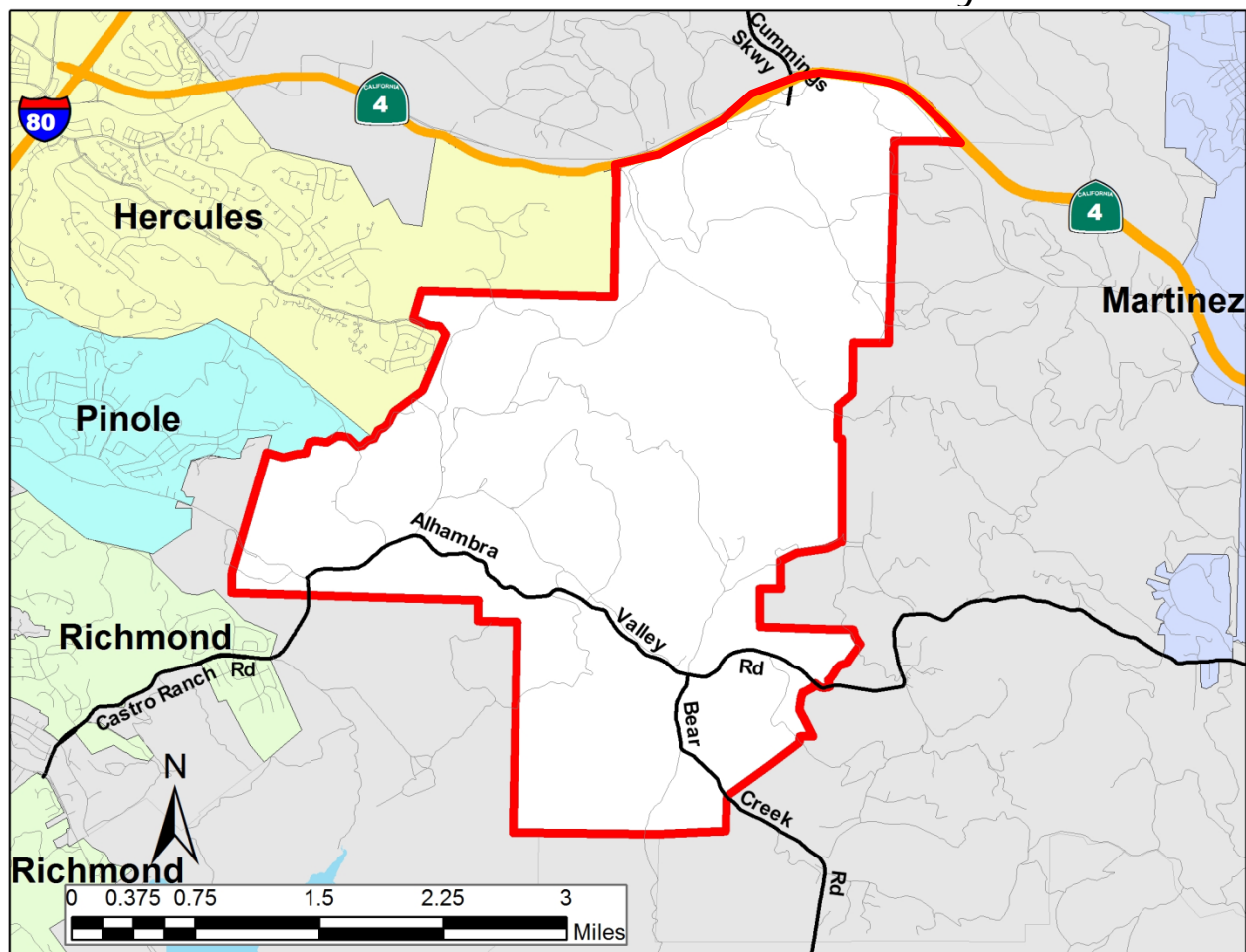


Briones Area of Benefit
Project List Schedule
Current Ordinance 88-27

Item	Location	Description	Project Status
1	Alhambra Valley Road	Realign curves at Ferndale Road (mile post 5.6), Main Road (mile post 6.2), and 4000 feet northwest of Bear Creek road (mile post 2.9)	Incomplete

Check AOB fees at <http://www.cccounty.us/AOB>

Briones Area of Benefit Boundary

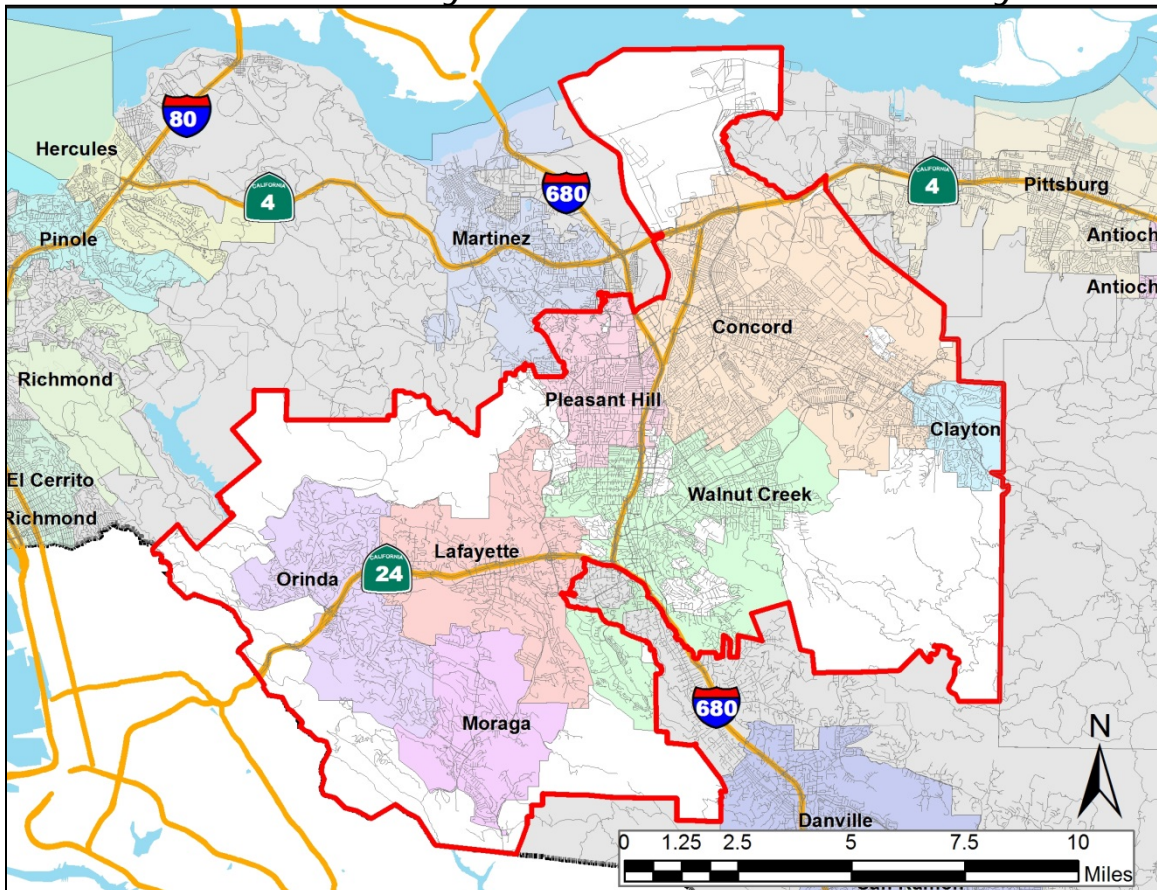


Central County Area of Benefit
Project List Schedule
Current Ordinance 95-32

Item	Location	Description	Project Status
1	Taylor Boulevard	Safety and capacity improvements from Pleasant Hill Road to Boyd Road	Incomplete
2	Pleasant Hill Road / Taylor Boulevard	Safety and Capacity improvements to existing intersection	Incomplete
3	Bailey Road	Remove and replace existing bridge. New bridge adequate for standard two-lane arterial	Complete
4	Rudgear Road / San Miguel Drive / Walnut Boulevard / Mountain View Boulevard	Safety Improvements	Incomplete
5	San Pablo Dam Road / Bear Creek Road	Construct Signal (County share)	Complete
6	Paso Nogal / Golf Club Road	Improve intersection	Complete
7	Evora Road Extension	Construct new road from Willow Pass Road (Concord) to Port Chicago Highway	Incomplete

Check AOB fees at <http://www.cccounty.us/AOB>

Central County Area of Benefit Boundary

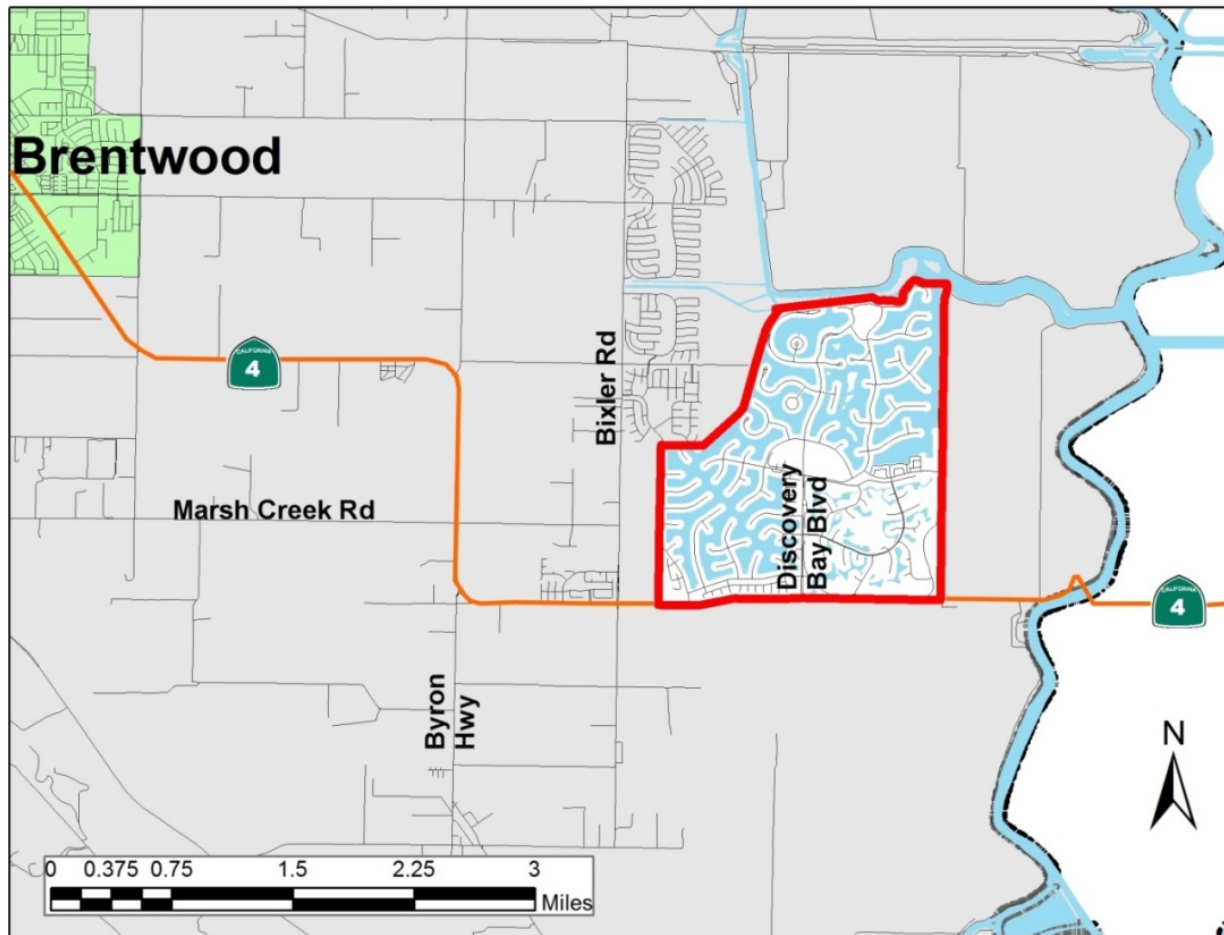


Discovery Bay Area of Benefit
Project List Schedule
Current Ordinance 97-27

Item	Location	Description	Project Status
1	Byron Hwy	Construction of Improvements at Byron Elementary School	Incomplete
2	Byron Hwy at SR4 (Phase 1)	Construct signal and interim intersection improvements	Complete
3	Byron Hwy at SR4 (Phase 2)	Construction of ultimate intersection improvements	Incomplete

Check AOB fees at <http://www.cccounty.us/AOB>

Discovery Bay Area of Benefit Boundary



East County Regional Area of Benefit
Project List Schedule
Current Ordinance 2013-26

Item	Location	Description	Project Status
1	Vasco Rd/Camino Diablo intersection	Construct intersection improvements.	Incomplete
2	Marsh Creek Rd	Construct safety improvements.	Incomplete
3	Chestnut Street	Widen roadway from Sellers Avenue to Byron Hwy.	Incomplete
4	Delta Road	Widen roadway from Byron Highway to Holland Tract Rd.	Incomplete
5	Knightesen Ave & Eden Plains Rd	Widen roadway from Delta Rd to Chestnut St.	Incomplete
6	Sunset Rd	Widen roadway from Sellers Ave to Byron Hwy.	Incomplete
7	Byron Highway	Widen roadway from Camino Diablo to the Alameda County Line.	Incomplete
8	Byron Highway	Construct two way left turn lane at Byron Elementary School.	Incomplete
9	SR 4/Byron Highway intersection	Widen southern intersection of Byron Highway with SR 4 (Phase 2).	Incomplete
10	Knightesen Avenue	Widen roadway from East Cypress Rd to Delta Rd.	Incomplete
11	Delta Road	Widen roadway from Sellers Ave to Byron Highway.	Incomplete
12	Sellers Avenue	Widen roadway from Delta Rd to Chestnut St.	Incomplete
13	Sellers Avenue	Widen roadway from Main canal to Marsh Creek Rd.	Incomplete
14	Byron Highway	Widen roadway from Delta Rd to Chestnut St.	Incomplete
15	Byron Highway	Widen roadway from Chestnut St to SR 4.	Incomplete
16	Byron Highway	Widen roadway from SR 4 to Camino Diablo.	Incomplete
17	Camino Diablo	Widen roadway from Vasco Rd to Byron Highway.	Incomplete
18	Knightesen Ave/Delta Rd intersection	Construct intersection improvements.	Incomplete
19	Byron Highway/Camino Diablo intersection	Construct intersection improvements.	Incomplete
20	Byron Highway/SR 4 /Point of Timber intersection	Construct intersection improvements.	Incomplete
21	Sellers Ave/Marsh Creek Rd intersection	Construct intersection improvements.	Incomplete
22	Balfour Rd/Byron Highway intersection	Construct intersection improvements.	Incomplete
23	Sellers Ave/Sunset Rd intersection	Construct intersection improvements.	Incomplete
24	Sellers Ave/Chestnut St intersection	Construct intersection improvements.	Incomplete
25	Sellers Ave/Balfour Rd intersection	Construct intersection improvements.	Incomplete

Check AOB fees at <http://www.cccounty.us/AOB>

East County Regional Area of Benefit Boundary

