

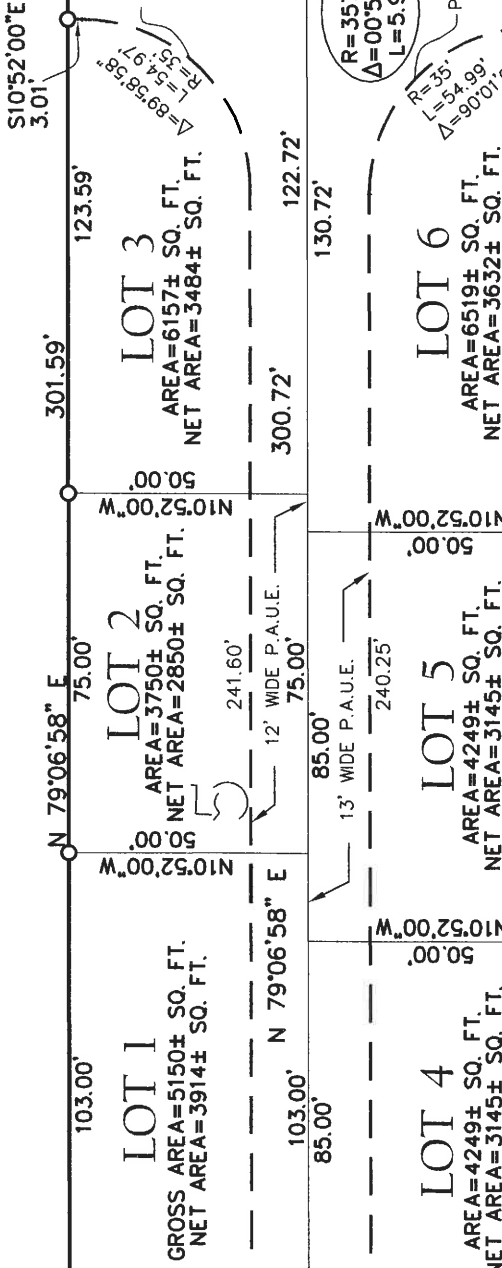
EXHIBIT B

FOURTH STREET (60' WIDE)

PARKER AVENUE (85' WIDE)

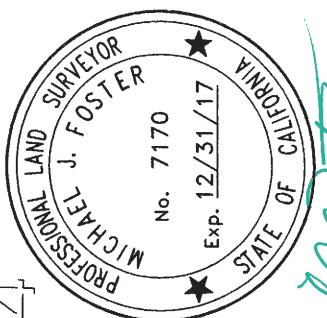
OFFICIAL MAP OF AMENDED MAP NO. 2 OF BLOCK 'A', AND
 AMENDED MAP OF BLOCKS 'B' & '36E' TOWN OF RODEO
 (1 OM 1)

NUNN
 (2007-014201)



FAKURNEJAD
 (2007-0201369)

FAKURNEJAD
 (2004-0293974)



MICHAEL J. FOSTER, L.S. 7170
 DATE: APRIL 10, 2016

400.00' NLY FROM THE SLY LINE OF
 BLOCK 'B', AS SHOWN ON MAP OF
 TOWN OF RODEO (DM 91)

LEGEND	
	FOUND STANDARD STREET MONUMENT
	FOUND RAILROAD SPIKE
	FOUND IRON PIPE
	SET STANDARD STREET MONUMENT, STAMPED, L.S. 7170
	SET 5/8-INCH REBAR & CAP, L.S. 7170
	RECORD DATA
	RELINQUISHED ABUTTER'S RIGHTS
	IRON PIPE
	RAILROAD SPIKE
	RRS
	SFNF SEARCHED FOR NOT FOUND
	P.A.U.E. PRIVATE ACCESS & UTILITY EASEMENT

PLAT MAP OF SUBDIVISION 9367

BEING REAL PROPERTY DESCRIBED IN THE DEED
 RECORDED JULY 16, 2013 AS DOCUMENT
 2013-0178388, ALSO BEING A PORTION OF LOT 5, BLOCK B, OF
 "OFFICIAL MAP OF AMENDED MAP NO. 2 OF BLOCK 'A' AND
 AMENDED MAP OF BLOCKS 'B' & '36E', TOWN OF RODEO" (1 OM 1)
 RODEO, CONTRA COSTA COUNTY, CALIFORNIA
 APRIL, 2016 SCALE: 1" = 40'

BAY AREA LAND SURVEYING INC.
 961 MITCHELL WAY
 EL SOBRANTE, CA 94803
 (510) 223-5167