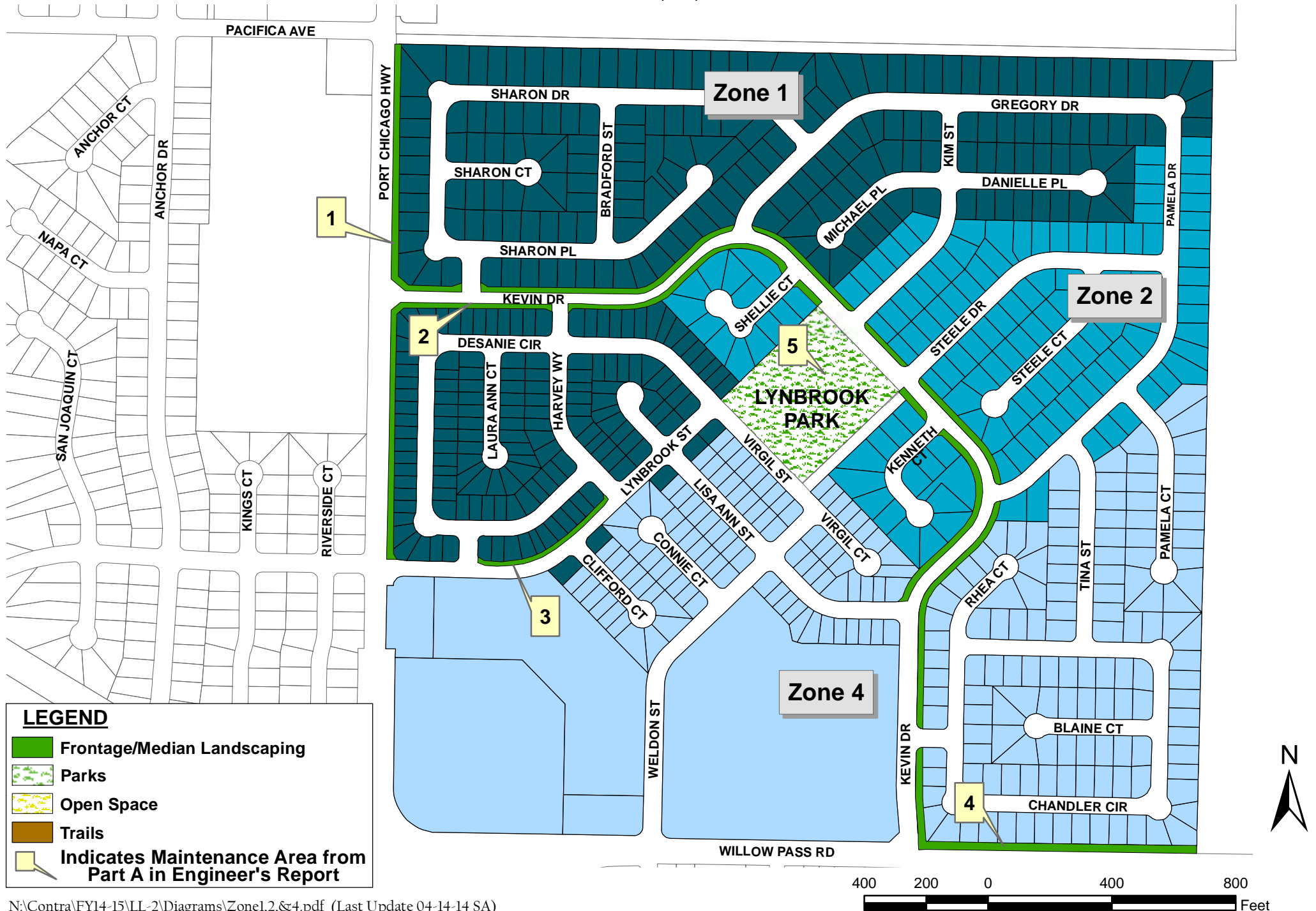
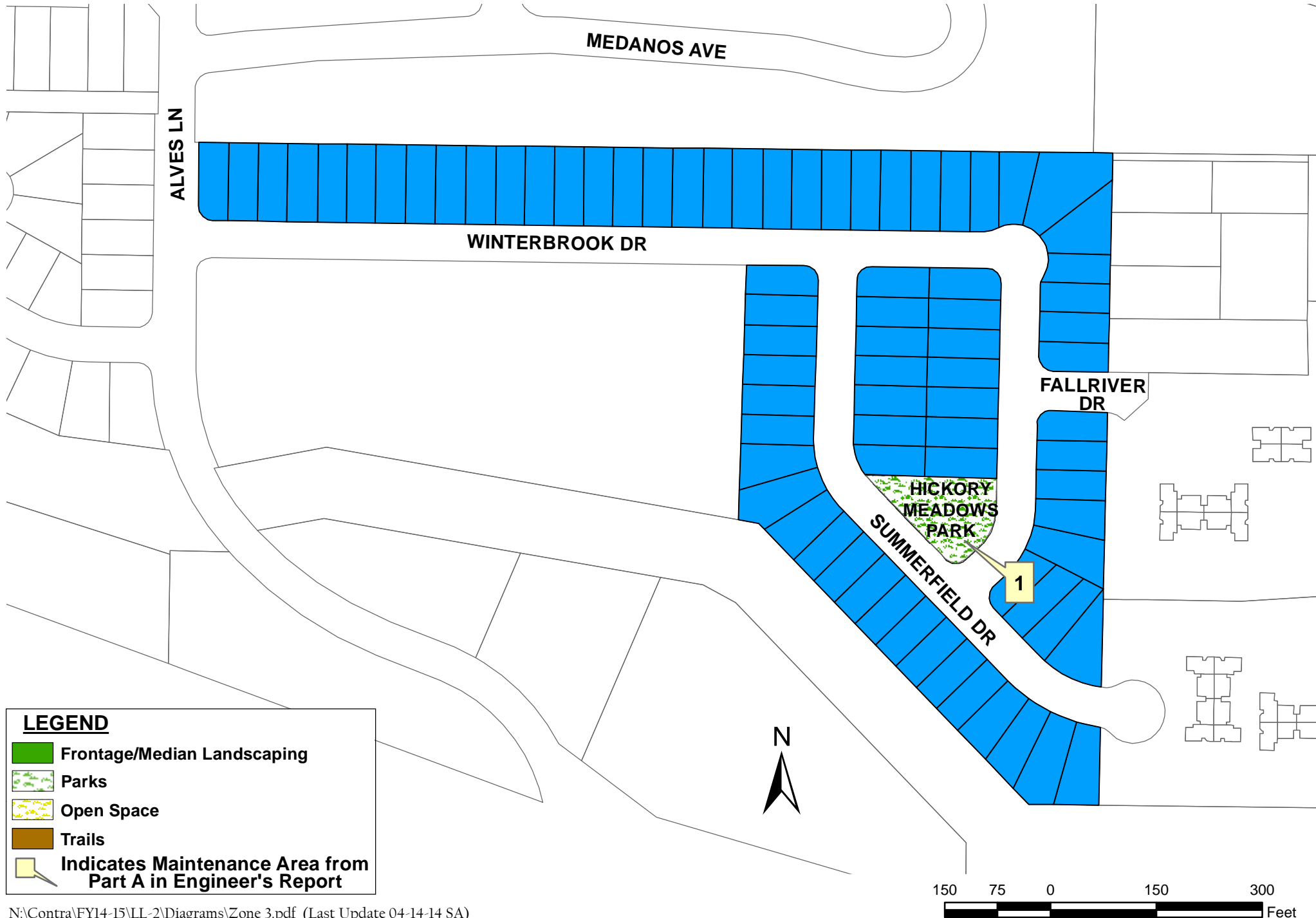


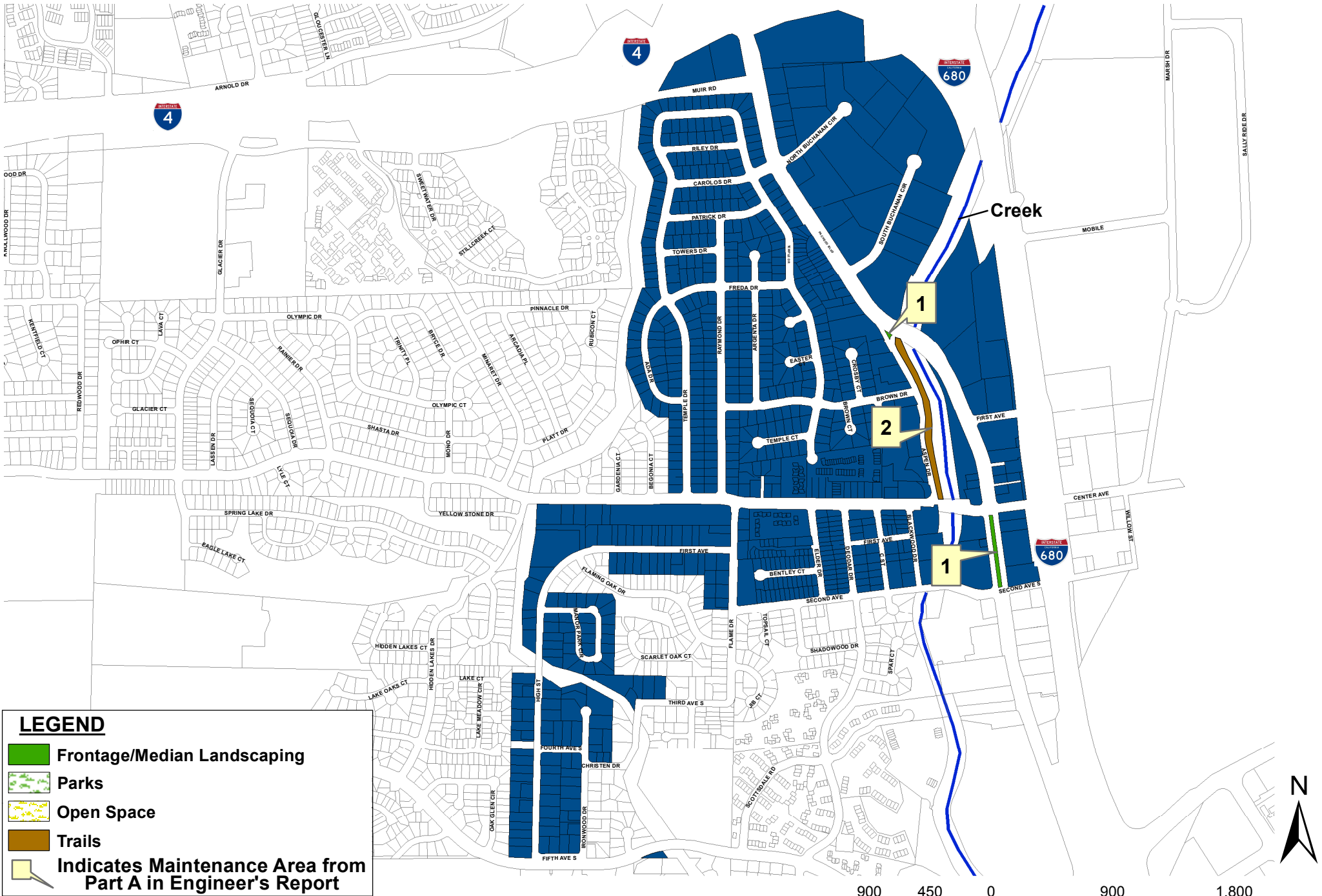
Assessment Diagram Contra Costa County LL-2 Zones 1, 2, & 4



Assessment Diagram Contra Costa County LL-2 Zone 3



Assessment Diagram Contra Costa County LL-2 Zone 5

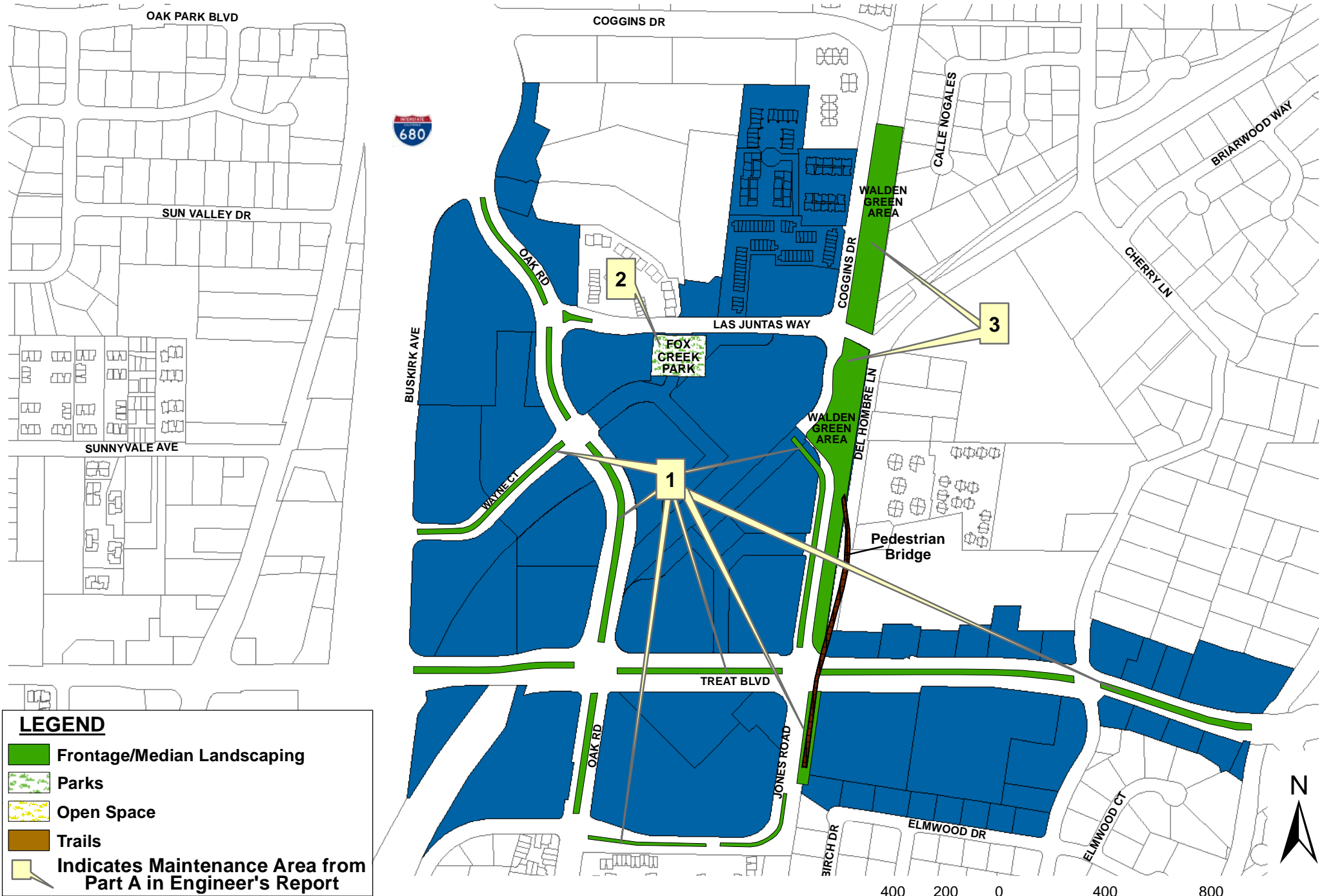


LEGEND

- Frontage/Median Landscaping
- Parks
- Open Space
- Trails
- Indicates Maintenance Area from Part A in Engineer's Report



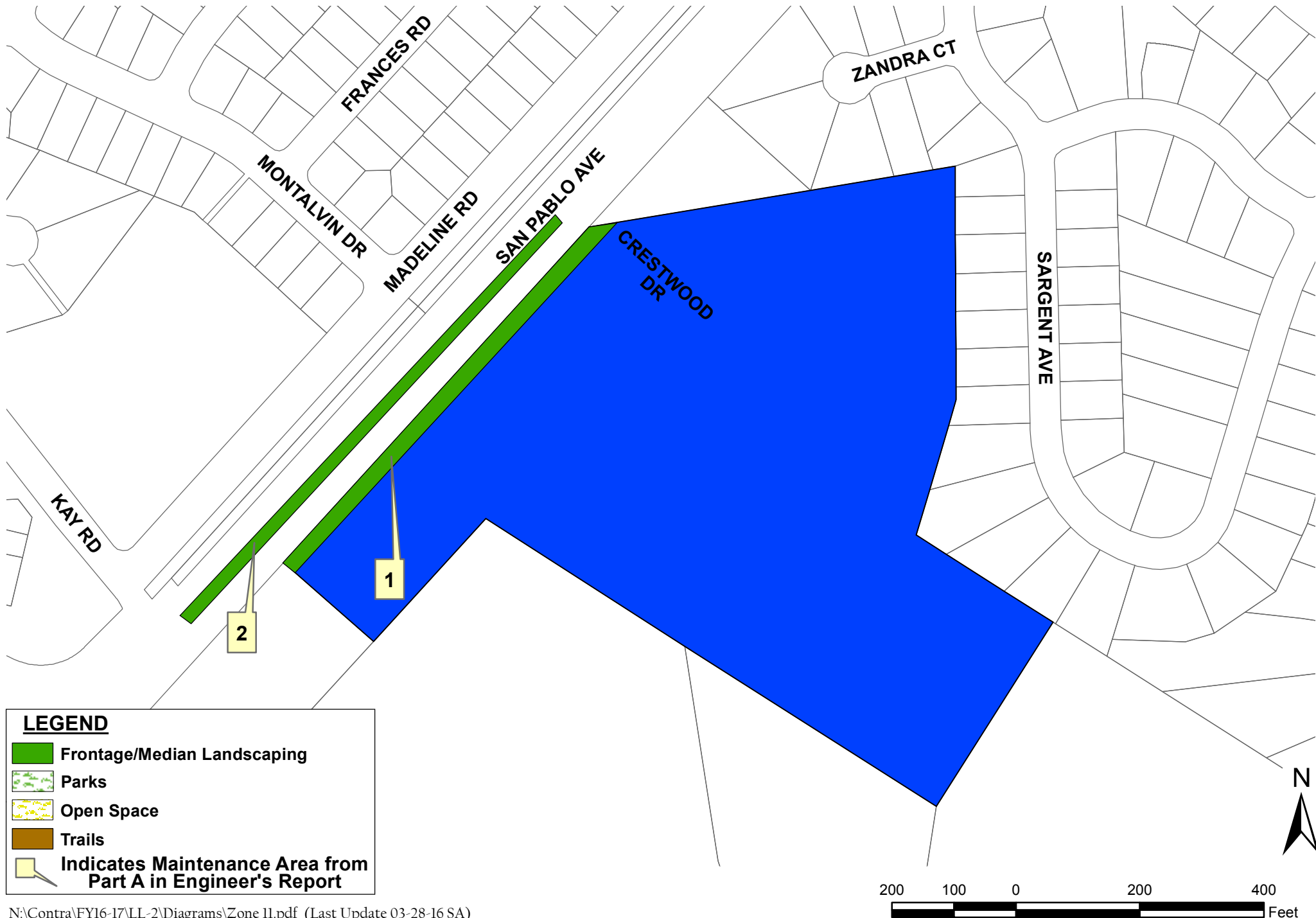
Assessment Diagram Contra Costa County LL-2 Zone 7



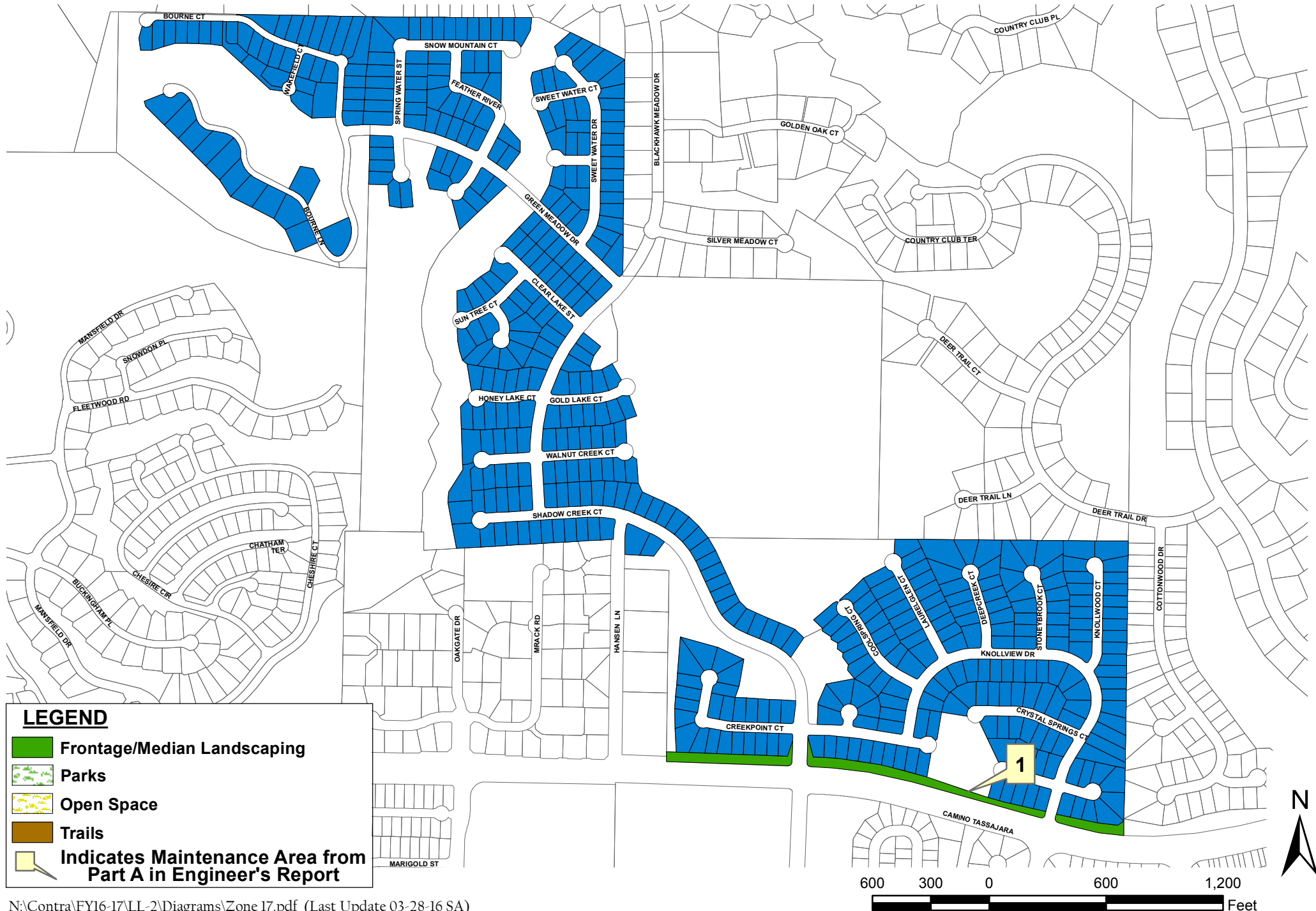
Assessment Diagram Contra Costa County LL-2 Zone 10



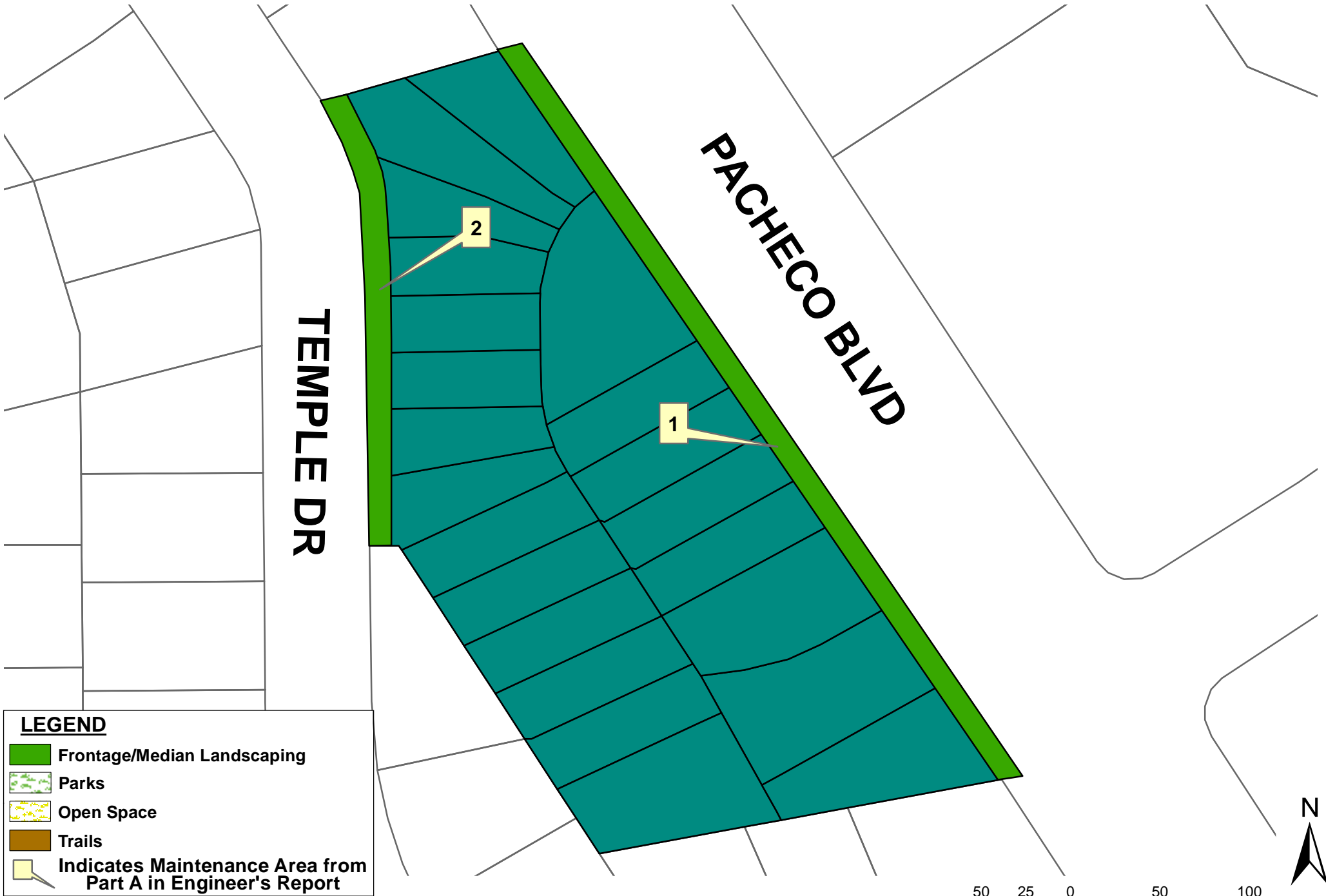
Assessment Diagram Contra Costa County LL-2 Zone II



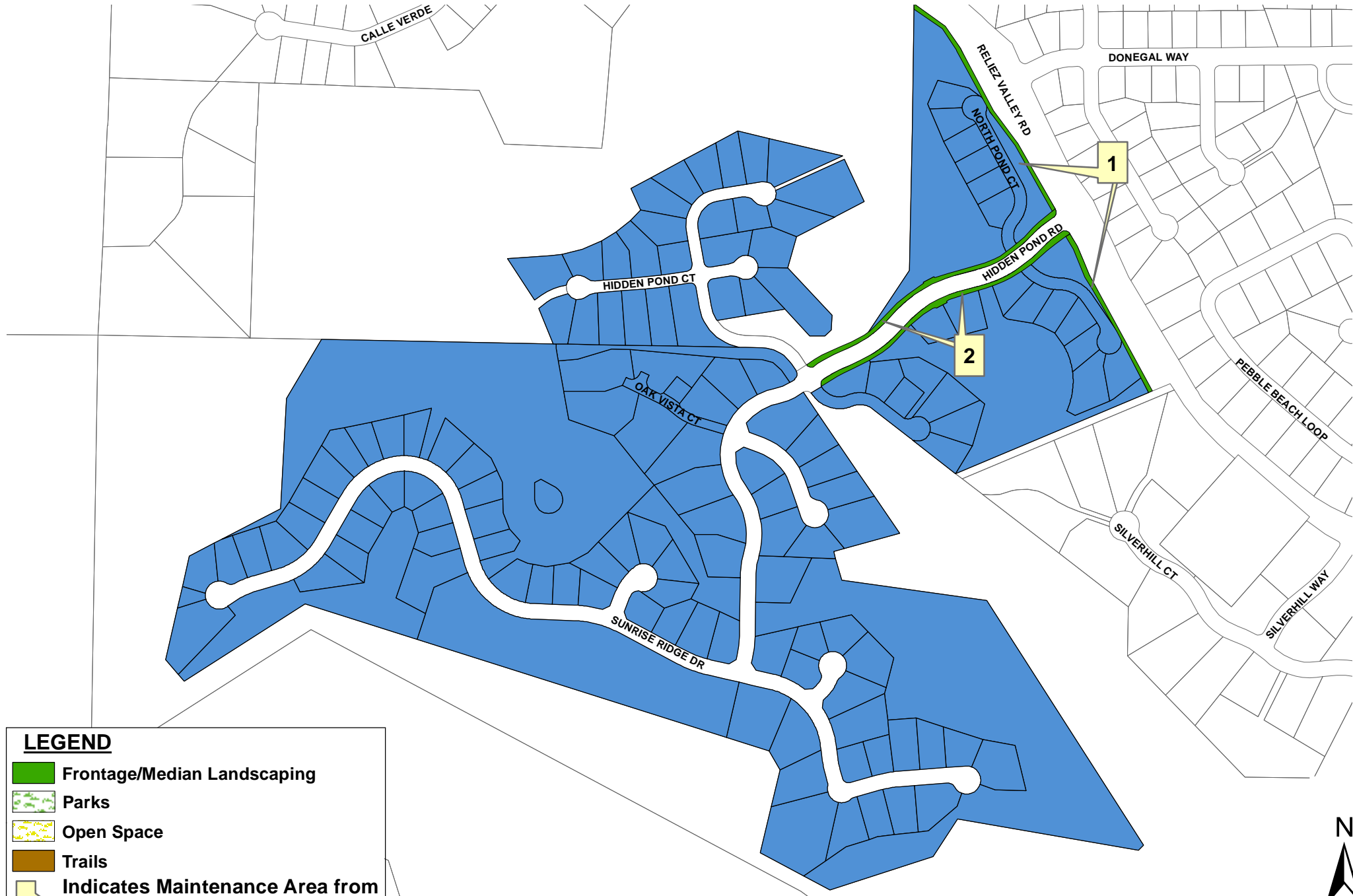
Assessment Diagram Contra Costa County LL-2 Zone 17



Assessment Diagram
Contra Costa County LL-2
Zone 18



Assessment Diagram Contra Costa County LL-2 Zone 19

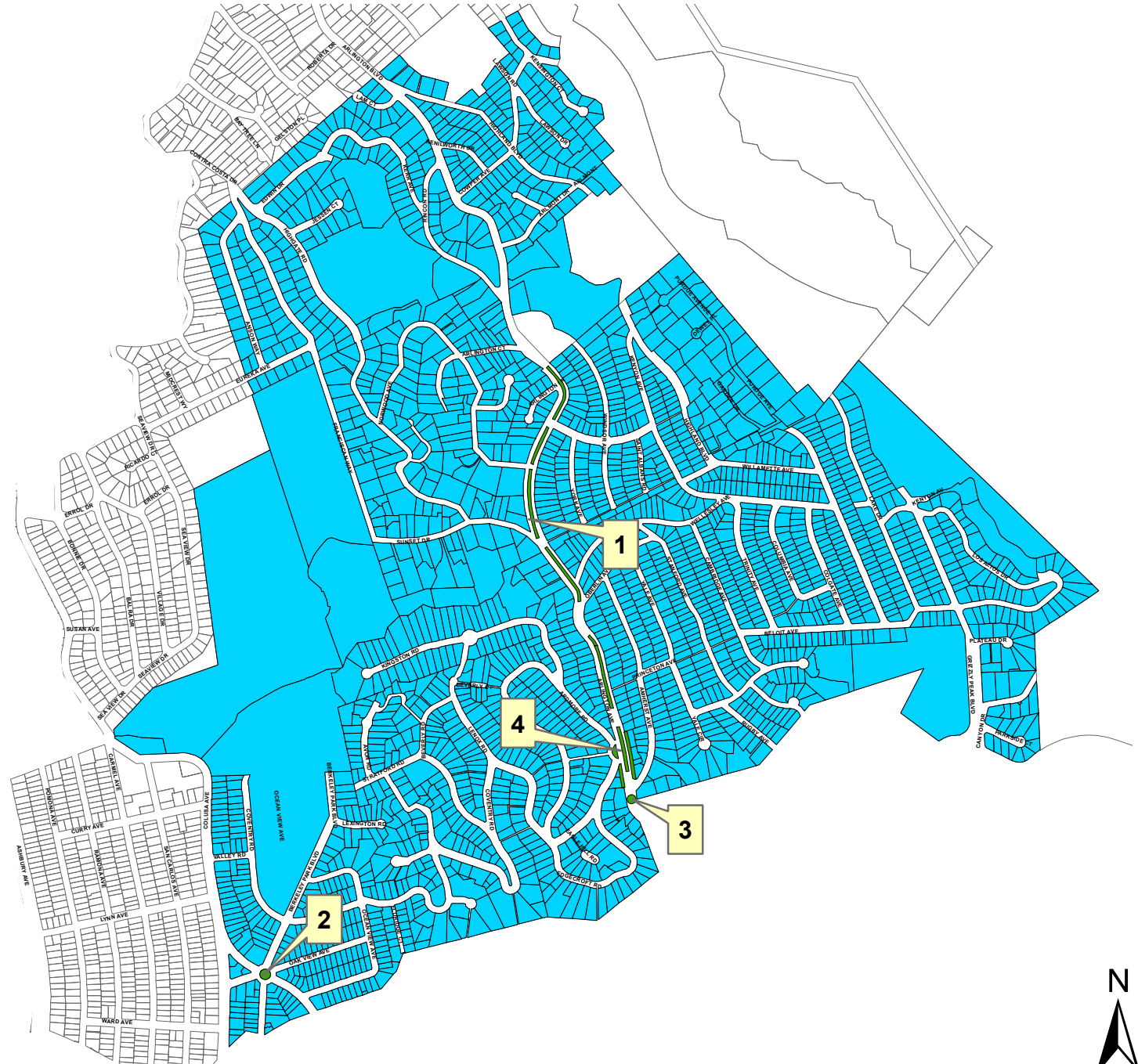


LEGEND




- Frontage/Median Landscaping
- Parks
- Open Space
- Trails
- 1
 Indicates Maintenance Area from Part A in Engineer's Report



Assessment Diagram Contra Costa County LL-2 Zone 21



LEGEND

-  Frontage/Median Landscaping
-  Parks
-  Open Space
-  Trails
-  Indicates Maintenance Area from Part A in Engineer's Report



Assessment Diagram Contra Costa County LL-2 Zone 22

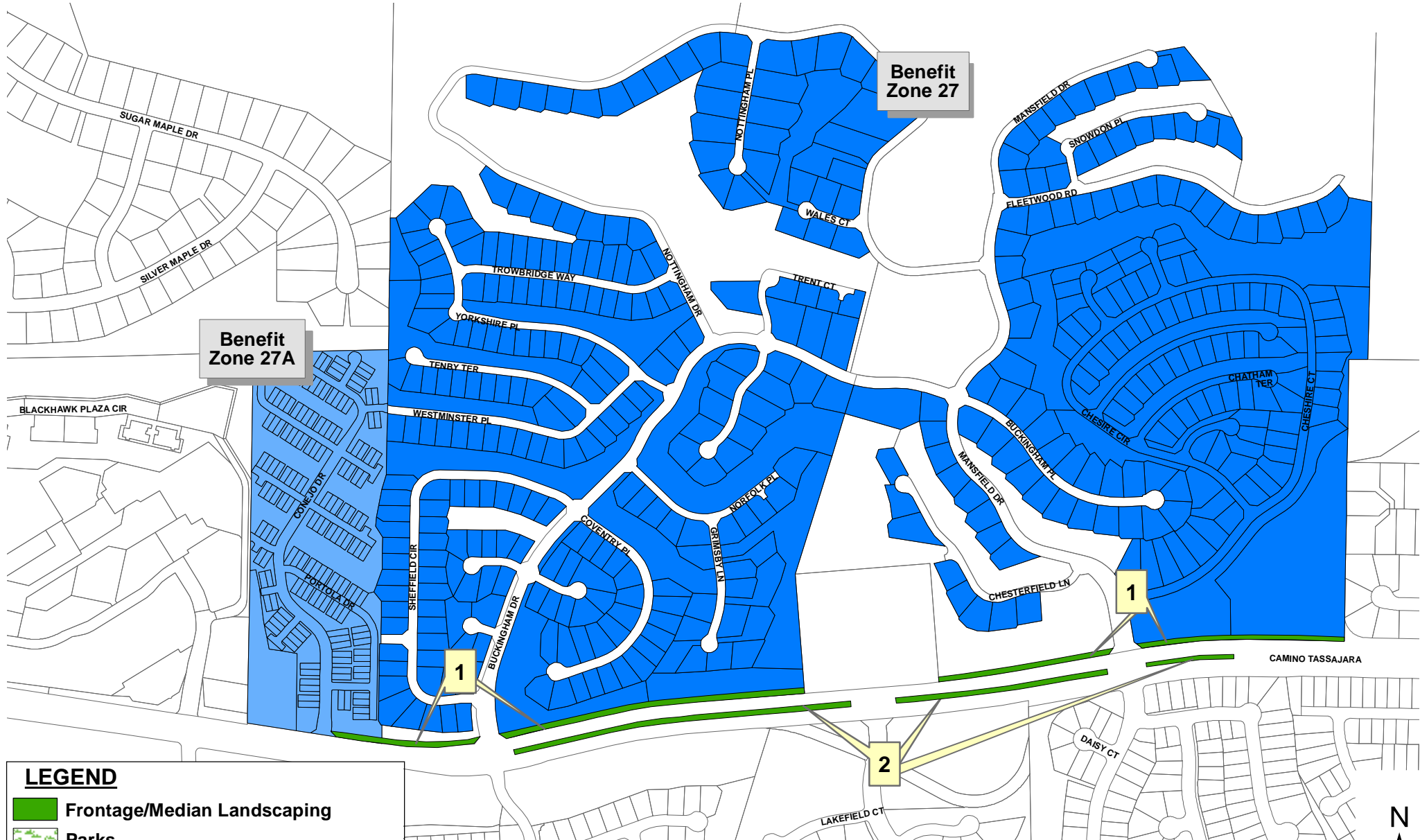


LEGEND

- Frontage/Median Landscaping
- Parks
- Open Space
- Trails
- Indicates Maintenance Area from Part A in Engineer's Report



Assessment Diagram Contra Costa County LL-2 Zone 27



**Benefit
Zone 27A**

**Benefit
Zone 27**

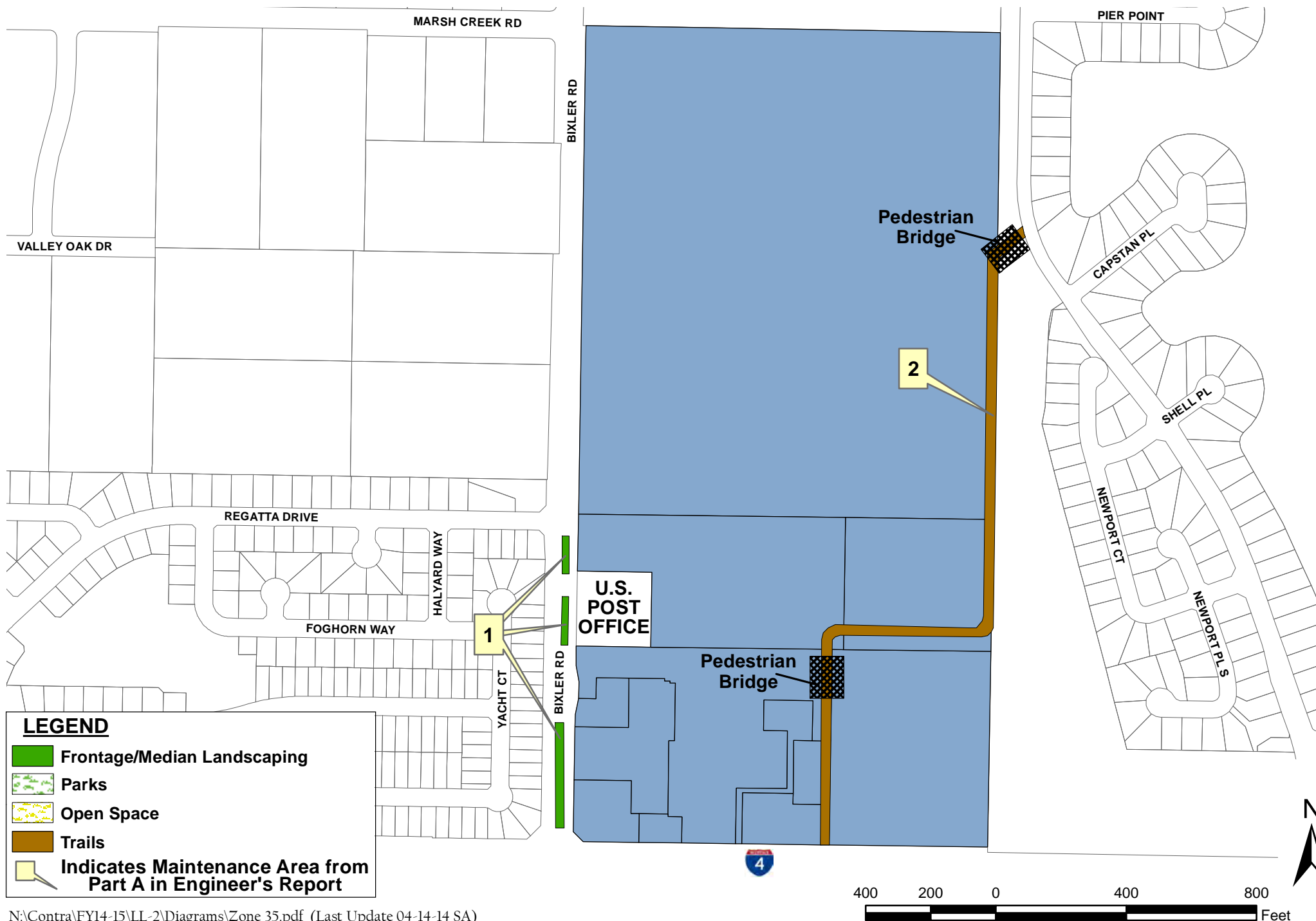
LEGEND

- Frontage/Median Landscaping
- Parks
- Open Space
- Trails
- Indicates Maintenance Area from Part A in Engineer's Report

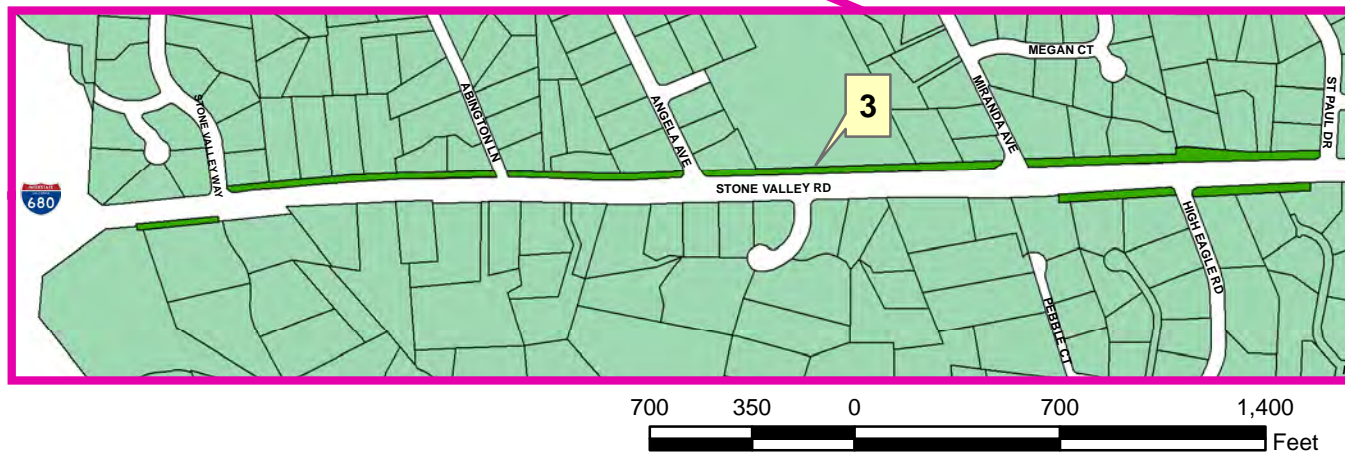
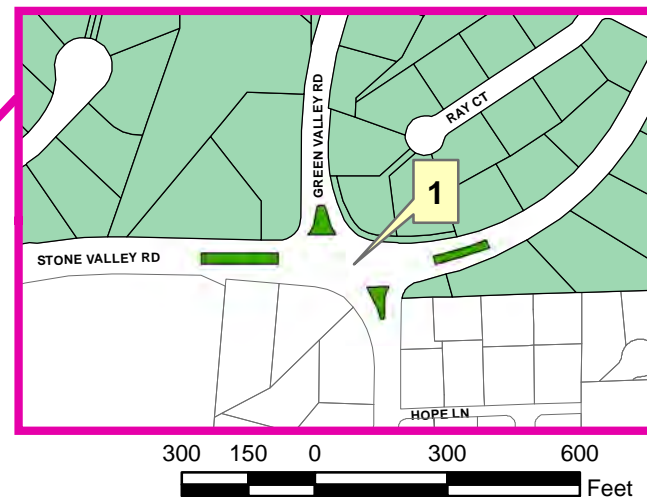
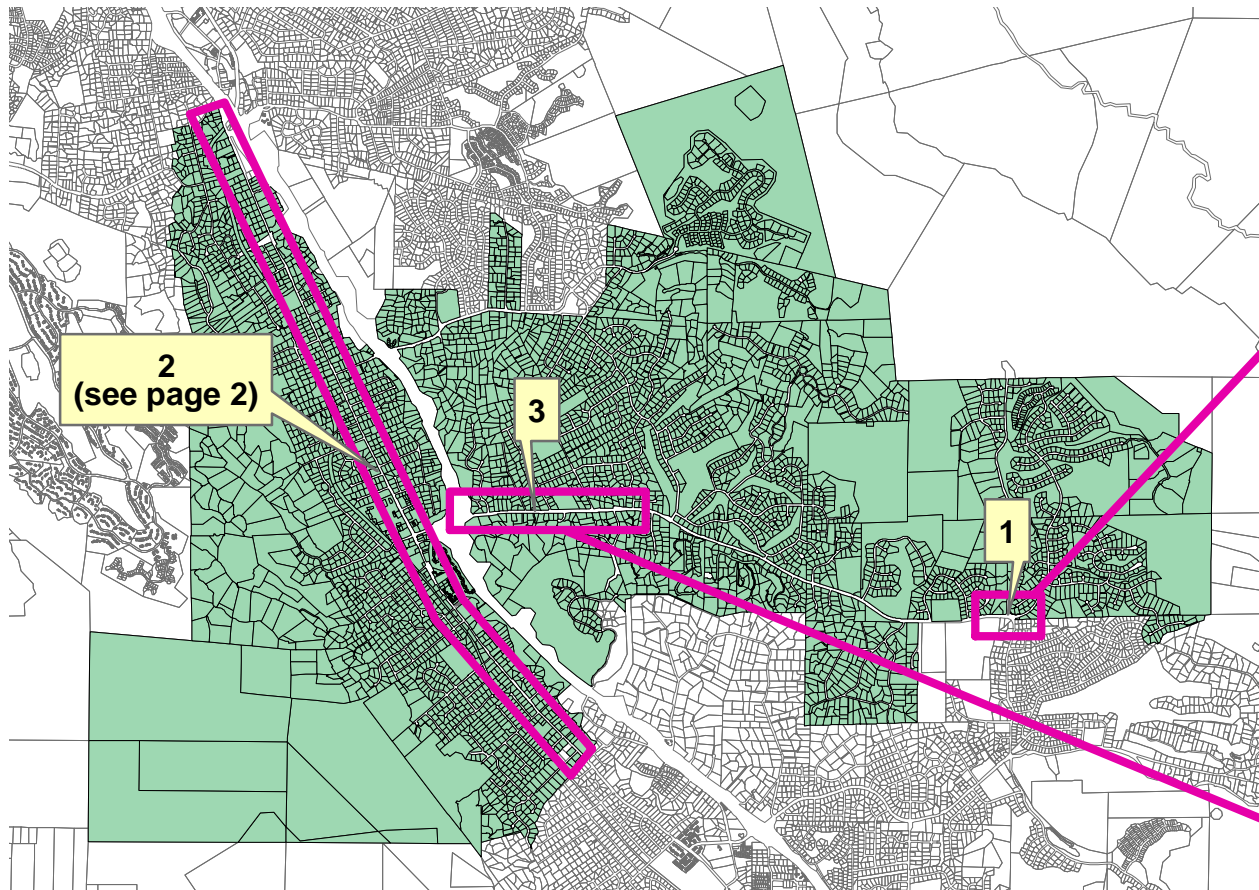
* Improvements include 10' behind sidewalk on Camino Tassajara & medians
- slopes are HOA maintained



Assessment Diagram Contra Costa County LL-2 Zone 35



Assessment Diagram Contra Costa County LL-2 Zone 36

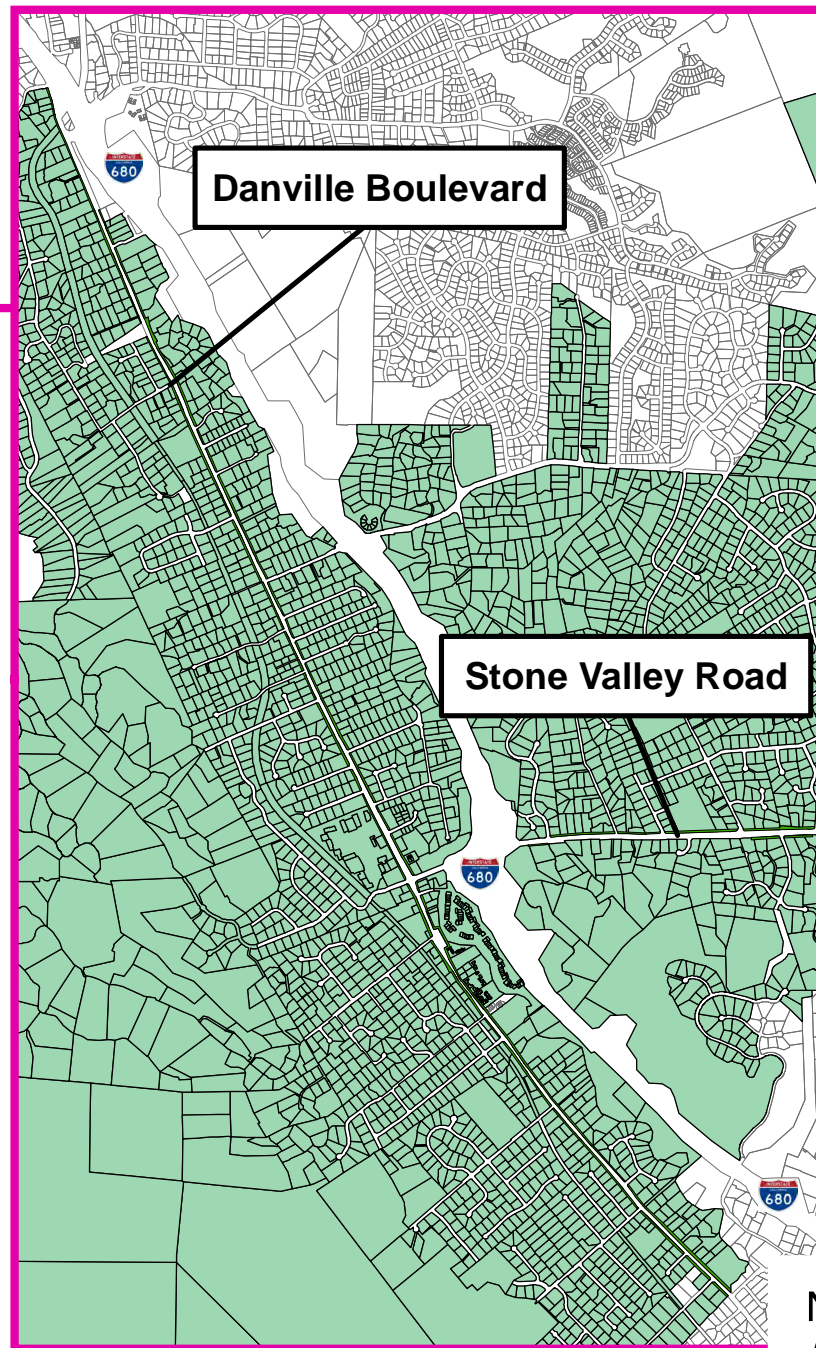
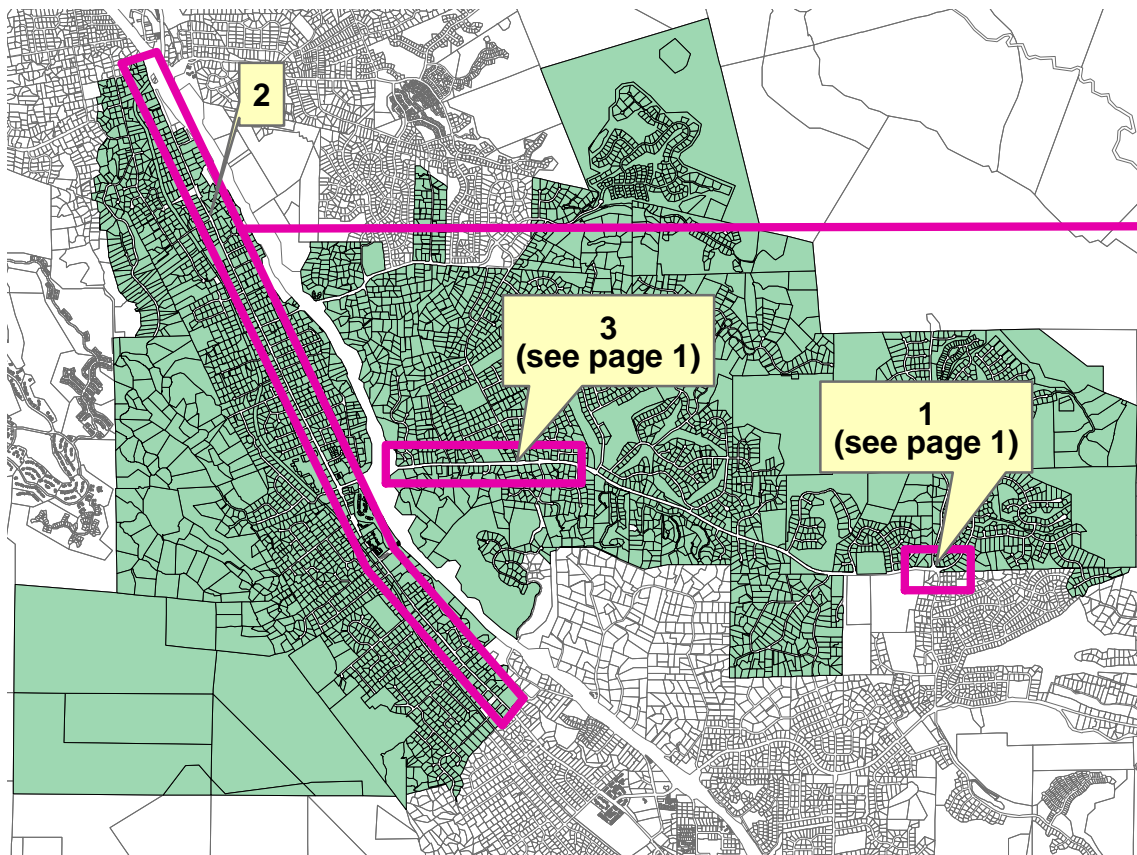


LEGEND

- Frontage/Median Landscaping
- Parks
- Open Space
- Trails
- Indicates Maintenance Area from Part A in Engineer's Report



Assessment Diagram Contra Costa County LL-2 Zone 36

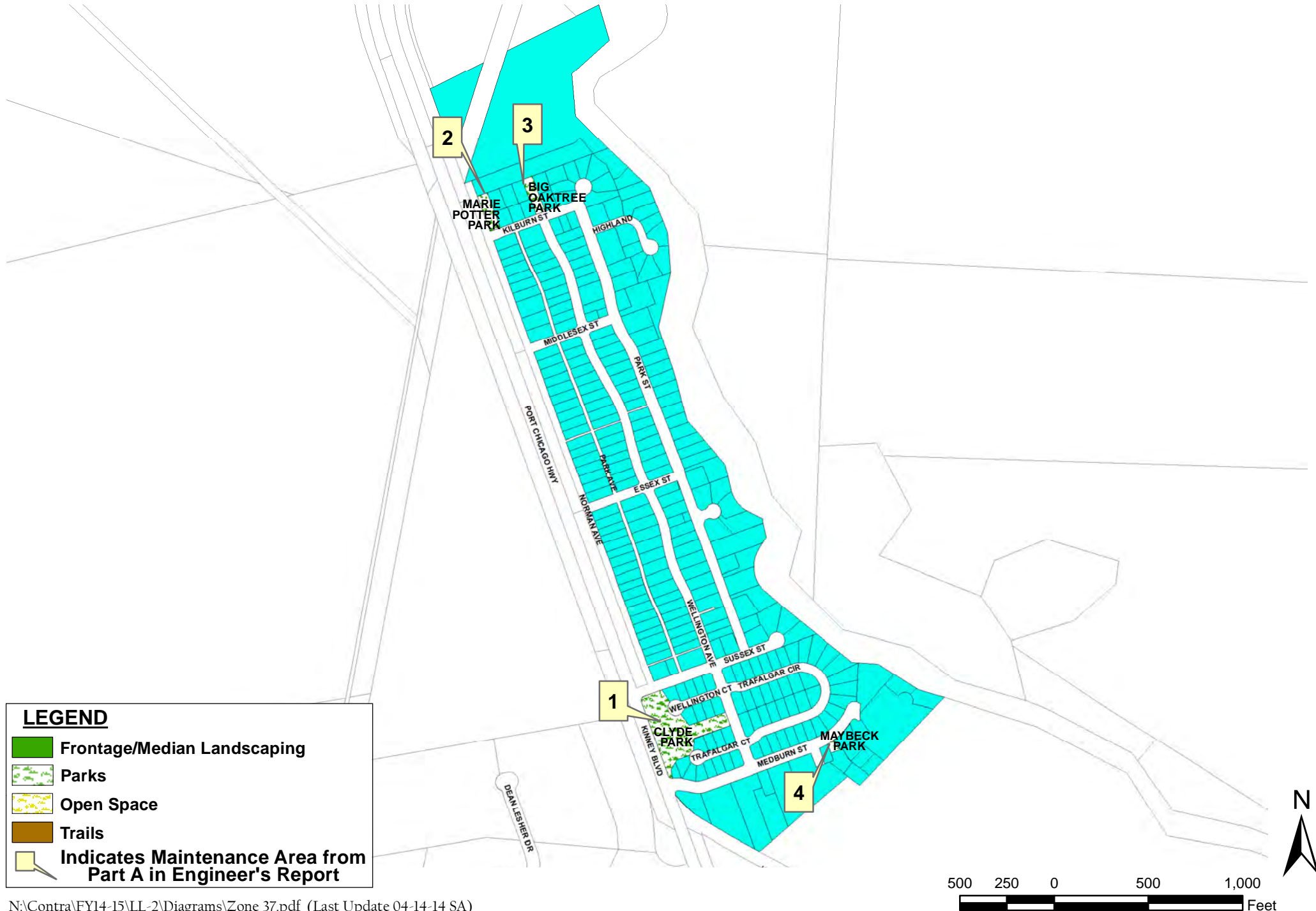


LEGEND

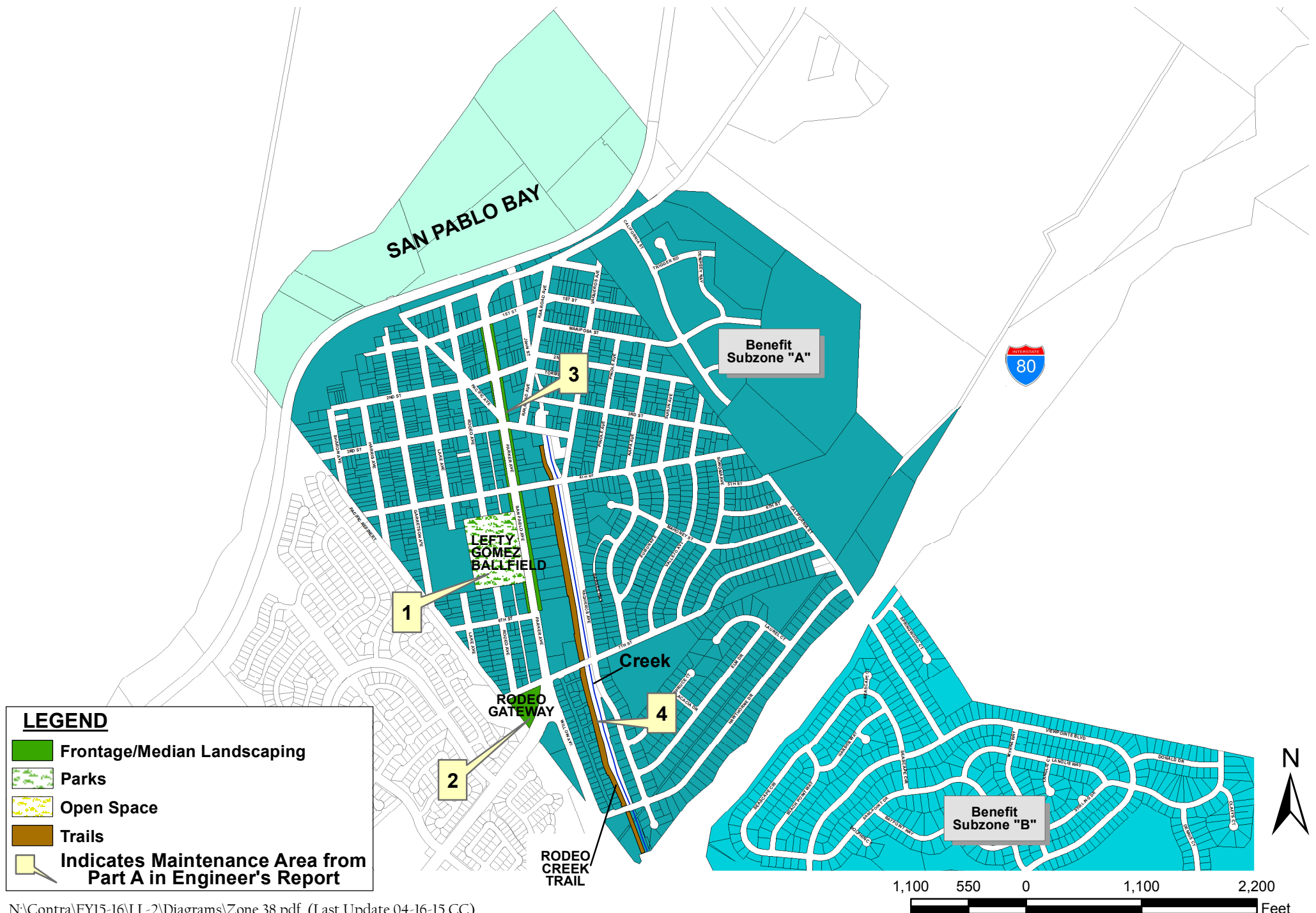
- Frontage/Median Landscaping
- Parks
- Open Space
- Trails
- Indicates Maintenance Area from Part A in Engineer's Report



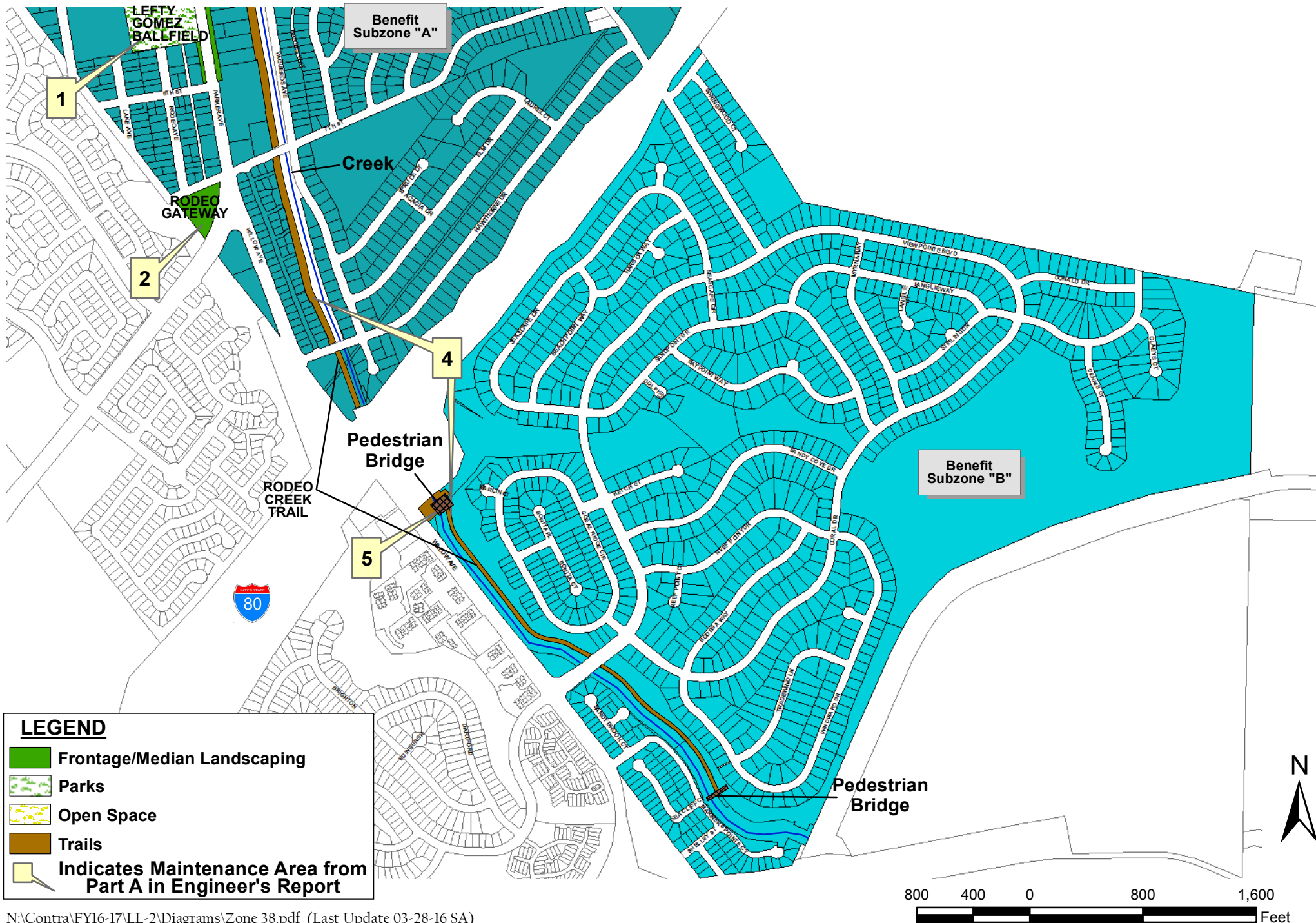
Assessment Diagram Contra Costa County LL-2 Zone 37



Assessment Diagram Contra Costa County LL-2 Zone 38



Assessment Diagram Contra Costa County LL-2 Zone 38

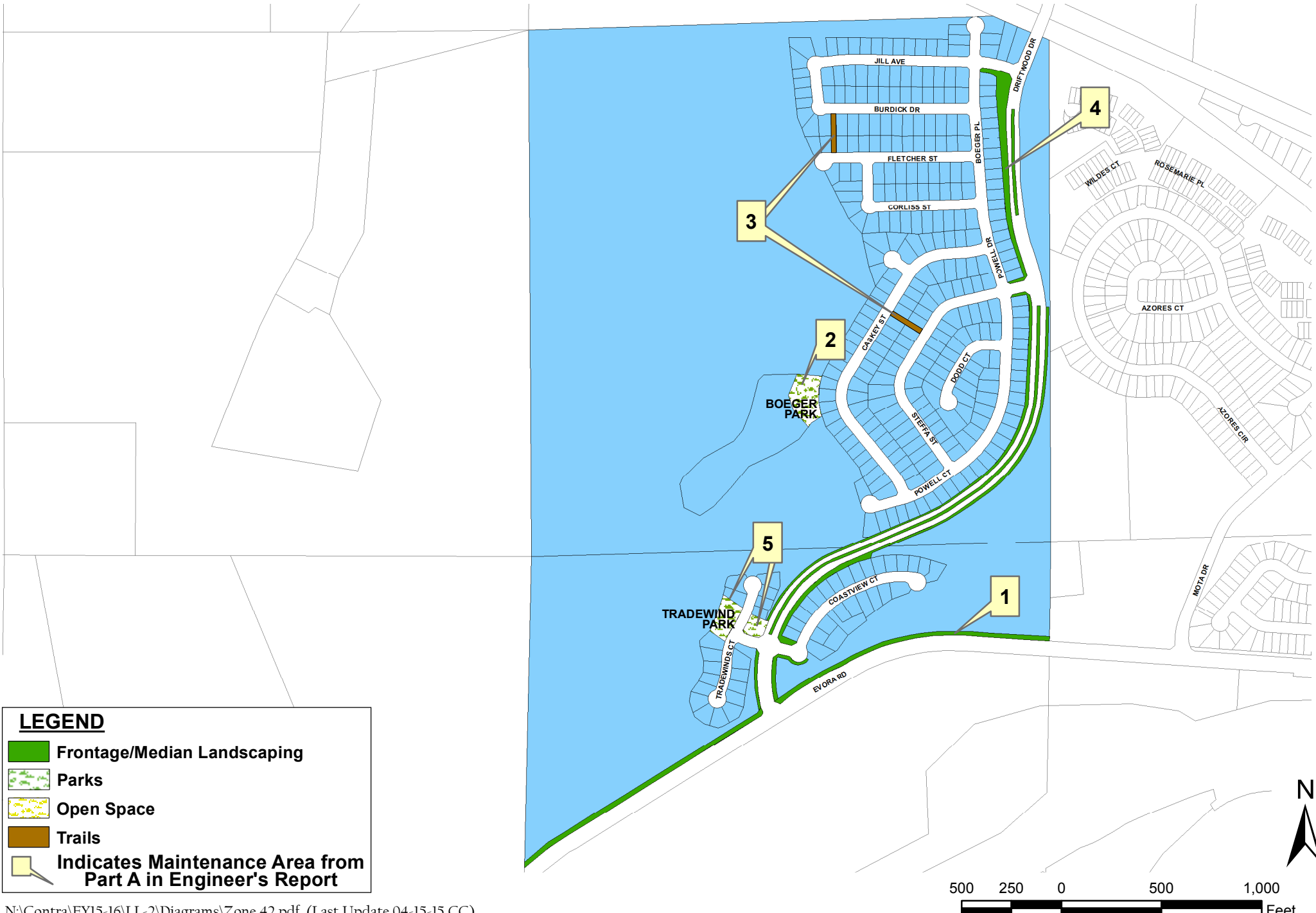


LEGEND

- Frontage/Median Landscaping
- Parks
- Open Space
- Trails
- Indicates Maintenance Area from Part A in Engineer's Report



Assessment Diagram Contra Costa County LL-2 Zone 42

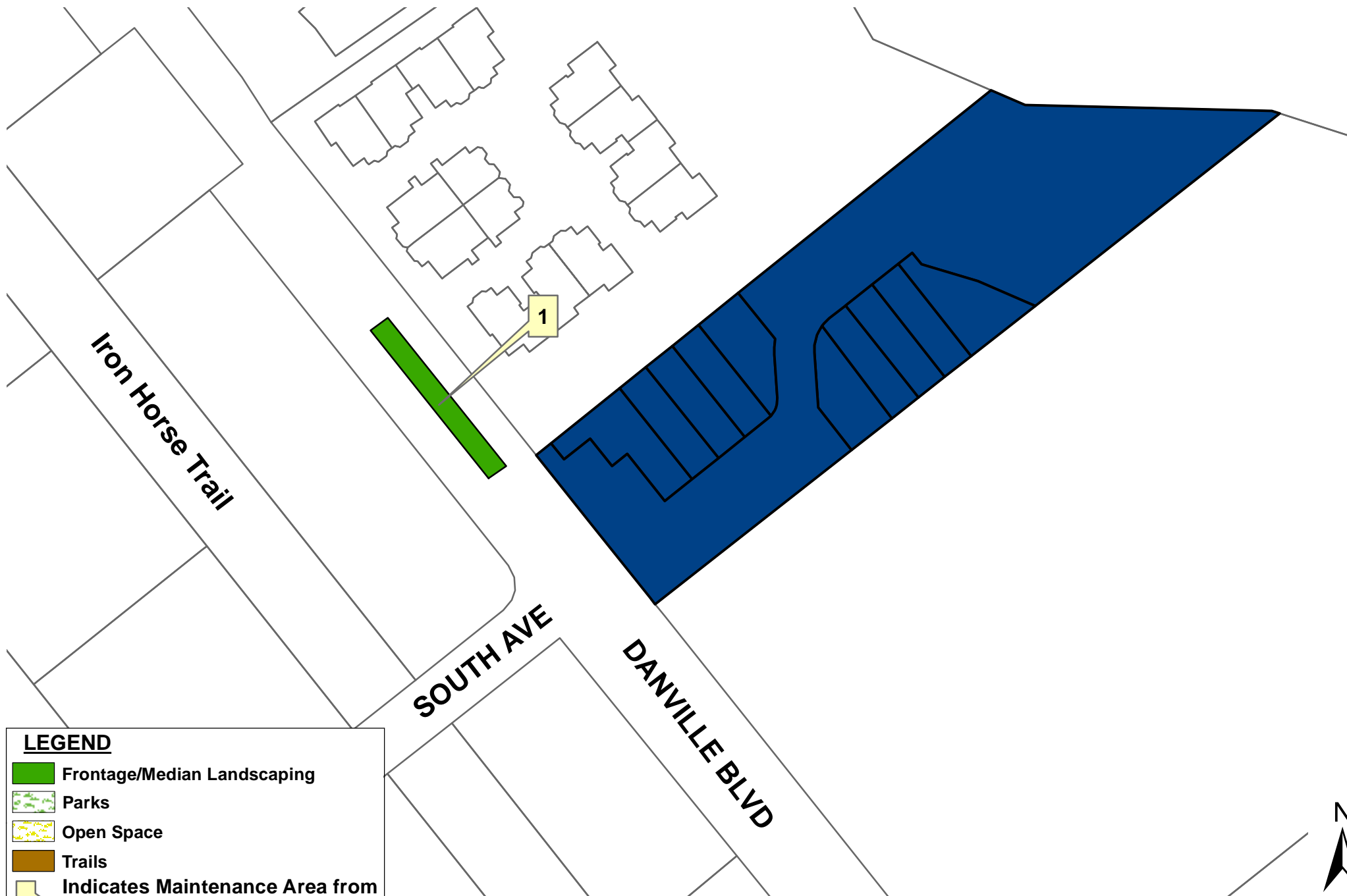


LEGEND

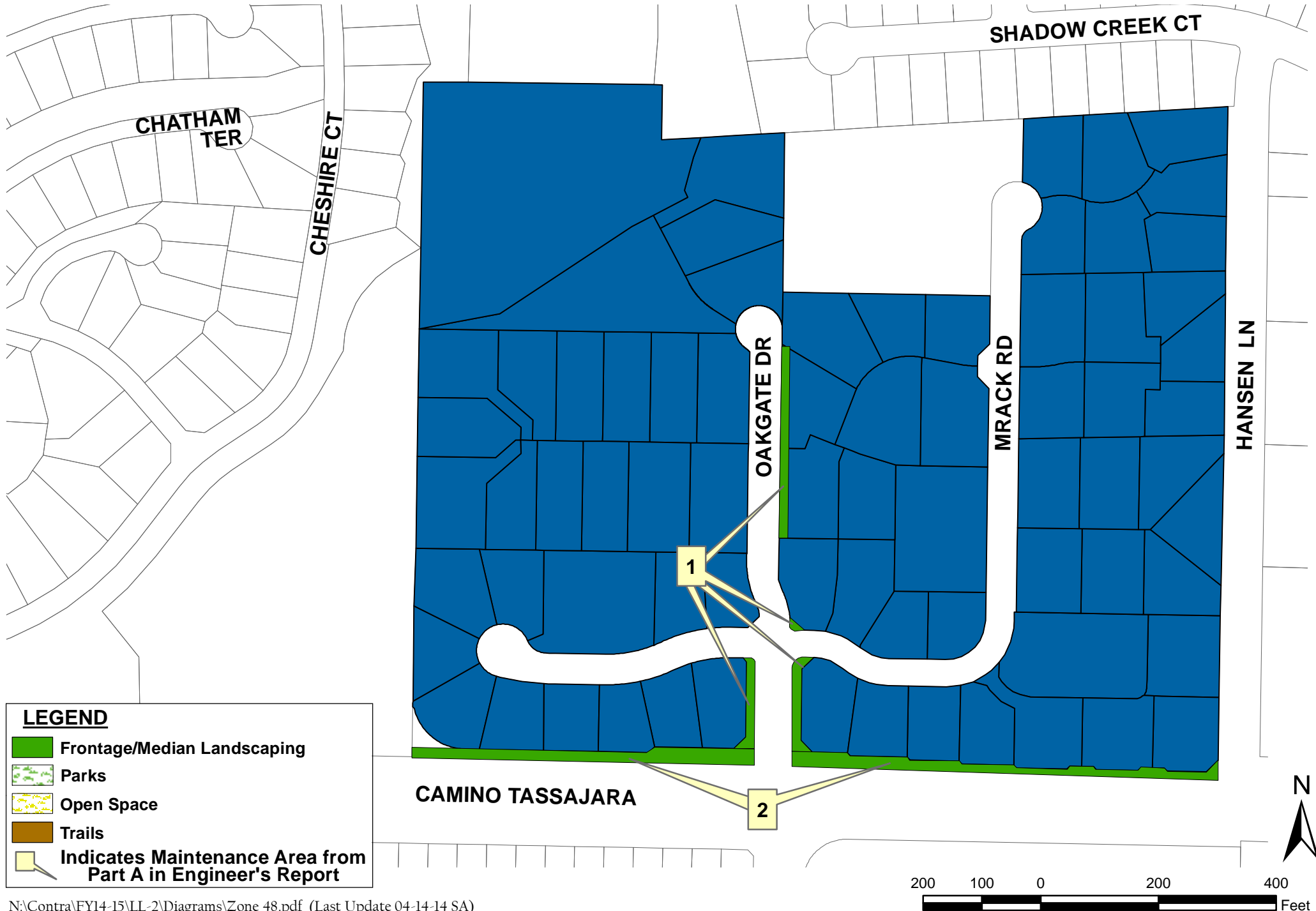
- Frontage/Median Landscaping
- Parks
- Open Space
- Trails
- Indicates Maintenance Area from Part A in Engineer's Report



Assessment Diagram Contra Costa County LL-2 Zone 45



Assessment Diagram Contra Costa County LL-2 Zone 48



Assessment Diagram Contra Costa County LL-2 Zone 54



Assessment Diagram Contra Costa County LL-2 Zone 57

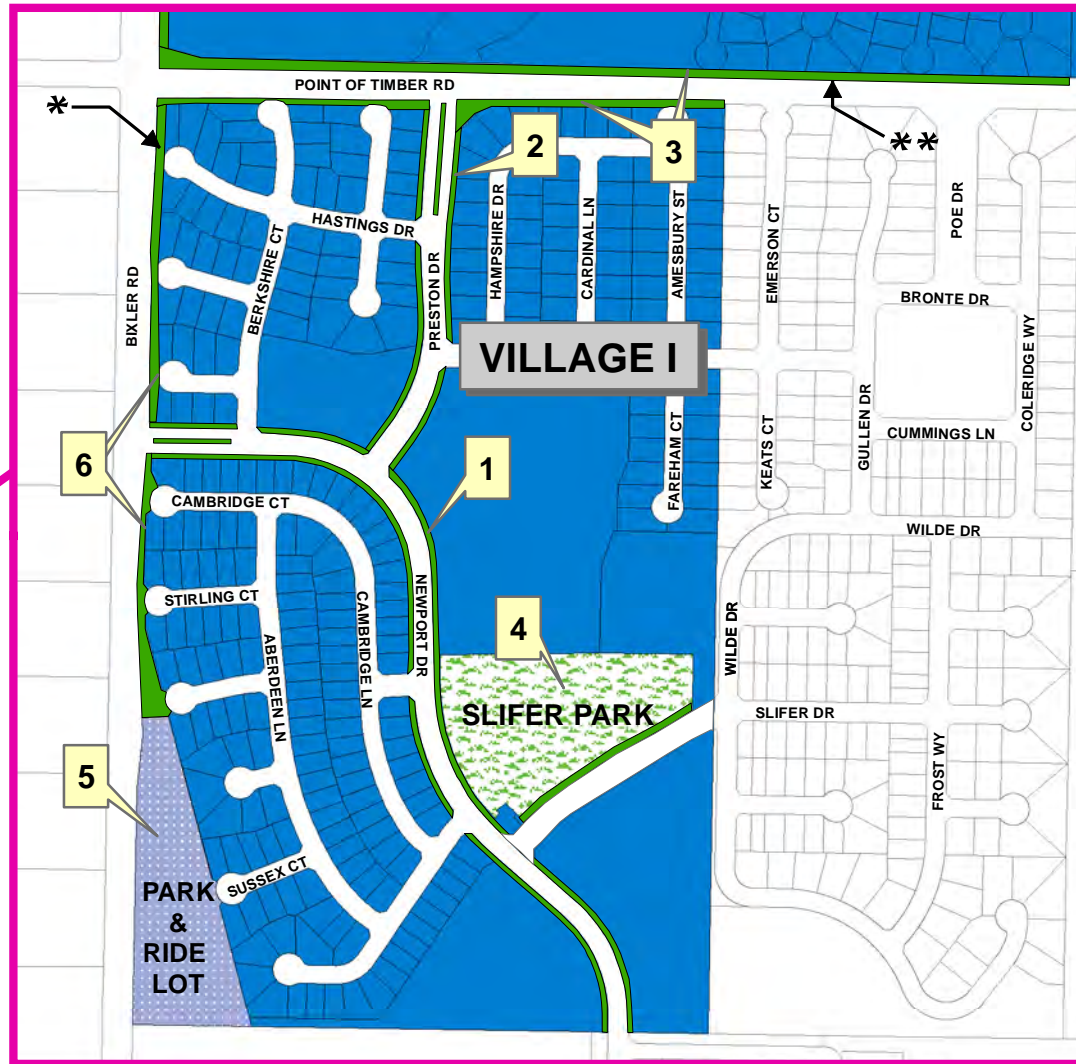
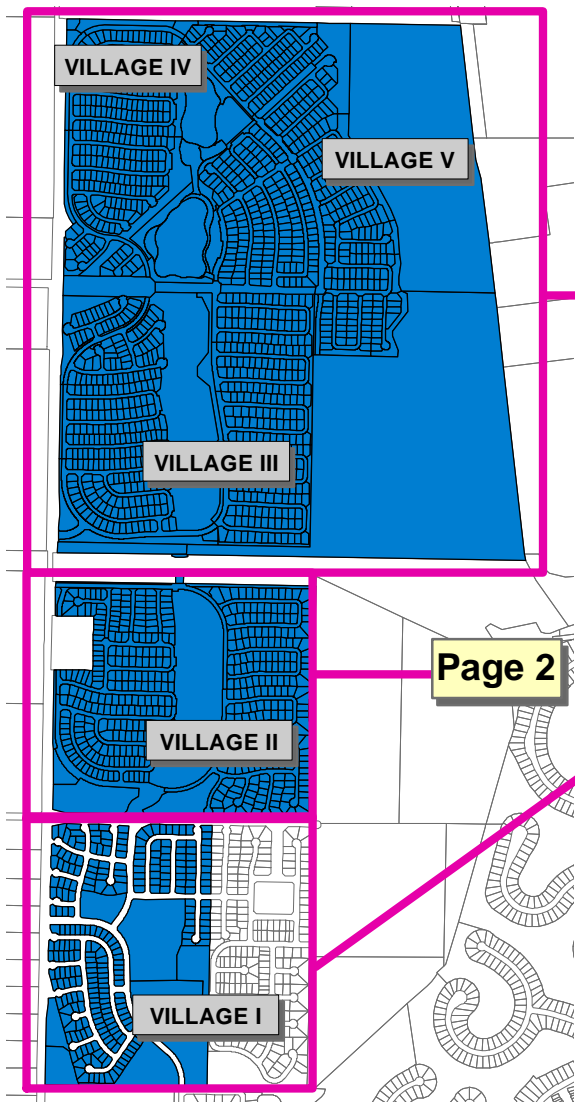


LEGEND

- Frontage/Median Landscaping
- Parks
- Open Space
- Trails
- Indicates Maintenance Area from Part A in Engineer's Report



Assessment Diagram Contra Costa County LL-2 Zone 61



LEGEND

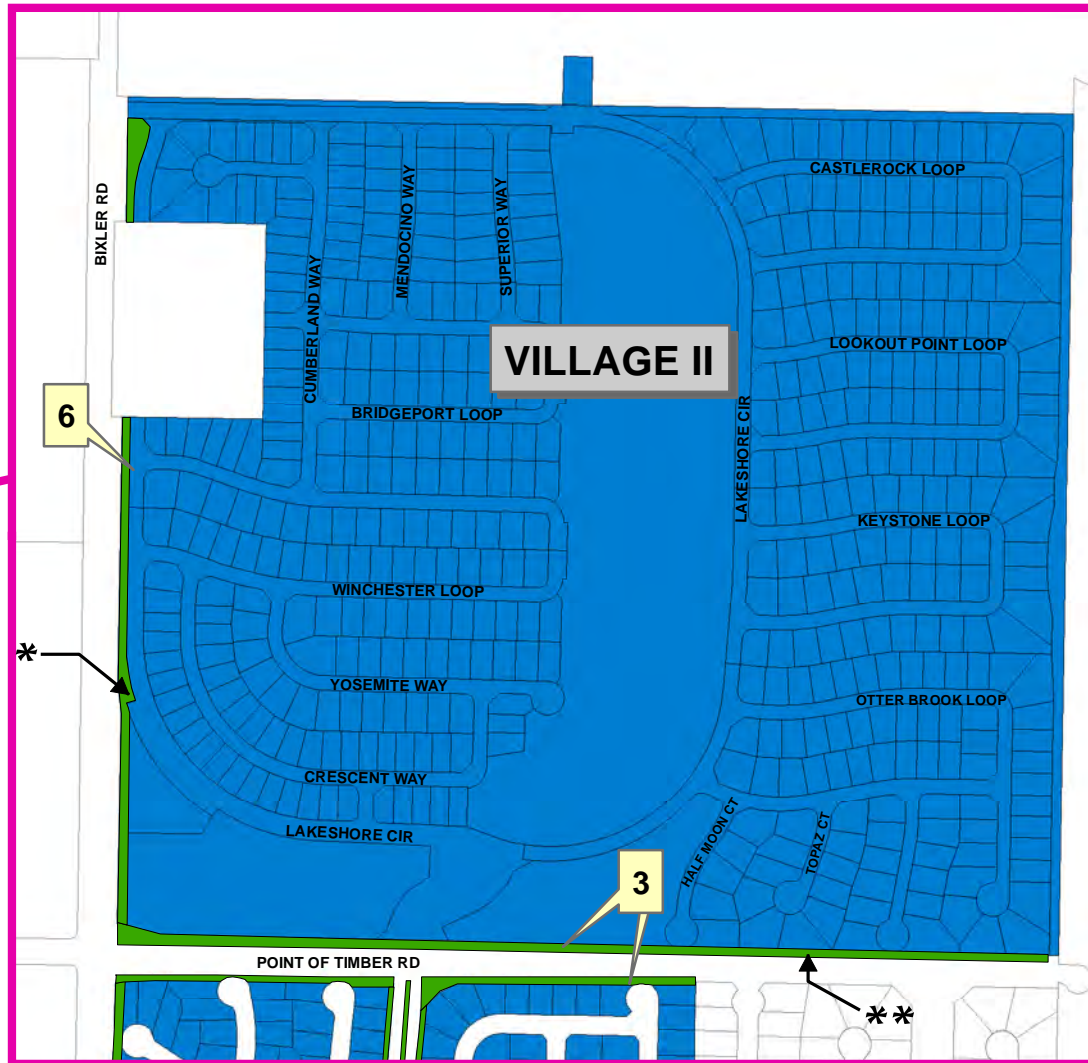
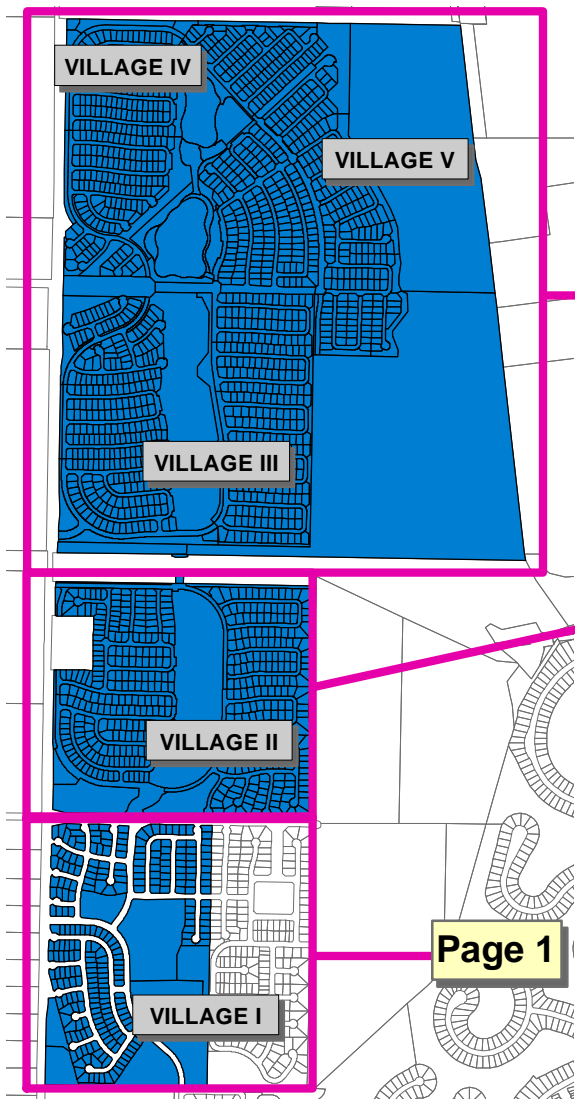
- Frontage/Median Landscaping
- Parks
- Open Space
- Trails
- Park & Ride Lots
- Indicates Maintenance Area from Part A in Engineer's Report

* County maintained landscape areas are all on the east side of Bixler Road. There are intermittent pockets at entryways which are maintained by other services (HOAs).

** Point of Timber Road is between Villages I and II (north frontage Village I and south frontage Village II). The entryway to The Lakes development is maintained by other services (HOAs).



Assessment Diagram Contra Costa County LL-2 Zone 6l



LEGEND

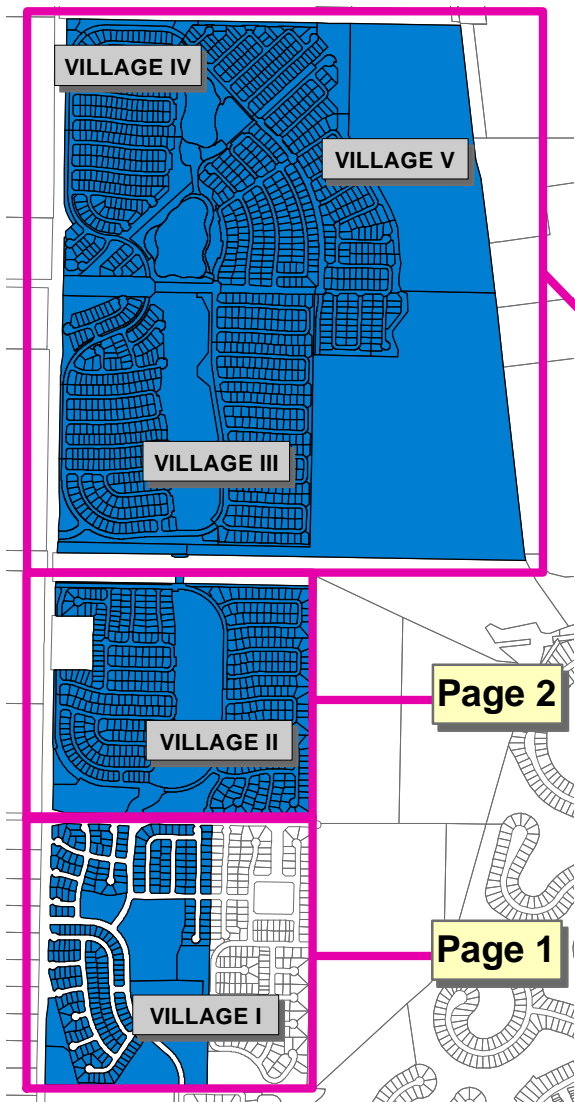
- Frontage/Median Landscaping
- Parks
- Open Space
- Trails
- Park & Ride Lots
- Indicates Maintenance Area from Part A in Engineer's Report

* County maintained landscape areas are all on the east side of Bixler Road. There are intermittent pockets at entryways which are maintained by other services (HOAs).

** Point of Timber Road is between Villages I and II (north frontage Village I and south frontage Village II). The entryway to The Lakes development is maintained by other services (HOAs).



Assessment Diagram Contra Costa County LL-2 Zone 61

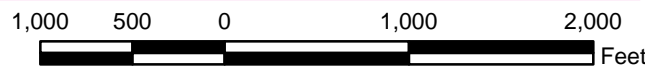


Page 2

Page 1



6



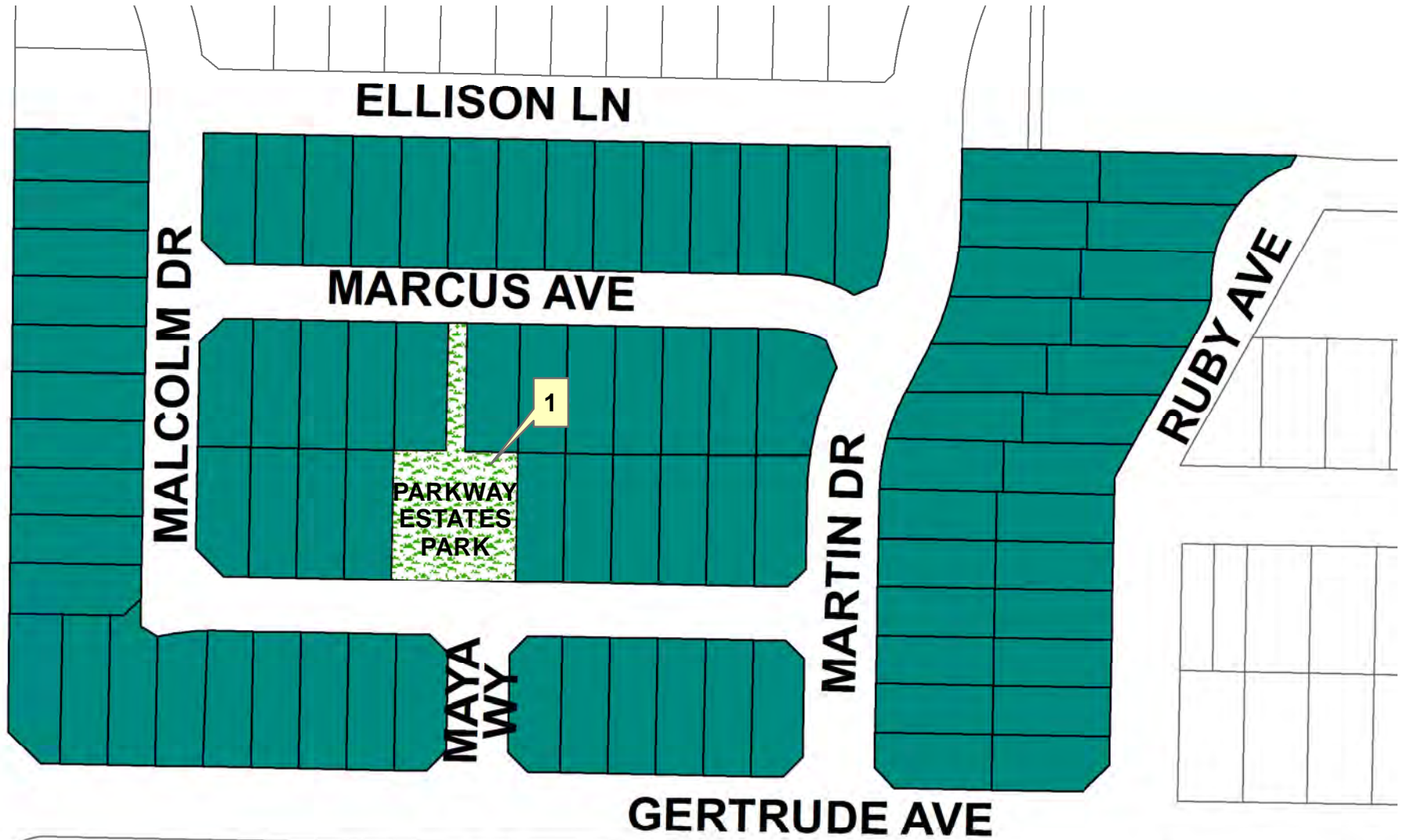
LEGEND

- Frontage/Median Landscaping
- Parks
- Open Space
- Trails
- Park & Ride Lots
- Indicates Maintenance Area from Part A in Engineer's Report

* County maintained landscape areas are all on the east side of Bixler Road. There are intermittent pockets at entryways which are maintained by other services (HOAs).

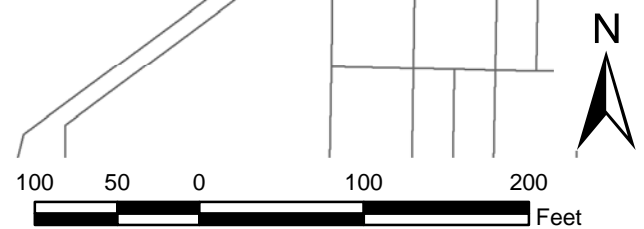


Assessment Diagram
Contra Costa County LL-2
Zone 63



LEGEND

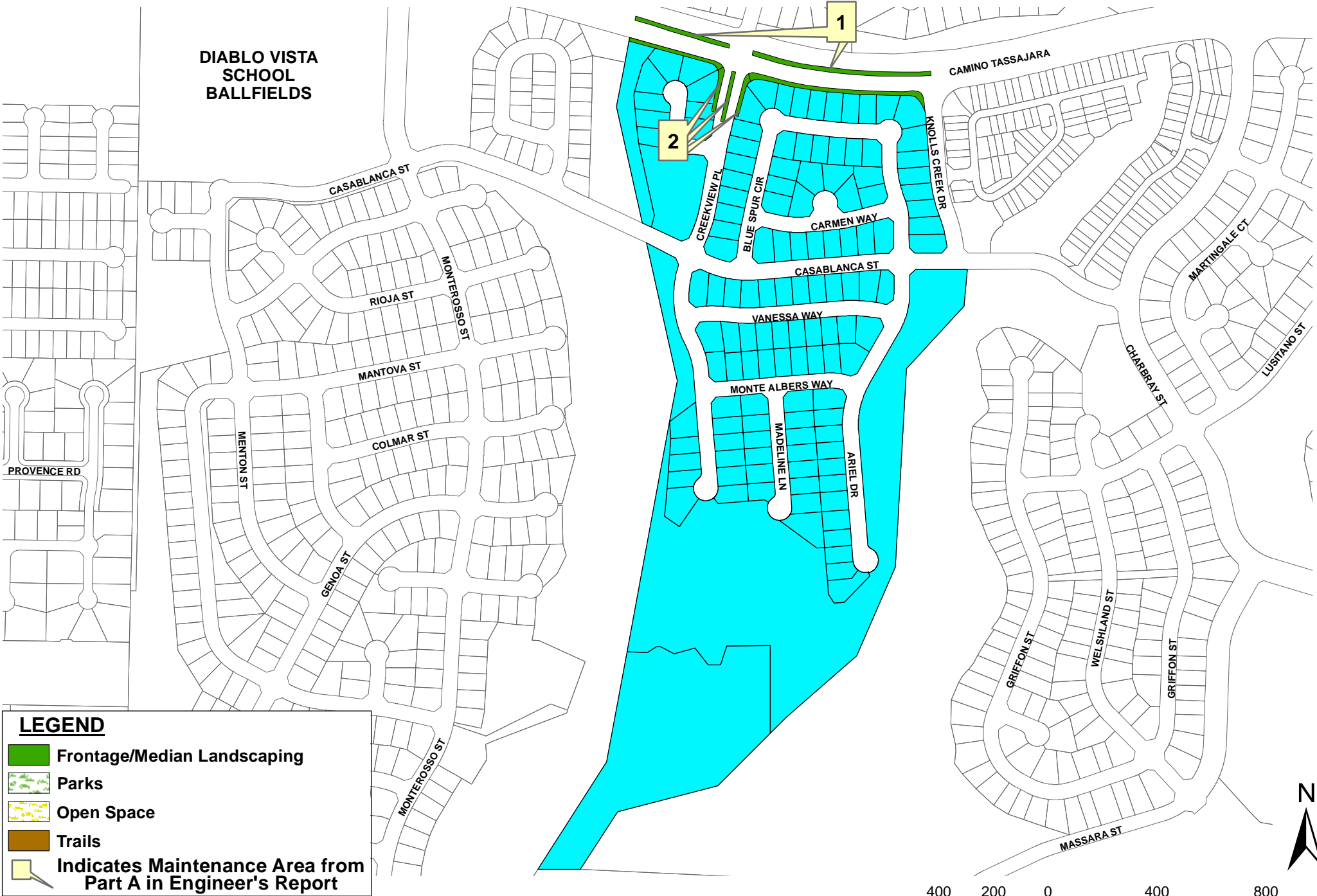
- Frontage/Median Landscaping
- Parks
- Open Space
- Trails
- Indicates Maintenance Area from Part A in Engineer's Report



Assessment Diagram Contra Costa County LL-2 Zone 64



Assessment Diagram Contra Costa County LL-2 Zone 68

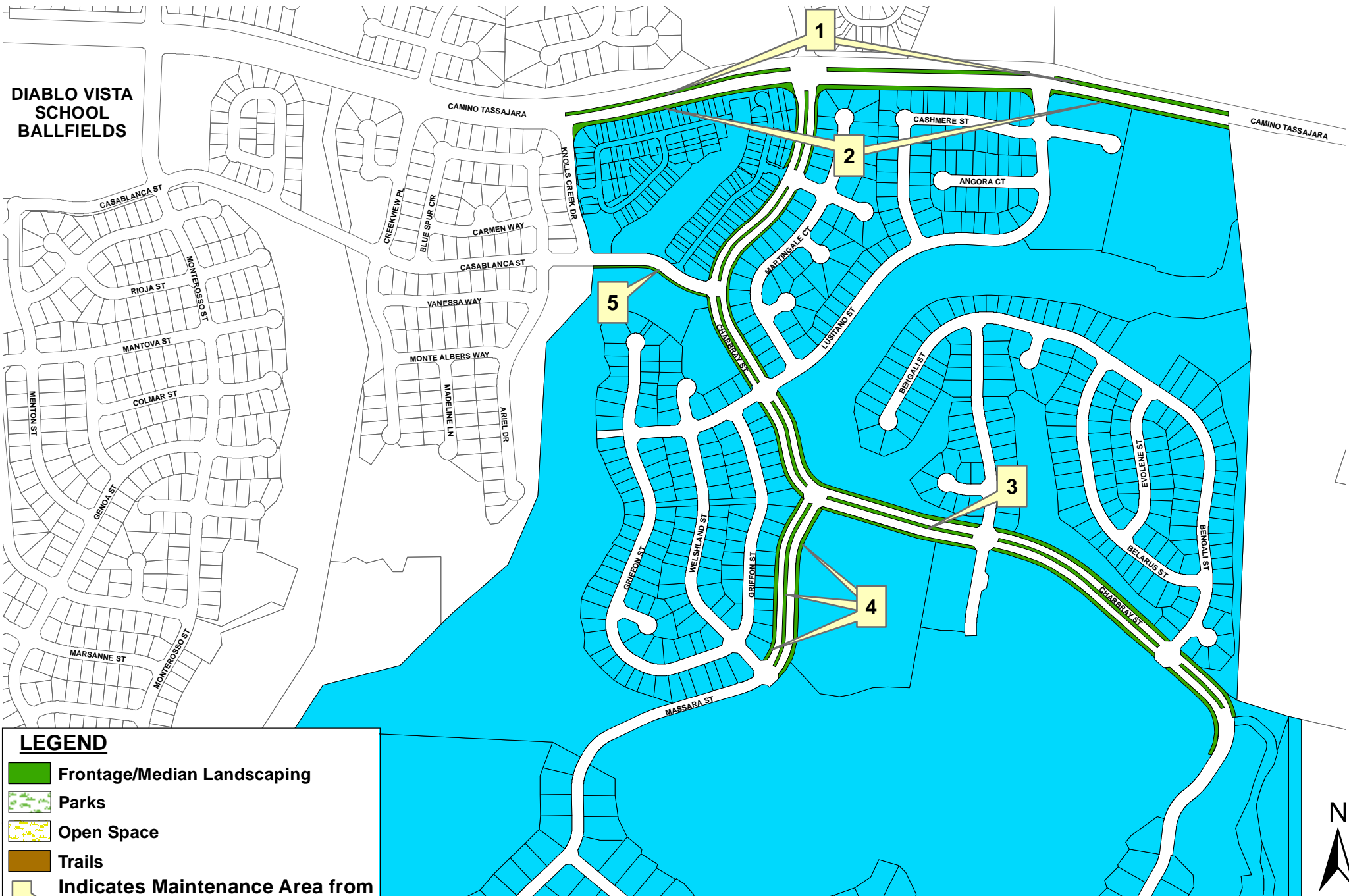


LEGEND

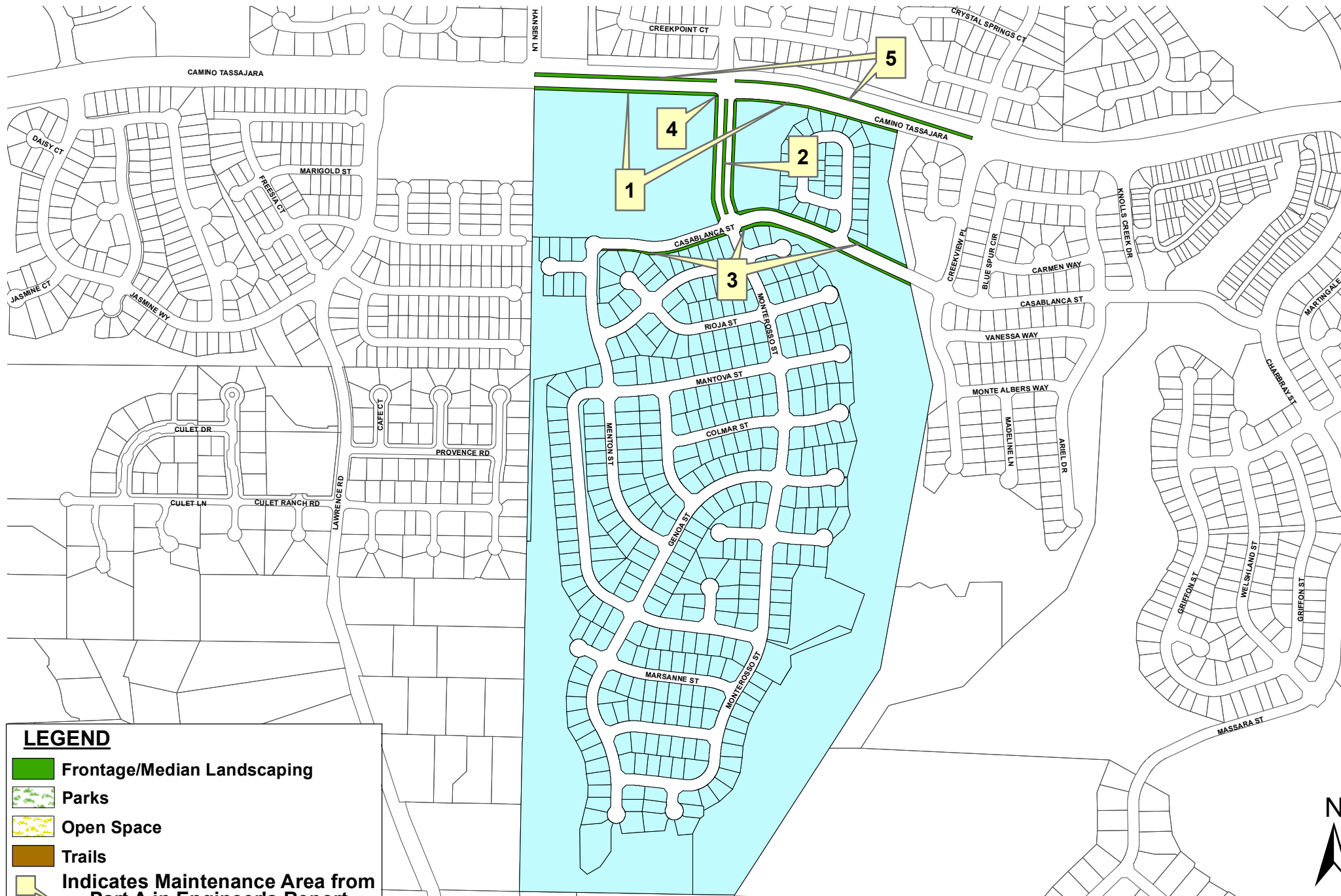
- Frontage/Median Landscaping
- Parks
- Open Space
- Trails
- Indicates Maintenance Area from Part A in Engineer's Report



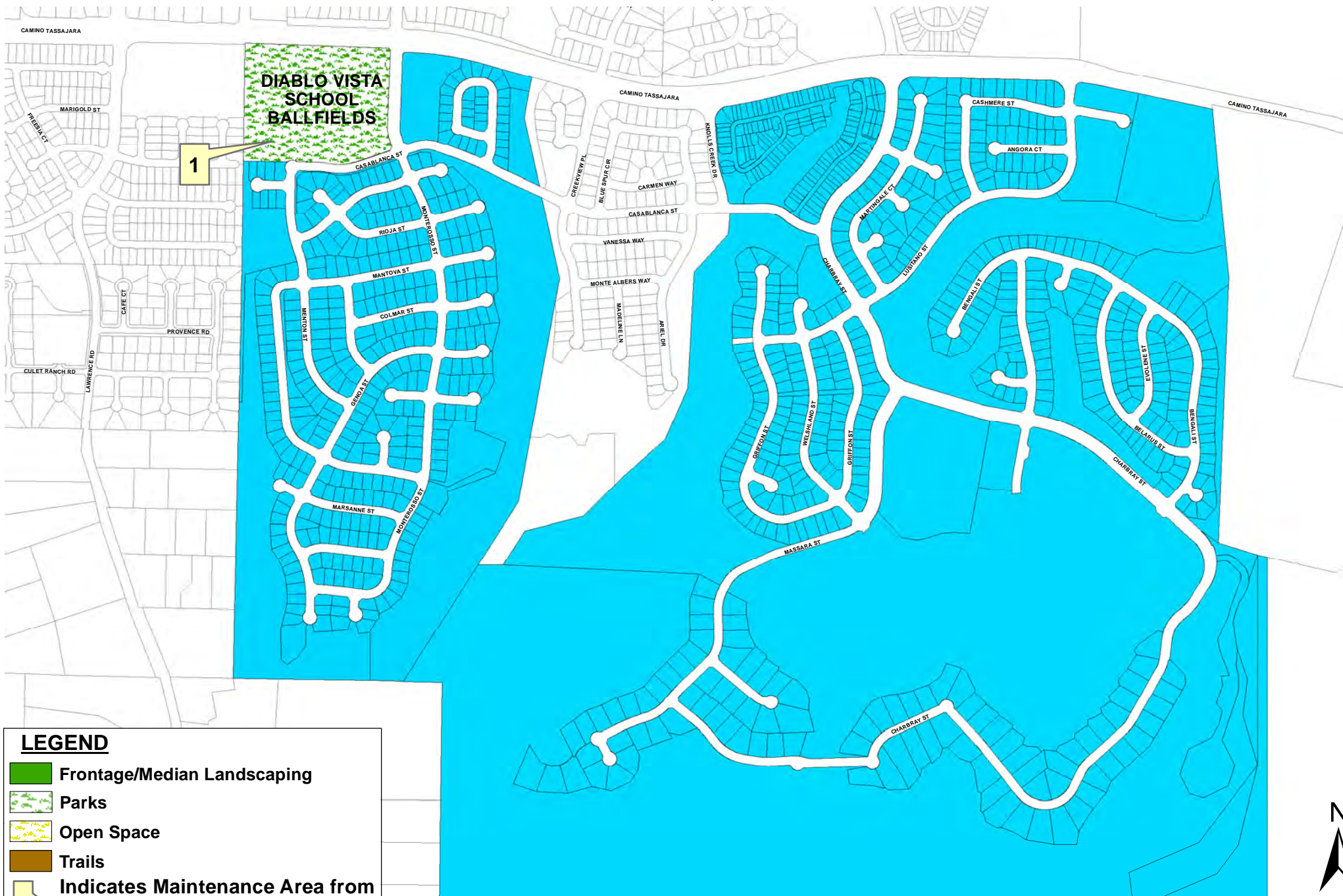
Assessment Diagram Contra Costa County LL-2 Zone 69



Assessment Diagram Contra Costa County LL-2 Zone 70



Assessment Diagram Contra Costa County LL-2 Zone 71



LEGEND

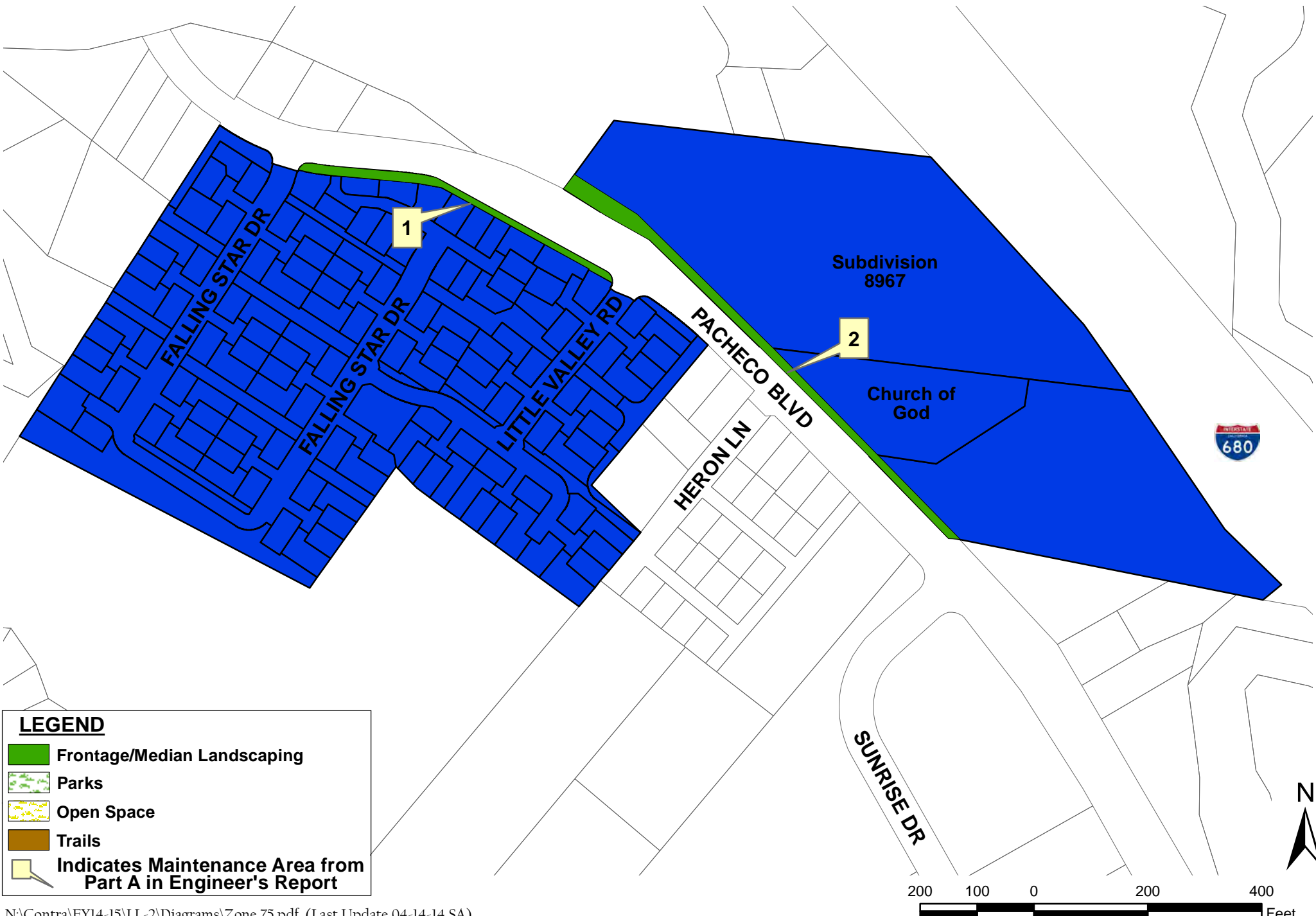
- Frontage/Median Landscaping
- Parks
- Open Space
- Trails
- Indicates Maintenance Area from Part A in Engineer's Report



Assessment Diagram Contra Costa County LL-2 Zone 74



Assessment Diagram Contra Costa County LL-2 Zone 75



LEGEND

- Frontage/Median Landscaping
- Parks
- Open Space
- Trails
- Indicates Maintenance Area from Part A in Engineer's Report