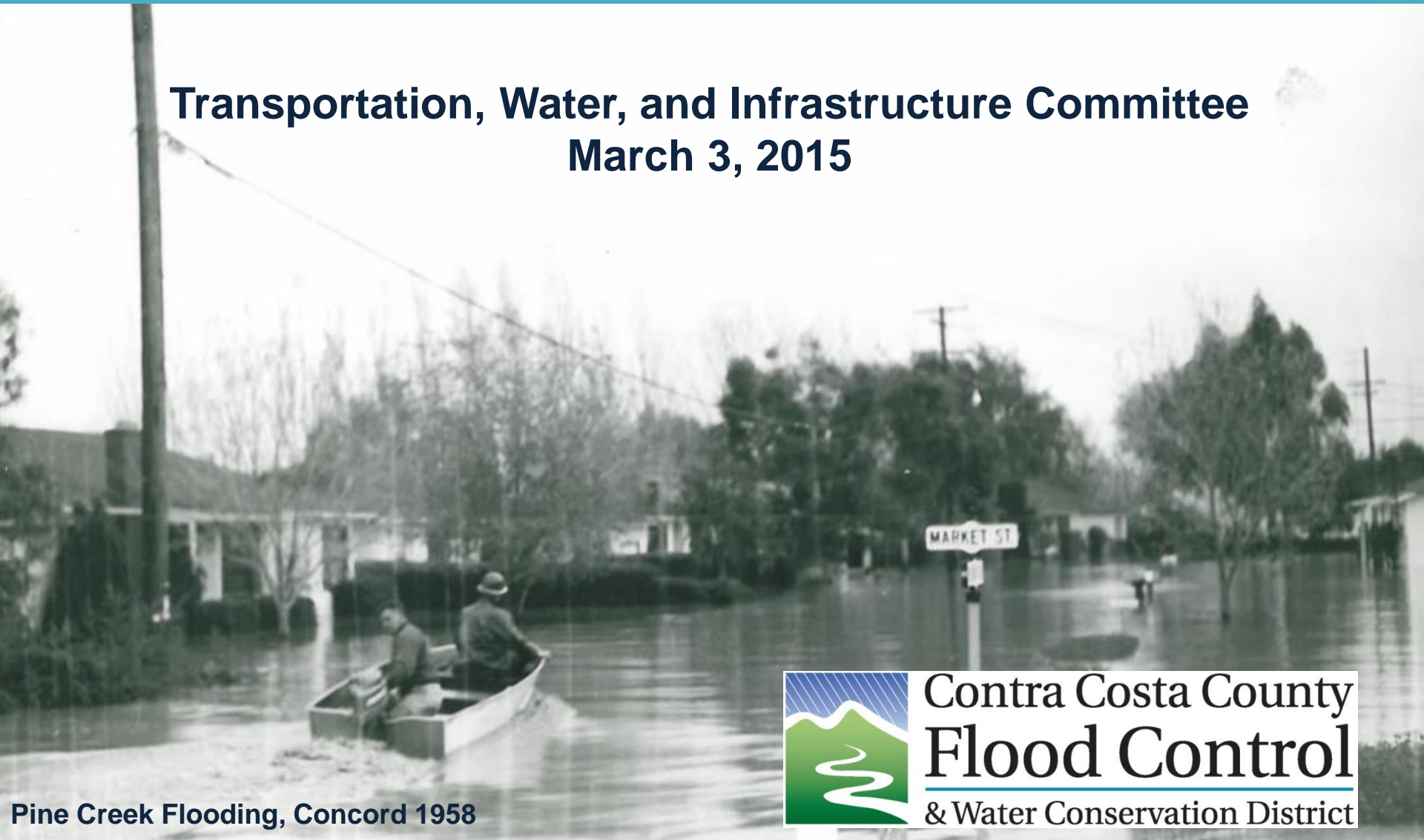


Stormwater Funding Needs Report

**Transportation, Water, and Infrastructure Committee
March 3, 2015**



**Contra Costa County
Flood Control**
& Water Conservation District

Pine Creek Flooding, Concord 1958

Presentation Outline

- Stormwater Facilities
- Funding Sources
- Funding Status
- Funding Needs
- Recommended Actions



**San Ramon Creek at Livorna Rd,
Alamo January 2006**

Contra Costa County Stormwater Facilities

- **Regional Flood Protection**
- Community Drainage
- Road System
- Private Drainage



**San Ramon Creek Bypass at Civic Park,
Walnut Creek 2006**

Contra Costa County Stormwater Facilities

- Regional Flood Protection
- Community Drainage
- Road System
- Private Drainage



Contra Costa County Stormwater Facilities

- Regional Flood Protection
- Community Drainage
- **Road System**
- Private Drainage

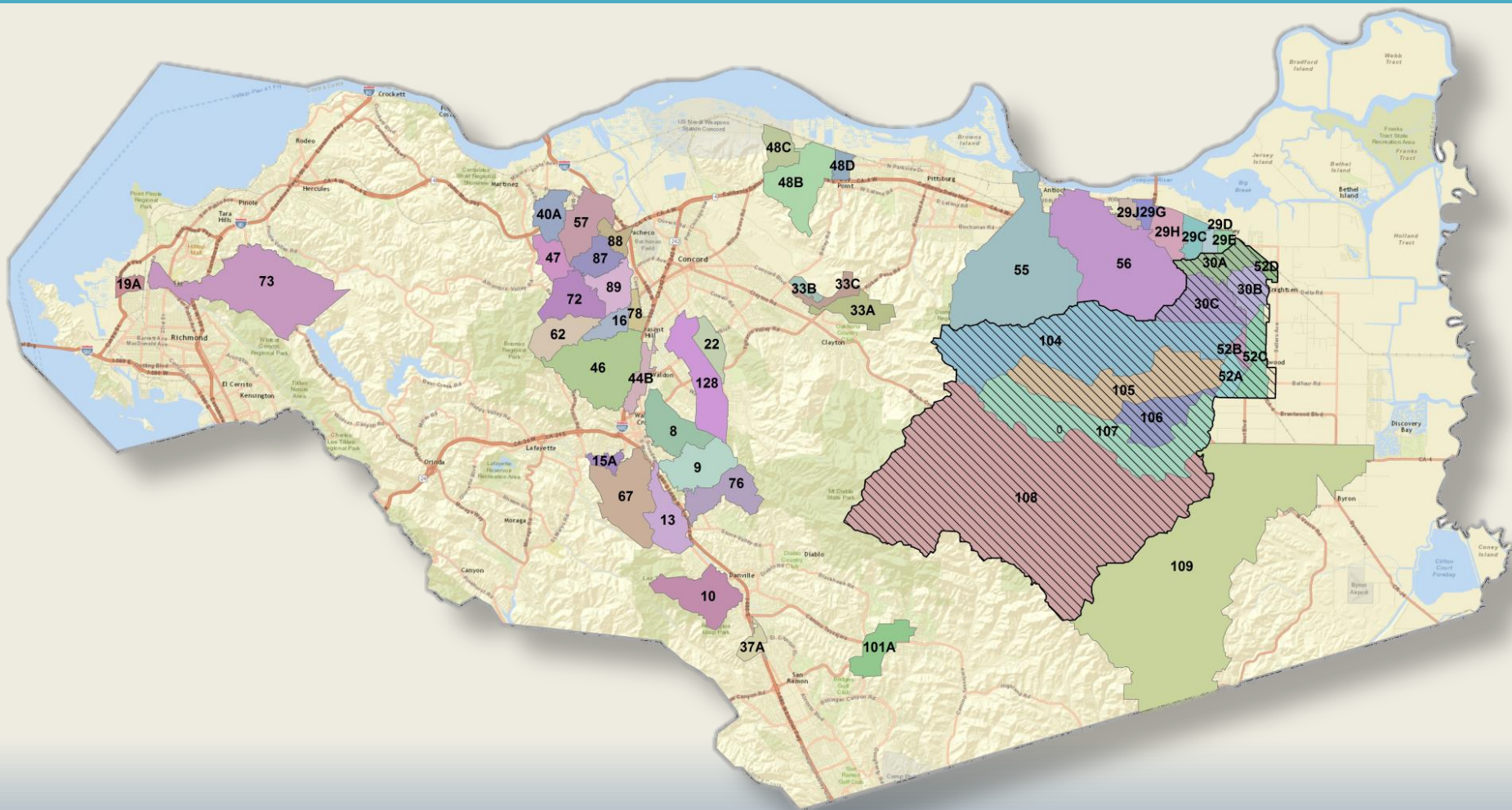


Contra Costa County Stormwater Facilities

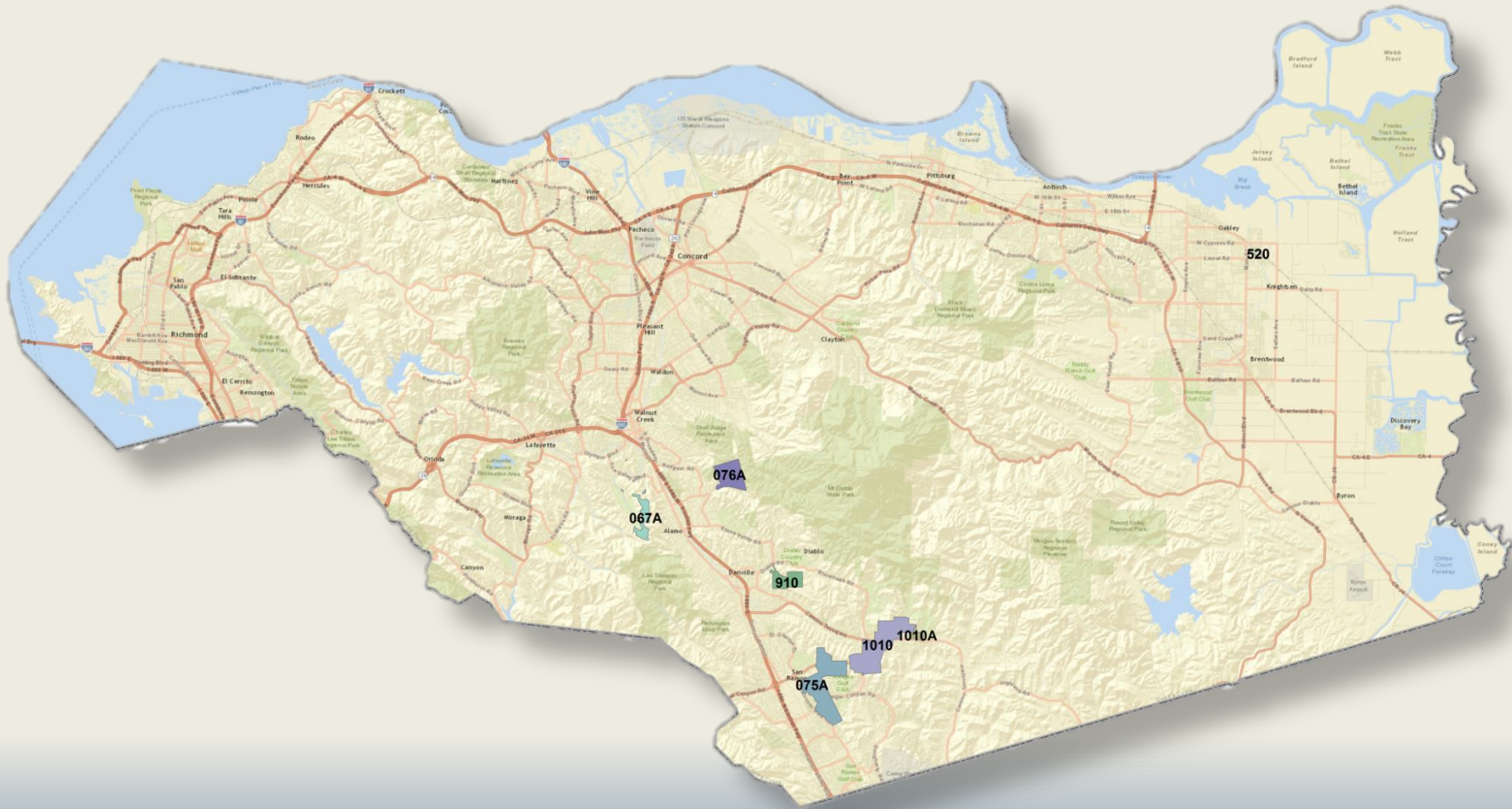
- Regional Flood Protection
- Community Drainage
- Road System
- **Private Drainage**



Drainage Areas

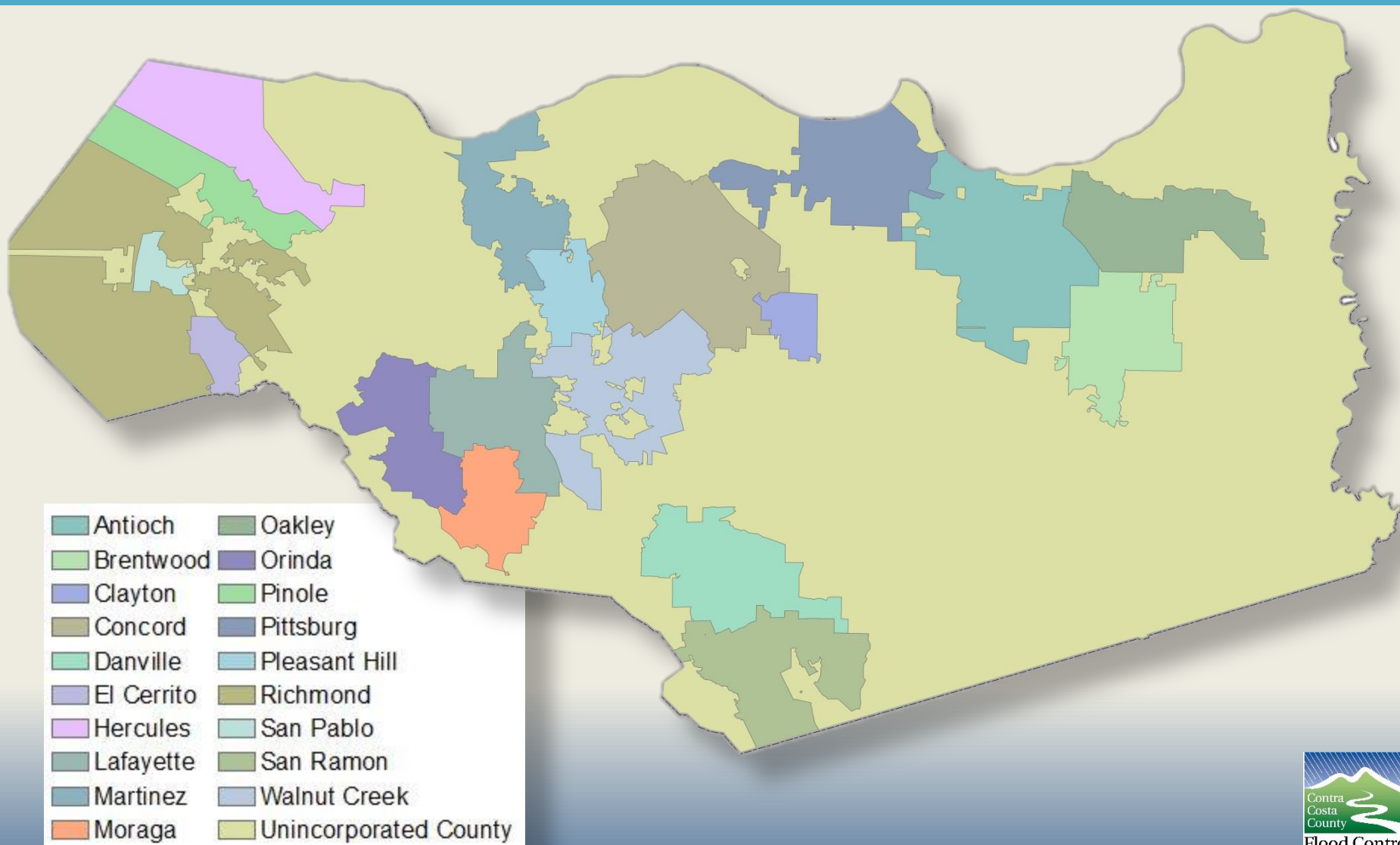


Drainage Area Benefit Assessments

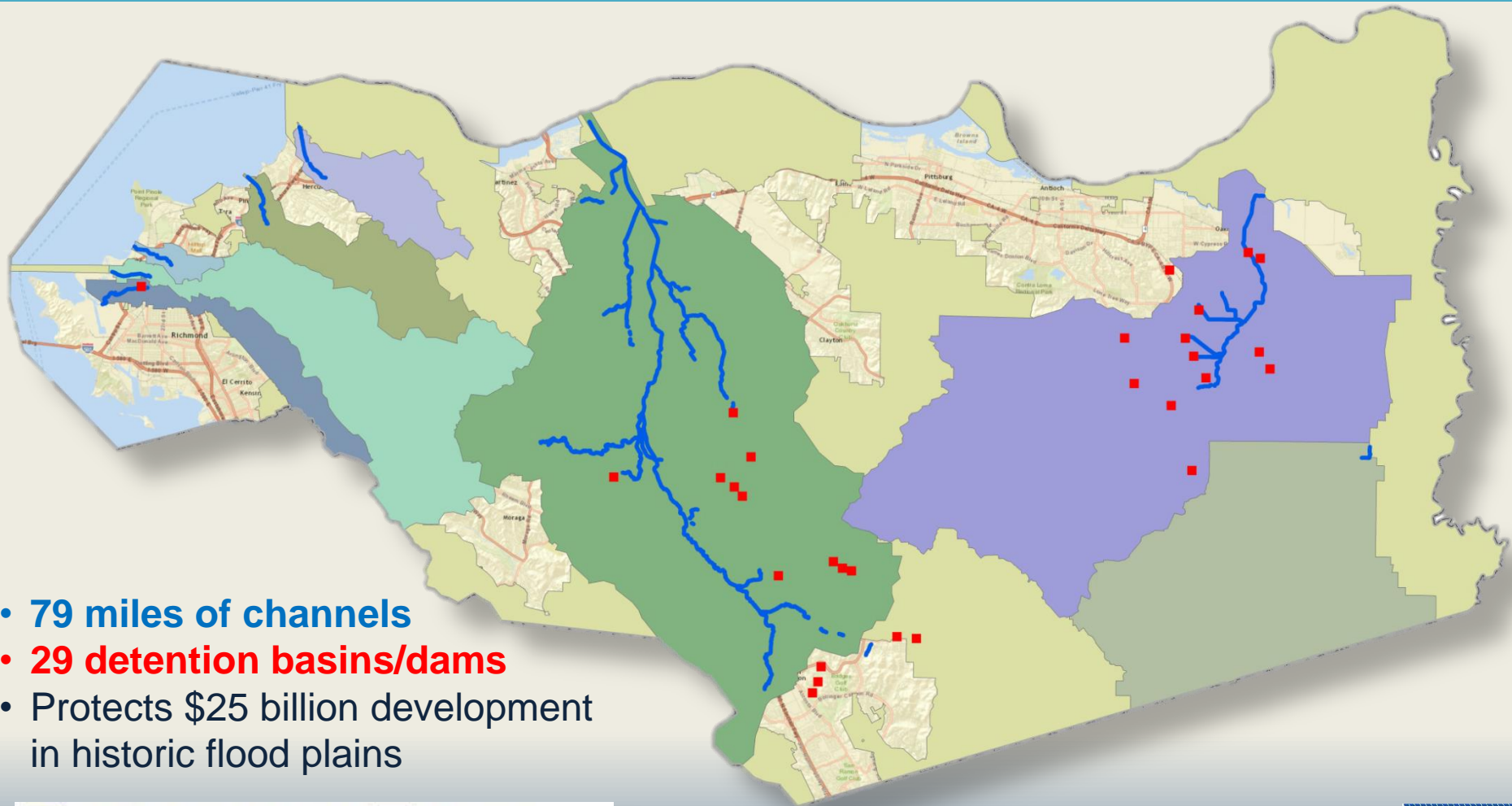


7 Drainage Area Benefit Assessments

Community Drainage



Regional Flood Protection

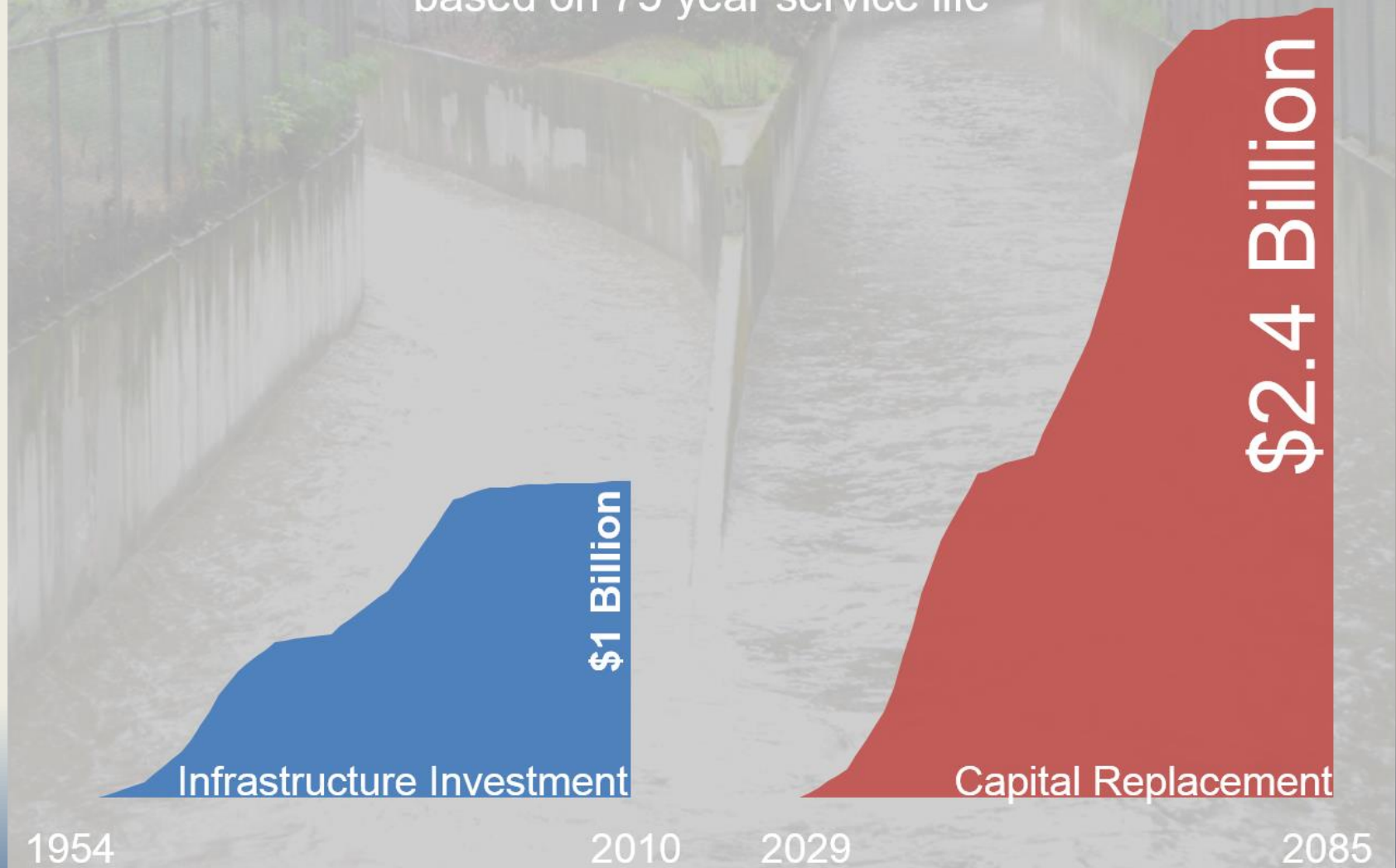


- **79 miles of channels**
- **29 detention basins/dams**
- Protects \$25 billion development in historic flood plains

Marsh Creek Watershed Facilities	Rodeo Creek
Kellogg Creek	Pinole Creek
Walnut Creek Watershed Facilities	Rheem Creek
San Pablo Creek	County-wide Facilities
Wildcat Creek	

Capital Replacement Need

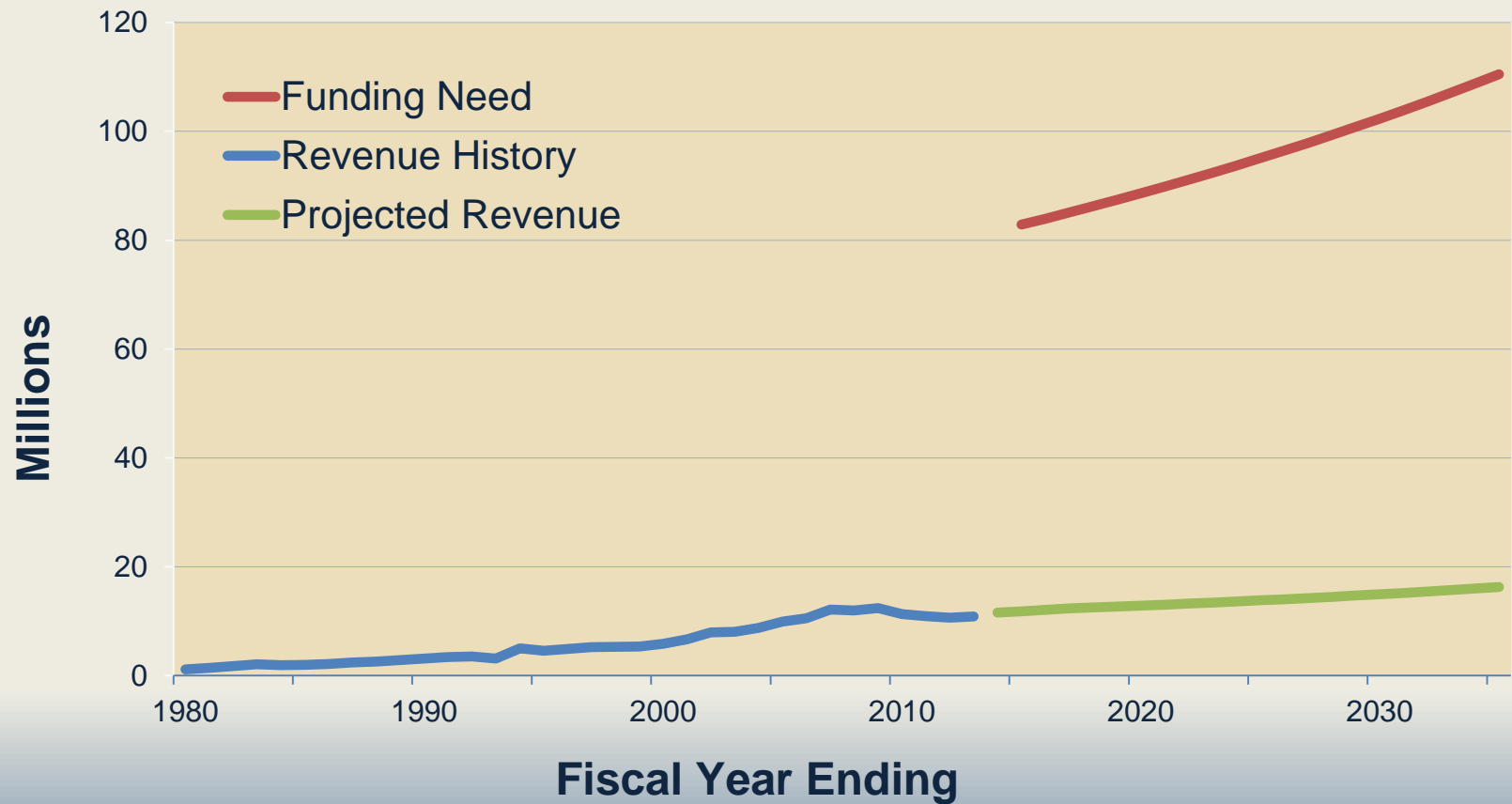
based on 75 year service life



Annual Funding Needs by Entity

Drainage Entity	Maintenance	Capital Improvement	Capital Replacement	Total Need	Current Revenue	Percent of Need
Marsh Creek Watershed Facilities	\$ 800,000	\$ 6,503,429	\$ 1,150,162	\$ 8,453,591	\$ 1,376,994	16%
Kellogg Creek	\$ 70,000	\$ 44,905	\$ 98,551	\$ 213,457	\$ -	0%
Walnut Creek Watershed Facilities	\$ 16,000,000	\$ 8,513,571	\$ 22,926,853	\$ 47,440,424	\$ 4,318,998	9%
San Pablo Creek	\$ 600,000	\$ 15,000	\$ 840,233	\$ 1,455,233	\$ -	0%
Wildcat Creek	\$ 800,000	\$ 2,987,571	\$ 1,120,310	\$ 4,907,882	\$ 69,376	1%
Rodeo Creek	\$ 350,000	\$ 1,630,571	\$ 501,825	\$ 2,482,397	\$ 35,819	1%
Pinole Creek	\$ 100,000	\$ 892,857	\$ 139,161	\$ 1,132,018	\$ -	0%
Rheem Creek	\$ 85,000	\$ -	\$ 120,576	\$ 205,576	\$ 12,690	6%
County-wide Drainage Facilities	\$ 5,000,000	\$ -	\$ 6,905,145	\$ 11,905,145	\$ 3,076,000	26%
Subtotals	\$ 23,805,000	\$ 20,587,905	\$ 33,802,817	\$ 78,195,722	\$ 8,889,877	11%
Regional Planning	\$ 0	\$ 0	\$ 0	\$ 4,660,000	\$ 2,602,932	56%
Totals	\$ 23,805,000	\$ 20,587,905	\$ 33,802,817	\$ 82,855,722	\$ 11,492,809	14%

Annual Funding Needs



Stormwater Funding on Property Tax Bill



RUSSELL V. WATTS

CONTRA COSTA COUNTY TREASURER-TAX COLLECTOR
ROOM 100, 625 COURT STREET, MARTINEZ, CA 94553
TELEPHONE: (925) 957-5280 FAX: (925) 957-2898

2012-2013

FISCAL YEAR JULY 1, 2012 TO JUNE 30, 2013

SECURED PROPERTY TAX BILL

INTERNET COPY

PROPERTY ADDRESS

HACIENDA DR, WALNUT CREEK CA

ASSESSEE AS OF JANUARY 1, 2012

MAILING ADDRESS

APN 179- [REDACTED]

ADDRESS INFORMATION NOT AVAILABLE ON LINE

THE ACCURACY OF THIS BILL MAY BE AFFECTED BY
PENDING PAYMENTS AND CORRECTIONS

ASSESSMENT INFORMATION

LAND IMPROVEMENTS
PERSONAL PROP
GROSS VALUE
EXEMPTIONS \$7,000

NET VALUE AS OF JAN 1, 2012 [REDACTED]

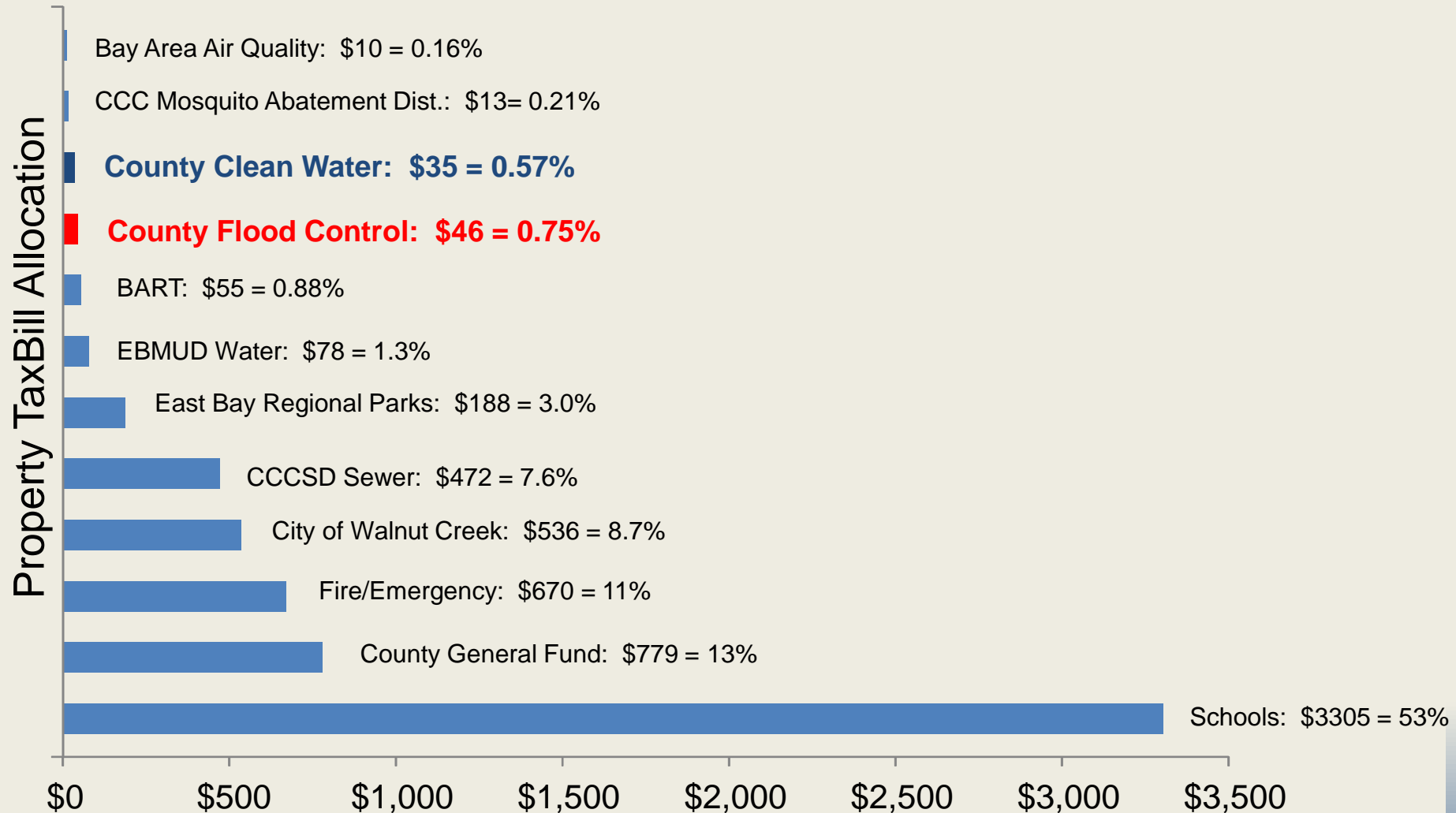
SPECIAL MESSAGES

PARCEL NUMBER	BILL NUMBER	CORTAC AGENCY	TAX RATE AREA	ISSUE DATE	TYPE	
179-132-004-5 0	2012-181989		09001	09/07/2012	ORIGINAL	
SPECIAL TAXES & ASSESSMENTS			AD VALOREM TAXES & ASSESSMENTS			
DESCRIPTION	CODE	INFORMATION	AMOUNT	DESCRIPTION	RATE	AMOUNT
MOSQUITO & VECTOR	DV	(925) 867-3400	\$4.74	1%COUNTYWIDE TAX	1.0000	\$7,479.47
EMERGENCY MED B	DY	(925) 646-4690	\$10.00	BART	0.0043	\$32.16
CCCSO SEWER CHG	GE	(925) 229-7115	\$371.00	EAST BAY REG PK BD	0.0051	\$38.14
WC SCHOOL PRCL TAX	HO	(800) 273-5167	\$82.00	ACALANES BOND 97	0.0112	\$83.77
FED STORMWATER A16	IS	(925) 313-2376	\$35.00	ACALANES BOND 88	0.0105	\$78.54
ACL MEAS G&A PCLTX	JF	(925) 280-3908	\$301.00	ACALANES BOND 2002	0.0116	\$86.76
EASTBAY TRAILS LLD	KA	(800) 676-7516	\$5.44	WLNT CREEK BOND 95	0.0127	\$94.99
				WC ELEM BOND 2002	0.0114	\$85.26
				COMM COLL 2002 BND	0.0047	\$35.16
				COMM COLL 2006 BND	0.0040	\$29.91
				TOTAL AD VALOREM TAXES	1.0755	\$8,044.16
				ADD: SPECIAL TAXES & ASSESSMENTS		\$809.18
				DELINQUENT PENALTY		\$0.00
				DELINQUENT COST		\$0.00
				LESS: PAYMENTS RECEIVED		\$8,853.34
TOTAL SPECIAL TAXES & ASSESSMENTS			\$809.18	TOTAL AMOUNT DUE		\$0.00

**County Flood Control:
\$46 = 0.75%**

My boss's tax bill, then adjusted to \$500,000 value

Stormwater Funding on Property Tax Bill



Percent of Entire Tax Bill - Based on \$500,000 home in Walnut Creek

Local Funding Ability

Drainage Entity	Fiscal Year 13-14			Projected Amounts	
	Taxed Parcels	Revenue	Average tax/parcel	Funding need	Average cost/parcel
Marsh Creek Watershed Facilities	26,842	\$1,376,994	\$51	\$8,453,591	\$315
Kellogg Creek	694	\$0	\$0	\$213,457	\$308
Walnut Creek Watershed Facilities	115,666	\$4,318,998	\$37	\$47,440,424	\$410
San Pablo Creek	14,867	\$0	\$0	\$1,455,233	\$98
Wildcat Creek	4,783	\$69,376	\$15	\$4,907,882	\$1,026
Rodeo Creek	2,875	\$35,819	\$12	\$2,482,397	\$863
Pinole Creek	5,182	\$0	\$0	\$1,132,018	\$218
Rheem Creek	3,684	\$12,690	\$3	\$205,576	\$56
County-wide Drainage Facilities	52,926	\$3,076,000	\$58	\$11,905,145	\$225
FCD General Fund Parcels	335,292	\$2,602,932	\$8	\$4,660,000	\$14
Totals	562,811	\$11,492,809	\$20	\$82,855,722	\$147

Stormwater Funding Initiative

- Goal: “Utility” status for stormwater similar to water and wastewater
- Exempt stormwater agencies from voter requirements like a water district or wastewater district
- Need a Constitutional Amendment approved by the legislature
- California voters will decide whether to grant an exemption for stormwater

Stormwater Funding Initiative Process

- Legislation begins early 2015
- AB 1362 Gordon & Wolk
- Statewide polling
- Aiming for 2016 election
- Coalition established to push Initiative forward
- Need campaign to support ballot measure



Two Step Process

Step One: Ballot measure approves exemption, grants same authority to local government as water and wastewater districts to fund operations.

Step Two: Each local government agency/area, if desired, goes through a political process to:

- Establish a “utility”
- Determine scope and level of services
- Determine rates
- Determine rate structure

Stormwater Funding Initiative

- It is not a **TAX!**
- Clarification of Proposition 218 exemptions
- Recognizes stormwater as a basic service
- Completes adequate funding for our total water portfolio



Priorities Moving Forward

- Continue Engagement in Statewide Stormwater Funding Initiative
- Continue Conditions Assessments
- Research other Funding Options
- Continue Communication and Outreach Plan



Pinole Creek

Goal is Sustainable Funding