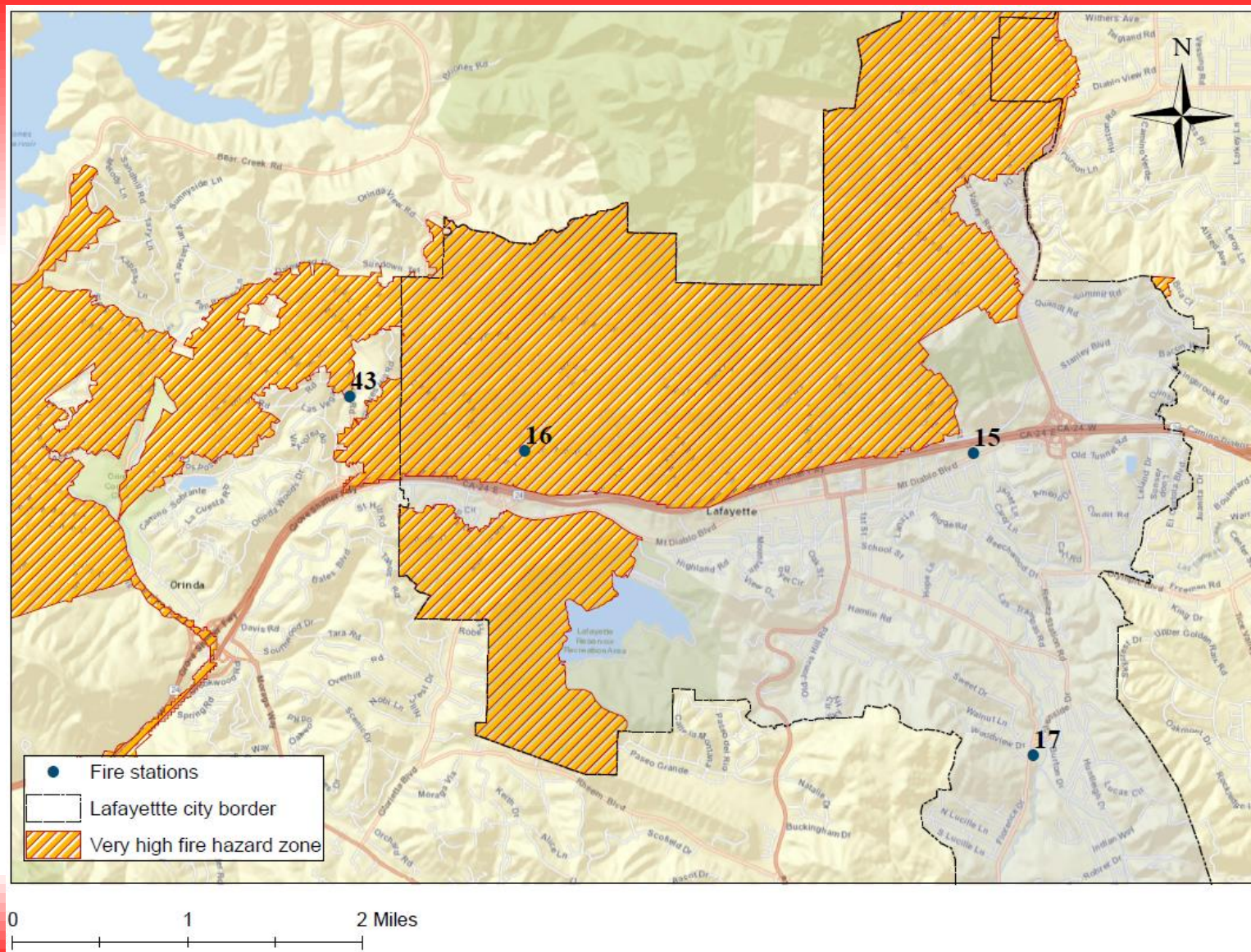




Contra Costa County Fire Protection District

A Contemporary Review of Fire Stations 16, 43, and 46

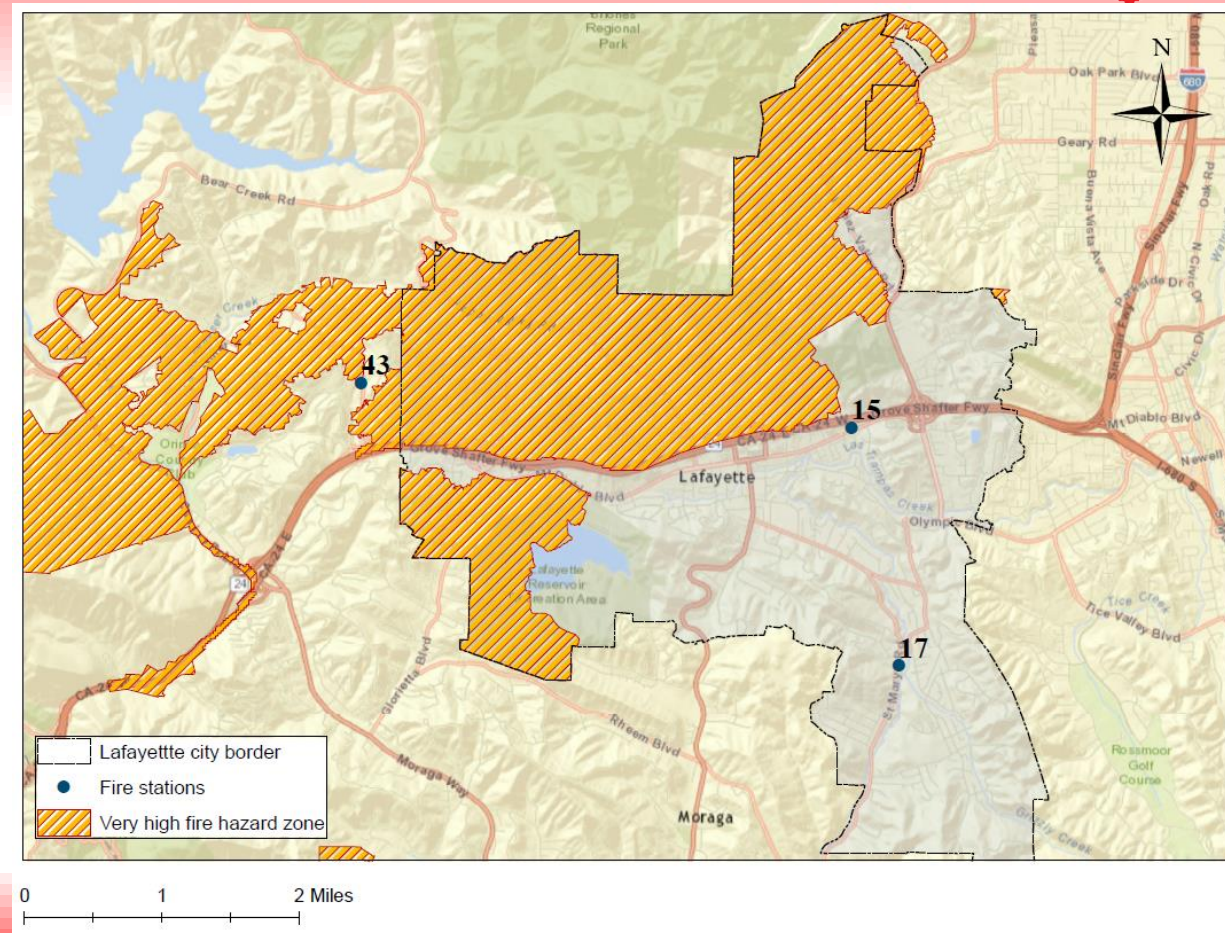
Western Lafayette





Background

- In 2011 Fire Station 16 in western Lafayette was closed due to building issues. Engine 16 moved to Fire Station 15 in central Lafayette.
- In early 2013, for budgetary reasons, Fire Station 16 was shuttered and Engine 16 was de-staffed.
- As a result, ConFire began utilizing aid from MOFD to try and maintain the shortest response times to western Lafayette.
 - Average first-due response times increased by approximately 30 seconds



Fire Station 46 Concept

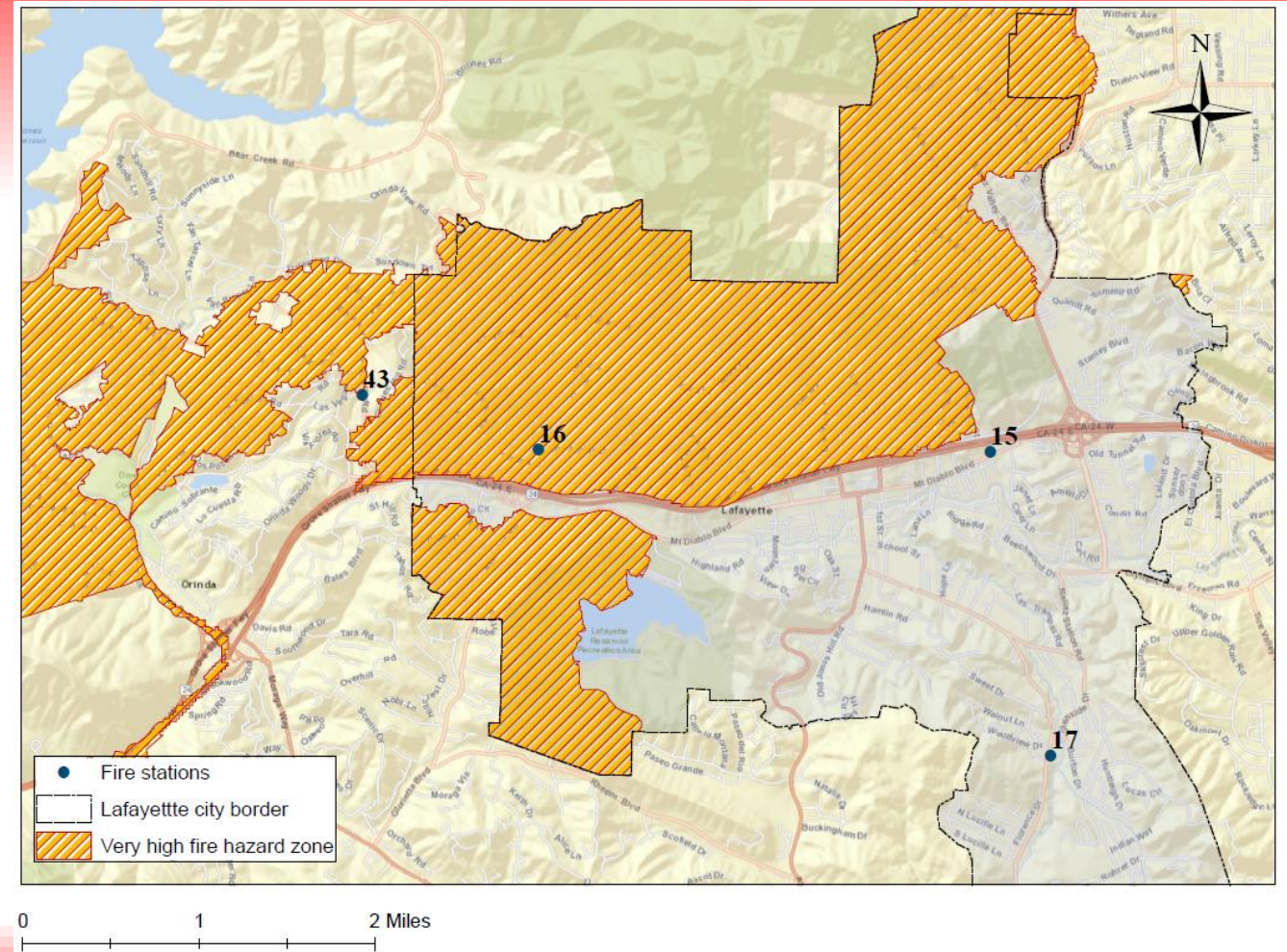
- Chiefs Bradley and Richter first discussed the concept in 2009
- Chiefs Bradley and Louder had additional discussions in 2012
 - Property purchased in 2013 under Chief Bradley's leadership
- Based on low call volume in each response area and proximity of stations
 - CON Engine 16 ran approximately 280 incidents per year in its first due area
 - MOFD Engine 43 ran approximately 160 calls per year in its first due area
- Primary advantage is the financial savings each agency could achieve
 - Savings are estimated at \$1.5 million annually to each agency
- Response times would improve in some of Station 16's response area

Fire Station 46 Concept, cont'd

- In late 2013 direction from Board of Directors to pursue the concept with no commitment for construction
 - No operational costs for 5 years – condition of agreement
- Contract negotiations have been difficult
 - Concept is simple on the surface – 50/50 split
 - The difficulties are in the details
 - How the resource will be used
 - Usage percentage by each agency
 - Non-emergency use
 - Unanticipated costs
 - Cultural and procedural differences
 - Concerns by some community members of being served by a jointly operated fire station

Other Considerations

- Total call volume for each engine
 - E16 total call volume \approx 800 calls per year
 - E43 total call volume \approx 650 call per year
- Must consider non-emergency use of resources including public education, training, and system enhancement
- Very High Fire Hazard Severity Zone
- Effective Work Force Time





Current Situation

- Another option
 - Re-open Fire Station 16
- ConFire is much stronger, healthier, efficient
 - Have an operational plan in place
 - Awarded the ambulance contract
 - Squads not as pivotal to operations
 - FS16 facility can be restored to service
 - Revenues have increased
 - Have more budgetary flexibility



Financial Considerations

FS46

- Capital investment is \$6 million
 - \$3 million in available capital
 - \$3 million would be financed
- \$1.5 million dollar operational costs per year

FS16

- Capital investment is <\$1 Million
 - \$3 million in available capital
 - Leaves capital available for needs in other communities
- Net operational costs of \$800,000 per year
 - Increase over current budgeted amount for two-person squad

Questions

- What happens when the economy fails again?
- How does this fit into the District's operational plan?
- Why open FS16 before the other stations that are closed?
- What other communities would benefit by reopening FS16?
- Other questions?
- Recommendation