

Index Map: P-6 Zones and Sheriff's Patrol Beats in Contra Costa County as of July 2014

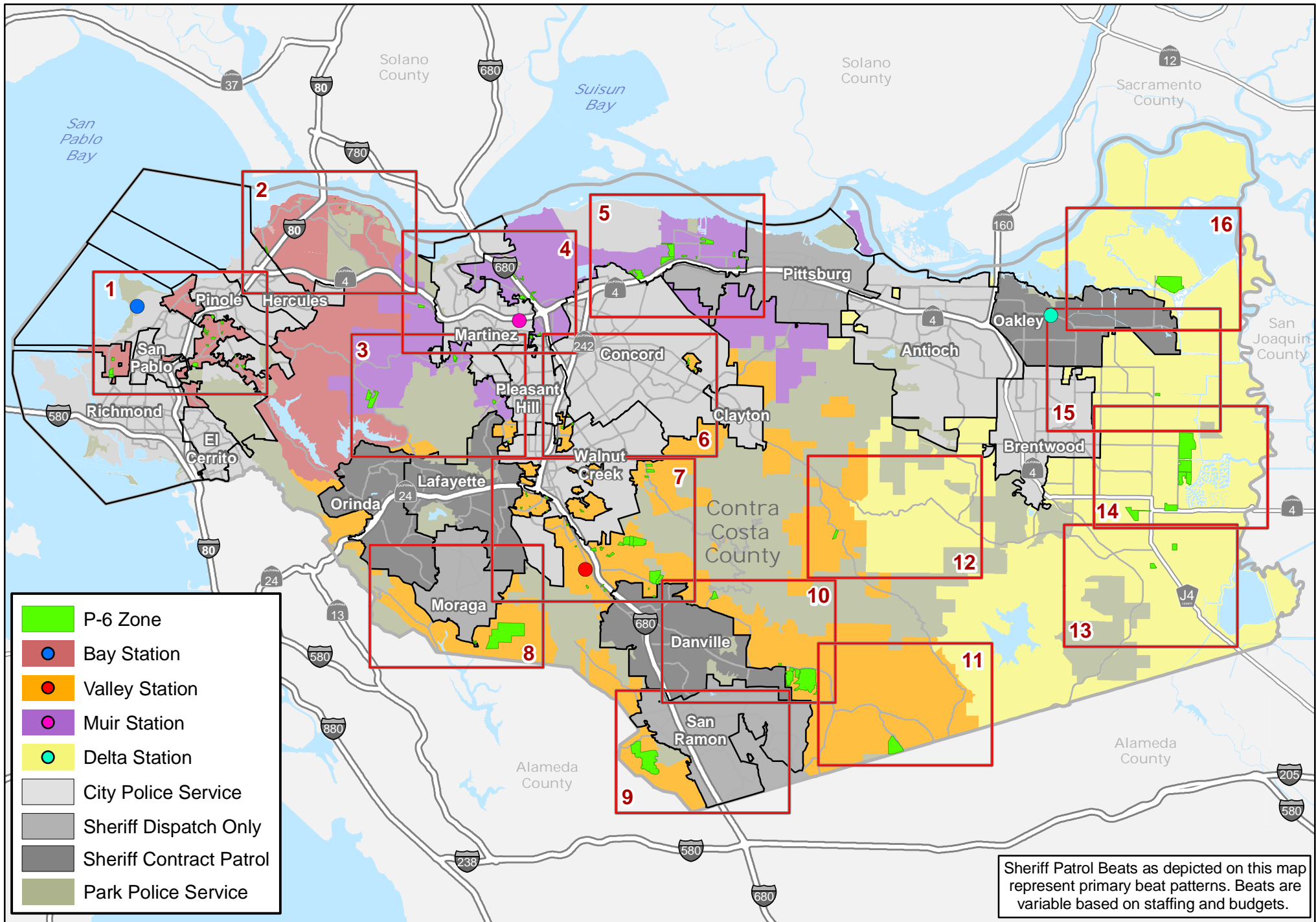


Fig 1: Sheriff Beats and P-6 Zones (3000-3112) in North Richmond, El Sobrante Area as of July 2014

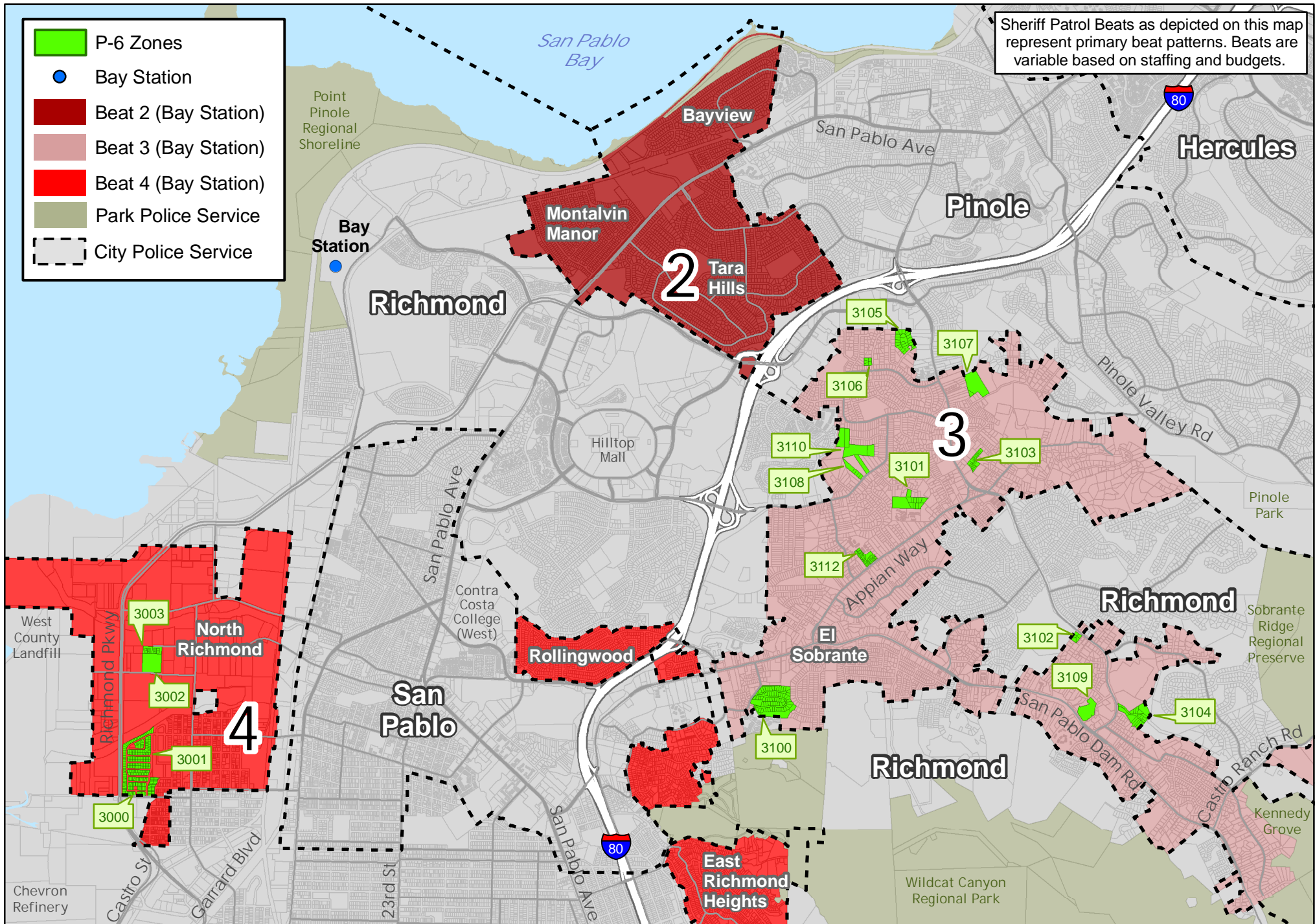


Fig 2: Sheriff Beats and P-6 Zones (2500-2503) in Rodeo, Crockett Area as of July 2014

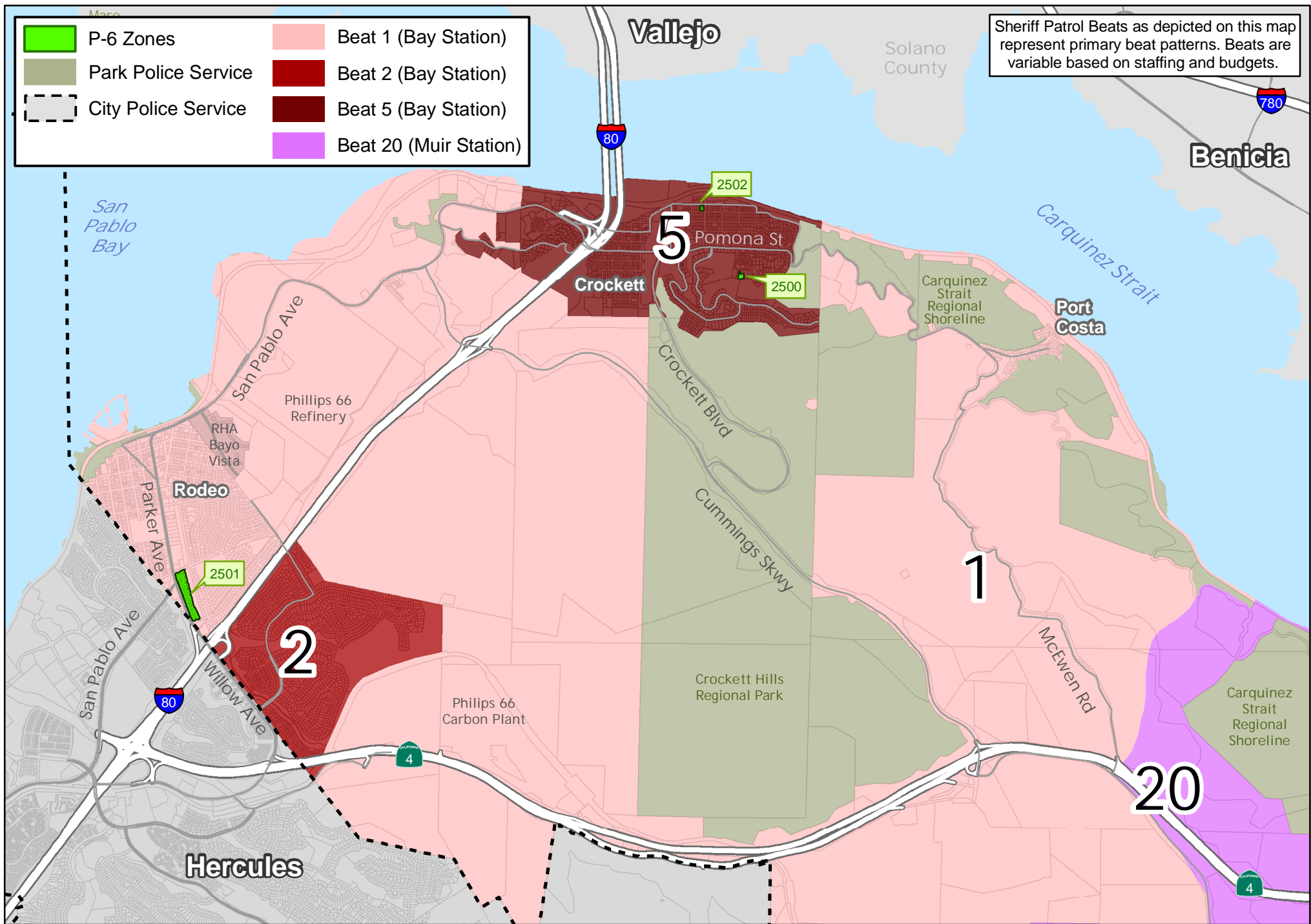


Fig 3: Sheriff Beats and P-6 Zones (1503, 2602, 2701-2800, 2902, 2903) in Alhambra Valley, Briones, Reliez Valley Area as of July 2014

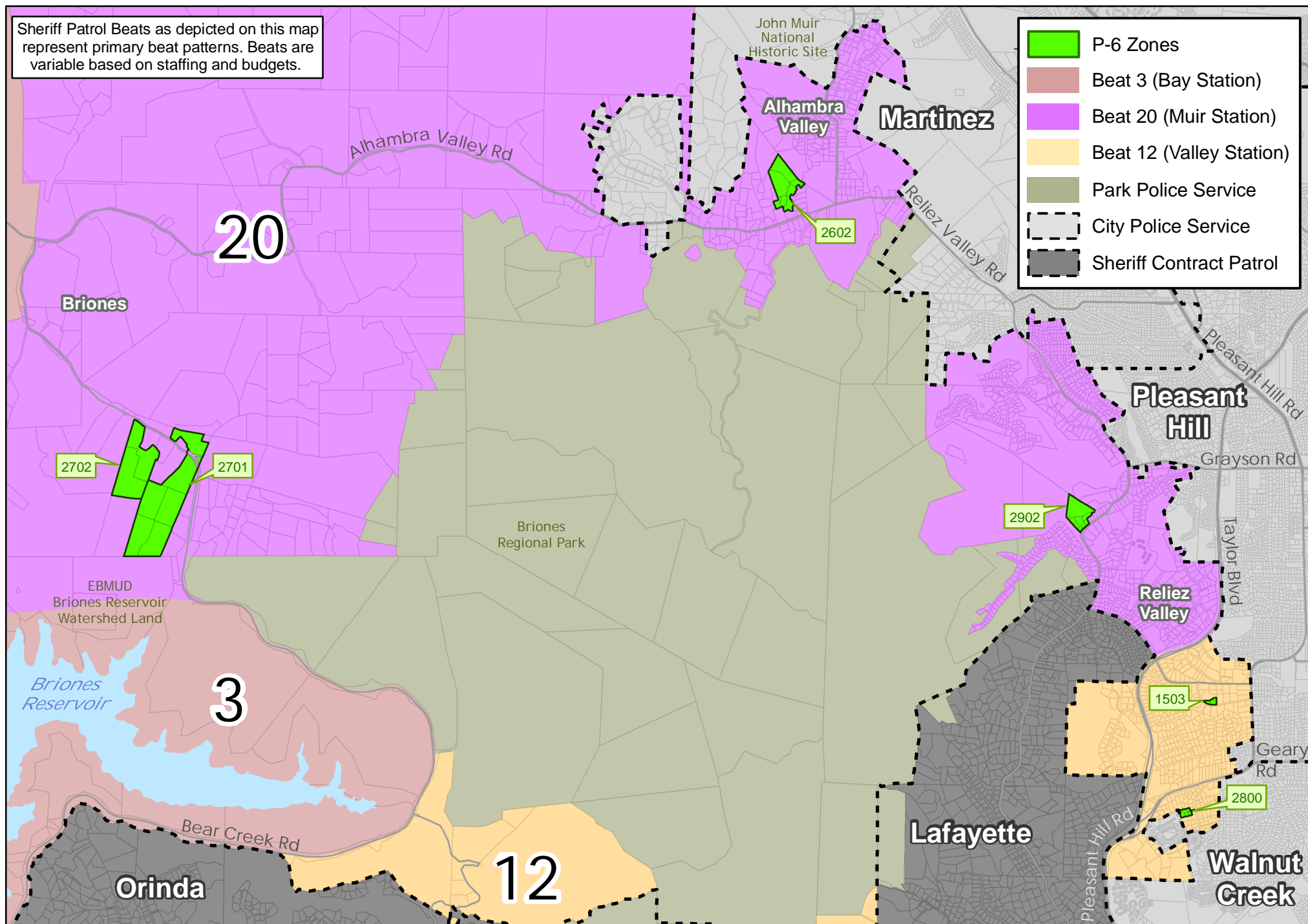


Fig 4: Sheriff Beats and P-6 Zones (1000-1006) in Martinez, Mt View, Vine Hill, Pacheco Area as of July 2014

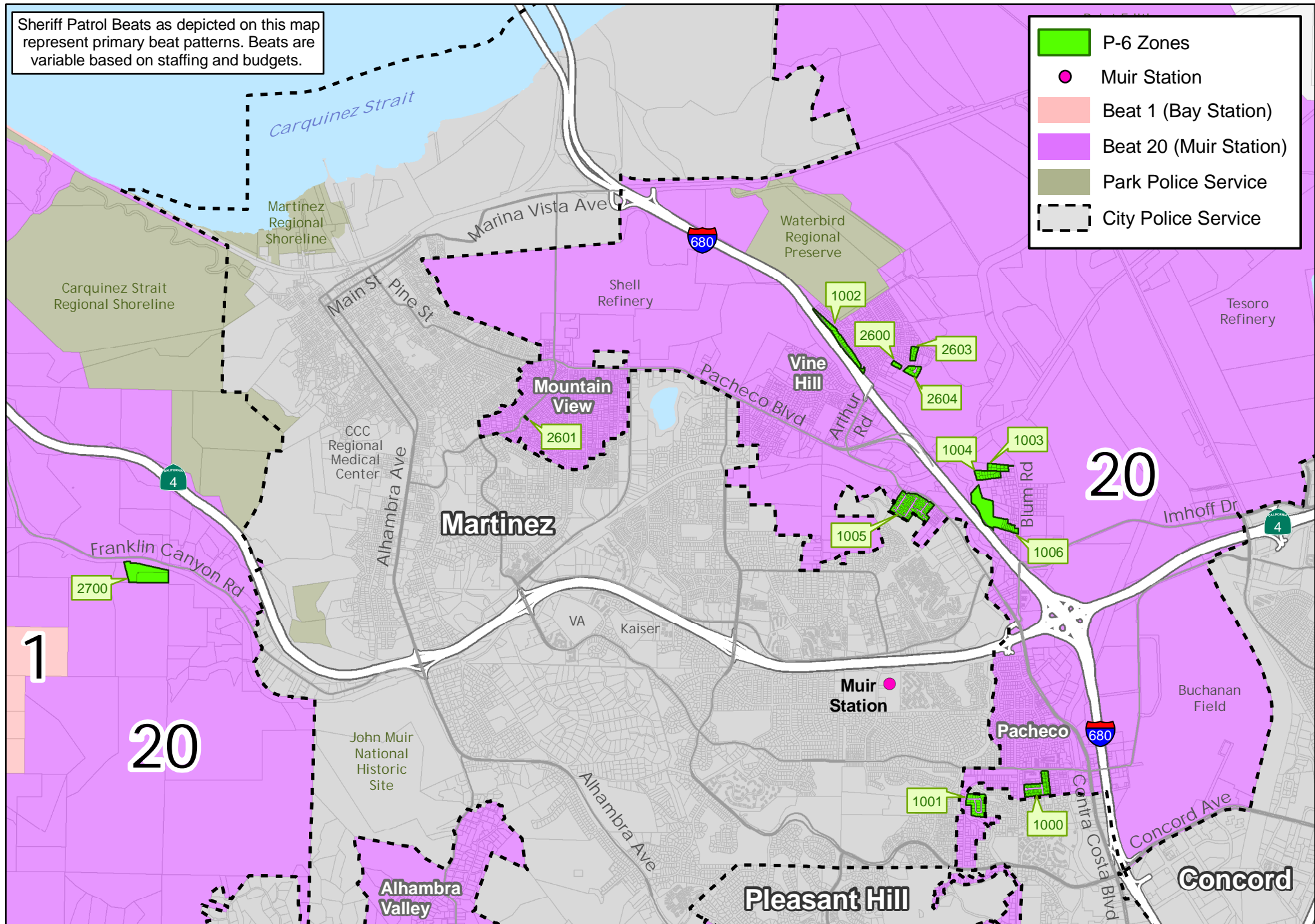


Fig 5: Sheriff Beats and P-6 Zones (0200-0211, 0900) in Clyde, Bay Point Area as of July 2014

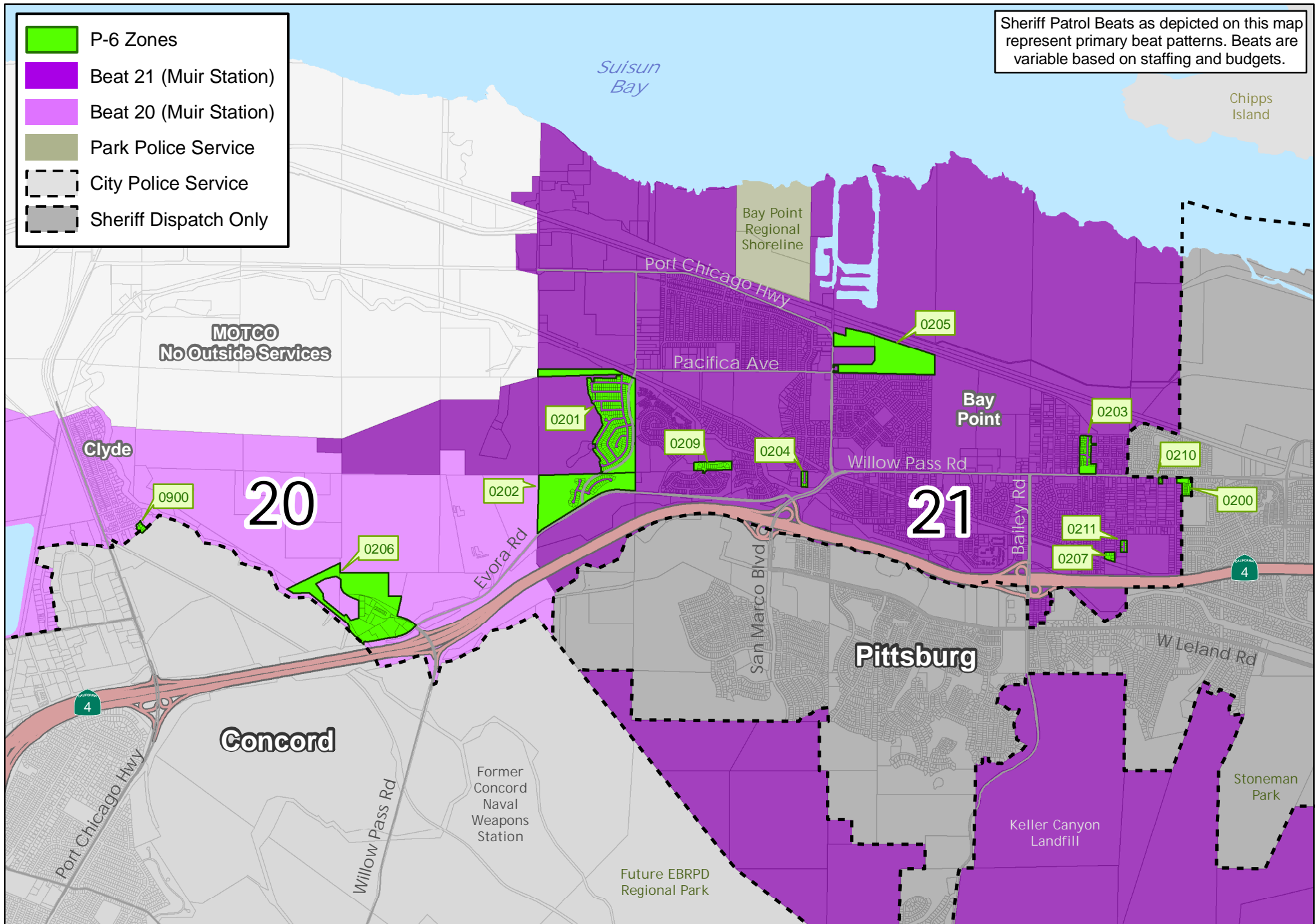


Fig 6: Sheriff Beats and P-6 Zones (1100-1202, 1510, 2801) in Contra Costa Centre, Concord Area as of July 2014

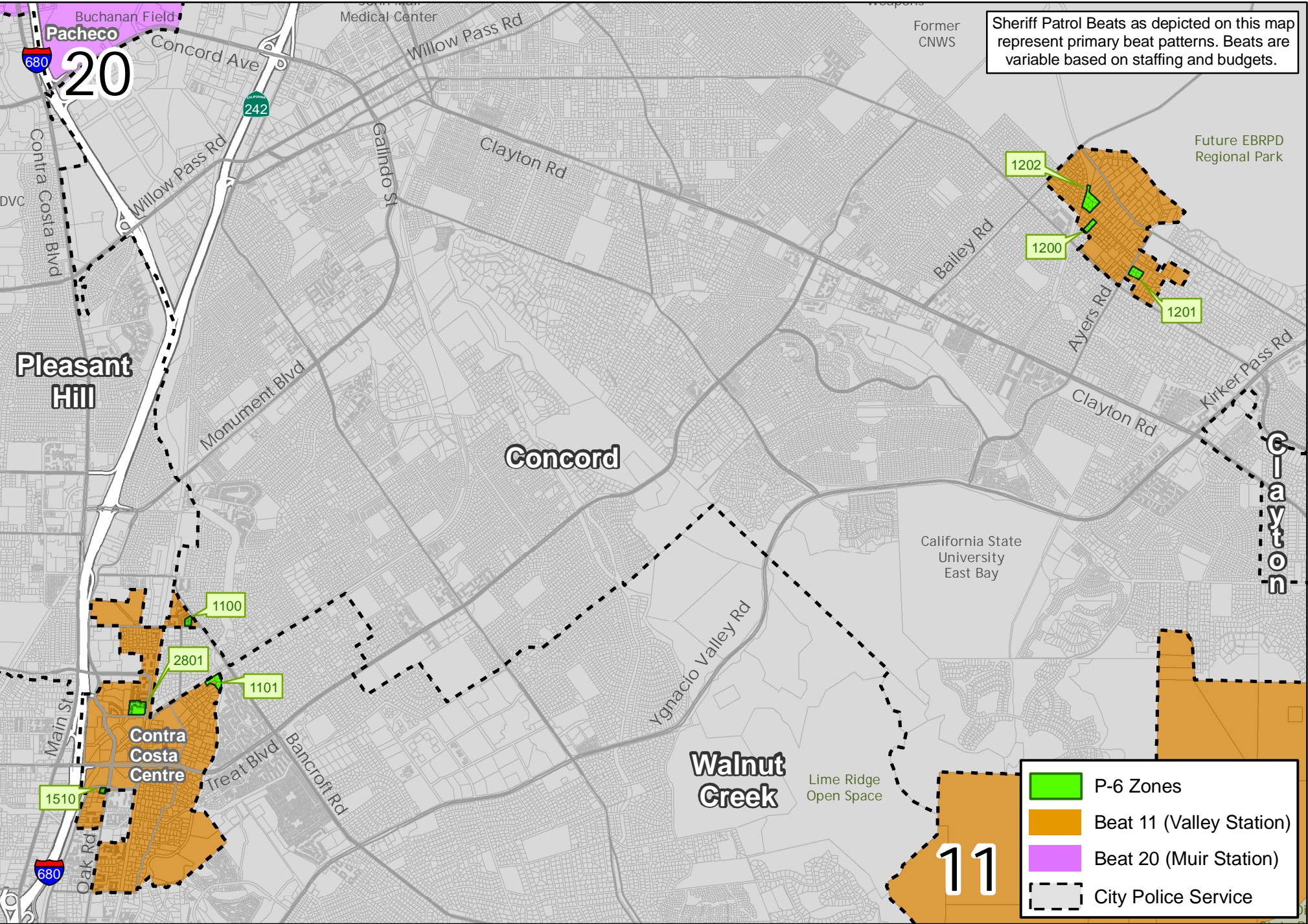


Fig 7: Sheriff Beats and P-6 Zones (1500-1502, 1504-1509, 1511-1616, 1802-1804) in Alamo, North Gate, Saranap Area as of July 2014

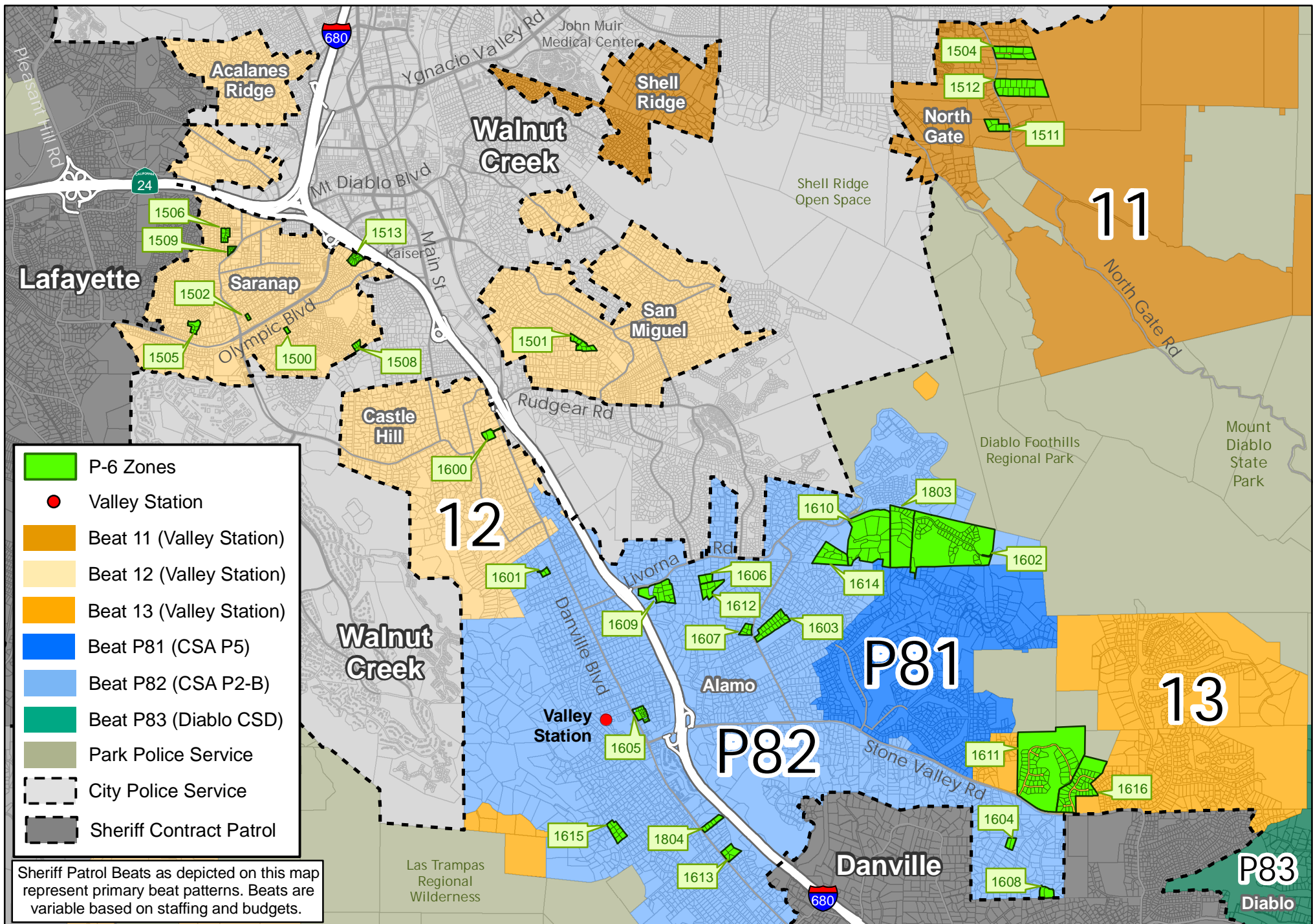


Fig 8: Sheriff Beats and P-6 Zones (2900-2901) in Canyon, Moraga Area as of July 2014

Sheriff Patrol Beats as depicted on this map represent primary beat patterns. Beats are variable based on staffing and budgets.

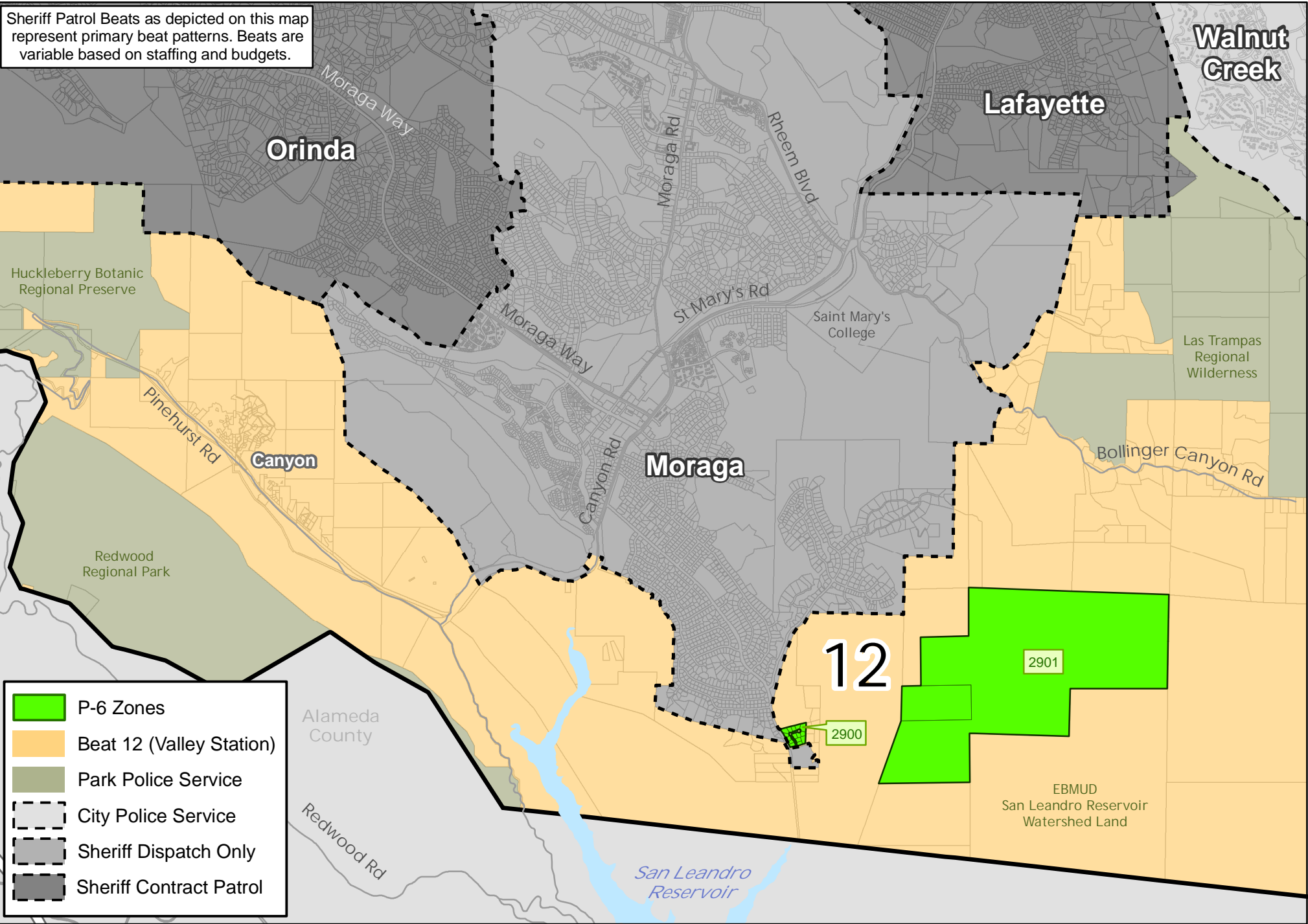


Fig 9: Sheriff Beats and P-6 Zone 1700 in Norris Canyon, San Ramon Area as of July 2014

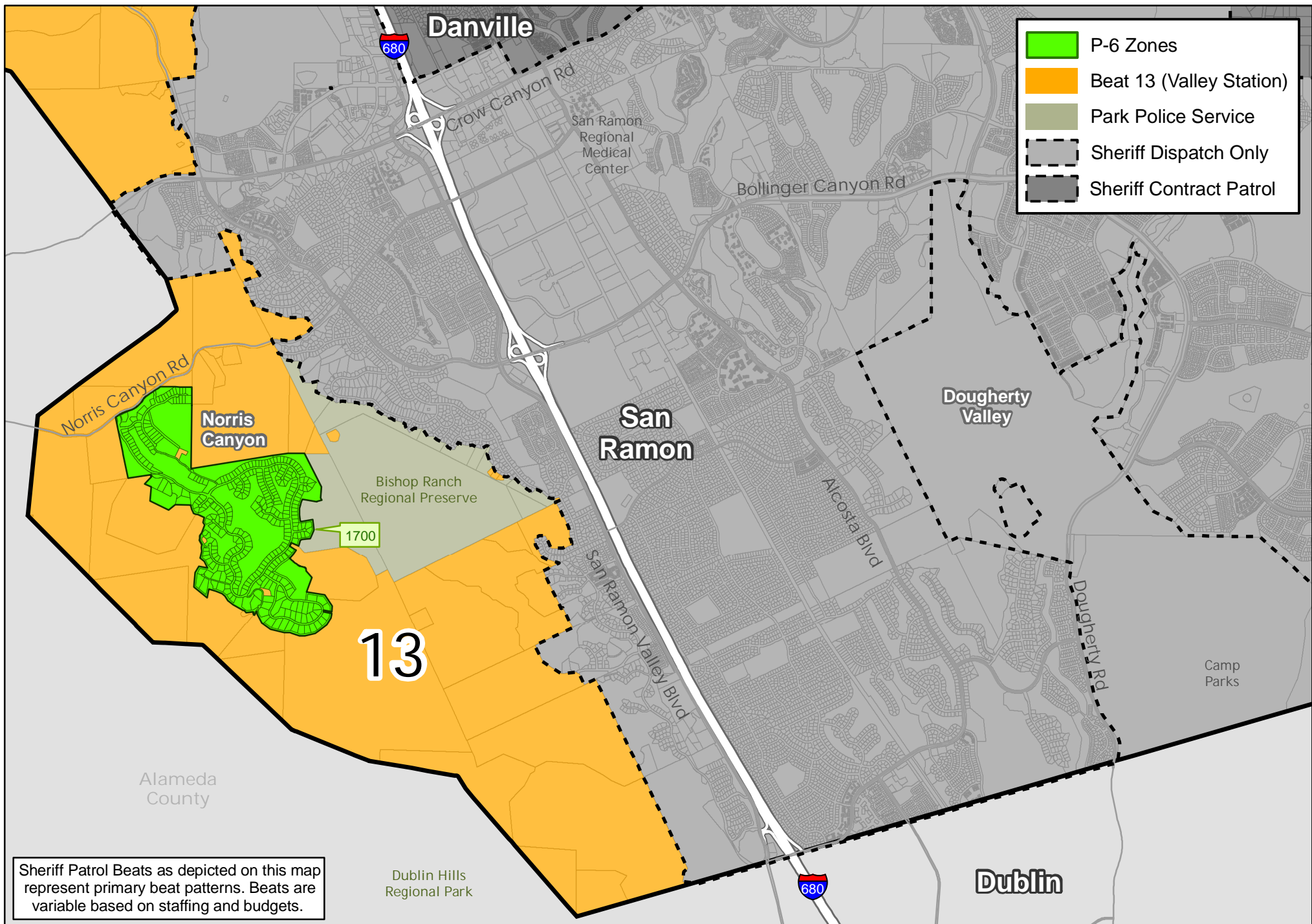


Fig 10: Sheriff Beats and P-6 Zones (1800-1801, 2200-2203) in Diablo, Blackhawk, Camino Tassajara Area as of July 2014

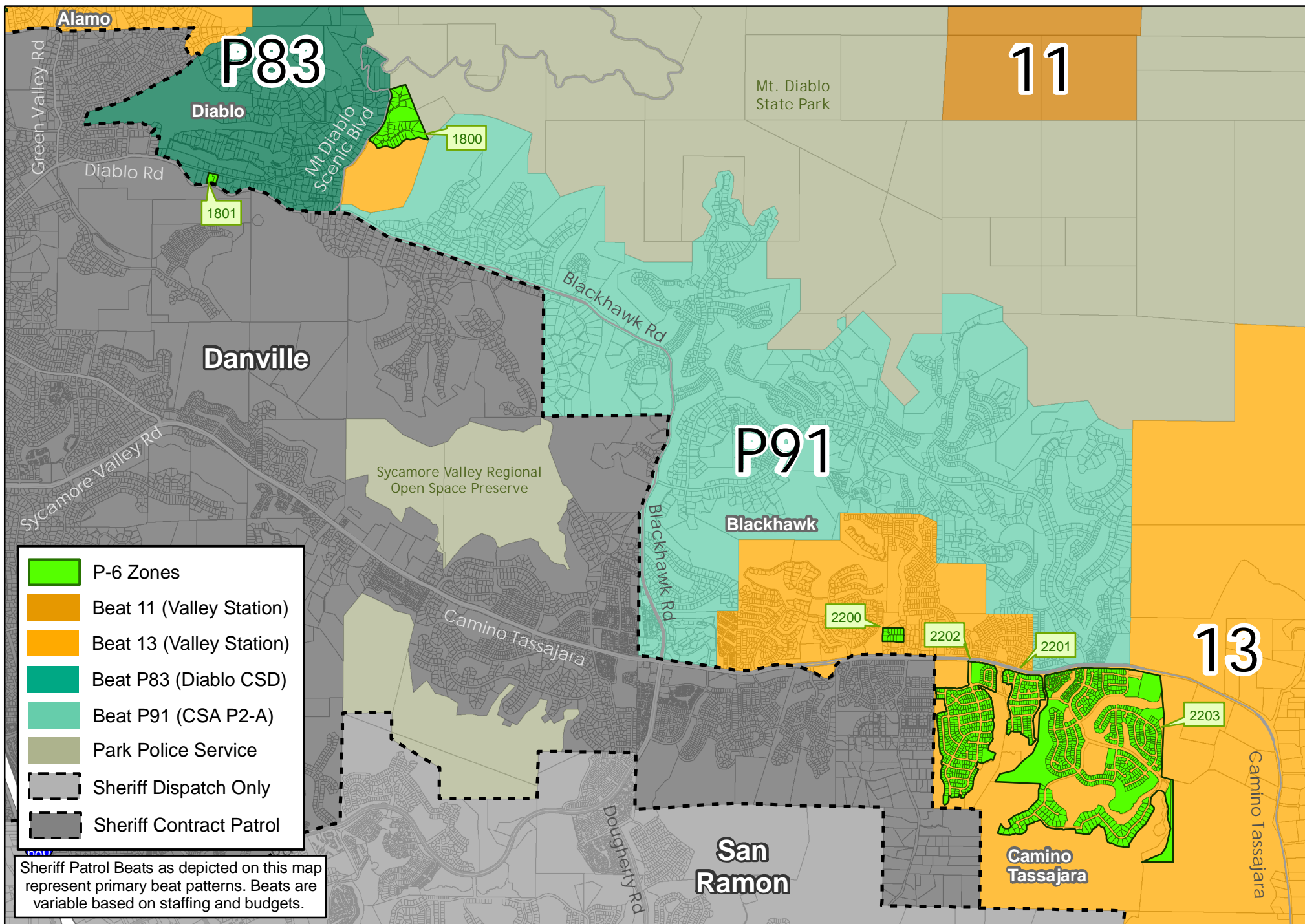


Fig 11: Sheriff Beats and P-6 Zone 2300 in Tassajara Valley Area as of July 2014

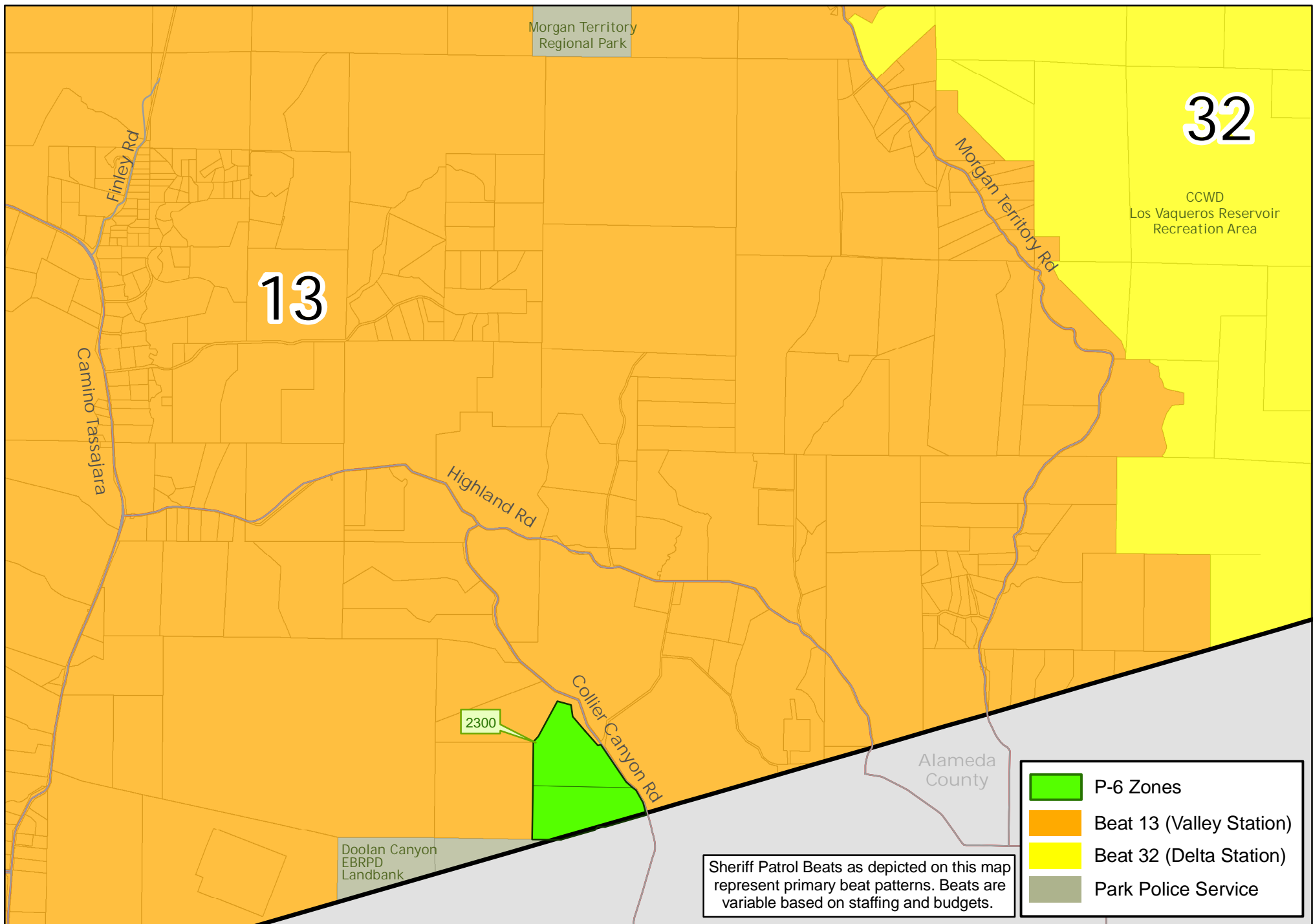


Fig 12: Sheriff Beats and P-6 Zone 2000 in Morgan Territory, Marsh Creek Rd Area as of July 2014

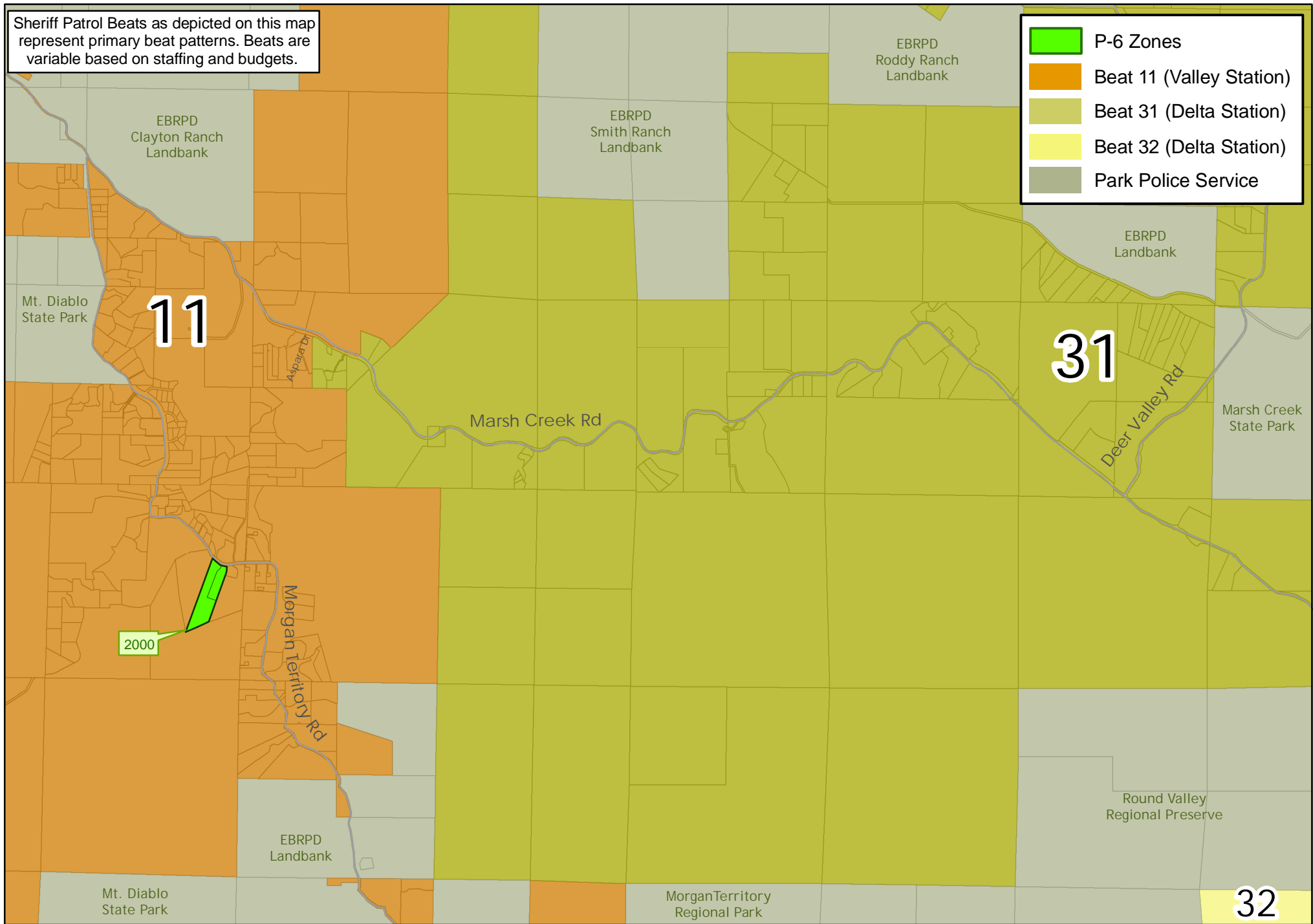


Fig 13: Sheriff Beats and P-6 Zones (0701-0702) in Byron Area as of July 2014

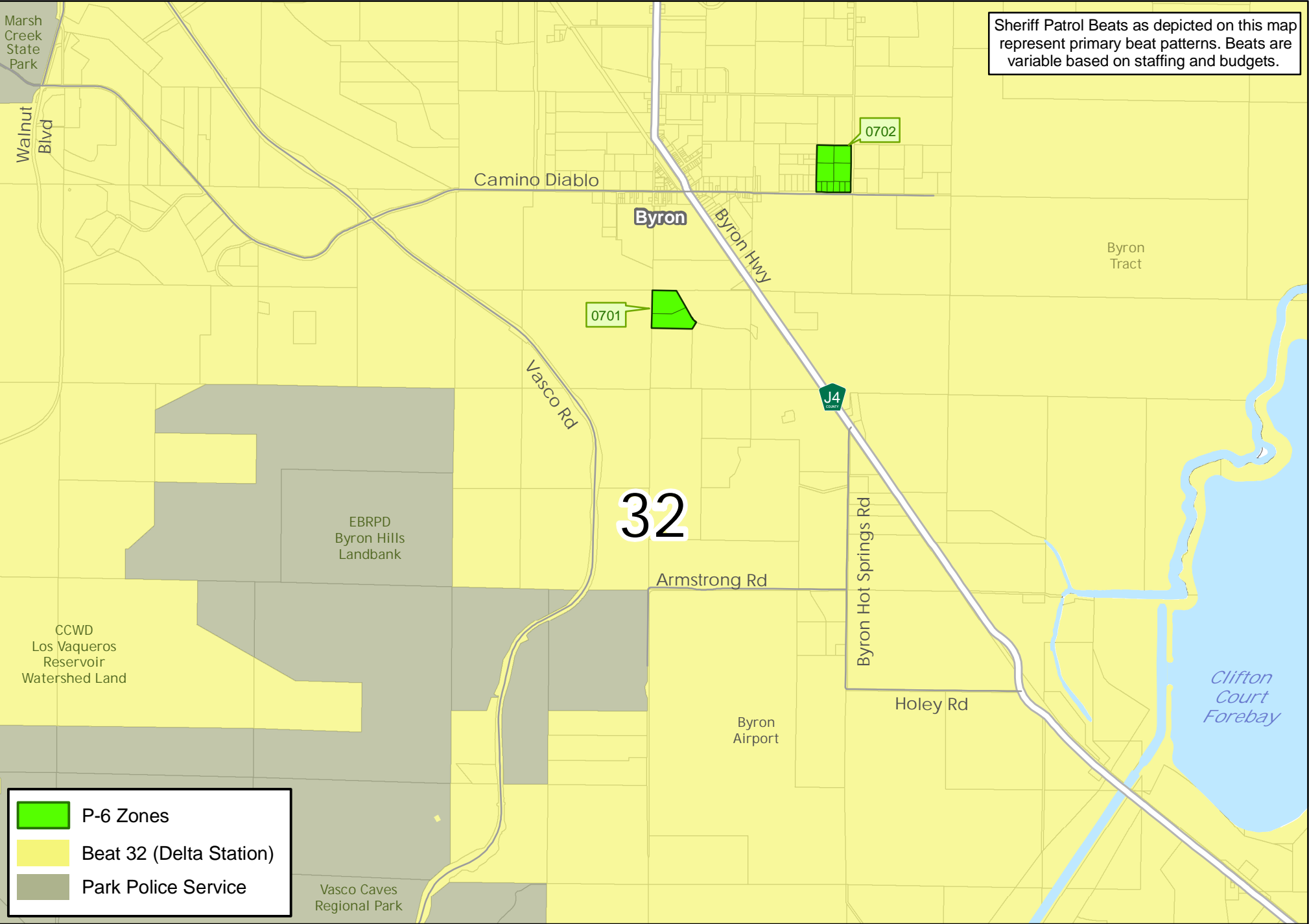


Fig 14: Sheriff Beats and P-6 Zones (0500-0700) in Discovery Bay Area as of July 2014

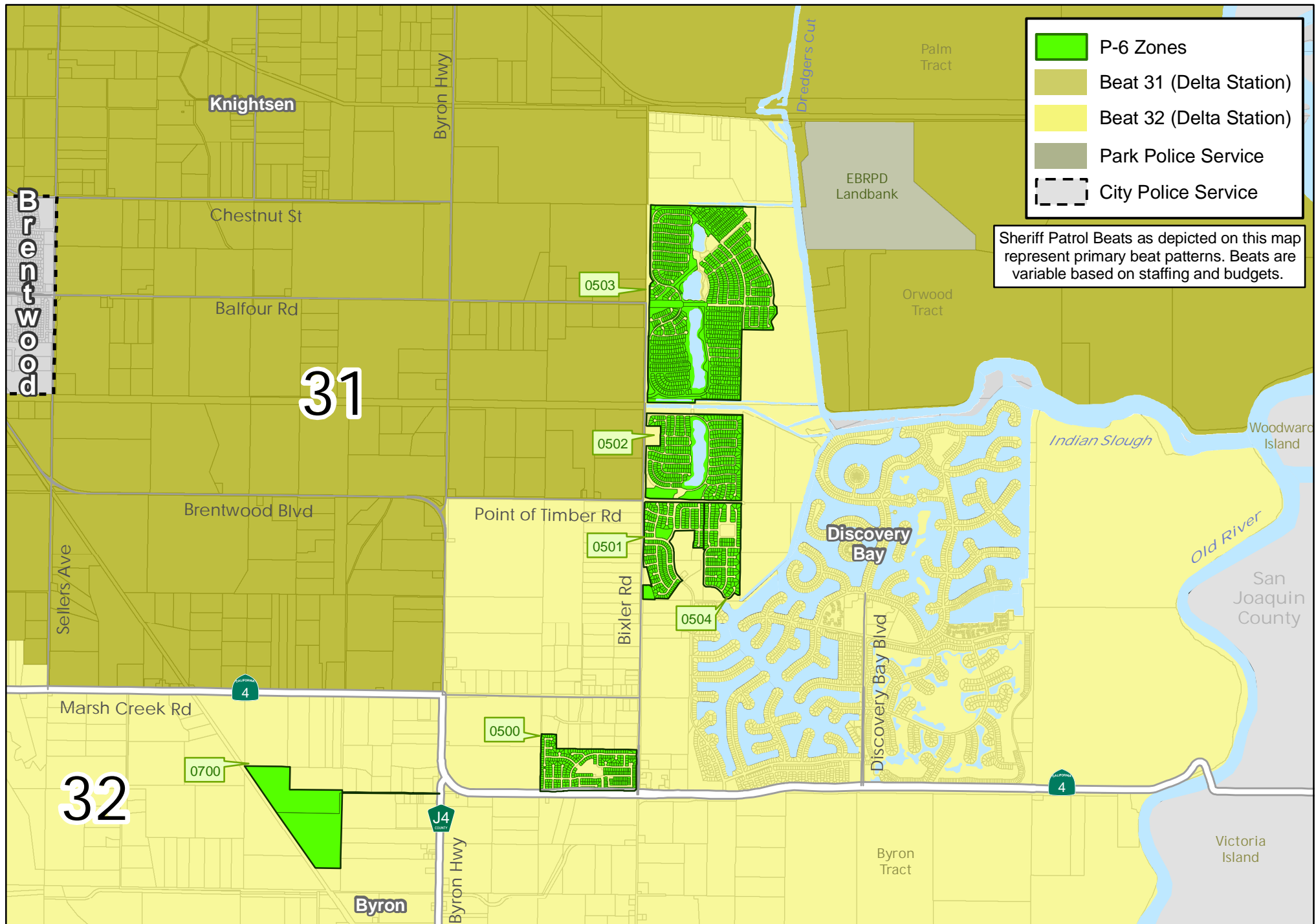


Fig 15: Sheriff Beats and P-6 Zone 0400 in Knightsen Area as of July 2014

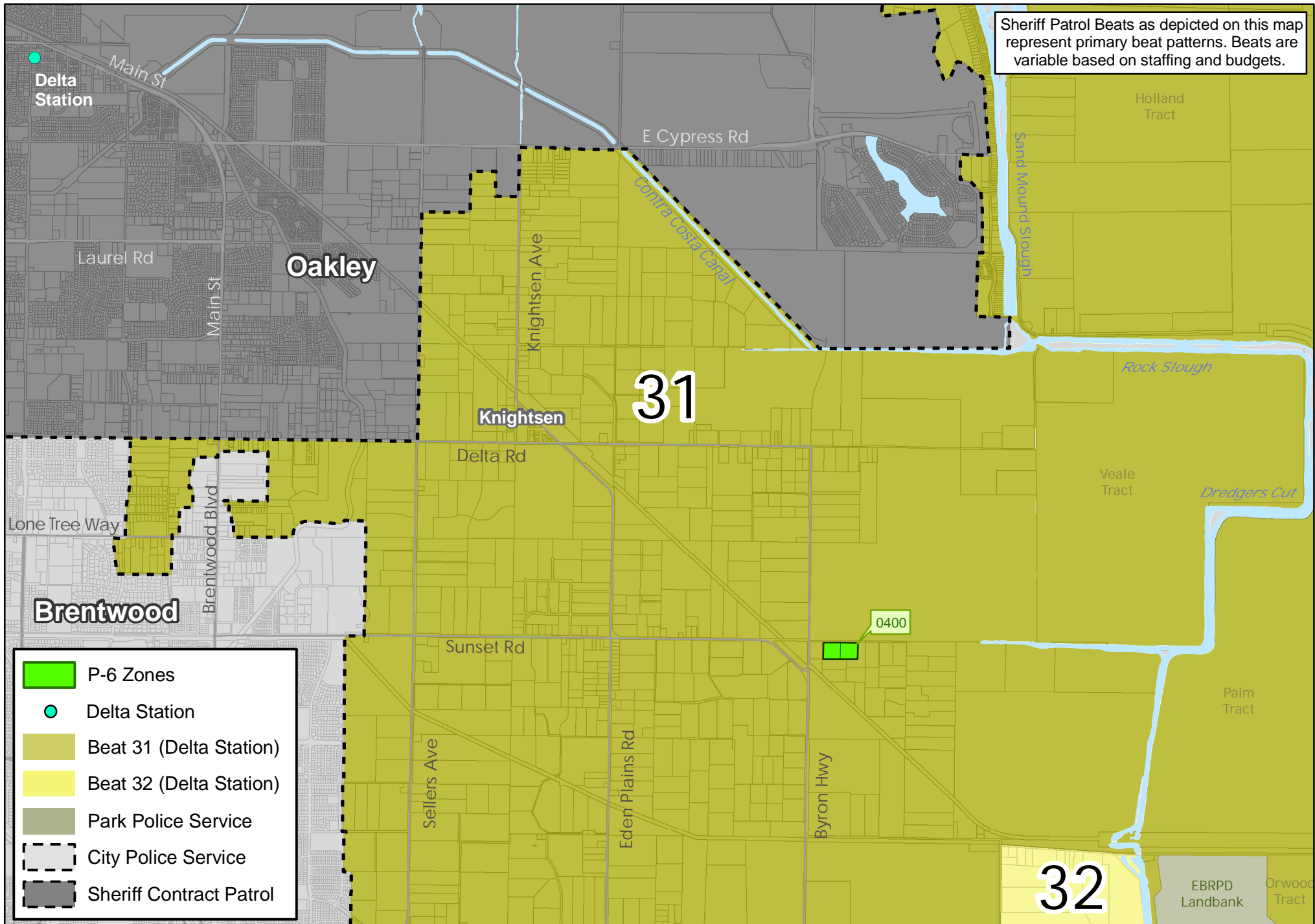


Fig 16: Sheriff Beats and P-6 Zone 0301 in Bethel Island Area as of July 2014

