

# 13-Unit Apartment Complex

3010 Del Hombre Lane

Walnut Creek

RZ12-3221 & DP12-3017



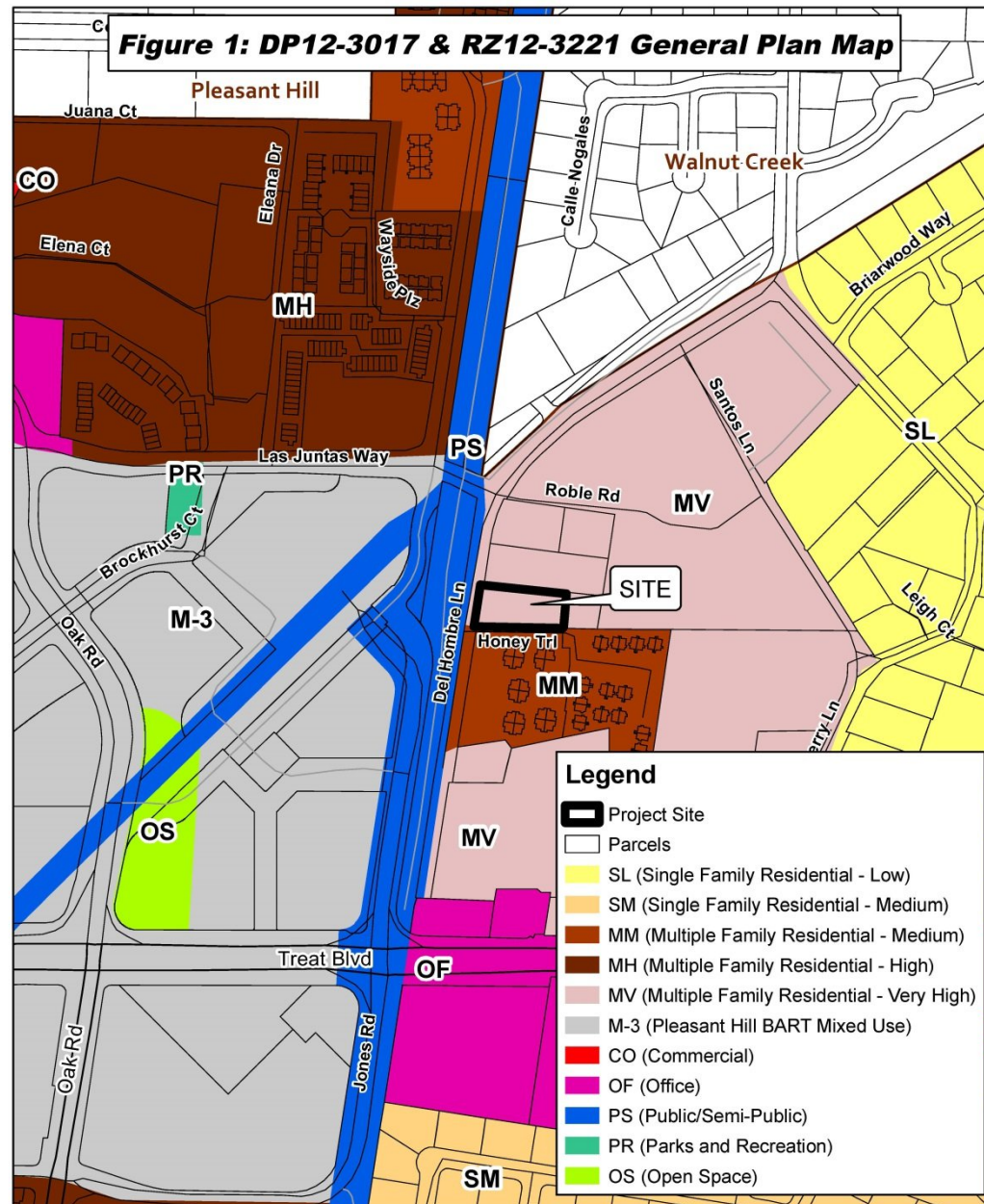
0 65 130 260 Feet

Map Created 7/30/2014  
by Contra Costa County Department of  
Conservation and Development, GIS Group  
30 Walnut Road, Martinez, CA 94553  
37.59 41.791N 122.0703756W

This map was created by the Contra Costa County Department of Conservation and Development with data from the Contra Costa County GIS Program. Some base data, primarily City Limits, is derived from the CA State Board of Equalization's tax rate areas. While obligated to use this data the County assumes no responsibility for its accuracy. This map contains copyrighted information and may not be altered. It may be reproduced in its current state if the source is cited. Users of this map agree to read and accept the County of Contra Costa disclaimer of liability for geographic information.





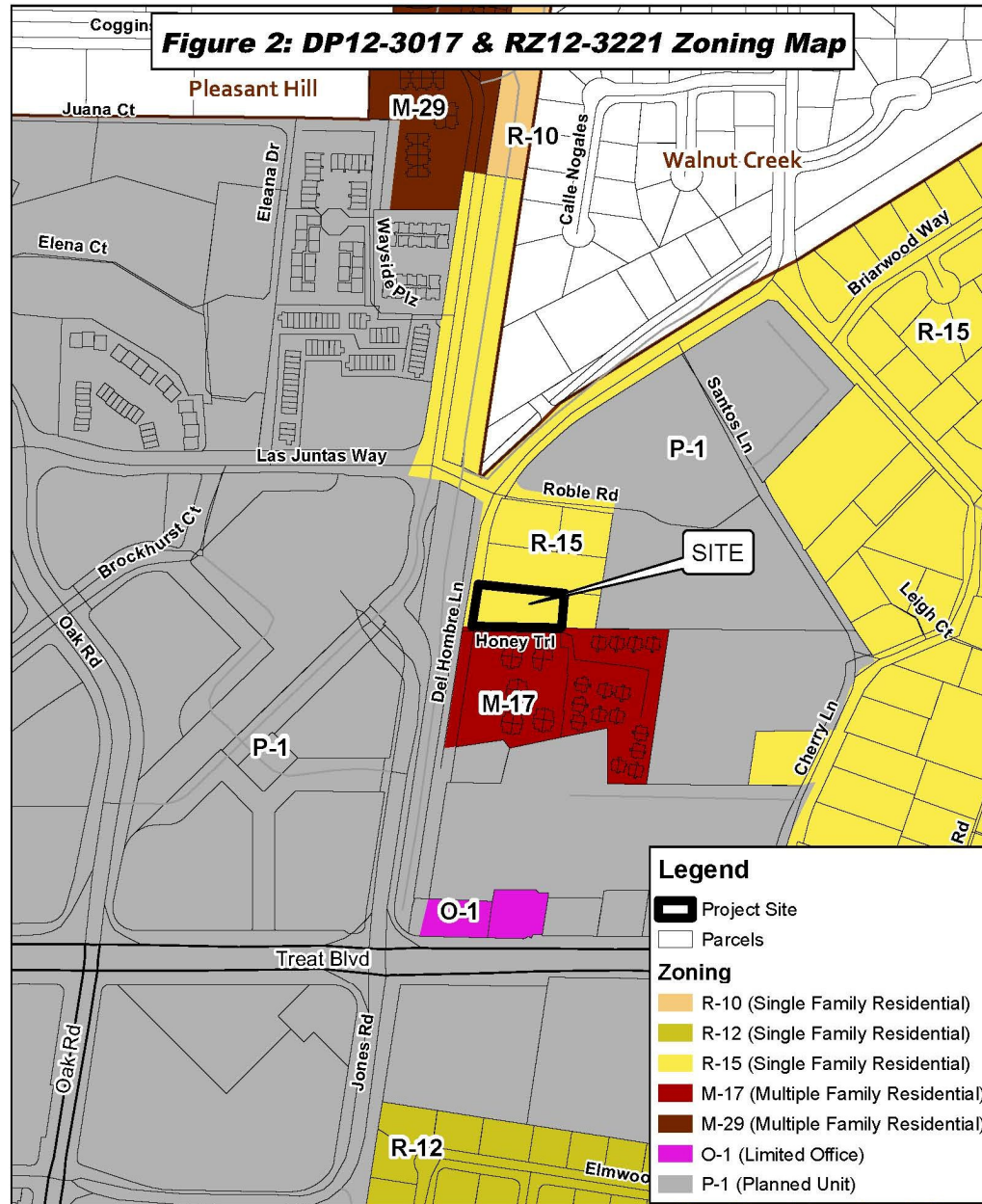


0 160 320 640 Feet

Map Created 10/07/2014  
by Contra Costa County Department of  
Conservation and Development, GIS Group  
30 Muir Road, Martinez, CA 94553  
37.59 41.791N 122.07 03.756W

This map was created by the Contra Costa County Department of Conservation and Development with data from the Contra Costa County GIS Program. Some base data, primarily City Limits, is derived from the CA State Board of Equalization's tax rate areas. While obligated to use this data the County assumes no responsibility for its accuracy. This map contains copyrighted information and may not be altered. It may be reproduced in its current state if the source is cited. Users of this map agree to read and accept the County of Contra Costa disclaimer of liability for geographic information.





0 155 310 620 Feet

Map Created 7/30/2014  
by Contra Costa County Department of  
Conservation and Development, GIS Group  
30 Mar Road, Martinez, CA 94553  
37.59.41.79N 122.07.00.766W

This map was created by the Contra Costa County Department of Conservation and Development with data from the Contra Costa County GIS Program. Some base data, primarily City Limits, is derived from the CA State Board of Equalization's tax rate areas. While obligated to use this data the County assumes no responsibility for its accuracy. This map contains copyrighted information and may not be altered. It may be reproduced in its current state if the source is cited. Users of this map agree to read and accept the County of Contra Costa disclaimer of liability for geographic information.

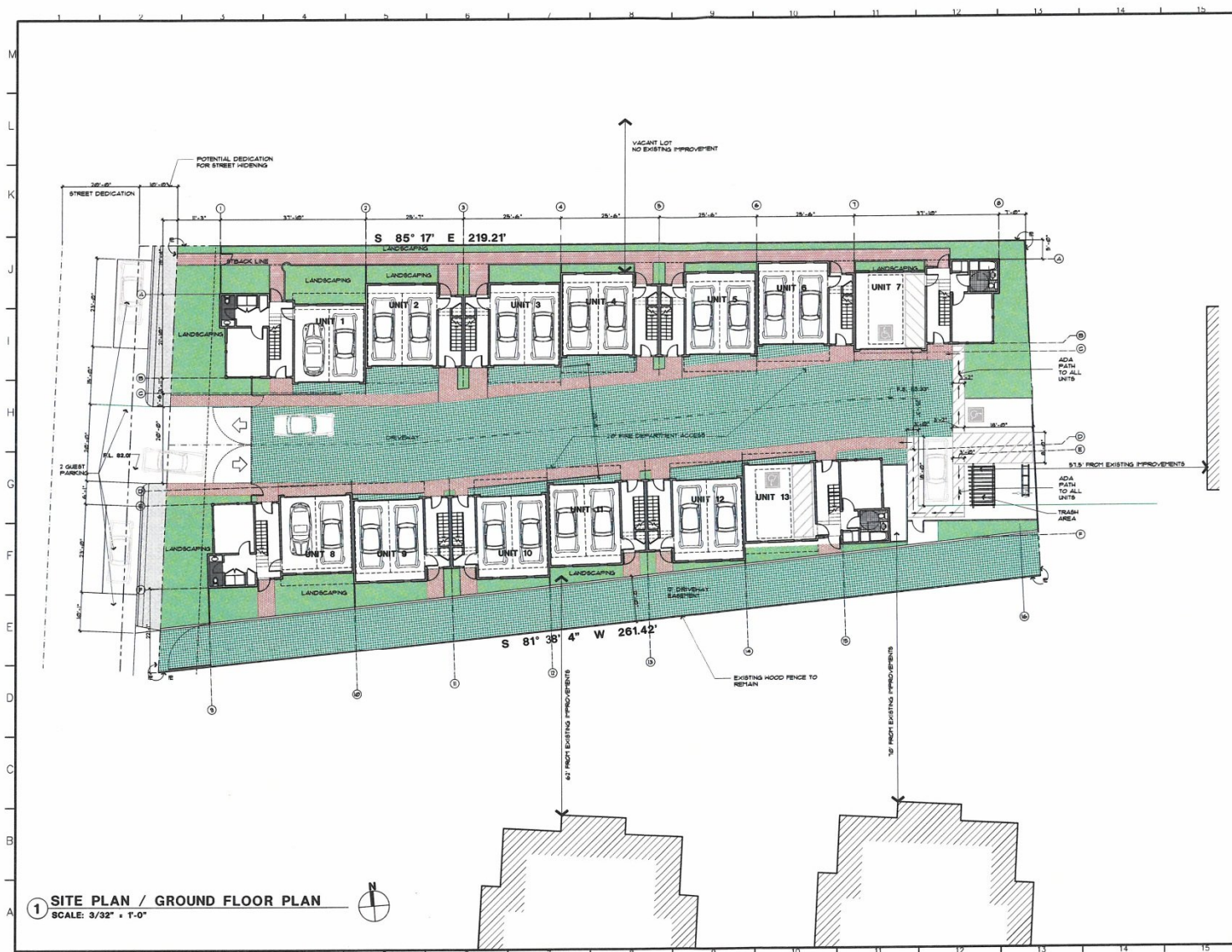




# Existing Residence

- Front of residence as viewed from Del Hombre
- Side of residence as viewed from Honey Trail





**Herand der Sarkissian**  
architects aia

8801 Sunset Boulevard, Suite 10  
Beverly Hills, California 90210  
Telephone 310 850 5050  
Fax 310 850 5050

e-mail: hdsarchitects@compusa.net

DATE	REVISION

Notes

The design shown and described herein including all technical drawings, specifications, and related documents are prepared and issued by the architect and are subject to the provisions, terms and conditions set forth in the contract documents. No part of this drawing shall be used for any other project without the written consent of the architect.

Copyright © Herand der Sarkissian  
All rights reserved.  
330 E. Broadway, Unit 8  
Beverly Hills, CA 90210 (310) 850-0415

**PRELIMINARY & FINAL  
DEVELOPMENT PLAN  
13 UNIT APARTMENT  
COMPLEX**

for  
HAIDOUH H. KOHLER  
340 TERMINO AVE.  
LONG BEACH, CA 90804

PROJECT ADDRESS:  
3010 DEL HOMBRE LN.  
WALNUT CREEK, CA 94607

**SITE PLAN/  
GROUND FLOOR PLAN**

Project No.	1101	Seal
Date	AS SHOWN	
Date	11.13.2014	
Designed		
Drawn		
Checked		Working No.
Reviewed		<b>A-1</b>
Hds		Sheet





# Herand der Sarkissian

architects a.s.a.  
 8205 Sunset Boulevard, Unit D  
 Chatsworth, California 91317  
 Telephone 818 833 6188  
 Fax 818 833 5863  
 e-mail: hdsarchitects@compuserve.net

Revisions	Date

Notice  
 The designs shown and described herein including all technical drawings, graphics, and models herein, are preliminary and cannot be used for construction or similar purposes without the written consent of Herand der Sarkissian. These are intended for limited review and circulation by clients, consultants, contractors, government agencies, lenders and other parties only to coordinate with the design.

Copyright Herand der Sarkissian  
 All rights reserved  
 8205 S. Sunset Blvd. D  
 Chatsworth, CA 91317 (818) 833-6188

**PRELIMINARY & FINAL  
 DEVELOPMENT PLAN**  
**13 UNIT APARTMENT  
 COMPLEX**  
 for  
**HAIGDOUSH H. KOHLER**  
 349 TERMINO AVE.,  
 LONG BEACH, CA 90814  
 PROJECT ADDRESS:  
 3010 DEL HOMBRE LN.,  
 WALNUT CREEK, CA 94607

Drawing Title  
**BUILDING ELEVATIONS**

Project No	1101
Scale	AS SHOWN
Date	11.15.2014
Designed	
Drawn	
Checked	
Reviewed	
Drawing No	<b>A-4.1</b>
Hds	Sheet

