



Planning Integration Team for Community Health (PITCH)

**Progress Report to the
Contra Costa County Board of Supervisors**

February 28, 2012

PITCH Background

- Planning Integration Team for Community Health = PITCH; established by the Board of Supervisors in 2007
- Integrates health into land use and transportation planning and engineering activities
- Interdepartmental team includes Departments of Conservation and Development (DCD), Public Works (CCPW), and Health Services (CCHS)

How PITCH works together

- Regular monthly meetings
- Basic staffing provided by Health Services
- Annual work plan and implementation activities
- Joint grant applications

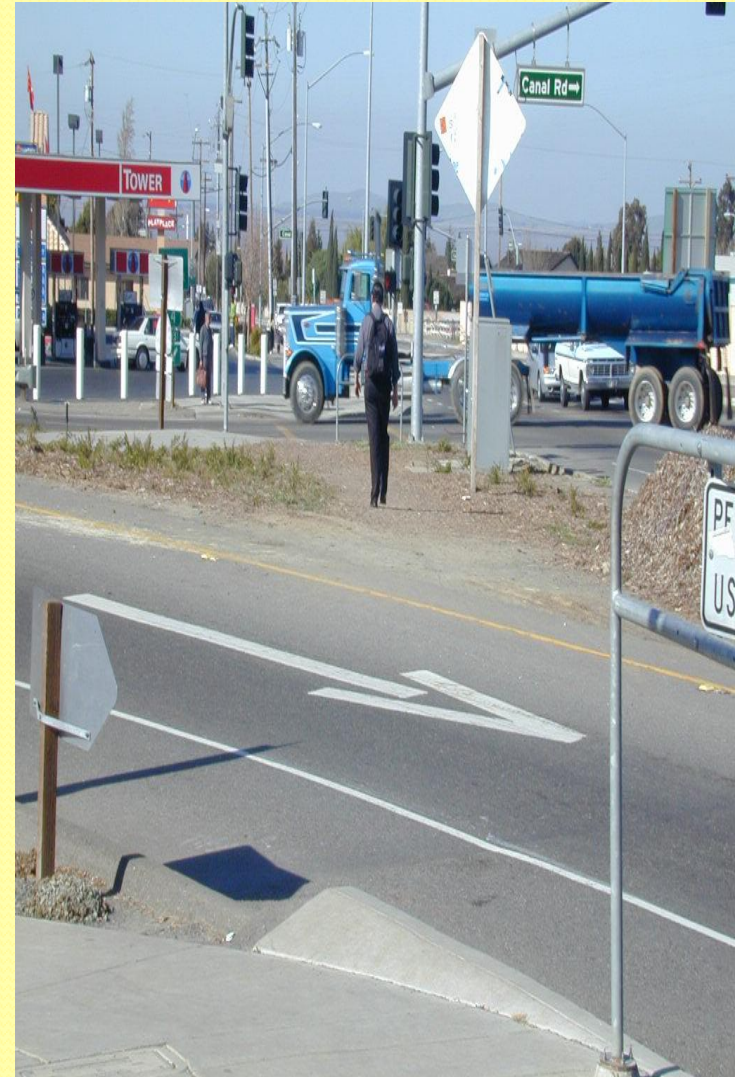
Complete Streets

- Complete Streets amendment to General Plan – Spring 2008, early adopter
- Leadership provided by DCD. CCHS and CCPW participated
- Complete Streets meet CCC transportation system and climate change goals

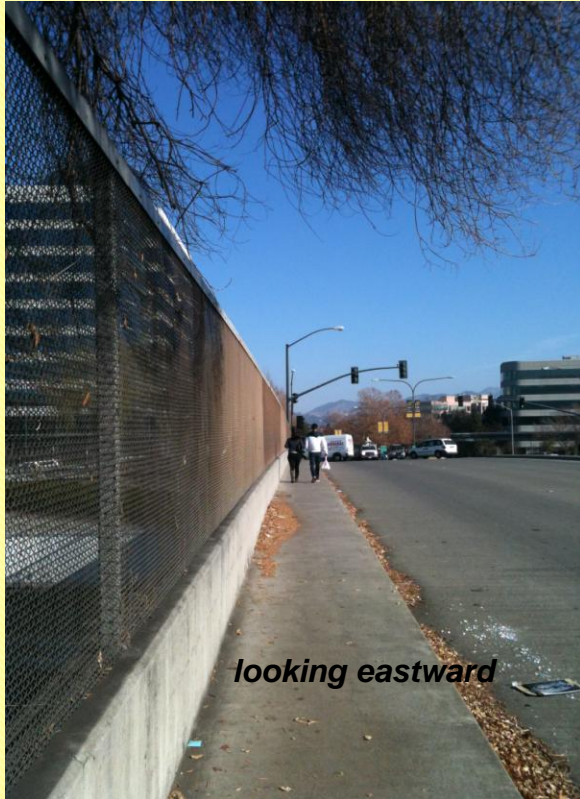


Bailey Rd/Hwy 4, Bay Point

- Bailey Rd Ped and Bike Plan established design to implement BART Station Area Specific Plan, completed 2010
- Includes design standards for Hwy 4 on/off ramps, sidewalks, Delta DeAnza Trail, landscaping and lighting.
- Work is underway to develop and fund projects necessary to implement plan provisions



Treat Blvd, Walnut Creek (freeway overcrossing near Pleasant Hill/Contra Costa Centre BART Station)

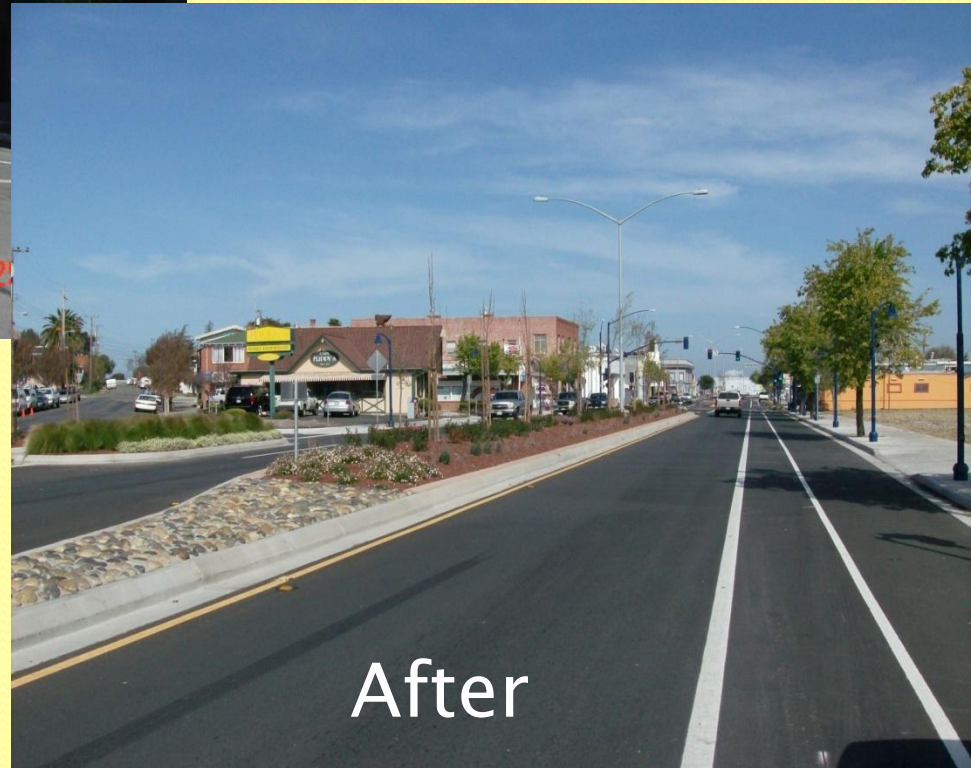
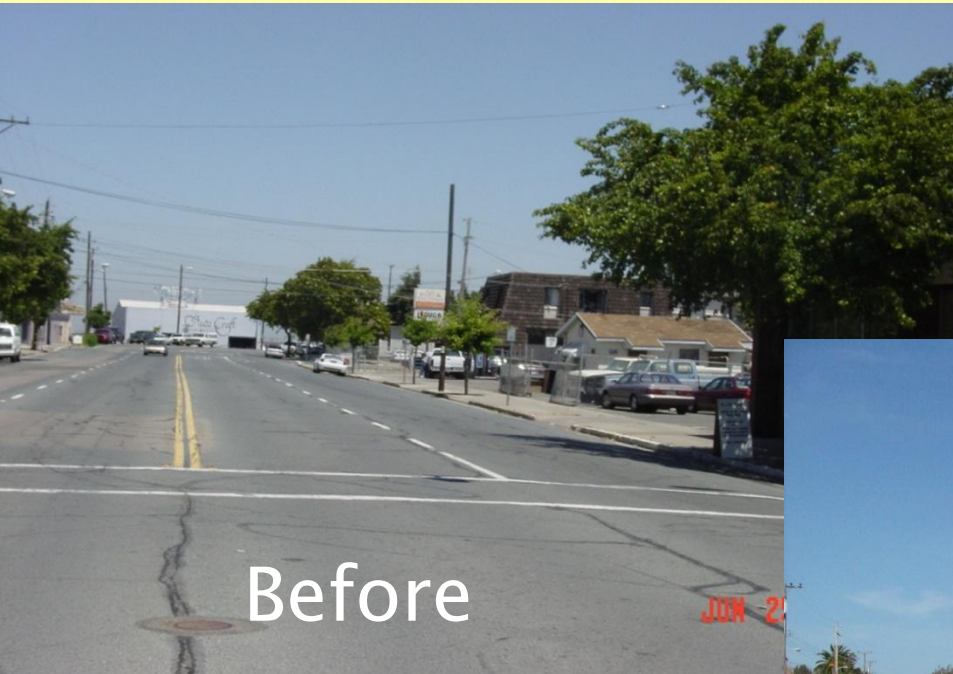


Narrow sidewalk on overpass linking BART Station area to North Main Street



Work with Walnut Creek to design and construct widened sidewalk on overpass toward BART station area

Challenge: Funding to maintain landscaping



Parker Avenue, Rodeo

Challenge: Multiple Roadway Needs

- Meeting multiple roadway needs in limited space limits options

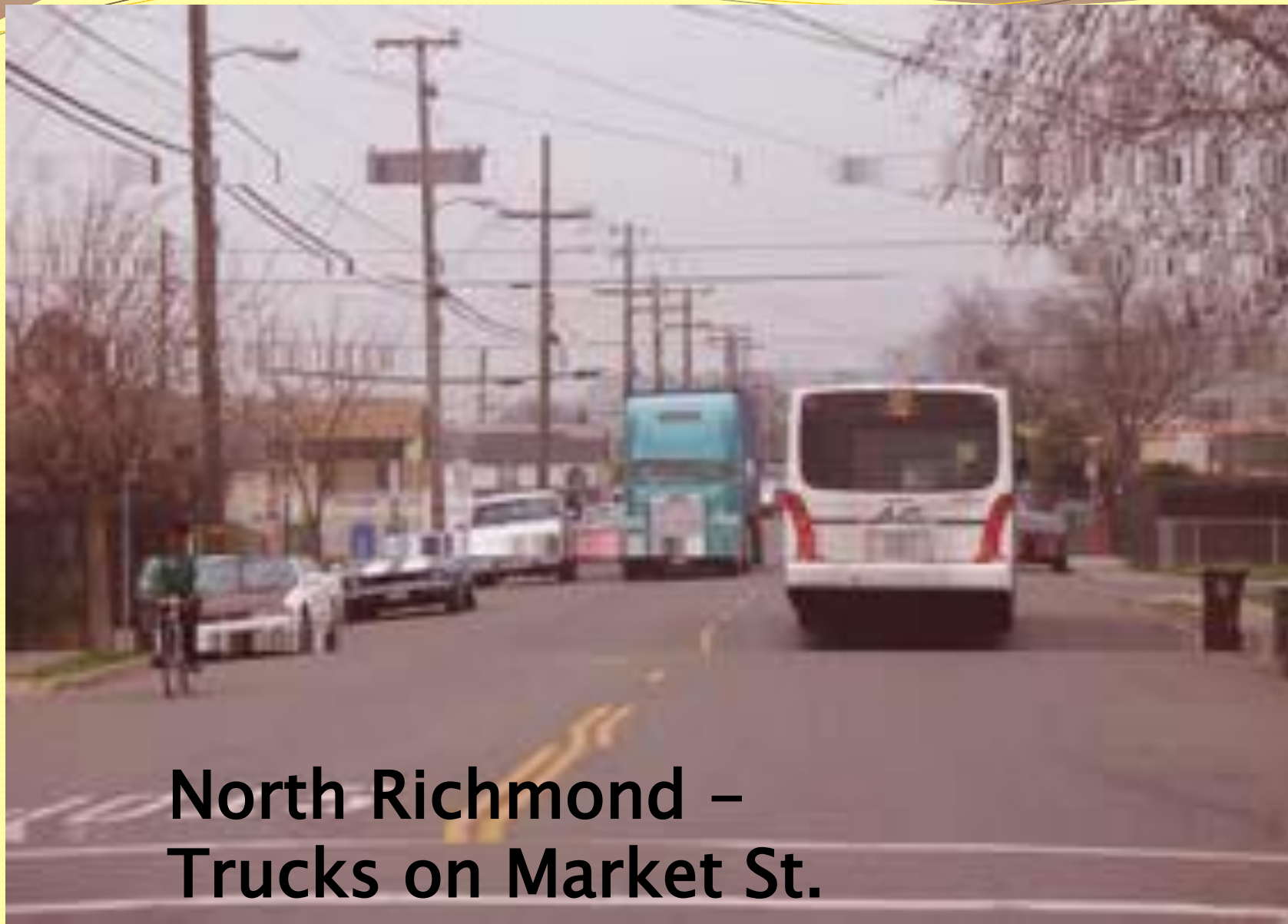


North Richmond Truck Route Plan

- Goal: Reduce diesel truck traffic and air pollution near residences
- Study: Completed in April 2007, community identified a preferred truck route parallel to railroad tracks
- Partnership: DCD, CCHS, CCPW, RDA, and community
- Alignment Plan: Due to right-of-way constraints, re-evaluate community's preferred route and consider an alternative route
- Challenge: How to complete? CCPW was preparing truck route alignment plan, but work has been suspended due to RDA dissolution

[illegible]

North Richmond Truck Route



**North Richmond –
Trucks on Market St.**

Road Standards/Fire Code Modifications

- Fire Code can conflict with other County policies and constrain our ability to adopt context-sensitive road design standards
- This is a nationwide issue; federal agencies and regulatory bodies encourage jurisdictions to work through at local level
- BOS directed staff and fire officials to find common ground
- Pre-planning for local effort now completed. County staff, Fire Marshal, City/County Engineering Advisory Committee and other Cities were involved
- Ready to develop standards with consultant support from City of Concord
- Will result in modifications to road standards/fire codes and structure for ongoing communication by Summer 2012

Fire district standards can conflict with street width design

Before



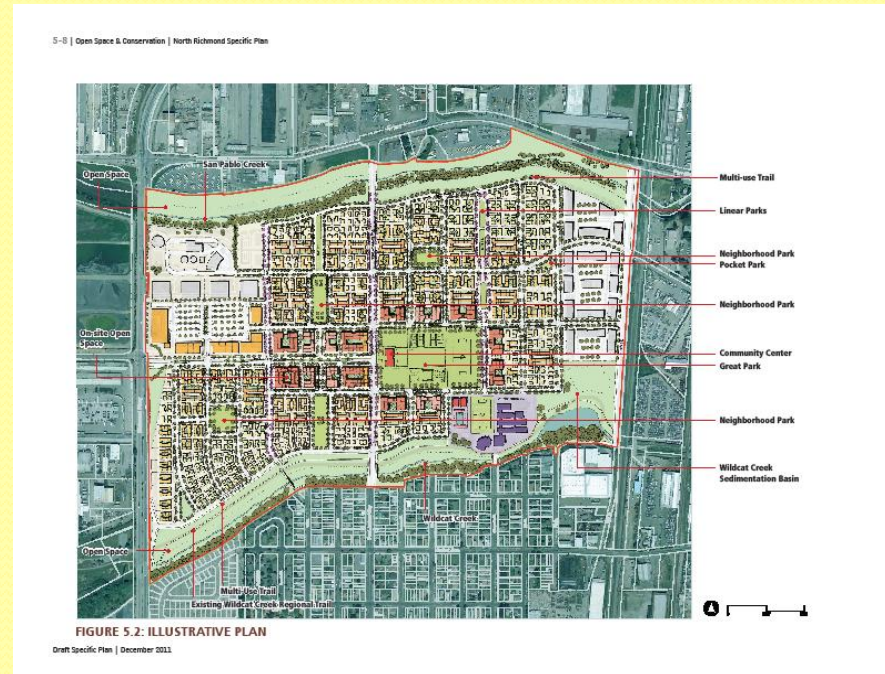
**Fred Jackson Way,
North Richmond**

After



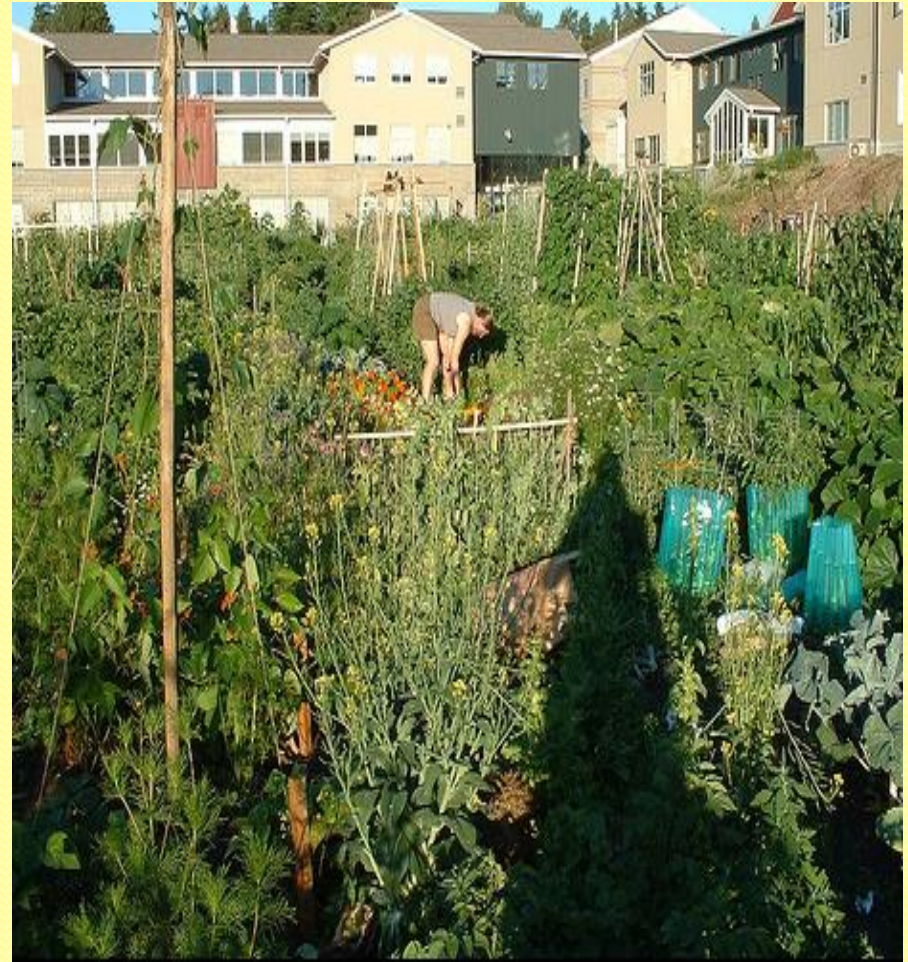
North Richmond Specific Plan

- Proposal to transform 200 acres of mostly vacant industrial land between San Pablo and Wildcat creeks into a new residential neighborhood
- Draft Specific Plan and EIR were in progress, but work suspended due to RDA dissolution
- Provided space for recreation, open space, commercial, and urban agriculture/community garden activities



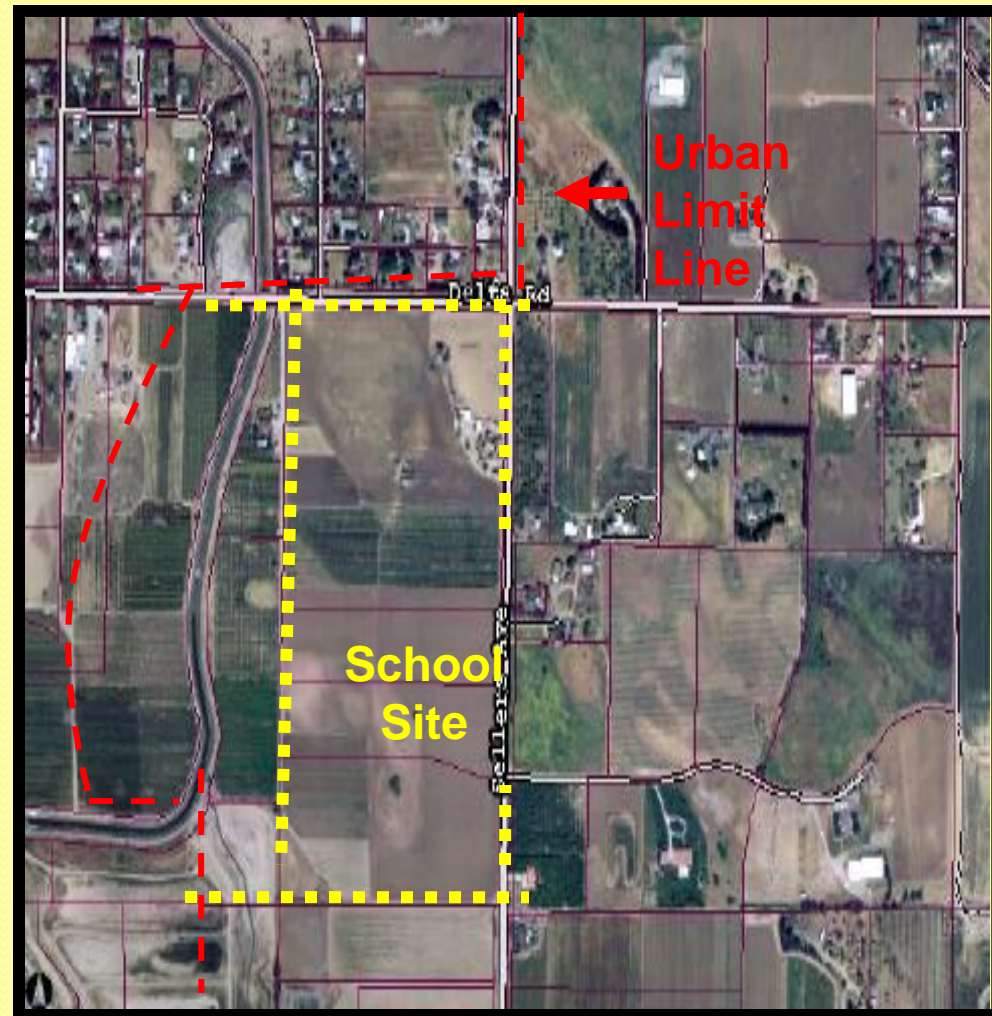
North Richmond Specific Plan

- Included health-promoting elements: bike lanes, walk-promoting grid design, urban agriculture, parks, healthy retailing
- CCHS fostered community input and commented on administrative draft
- Challenge: Adjusting to a post-RDA environment



Improve school Siting and Design

- Monitoring local school siting and design issues
- Commented to CA Board of Education during their re-visioning process
- Challenge: Current state school siting and design regulations significantly limit role of Cities and County



**Liberty Union High School District
4th High School - Brentwood**

PITCH goes beyond the County

- ▶ CCHS funded by The California Endowment to build its capacity to collaborate on land use and transportation
- ▶ Projects with PITCH, the Health Element of the Richmond General Plan, and the Concord Naval Weapons Station Re-Use Plan
- ▶ A model for other health-related land use and transportation projects in California
- ▶ State Health Department interested in a case study on the Fire Code / Road Standards work

Goals for 2012

- Complete Street Standards/Fire Codes work
- Provide input on the County's Climate Change Action Plan
- Advocate for School Siting and Design policy reform
- Advocate for more flexibility in establishment of school zone; e.g double fine zone and size of zone
- Establish a maintenance mechanism to fund streetscape improvements on Parker Ave., Bailey Rd., and San Pablo Dam Rd.