

**STAFF STUDY OF COMMISSION DECISION**

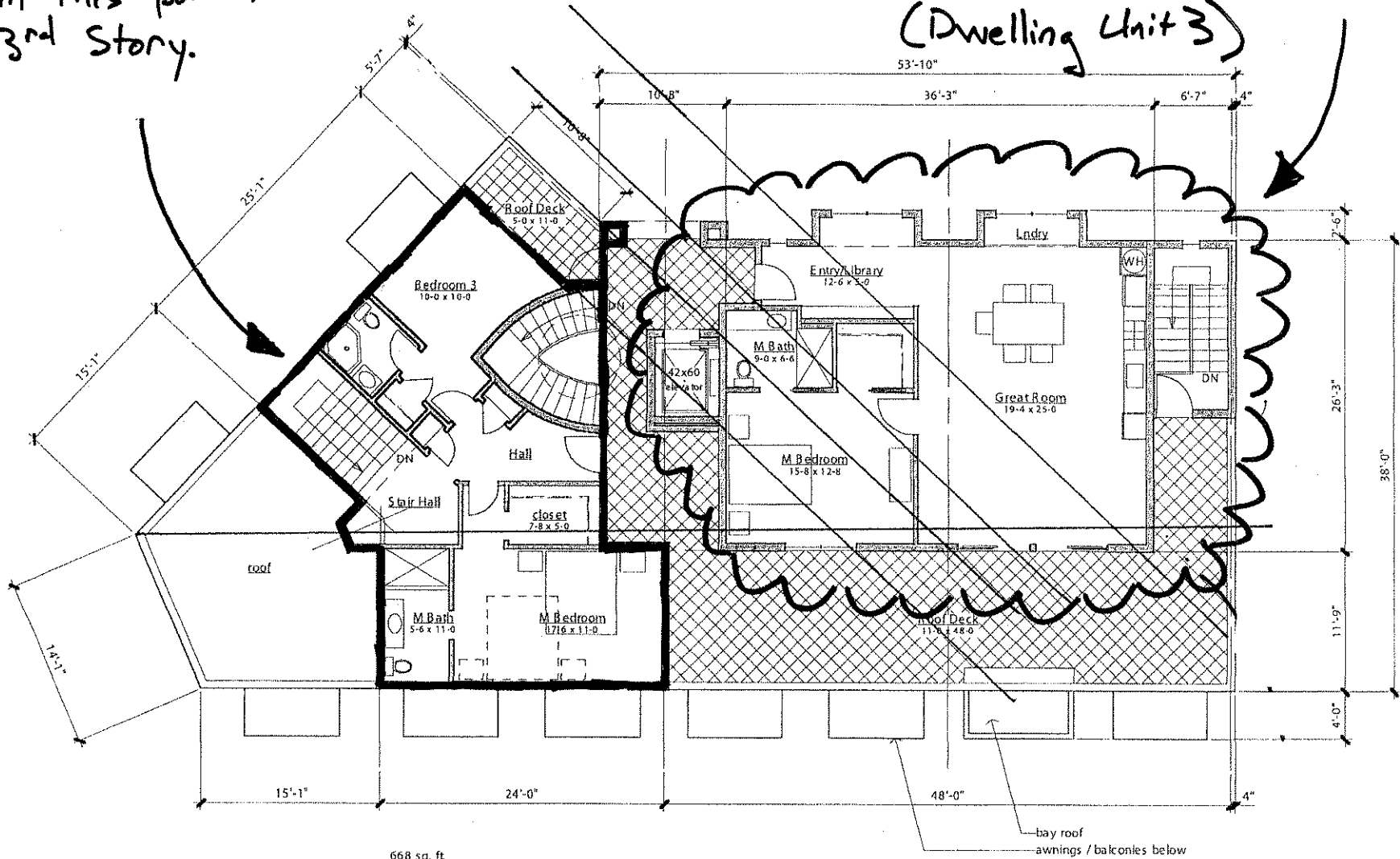
Commission Decision

401 Colusa Ave  
Third Level Floor Plan

Staff Study  
October 2008

Retain this portion  
of 3rd story.

Eliminate this portion of 3<sup>rd</sup> story.  
(Dwelling Unit 3)



668 sq. ft  
this level

DWELLING 2  
total  
1812 sq. ft.

DWELLING 3  
total  
914 sq. ft.

Eliminate this portion  
of 3rd story

401 Colusa Ave  
Oakview Ave Elevation (North)

Retain this portion of  
3rd story.

profile of approved  
building under P-1  
Development Plan  
3056-B2

building beyond  
entry court shown  
toned. see drawing  
4/A3.1 for elevation  
residential entry court  
site walls, same material  
as building base

TOP OF CLERESTORY +40'-0"

TOP OF PARAPET +37'-4"

TOP OF PARAPET +29'-10"

wood siding, typ.

painted aluminum windows

stucco, typ.

awning, typ.

storefront w/ tiled base, typ.

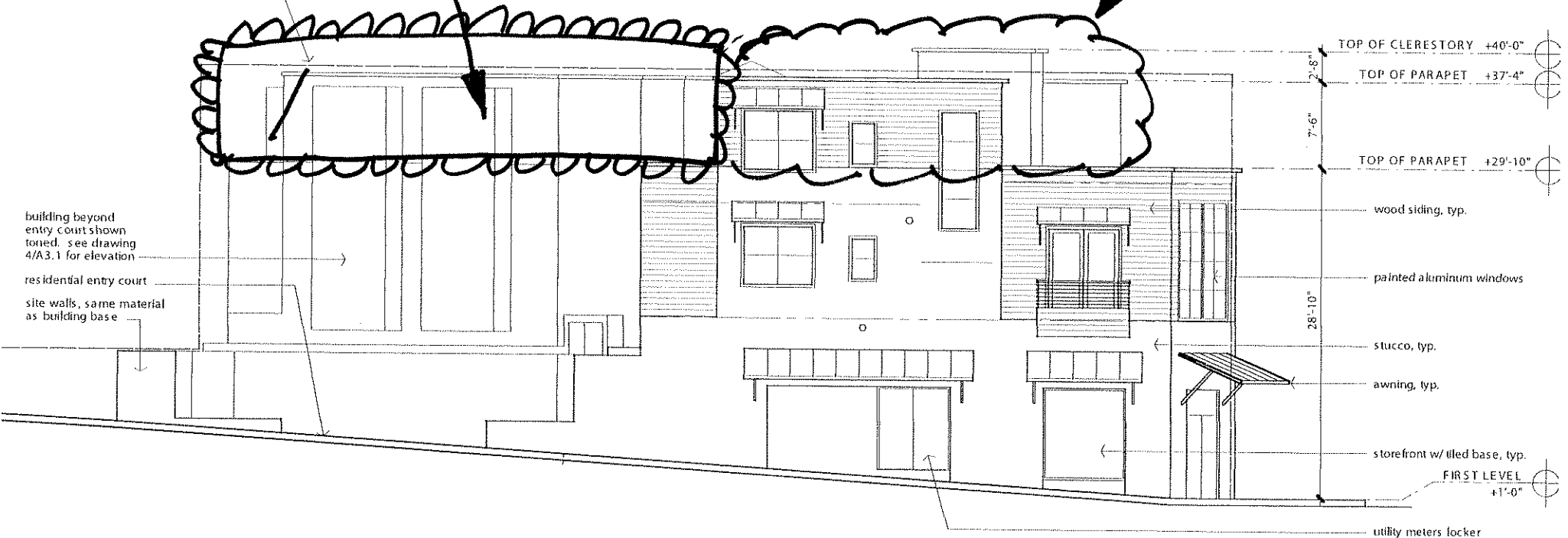
FIRST LEVEL  
+1'-0"

utility meters locker

28'-10"

7'-6"

2'-8"



Commission Decision

Staff Study  
October 2008

401 Colusa Ave  
Colusa Ave Elevation (South)

Retain this portion of  
3rd story.

Eliminate this portion of  
3rd story.

street-wall profile of  
approved building under  
P-1 Development Plan  
3056-82

2  
A3.2

building set back beyond  
roof deck shown toned  
roof deck behind parapet

fire-rated wall, on property  
line

neighboring  
commercial property  
also in Development  
Plan 3056-82, under  
separate ownership

2  
A3.2

