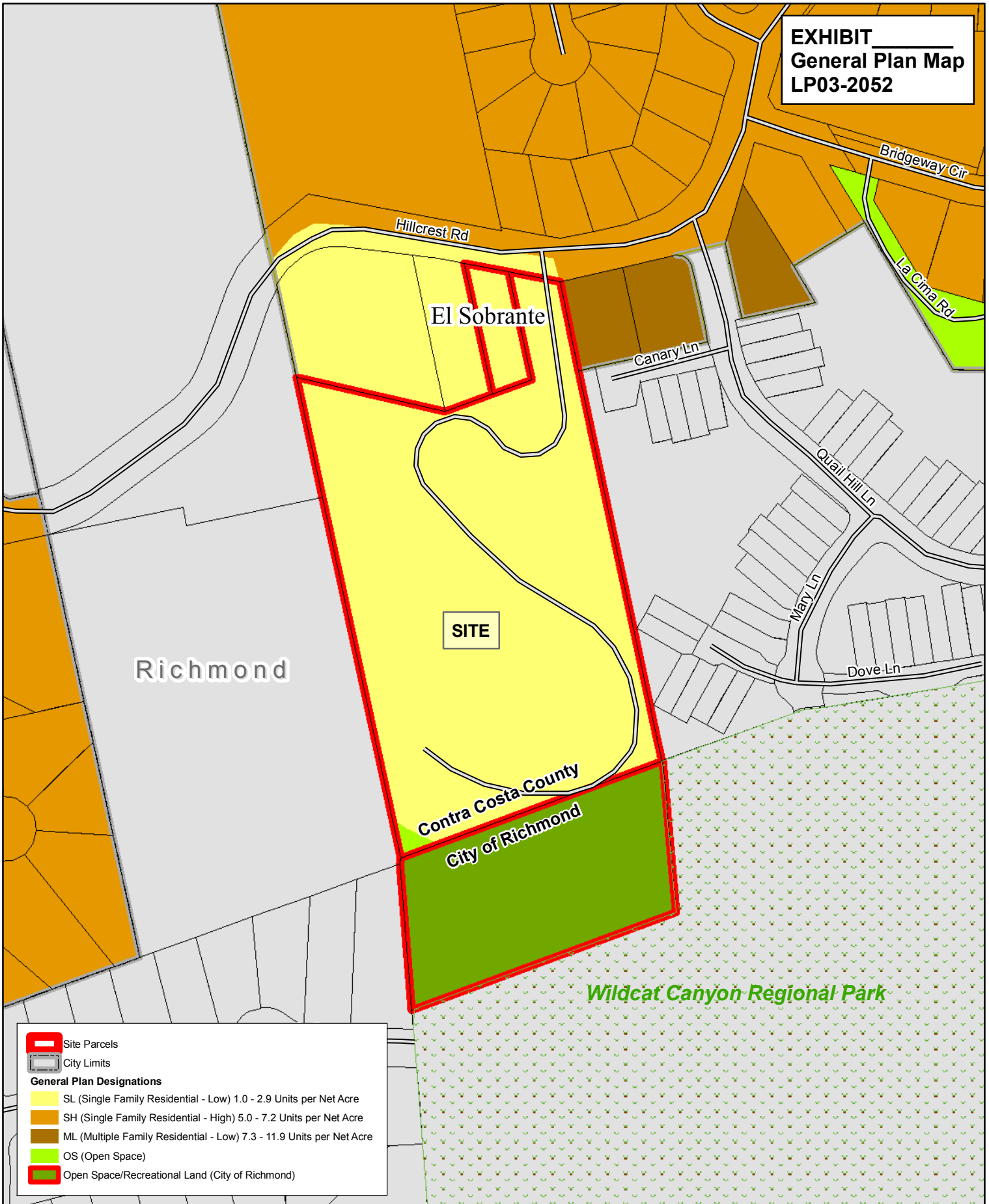


EXHIBIT
General Plan Map
LP03-2052



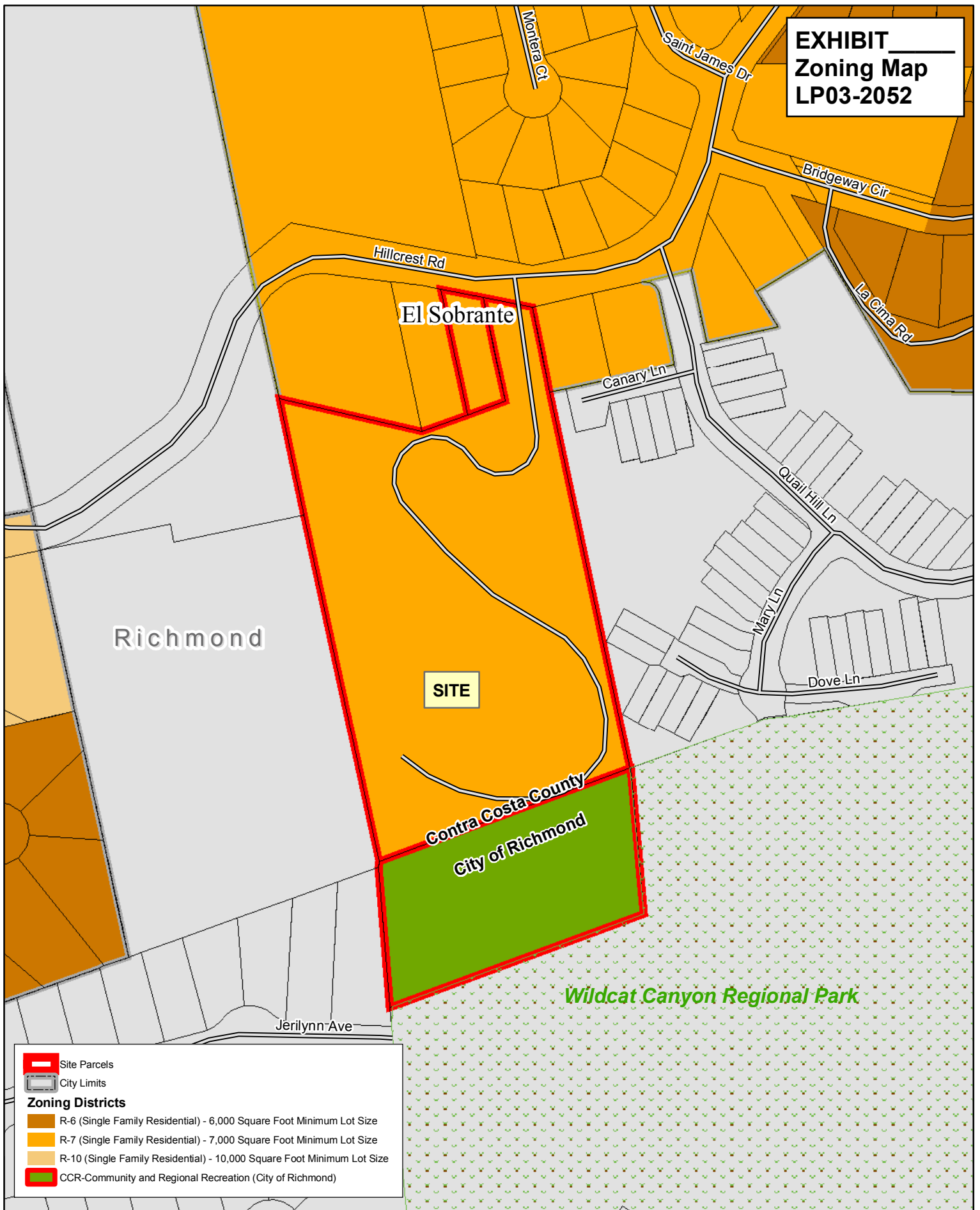
This map or dataset was created by the Contra Costa County Conservation and Development Department with data from the Contra Costa County GIS Program. Some base data, primarily City Limits, is derived from the CA State Board of Equalization's tax rate areas. While obligated to use this data the County assumes no responsibility for its accuracy. This map contains copyrighted information and may not be altered. It may be reproduced in its current state if the source is cited. Users of this map agree to read and accept the County of Contra Costa disclaimer of liability for geographic information.



0 50 100 200 Feet

Map created 9/2/2008
 by Contra Costa County Conservation and Development Department,
 Community Development Division-GIS Group
 651 Pine Street, 4th Floor North Wing, Martinez, CA 94553-0095
 37.55-48.455N 122.36-35.384W

EXHIBIT
Zoning Map
LP03-2052



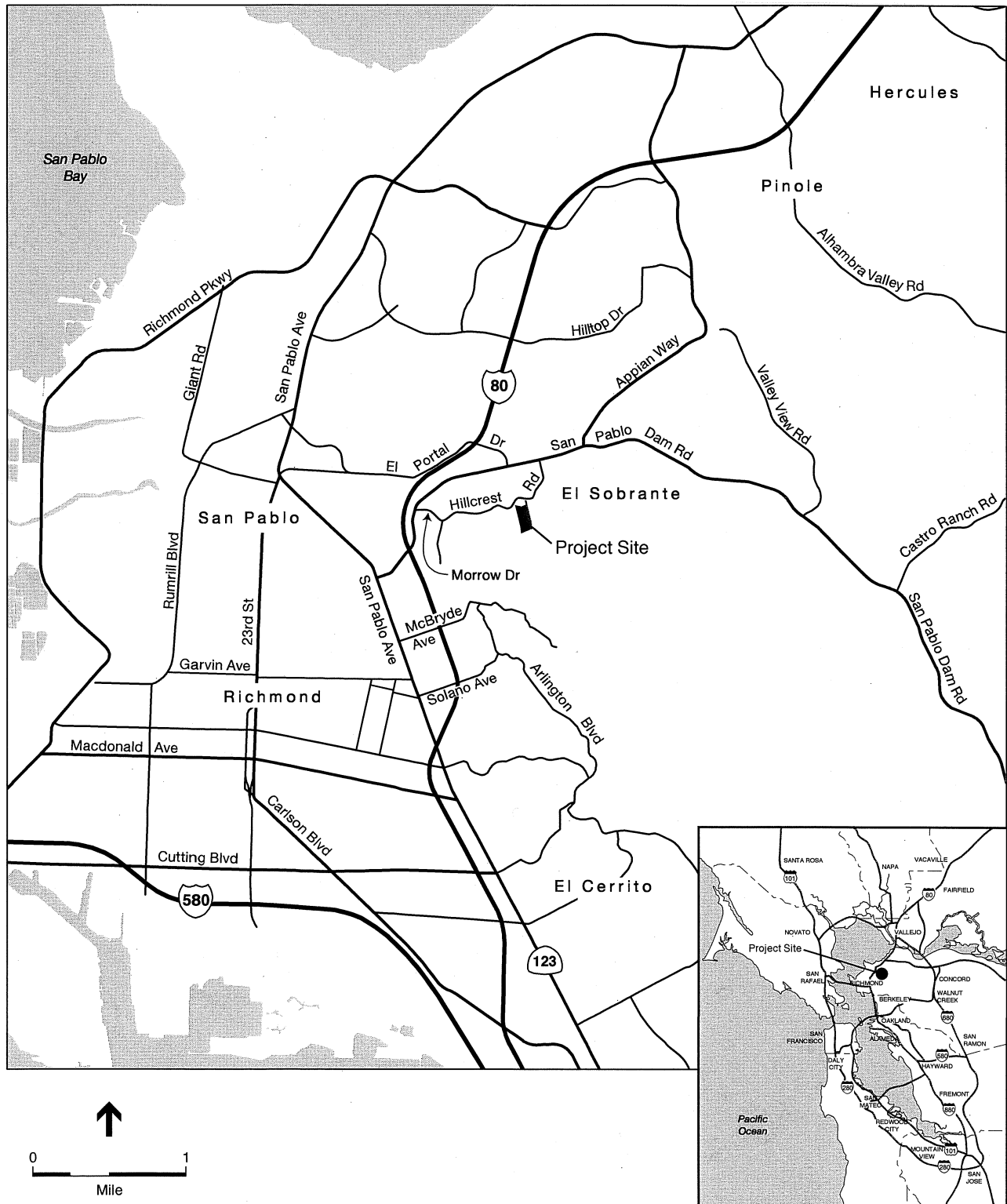
This map or dataset was created by the Contra Costa County Conservation and Development Department with data from the Contra Costa County GIS Program. Some base data, primarily City Limits, is derived from the CA State Board of Equalization's tax rate areas. While obligated to use this data the County assumes no responsibility for its accuracy. This map contains copyrighted information and may not be altered. It may be reproduced in its current state if the source is cited. Users of this map agree to read and accept the County of Contra Costa disclaimer of liability for geographic information.



0 50 100 200 Feet

Map created 9/2/2008
by Contra Costa County Conservation and Development Department,
Community Development Division-GIS Group
651 Pine Street, 4th Floor North Wing, Martinez, CA 94553-0095
37.59:48.462N 122.08:35.364W

EXHIBIT 3 VICINITY MAP

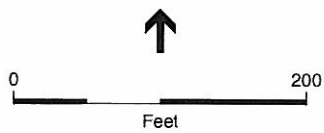


County File No. LP03-2052

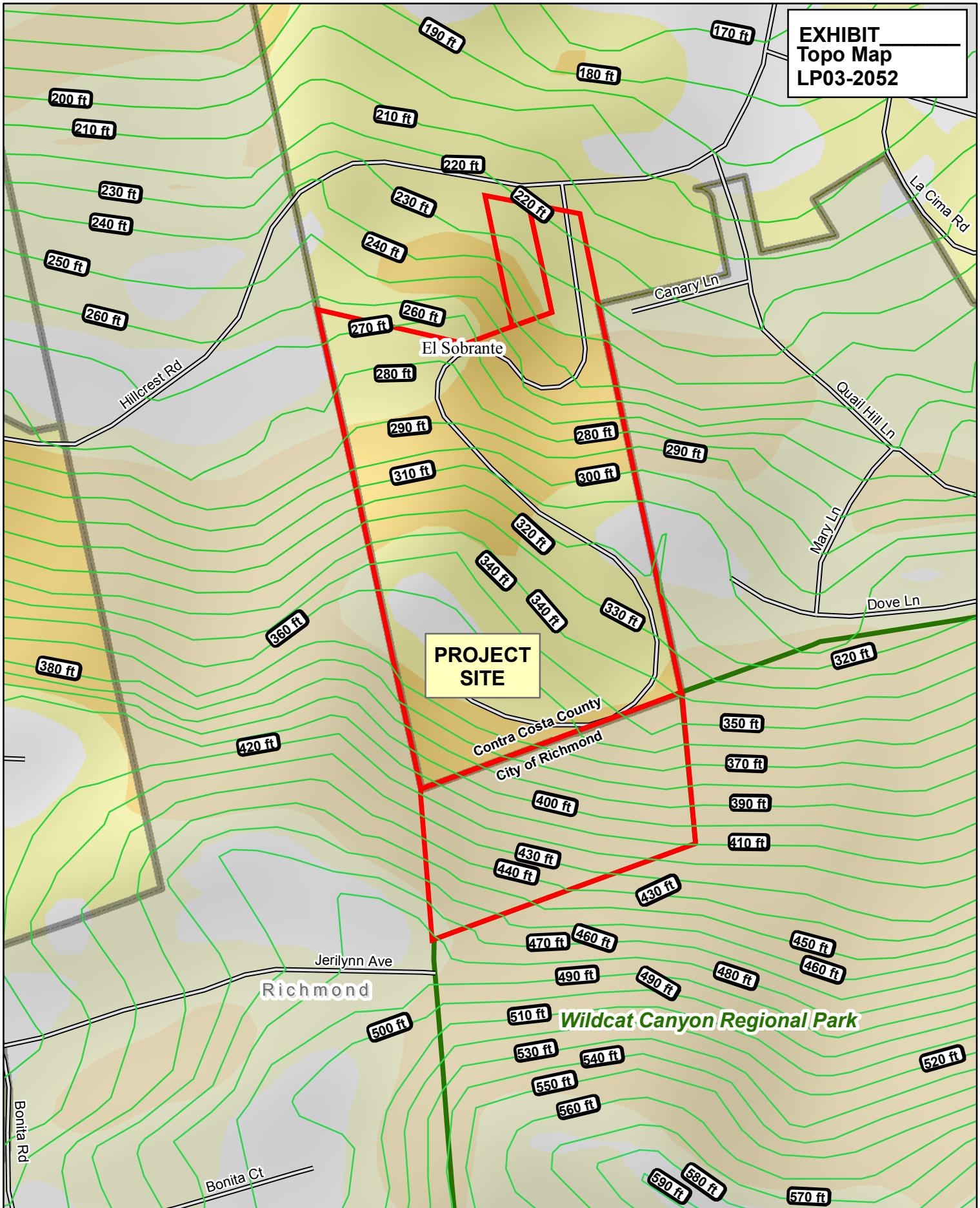
Sikh Center Expansion . 207268

Project Location

EXHIBIT _____
AERIAL VIEW OF
PROJECT SITE & ENVIRONS



**EXHIBIT
Topo Map
LP03-2052**

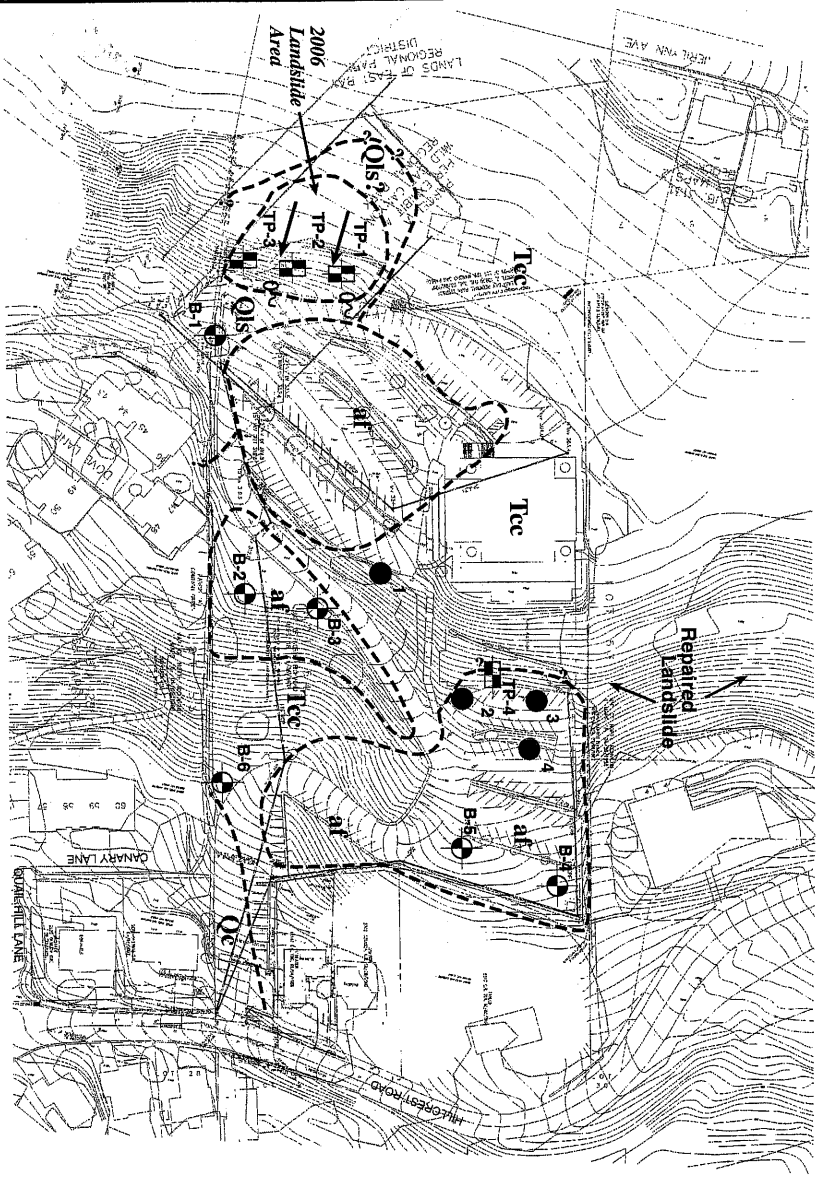


This map or dataset was created by the Contra Costa County Conservation and Development Department with data from the Contra Costa County GIS Program. Some base data, primarily City Limits, is derived from the CA State Board of Equalization's tax rate areas. While obligated to use this data the County assumes no responsibility for its accuracy. This map contains copyrighted information and may not be altered. It may be reproduced in its current state if the source is cited. Users of this map agree to read and accept the County of Contra Costa disclaimer of liability for geographic information.



0 50 100 200 Feet

Map created 9/2/2008
by Contra Costa County Conservation and Development Department,
Community Development Division-GIS Group
651 Pine Street, 4th Floor North Wing, Martinez, CA 94553-0095
37 59 48.455N 122 06 35.384W



EXPLANATION

Soil and Rock Units:

af Artificial Fill

Qc Colluvium, chiefly silty to sandy clay

Qls Landslide Deposits, chiefly silty to sandy clay, queried where uncertain

Tcc Contra Costa Group, chiefly claystone and siltstone with minor interbedded sandstone and conglomerate

Map Symbols:

Geologic Contact, approximate, queried where uncertain

Landslide, boundaries are approximate

B-4 Test Boring Location (JA, 2007)

TP-2 Test Pit Location (JA, 2006)

B-4 Test Boring Location (BSK, 2000)

Seepage Area

JOYCE ASSOCIATES

**Geologic Map
Silk Center
El Sobrante, California**

Job Number: 184.02 Date: February 2007

**PLATE
1**

EXHIBIT
Aerial Map
LP03-2052



This map or dataset was created by the Contra Costa County Conservation and Development Department with data from the Contra Costa County Geographic Information System. The map is provided for informational purposes only. The County assumes no responsibility for its accuracy. This map contains copyrighted information and may not be altered. It may be reproduced in its current state if the source is cited. Users of this map agree to read and accept the County of Contra Costa disclaimer of liability for geographic information.



Map created 02/2/2028
by Contra Costa County Conservation and Development Department,
Community Development Division--GIS Group
651 Pine Street, 4th Floor North Wing, Martinez, CA 94553-0095
37°39'46.465N 122°06'35.384W



EXHIBIT — **PLATE** ~~EXHIBIT~~
**VIEW FROM ADJACENT
EAST BAY REGIONAL PARK
DISTRICT DOWN TO SIKH SITE**

